



Second Demolition Notice to Proceed

July 15, 2010

Transbay Transit Center

TJPA





Transbay Transit Center

Demolition Notices to Proceed

- NTP 1 – Pre-demolition work (January 4, 2010):
 - Obtain permits/approvals necessary to perform work
 - Develop and submit information necessary to perform work
- NTP 2 – Demolition work (August 7, 2010):
 - Site Preparation
 - Secure Ramps/Building
 - Mobilize Equipment
 - Demolition
 - Abatement of Hazardous Materials
 - Demolish Structures and Stockpile Materials
 - Muni OCS Work



Transbay Transit Center

Demolition Notice to Proceed

- Conditions for Second Notice to Proceed
 - Certification of Phase 1 Funding
 - Temporary Terminal ready for occupancy
 - Foundation package ready for advertisement
 - Buttress, Shoring and Excavation Contract to be advertised the last week of July



Transbay Transit Center

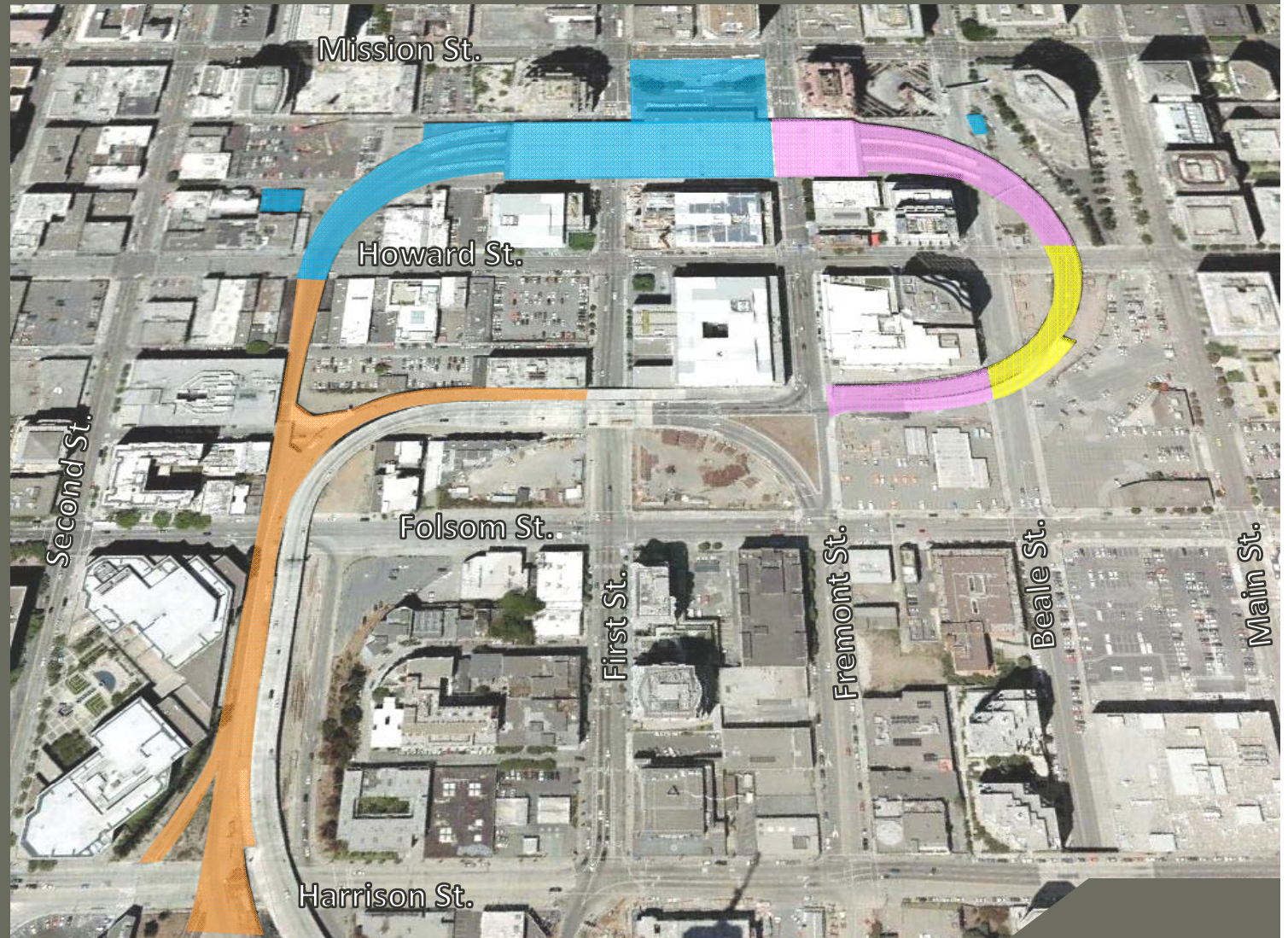
Demolition Phasing

Phase 1 (16 days):
Aug 14, 2010 – Aug 28, 2010

Phase 2 (64 days):
Aug 29, 2010 – Oct 31, 2010

Phase 3 (120 days):
Nov 1 2010 – Feb 28, 2010

Phase 4 (60 days):
Mar 1, 2011 – Apr 29, 2011

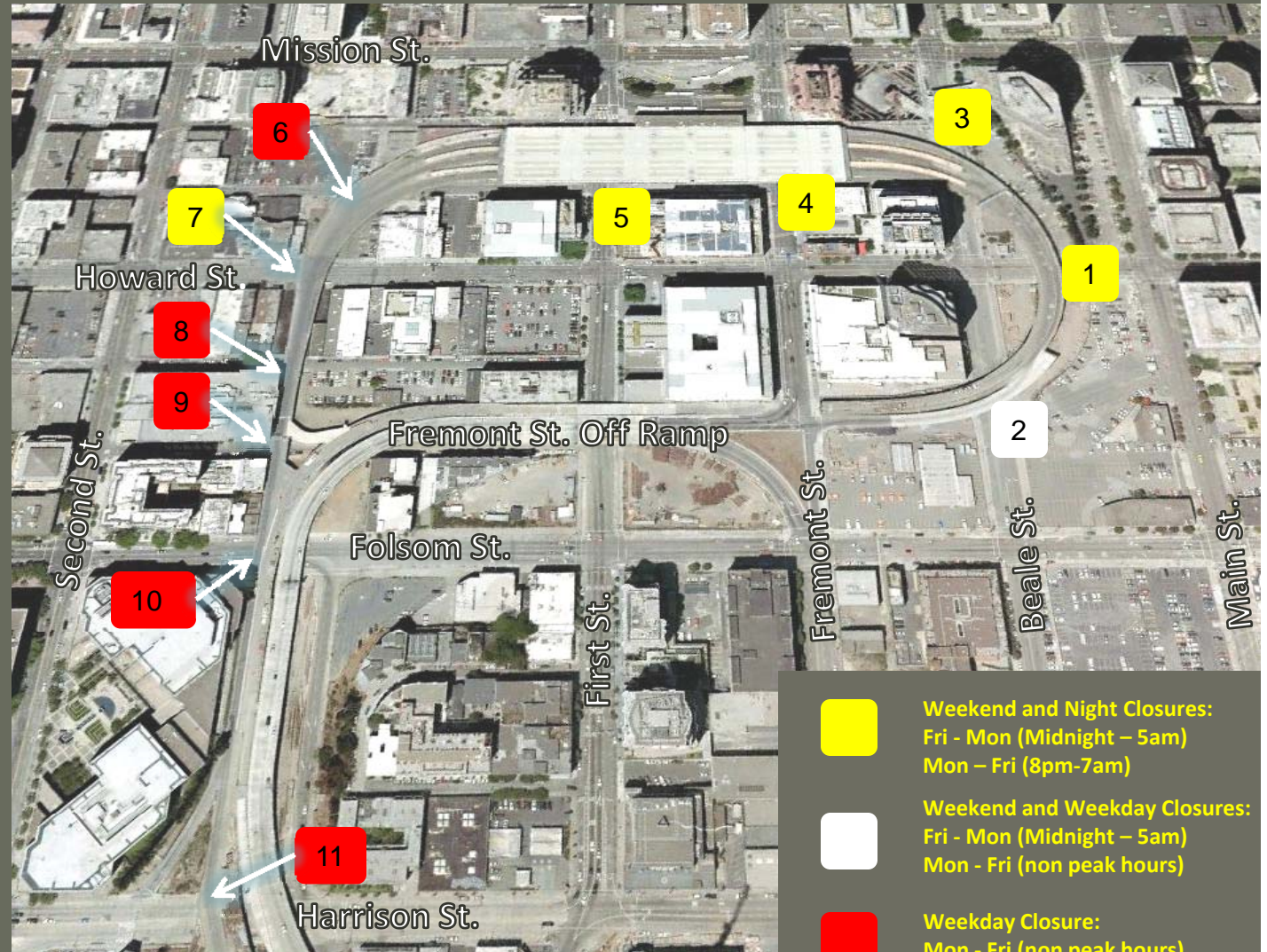




Transbay Transit Center

Street Closures and Bridge Demolition

- 1 Fri Aug 13 - Mon Aug 16
- 2 Fri Aug 20 - Fri Aug 27
- 3 Fri Aug 27 - Sun Sept 26
- 4 Thurs Sept 30 – Sun Oct 10
- 5 Thurs Oct 14 – Sun Oct 24
- 6 Mon Nov 29 – Wed Dec 15
- 7 Thurs Dec 16 – Sun Dec. 19
- 8 Tues Jan 18 – Thurs Jan 20
- 9 Thurs Feb 10 – Mon Feb 14
- 10 Mon Feb 21 – Wed Feb 23
- 11 Mon Mar 7- Thurs Mar 17



- Weekend and Night Closures:
Fri - Mon (Midnight – 5am)
Mon – Fri (8pm-7am)
- Weekend and Weekday Closures:
Fri - Mon (Midnight – 5am)
Mon - Fri (non peak hours)
- Weekday Closure:
Mon - Fri (non peak hours)



Transbay Transit Center

Nights & Weekends Traffic Impacts Demolition of Eastern Ramps

- Ramp demolition and OCS work
- Material movement to stockpile site
- Work Hours:
 - Daytime (non peak)
 - Nighttime (8pm – 7am)
 - Weekends (7am – 8pm)
 - (TJPA and DPW)

 Impacted area



 Traffic/Pedestrian Signage

 Flaggers/10B Officers



Transbay Transit Center

Nights & Weekends Traffic Impacts Demolition of Terminal

- Ramp demolition and OCS work
- Material movement to stockpile site
- Work Hours:
 - Daytime (non peak)
 - Nighttime (8pm – 7am)
 - Weekends (7am – 8pm)
 - (TJPA and DPW)

★ Impacted area





Transbay Transit Center

Daytime Traffic Impacts Demolition of Ramps & Terminal

- Ramp demolition and OCS work
- Material movement to stockpile site
- Work Hours:
Daytime (7am – 5pm)





Transbay Transit Center

Traffic Impacts Demolition of Western Ramps

- Ramp demolition and OCS work
- Material movement to stockpile site
- Work Hours:
Daytime (non peak)
Nighttime (8pm – 7am)
Weekends (7am – 8pm)
(TJPA and DPW)

 Impacted area

