
EXHIBIT A - Trade Subcontractor Bid Package Manual and Forms – Contract #30100089R

B... Trade Package # TG08.9R Roll-Up
Doors and Grilles Package
Addendum #1

January 22, 2015 ...B



Table of Contents

I.	BIDDER QUALIFICATION PROCESS	2
II.	KEY DATES FOR BIDDING PROCESS.....	3
III.	COMMUNICATION WITH WEBCOR/OBAYASHI JOINT VENTURE.....	5
IV.	SCOPE OF THE PACKAGE AND BID ITEM INFORMATION	6
V.	CONSTRUCTION SCHEDULE.....	11
VI.	INSURANCE AND BONDING REQUIREMENTS.....	12
VII.	CONTRACT DOCUMENT LIST	15
VIII.	SUPPLEMENTAL DOCUMENTS LIST	18
ATTACHMENT 1	BID FORM AND SCHEDULE OF BID PRICES	1-1
ATTACHMENT 2	LOGISTICS	2-1

END OF TABLE OF CONTENTS

I. BIDDER QUALIFICATION PROCESS

If the Bidder is not previously qualified, the Bidder shall submit a Request for Qualification (RFQ) package no later than the date shown in the TG08.9R Package Timeline in Section II, “Key Dates for Bidding Process.” The qualified trade subcontractors/joint ventures listed below do not need to submit an RFQ package.

Qualified Trade Subcontractors/Joint Ventures:

- Barton Overhead Door, Inc.
- B.T. Mancini Co., Inc.
- CCDS, Inc. dba Industrial Door Company
- McKendry Door Sales, Inc.
- Smoke Guard California, Inc.
- United California Glass & Door

Notification of the qualification will be provided to the Bidder by the date shown in the TG08.9R Package Timeline. Bids submitted by non-qualified Bidders will not be accepted or opened. Non-qualified Bidders assume all risk and costs associated with submitting a bid if they are deemed not qualified.

Trade Subcontractors submitting an RFQ package during the bid period must use the “Request for Qualifications (RFQ) TG08.9R: Roll-Up Doors and Grilles” form available on the TJPA website (<http://transbaycenter.org/tjpa/doing-business-with-the-tjpa/current-contract-opportunities/roll-up-doors-and-grilles>). The only exceptions are those Trade Subcontractors listed above whose previous qualifications are still valid for this IFB under the “Request for Qualifications TG08.9”, posted 06/03/2014.

No Conflict of Interest: Webcor/Obayashi Joint Venture and the TJPA shall disqualify any Bidder that has a conflict of interest under Section C8.105 of the San Francisco Charter, Government Code Section 1090 *et. seq.*, the Political Reform Act (Government Code Section 87100 *et. seq.*), or any other applicable conflict of interest laws. Any false, incomplete, or otherwise unresponsive statements made in connection with a proposal may be cause for its disqualification at Webcor/Obayashi Joint Venture and the TJPA’s sole discretion.

END OF BIDDER QUALIFICATION PROCESS

II. KEY DATES FOR BIDDING PROCESS

Each Bidder shall submit its “Bid Form,” “Schedule of Bid Prices,” and other applicable sections and forms in the Specifications and the Project Bidding Manual. Required submittal documents for the bid are listed in the Bidding Checklist (BCL) in the Project Bidding Manual.

Package Issuance: The Bid Package, except the drawings and specifications, will be available for download from the TJPA website <http://transbaycenter.org/tjpa/doing-business-with-the-tjpa> or by contacting Webcor/Obayashi Joint Venture by e-mail at TransbayBidding_TG08.9@webcor-obayashi.com. Information regarding how to obtain the drawings and specifications will be posted on the TJPA website with the IFB package on the Bid Package Issuance date.

Questions/Clarifications: Questions or requests for clarifications regarding the Bid Package must be submitted in writing to Webcor/Obayashi Joint Venture no later than the time on the date shown in the TG08.9R Package Timeline below. Questions on Bid Documents (QBD) form in the Project Bidding Manual shall be used for questions or requests for clarifications. Refer to “Communication with Webcor/Obayashi Joint Venture” for contact information.

Value Engineering (VE) Proposals: Each Bidder may submit Value Engineering (VE) Proposals as deductive alternates to their Bid to the TJPA offices at 201 Mission Street, Suite 2100, San Francisco, CA, 94105 by the time and date shown in the TG08.9R Package Timeline below. The VE Proposals shall consist of two parts, technical and cost, and must be submitted in a sealed envelope. No proposals will be accepted after the due date and time. Refer to Specification Section 00 04 20 for details. The VE Proposal submissions must be signed under penalty of perjury in the manner designated at the end of the form, by an individual who has the legal authority to bind the Bidder on whose behalf that person is signing. If any information provided by a Bidder becomes inaccurate, Bidder must immediately notify Webcor/Obayashi Joint Venture and provide updated accurate information in writing, under penalty of perjury.

Bid Submittal: Each Bidder shall submit sealed bids to the TJPA offices at 201 Mission Street, Suite 2100, San Francisco, CA, 94105 by the time and date shown in the TG08.9R Package Timeline below. No bids will be accepted after the due date and time. Bid submissions must be signed under penalty of perjury in the manner designated at the end of the form, by an individual who has the legal authority to bind Bidder on whose behalf that person is signing. If any information provided by a Bidder becomes inaccurate, Bidder must immediately notify Webcor/Obayashi Joint Venture and provide updated accurate information in writing, under penalty of perjury.

Sensitive Security Information/Protected Critical Infrastructure Information: Contract Documents and reference documents for the Transbay Transit Center Project may contain protected information pertaining to sensitive, financial, commercial, or proprietary business information and/or the security of the Project. Such protected information is classified as Confidential Information, Sensitive Security Information (SSI), or Protected Critical Infrastructure Information (PCII). Bidders and Trade Subcontractors shall follow the procedures for the safeguarding of protected information specified in Specification Section 01 35 70, Document Control Procedure for Protected Information. If it is necessary to discuss Confidential Information, SSI or PCII during the Pre-Bid Conference for this Trade Package, all attendees will be required to have been granted conditional access to the associated documents. In order to be granted conditional access, all attendees must have submitted a signed Non-Disclosure Agreement (NDA) to the TJPA, and been approved prior to the Pre-Bid Conference.

Financial Responsibility: Webcor/Obayashi Joint Venture and the TJPA accept no financial responsibility for any costs incurred by a firm in responding to this Bid Package. Submissions to Webcor/Obayashi Joint Venture will become the property of the TJPA and may be used by the TJPA in any way deemed appropriate.

No Waiver: No waiver by Webcor/Obayashi Joint Venture and the TJPA of any provision of this Bid Package shall be implied from any failure by Webcor/Obayashi Joint Venture and the TJPA to recognize or take action on account of any failure by a Bidder to observe any provision of this Bid Package.

No Representations or Warranties: The information presented in this Bid Package and in any report or other information provided by Webcor/Obayashi Joint Venture and the TJPA to Bidders is provided solely for their convenience. It is the sole responsibility of Bidders to assure themselves that the information contained in this Bid Package and other documents are accurate and complete. No representations, assurances or warranties pertaining to the accuracy of such information are or will be provided by the TJPA or its advisors.

A

Package Timeline:

Bid Package Issued:	January 6, 2015
Qualifications Due (for non-prequalified):	January 13, 2015 (2:00 p.m.)
Notification of Qualification (for non-prequalified):	January 16, 2015
Questions/Clarifications (QBD) Due:	January 13, 2015 (2:00 p.m.)
Pre-bid Request for Substitution Due:	January 13, 2015 (2:00 p.m.)
Value Engineering (VE) Proposals Due:	January 13, 2015 (2:00 p.m.)
VE Proposals Review:	January 13, 2015 – January 20, 2015
Bids Due:	January 27, 2015 (2:00 p.m.)
Public Bid Opening:	January 27, 2015 (2:00 p.m.)
Protest Period Ends:	February 3, 2015 (5:00 p.m.)
Notification of Intention to Award Contract:	February 4, 2015
TJPA Board Vote to Approve the Contract Award:	February 12, 2015

A

END OF KEY DATES FOR BIDDING PROCESS

III. COMMUNICATION WITH WEBCOR/OBAYASHI JOINT VENTURE

At no time during the bid process (defined as the time between issuance of this IFB until issuance of the Notice of Intent to Award Contract) shall Bidders contact any person(s) or staff of the TJPA, TJPA Program Management/Program Controls (PMPC) team, Webcor/Obayashi Joint Venture, CM Oversight (CMO), or other TJPA Consultants regarding this IFB. The only contact is for submission of questions using the contact directions below.

Submit questions using the Question on Bid Documents (QBD) form through Webcor/Obayashi Joint Venture. See the Project Bidding Manual for QBD form.

E-mail the completed QBD form to Webcor/Obayashi Joint Venture at
TransbayBidding_TG08.9@webcor-obayashi.com.

END OF COMMUNICATION WITH WEBCOR/OBAYASHI JOINT VENTURE

IV. SCOPE OF THE PACKAGE AND BID ITEM INFORMATION

TG08.9R Roll-Up Doors and Grilles:

1. Package Scope Summary

The scope of work for the TG08.9R Roll-Up Doors and Grilles is described in the Contract Documents. Scope of work includes all labor, materials, equipment, tools, transportation, disposal fees, incidentals and any other costs/fees necessary to complete the work in accordance with the Contract Documents. All necessary work from mobilization to handover to the next Trade Subcontractor shall be included in the Bid.

The major items of work for this Trade Package will consist of the following elements:

- Automatic Smoke and Fire Curtains
- Power Operated Overhead Coiling Grilles
- Power Operated Overhead Coiling Doors
 - a. Non-Rated
 - b. Fire Rated

The Estimated Value of this Trade Package is approximately \$1.8 million.

Trade Subcontractor is required to review the Contract Documents and be familiar with existing Site Conditions in accordance with all requirements set forth in the Prime Contract with respect to its scope of work (see Specification Section 00 07 00 – General Conditions, Article 3.03). This shall include, without limitation, the obligation to carefully review the appropriate portions of the Contract Documents a minimum of 35 days in advance of the work to be executed for the express purpose of checking for any manifest errors, omissions, discrepancies or ambiguities and notifying Webcor/Obayashi Joint Venture in writing promptly within this time period upon discovery of errors, omissions, discrepancies or ambiguities so that Webcor/Obayashi Joint Venture can properly notify the TJPA within the time period prescribed in Specification Section 00 07 00 – General Conditions, Article 3.03.C.

In addition, if Trade Subcontractor performs work that it knows, or reasonably should have known, to be contrary to the Building Code or other applicable laws, statutes, ordinances, rules and regulations without written notice to Webcor/Obayashi Joint Venture, Trade Subcontractor shall assume responsibility for such work and shall bear all costs of correction (see Specification Section 00 07 00 – General Conditions, Article 3.08.E).

2. General Work

All necessary general work shall be included in this package. As needed by Trade Subcontractor, the general work shall include, but shall not be limited to, site preparation, site safety, crane/rescue baskets, temporary lighting for night work, temporary task lighting for traffic/pedestrians, painted temporary barricades for overhead protection including lighting and signage, weather mitigation, surveying, clean-up, dump permits and fees, and small tools and equipment specific for this work package. Refer to Section IV, "Trade Subcontractor Requirements" in the Project Bidding Manual and the Contract Documents for more information.

This Trade Subcontractor is responsible for protection of adjacent properties, mitigation measures and monitoring, as specified in the Contract Documents.

This Trade Subcontractor's cost of the general work, overhead, office cost, applicable permits/legal fees, administration, bid bonds, insurances, contingency, profit and other necessary activities for this project shall be included in the bid amount and shall be distributed into the Bid Items.

The following items for this package are discussed in detail in the Project Bidding Manual. Additional requirements and/or clarifications that are specific to the current Trade Package are included below and align, as indicated, with the corresponding section of the Project Bidding Manual.

III. Instructions to Bidders

E. Additional Bidding Notes

2. Exclusions/Clarifications/Qualifications

a) Do not include in Bid Price:

1. Project ID Signs called for in Specification Section 01 15 01.
2. Inspector's Office called for in Specification Section 01 15 90, Subsection 1.3.
3. Structural Steel Supports within "W" systems for the Automatic Smoke and Fire Curtains, Power Operated Overhead Coiling Grilles and Power Operated Overhead Coiling Doors.
4. Metal Cladding, Stainless Steel Fascia, Stainless Steel Flashing and Prefinished Aluminum Enclosures that conceal support structure. Prefinished Aluminum Coiling Door Housings and Housing Enclosures are not excluded, and are part of this Trade Package.
5. "Bracing by Grille Contractor" indicated on Detail 1/A1-7703 and 3/A1-7704.

IV. Trade Subcontractor Requirements

A. General Information – Supplemental Instructions

7. Inspections and Testing

- g) Furnish all third party testing, review and inspection for this scope of work no explicitly called out to be paid for by the owner.

A

25. Cranes/Hoisting

- d) A Webcor/Obayashi Joint Venture crane will be available from approximately the third quarter of 2015 through the second quarter of 2017. Crane usage for all activities, including but not limited to, unloading deliveries, loading materials and equipment into the building, use in erection or placement of work shall be scheduled in coordination with Webcor/Obayashi Joint Venture. Crane time is not guaranteed until it is scheduled. All work performed outside of the Webcor/Obayashi Joint Venture crane availability is the responsibility of the Trade Subcontractor.
- e) This hoisting excludes rigging and distribution or spreading of materials once landed on the floor or roof. If cranes are used in the street include all costs associated for lane and street closures. Account for neighborhood disruption, allowable lane/street closure time periods and moratorium blackout periods regulated by the City and County of San Francisco.
- f) If small hoisting equipment such as forklifts is required on the roof, account for all rooftop obstacles such as seismic joints, footing and support walls, upturned beams, shear keys, light pedestals, and all other obstacles which may be present and need to be maneuvered around so that damage does not occur. Reference Attachment 2 Logistics exhibit SL-027. Account for any reinforcement or shoring which may be required to support the structure for all hoisting equipment with a full load. Ensure that damage does not occur to work of other trades including, but not limited to, waterproofing, structural elements, light column, skylights, etc. The Structural Engineer of Record of the building must approve all proposed hoisting plans if they impose a load to the building. Webcor/Obayashi Joint Venture must approve all proposed hoisting plans.

A

D. Small Business Enterprise (SBE) Program

The SBE utilization goal for this Trade Subcontractor is 10% of the total value of this Trade Subcontractor's bid value.

3. Base Bid Item Scope

Roll-Up Doors and Grilles Package Scope of Work

This section is supplemental information only to the Contract Documents used to describe how the bid pricing is to be broken down and to generally describe the scope of the work defined in the Contract Documents. All necessary work from mobilization to handover to the next Trade Subcontractor shall be included in the bid items.

The amount paid for all of the items below shall include full compensation for furnishing all labor, materials, equipment, installation, welding, tools, transportation, disposal fees, incidentals, all patch work including multiple mobilization/demobilizations as required, and any other costs/fees necessary to complete this work.

Bid Pricing shall be split into "Below Ground Level" and "Ground Level and Above" due to the difference in project funding sources for these two sections. Trade Subcontractor shall allocate its cost to each appropriate section.

Roll-Up Doors and Grilles Primary Specifications

08 33 16 Power Operated Overhead Coiling Grilles
08 33 23 Power Operated Overhead Coiling Doors
08 71 10 Base Building Door Hardware
10 44 00 Automatic Smoke and Fire Curtains

Roll-Up Doors and Grilles Detailed Scope of Work

1. Furnish and install all Automatic Smoke and Fire Curtains including all associated materials and work for a complete system per the Contract Documents and manufacturer's requirements.
2. Furnish and install all Power Operated Overhead Coiling Grilles including all associated materials and work for a complete system per the Contract Documents and manufacturer's requirements.
3. Furnish and install all Power Operated Overhead Coiling Doors including all associated materials and work for a complete system per the Contract Documents and manufacturer's requirements.
4. The TG10.4 Electrical, Communications, Security, and Integrated Networks Trade Subcontractor will provide a single point of connection for power, data and lifesafety to all Roll-Up Doors and Grilles. The TG08.9R Roll-Up Doors and Grilles Trade Subcontractor will:
 - a. Provide the final connection to the single point of connection provided to the TG10.4 Electrical, Communications, Security, and Integrated Networks Trade Subcontractor.
 - b. Furnish and install all conduit, wiring within the Roll-up Doors and Grilles systems including, but not limited to, wiring between motors, operating devices, overhead door interface cabinets, spare wiring, vehicle detection loops, sensors and safety devices per the Contract Documents.
5. At locations where HSS supports or Structural Steel are shown within "W" systems (W-2, W-4, W-5, W-14, W-9, W-16, W-17 or W-19), metal cladding or prefinished aluminum enclosures, the TG08.11R Glass Curtain Walls and Skylights, TG08.4 Metal Panels, TG08.6R Metal Ceiling, TG07.3 Miscellaneous Metals, or TG07.1R Superstructure Structural Steel Trade Subcontractors will provide HSS Supports, associated bracing and steel angles. The TG08.9R Roll-Up Doors and Grilles Trade Subcontractor shall furnish and install fasteners/anchors required to connect the Roll-Up Door and Grilles, Door Track, Motor and Housing from the HSS supports and angles provided by others. This Trade Subcontractor must coordinate and provide necessary mounting and data information during the Engineering and Shop Drawing phase of the TG08.11R Glass Curtain Walls and Skylights, TG08.4 Metal Panels, TG08.6R Metal Ceiling, and TG07.3 Miscellaneous Metals Trade Packages.
6. At locations where the Roll-Up Doors and Grilles are supported at CMU, Concrete Block Walls or Concrete Walls, the TG07.3 Miscellaneous Metals Trade Subcontractor will furnish and install all angles required to support the Roll-Up door and Grilles, side rails, door track, motor and housing. The TG08.9R Roll-Up Doors and Grilles Trade Subcontractor shall furnish and install fasteners/anchors required to connect the Roll-Up Door and Grilles, door track, motor and housing from the HSS supports and angles provided by others.
7. Provide all commissioning for electrified components and operators in this trade package related to final acceptance.
8. The red and blue line marked up drawings and narrative included with the ASI documents are designed to relay specific scopes of work that are modified to reflect scope changes. Redline markups in ASI drawings are only to be used to indicate scope modifications. These scope modifications are to be applied to the current set of drawings and specifications.

9. D Series Drawings: The ASI drawings marked as A1-XXXXD supplement the most current sheet with the same sheet number without the “D”. For example sheet A1-8229D supplements A1-8229.

END OF SCOPE OF THE PACKAGE AND BID ITEM INFORMATION

V. CONSTRUCTION SCHEDULE

A

Refer to Project Bidding Manual Rev. 29, Section IV.C for Construction Schedule.

A

END OF CONSTRUCTION SCHEDULE

VI. INSURANCE AND BONDING REQUIREMENTS

The insurance requirements outlined below supersede the related requirements in Specification Section 00 08 05 and Section 16 of the Long Form Subcontract.

1. TRADE SUBCONTRACTOR'S LIABILITY INSURANCE

Trade Subcontractor shall maintain in full force and effect, for the period covered by the subcontract, the following liability insurance with the following minimum specified coverage or coverage as required by laws and regulations, whichever is greater:

- A. Workers' Compensation in the statutory amount, including Employers' Liability coverage with limits not less than \$1,000,000 each accident, injury, or illness, and coverage for Federal Employers Liability Act.
- B. Commercial General Liability insurance with limits not less than \$2,000,000 each occurrence combined single limit for bodily injury and property damage, including coverage for Contractual Liability, Independent Contractors, Explosion, Collapse, and Underground (XCU), Personal Injury, Broadform Property Damages, and completed operations. The required limit may be satisfied through a combination of primary commercial general liability and excess liability policies. Notwithstanding Section 16.7 of the Long Form Subcontract, the requirement to maintain \$2,000,000 in Commercial General Liability Insurance shall apply ONLY to Trade Subcontractor. Trade Subcontractor's subcontractors and/or lower-tier subcontractors shall maintain the levels of Commercial General Liability Insurance set forth in Section 16 of the Long Form Subcontract agreement.
- C. Commercial Automobile Liability insurance with limits not less than \$1,000,000 each occurrence combined single limit for bodily injury and property damage, including owned, hired or non-owned vehicles, as applicable.

2. ADDITIONAL COVERAGES

- A. In the event that Trade Subcontractor employs professional land surveyor(s) for performing field engineering, Trade Subcontractor shall have evidence of or shall require its retained engineers to have evidence of \$1,000,000 in professional liability insurance covering that scope of work, consistent with the standard requirements set forth in Article 16 of the Long Form Subcontract.

3. INSURANCE FOR OTHERS

For general liability and automobile liability Trade Subcontractor shall include as additional insured the Contractor (Webcor/Obayashi Joint Venture), TJPA, its board members, and all authorized agents and representatives, and members, directors, officers, trustees, agents and employees of any of them.

4. FORMS OF POLICIES AND OTHER INSURANCE REQUIREMENTS

- A. Workers' Compensation Insurance shall be submitted to the Contractor before the commencement of any of the Work on Site.
- B. Before commencement of the work of this subcontract, certificates of insurance in form and with insurers acceptable to Contractor, evidencing all required insurance and with proper endorsements from Trade Subcontractor's insurance carrier identifying as additional insured the parties indicated under paragraph 3 above, shall be furnished to Contractor with complete copies of policies in accordance with the Project Bidding Manual.
- C. Approval of the insurance by the Contractor shall not relieve or decrease the extent to which Trade Subcontractor or subcontractors of any tier may be held responsible for payment of any and all damages resulting from its operations. All policies of insurance and certificates shall be satisfactory to Contractor.
- D. Trade Subcontractor and its subcontractors shall comply with the provisions of California Labor Code Section 3700. Prior to commencing the performance of work, Trade Subcontractor and all of its subcontractors shall submit to the Contractor a certificate of insurance evidencing liability for workers compensation or proof of self-insurance in accordance with the provisions of the California Labor Code.
- E. Liability insurance, except for professional liability insurance, shall be on an occurrence basis, and said insurance shall provide that the coverage afforded thereby shall be primary coverage (and non-contributory to any other existing valid and collectable insurance) to the full limit of liability stated in the declaration, and such insurance shall apply separately to each insured against whom claim is made or suit is brought, but the inclusion of more than one insured shall not operate to increase the insurer's limits of liability.
- F. Trade Subcontractor shall maintain professional liability coverage continuously throughout the term of this subcontract, and without lapse, for a period three years beyond the Contract Final Completion date to the effect that should occurrences during the Contract term give rise to claims made after expiration of the Contract, such claims shall be covered by such claims-made policies.
- G. Each such policy shall provide that no cancellation or non-renewal shall occur without the carrier giving to Contractor at least 30 days written notice prior thereto.

All notices shall be made to:

Webcor / Obayashi Joint Venture
1751 Harbor Bay Parkway, Suite 200
Alameda, CA 94502

- H. Trade Subcontractor, upon notification of receipt by Contractor of any such notice, shall provide Contractor a certificate of the required new or renewed policy at least 10 days before the effective date of such cancellation, change or expiration, with a complete copy of new or renewed policy, if requested.
- I. If, at any time during the life of this subcontract, Trade Subcontractor fails to maintain any item of the required insurance in full force and effect, all work of this subcontract may, at Contractor's sole option, be discontinued immediately, and all subcontract payments due or that become due will be withheld until notice is received by the Contractor as provided in the immediately preceding Paragraph 4.G that such insurance has been restored to full force and effect and that the premiums thereof have been paid for a period satisfactory to the Contractor.
- J. Any failure to maintain any item of the required insurance may, at Contractor's sole option, be sufficient cause for termination for default of this subcontract.

5. QUALIFICATIONS

Trade Subcontractor must provide coverage from insurance companies who shall be legally authorized to engage in the business of furnishing insurance in the State of California. All insurance companies shall have a current A.M. Best Rating not less than "A-, VIII" and shall be satisfactory to Contractor.

6. SUBGUARD AND BONDING

- A. Trade Subcontractor is required to provide a Bid Bond for 5% of the total contract value.
- B. Trade Subcontractor is not required to provide a Payment and Performance Bond. Subguard will be used in lieu of a Payment and Performance Bond.
- C. Trade Subcontractor shall provide all documentation required by Subguard Surety to verify qualification for program.

END OF INSURANCE REQUIREMENTS

VII. CONTRACT DOCUMENT LIST

The Contract Documents for this Trade Package include the following:

B... A

Document Name	Description	Revision Name	Issue Date
Long Form Subcontract		Rev. 0	2015-01-06
Specification Division 00 and Division 01	Division 00 and Division 01 defined in Specification Section 00 01 10		2014-08-11
Technical Specifications	IFC Main Package	Field Order No. T-00027 – Main Package IFC	2014-03-31
Technical Specifications	SFPUC IFB ES Drawings	Field Order # T-00029	2014-06-19
Technical Specifications	MEP/TE/SE/VT Addendum #3	CR No. T-111 ASI #117	2014-06-27
Technical Specifications	MEP/TE/SE/VT Addendum #4	CR No. T-112 ASI #118	2014-06-30
Technical Specifications	VE Round 2 + VE in MEP/TE/SE/VT IFB Add 4	CR No. T-113 ASI #119	2014-07-02
Technical Specifications	TG08.3, TG08.7 and TG08.10	CR No. T-115 ASI #120	2014-07-11
Technical Specifications	MEP/TE/SE/VT IFB Addendum #5	CR No. T-119 ASI #121	2014-07-18
Technical Specifications	VE Round 3	CR No. T-121 ASI #122	2014-07-23
Technical Specifications	Civil/Utilities and RFI Responses	CR No. T-122 ASI #123	2014-08-06
Technical Specifications	VE Round 4	CR No. T-123 ASI #124	2014-08-18
Technical Specifications	TG10.4 Electrical	CR. No. T-124 ASI #125	2014-08-19
Technical Specifications	TG08.10 – Glass Curtain Wall (W-2, W-3, W-4, W-6, W-8)	CR No. T-125 ASI #126	2014-08-22
Technical Specifications	TG12.2 – OCS	Field Order # T-00033	2014-09-10
Technical Specifications	Bidding Clarifications and RFI Responses	CR No. T-126 ASI #127	2014-09-12
Technical Specifications	SFPUC IFB ES Drawings Revision 1	Field Order # T-00029R1	2014-09-16
Drawings	IFC Main Package	Field Order No. T-00027 – Main Package IFC	2014-03-31
Drawings	SFPUC IFB ES Drawings	Field Order # T-00029	2014-06-19
Drawings	MEP/TE/SE/VT Addendum #3	CR No. T-111 ASI #117	2014-06-27

Document Name	Description	Revision Name	Issue Date
Drawings	MEP/TE/SE/VT Addendum #4	CR No. T-112 ASI #118	2014-06-30
Drawings	VE Round 2 + VE in MEP/TE/SE/VT IFB Add 4	CR No. T-113 ASI #119	2014-07-02
Drawings	TG08.3, TG08.7 and TG08.10	CR No. T-115 ASI #120	2014-07-11
Drawings	MEP/TE/SE/VT IFB Addendum #5	CR No. T-119 ASI #121	2014-07-18
Drawings	VE Round 3	CR No. T-121 ASI #122	2014-07-23
Drawings	Civil/Utilities and RFI Responses	CR No. T-122 ASI #123	2014-08-06
Drawings	VE Round 4	CR No. T-123 ASI #124	2014-08-18
Drawings	TG10.4 Electrical	CR No. T-124 ASI #125	2014-08-19
Drawings	TG08.10 – Glass Curtain Wall (W-2, W-3, W-4, W-6, W-8)	CR No. T-125 ASI #126	2014-08-22
Drawings	TG12.2 – OCS	Field Order # T-00033	2014-09-10
Drawings	Bidding Clarifications and RFI Responses	CR No. T-126 ASI #127	2014-09-12
Drawings	SFPUC IFB ES Drawings Revision 1	Field Order # T-00029R1	2014-09-16
3D Models	Refer to the following file sharing website: https://webcor.box.com/s/st43wnq91t2t8d0nogvj Password: WebcorBid!	CR No. T-123 ASI #124	2014-08-18
3D Models	Refer to the following file sharing website: https://webcor.box.com/s/48xt4b9l3ky4ukw494n6 Password: WebcorBid!	CR No. T-126 ASI #127	2014-09-12
QBDs	Questions on Bidding Documents (QBDs)	TG08.9R IFB	2015-01-22
RFI's	Preconstruction RFIs (P1-0001 – P1-0670) Refer to the following link: https://webcor.box.com/s/y6j9sumu82ho7n5b728i		2014-11-04
Project Bidding Manual		Rev. 29	2015-01-13
<u>Exhibit A</u>	<u>Trade Subcontractor Bid Package Manual and Forms – Contract #30100089R</u>	Rev. AB	2015-01-16 2015-01-22
Exhibit B	Warranty		2010-09
Exhibit C	Lien Releases	Rev. 07/2012	2012-08-22
Exhibit D	Sample Certificate of Insurance and Additional Insured Endorsement		
Exhibit E	LEED Subcontractor Submission Letter and Data Sheet	Rev. 3	2014-03-13

Document Name	Description	Revision Name	Issue Date
Exhibit G	Subcontractor Payment Requisition		2012-04-03
Exhibit H	Site Specific Safety Plan	Rev. 9	2014-07-10
Exhibit I	Schedule	Rev. 1	2015-01-14
Exhibit J	Contractor Quality Control Plan	Rev. 10	2013-11-04
Exhibit K	Sediment and Erosion Control Plan		2011-02
Exhibit L	Hazardous Materials Management Plan	Rev. 1	2011-03-11
Exhibit M	RFI Q&A Log		2015-01-05
Exhibit N	Noise & Vibration Mitigation Management Plan	Rev. 4	2012-09-07
Exhibit O	Air Quality Management Plan	Rev. 5	2012-01-16
Exhibit P	Construction Waste Management Plan	Rev. 6	2013-11-07
Exhibit Q	Apprenticeship Program	Rev. 0	2012-03-23
Exhibit R	Survey Information	Rev. 0	2012-03-23
Exhibit S	Traffic Control Plan	Rev. 2	2012-08-22
Exhibit U	Submittal Schedule	Rev. 0	2013-11-07
Exhibit W	Waterproofing		2011-05

A ...B

END OF CONTRACT DOCUMENT LIST

VIII. SUPPLEMENTAL DOCUMENTS LIST

This Trade Subcontractor shall review all of the supplemental documents listed below, which have been determined to be related to this Trade Package scope of work, and be familiar with all conditions affecting this Trade Subcontractor's scope of work. All associated costs due to the conditions and plans of the reference documents including all coordination shall be included in the Bid Amount.

Scoping Drawings are for use in clarifying the general scope of work, but are not all inclusive of the scope described. If a conflict or omission exists within the Scoping Documents and/or the Detailed Scope of Work, the written scope shall govern.

The Supplemental Documents for TG08.9R Roll-Up Doors and Grilles are listed below and are currently available through Webcor/Obayashi Joint Venture's FTP website:

Document Type	Document Name	Revision Date
Scoping Drawing	A1-2202 Lower Concourse Level Zone 02 Floor Plan	09-30-2014
Scoping Drawing	A1-2203 Lower Concourse Level Zone 03 Floor Plan	09-30-2014
Scoping Drawing	A1-2204 Lower Concourse Level Zone 04 Floor Plan	09-30-2014
Scoping Drawing	A1-2205 (SKA-3491) Lower Concourse Level Zone 05 Floor Plan	09-30-2014
Scoping Drawing	A1-2207 (SKA-3493) Lower Concourse Level Zone 07 Floor Plan	09-30-2014
Scoping Drawing	A1-2210 Lower Concourse Level Zone 10 Floor Plan	09-30-2014
Scoping Drawing	A1-2250 Lower Ramp Plan	09-30-2014
Scoping Drawing	A1-2302 ASI 119 Ground Level Zone 02 Floor Plan	09-30-2014
Scoping Drawing	A1-2303 Ground Level Zone 03 Floor Plan	09-30-2014
Scoping Drawing	A1-2304 Ground Level Zone 04 Floor Plan	09-30-2014
Scoping Drawing	A1-2306 Ground Level Zone 06 Floor Plan	09-30-2014

Scoping Drawing	A1-2402 Second Level Zone 02 Floor Plan	09-30-2014
Scoping Drawing	A1-2403 Second Level Zone 03 Floor Plan	09-30-2014
Scoping Drawing	A1-2404 Second Level Zone 04 Floor Plan	09-30-2014
Scoping Drawing	A1-2502 (SKA-3459) Bus Deck Level Zone 02 Floor Plan	09-30-2014
Scoping Drawing	A1-2503 (SKA-3629) Bus Deck Level Zone 03 Floor Plan	09-30-2014
Scoping Drawing	A1-2504 (SKA-3631) Bus Deck Level Zone 04 Floor Plan	09-30-2014
Scoping Drawing	A1-2505 (SKA-3633) Bus Deck Level Zone 05 Floor Plan	09-30-2014
Scoping Drawing	A1-2507 (SKA-3639) Bus Deck Level Zone 07 Floor Plan	09-30-2014
Scoping Drawing	A1-7416 Vehicle and Bicycle Ramp Overhead Roll-Up Door Plan Details	09-30-2014
Scoping Drawing	A1-7417 Vehicle and Bicycle Ramp Overhead Door Section Details	09-30-2014
Scoping Drawing	A1-7704 (SKA-3605) Overhead Coiling Grille & Door Details Bus Deck Level	09-30-2014
Scoping Drawing	A1-7832A Aluminum Panel Cladding (W-5) & Stair/Elevator Shaft Wall Details - Alternate	09-30-2014
Scoping Drawing	A1-8153 (SKA-3827-R1) Aluminum Framed Curtain Wall (W-2) System Sheet	09-30-2014
Scoping Drawing	A1-8172 (SKA-3846-R1) Aluminum Framed Curtain Wall (W-2) System Details	09-30-2014
Scoping Drawing	A1-8176 Aluminum Framed Curtain Wall (W-2) System Details	09-30-2014
Scoping Drawing	A1-9711 Overhead Door/Overhead Grill Door Schedule	09-30-2014
Scoping Drawing	A1-2202 Lower Concourse Level Zone 02 Floor Plan	09-30-2014
Scoping Drawing	A1-2203 Lower Concourse Level Zone 03 Floor Plan	09-30-2014

Trade Subcontractor is responsible for reviewing and coordinating its work with all supplementary information provided.

The Supplementary Documents are available for download on the following FTP website:

TG08.9R - <https://webcor.box.com/s/4ie6r8hm2dmmsanyfqd6>

Password: WebcorBid!

END OF SUPPLEMENTAL DOCUMENTS LIST

ATTACHMENT 1 BID FORM AND SCHEDULE OF BID PRICES

TO THE TJPA EXECUTIVE DIRECTOR

In response to the Advertisement for Bids for the following public work:

TG08.9R – Roll-Up Doors and Grilles

The undersigned Bidder hereby proposes and agrees to execute the required contract, shall it be awarded to said Bidder, and to do all the work and furnish all the materials therefor, all in accordance with the Specifications and Drawings referred to in said Advertisement for Bids and at the prices named in the attached Schedule of Bid Prices.

The undersigned declares: That it is the Bidder (or by holding the position below indicated is authorized to execute this Bid Form on behalf of the Bidder); that said Bidder submits this Bid; that said Bidder has not, nor have any of its agents, officers, representatives or employees, been guilty of collusion with any officer or representative of Webcor/Obayashi Joint Venture or the TJPA, or with any other party or parties in the submission of this Bid; nor has said Bidder received any preferential treatment by any officer or employee of Webcor/Obayashi Joint Venture or the TJPA in the making or submitting of this Bid. The undersigned declares under penalty of perjury that all representations made on this Bid Form are true and correct.

Executed on _____ 20 _____

Telephone Number

Name of Firm or Corporation

Bidder or Authorized Representative

Position in Firm or Corporation

S.F. Business Tax Registration
Certificate Number

Address of Firm or Corporation Zip Code

Contractor's California License No.:

License Expiration Date:

BOND OR CHECK REQUIRED: There is herewith attached, as required by law, bid security in accordance with Project Bidding Manual.

NONDISCRIMINATION IN CONTRACTS AND SMALL BUSINESS ENTERPRISE PROGRAM:
Provisions of chapter 12B (including its implementing Rules and Regulations) of the San Francisco Administrative Code, and the TJPA Small Business Enterprise Program are incorporated herein and by reference made a part of the Bid Sections as though fully set forth. The Bidder and all lower-tier subcontractors and suppliers shall comply with these provisions and shall submit all required sections in a timely manner.

SCHEDULE OF BID PRICES
TG08.9R – Roll-Up Doors and Grilles

Name of Bidder: _____

The undersigned, having examined all referenced documents and the Drawings, understanding the terms and conditions of the Contract Documents and the local conditions affecting the performance and costs of the Work, and having fully inspected the Site in all its particulars, hereby proposes and agrees to fully perform the Work as indicated on the Drawings and in accordance with the requirements of the Contract Documents within the time stated therein, and for the following price(s):

No.	Item Description	Unit of Measure	Bid Price
<u>Below Ground Level</u>			
1	Power Operated Overhead Coiling Grilles	LS	
2	Power Operated Overhead Coiling Doors	LS	
3	Automatic Smoke and Fire Curtains	LS	
<u>Ground Level and Above</u>			
4	Power Operated Overhead Coiling Grilles	LS	
5	Power Operated Overhead Coiling Doors	LS	
6	Automatic Smoke and Fire Curtains	LS	
TOTAL BASE BID PRICE (Sum of Items 1+2+3+4+5+6)			
PERFORMANCE AND PAYMENT BOND RATE (This is for informational purposes only)			%
POTENTIAL PAYMENT AND PERFORMANCE BOND COST (Total Base Bid Price x Bond Rate; this is for informational purposes only)			\$

Bidder shall furnish a price for all Bid items, including all alternates, set forth in the Schedule of Bid Prices. Failure to furnish a price for all items set forth in the Schedule of Bid Prices shall render the Bid non-responsive and will be cause for its rejection. If an item is left blank, the price shall be assumed to be zero (\$0.00).

In case of discrepancy between the sum of Bid item amounts and the Total Base Bid Price, the sum of said amounts shall prevail. In case of discrepancy between words and figures, the words shall prevail.

Accepted VE Proposals, if any, shall be deducted from the Total Base Bid Price to determine the Bidder's Total Bid Price.

Bidder acknowledges and agrees that this Bid, if not withdrawn prior to the scheduled time for receipt of Bids, shall not be withdrawn for a period of 90 days thereafter.

Total Bid Price: \$_____

In Written Words: _____

Bid submitted by:

_____(seal)
Name of Firm, Corporation, Partnership or Joint Venture

Names of All Partners, if Partnership

State of Incorporation, if Corporation

Signature of Bidder or Authorized Representative

Date of Bid

Name and Title of Authorized Representative

Note: If Bidder is a corporation, set forth the legal name of the corporation together with the signature of the officer or officers authorized to sign contracts on behalf of the corporation. If Bidder is a partnership, set forth the name of the firm together with the signature of the partner or partners authorized to sign contracts on behalf of the partnership. A corporate authority document which indicates individual is authorized to execute bid documents on behalf of the Firm, Corporation, Partnership or Joint Venture shall be attached.

END OF BID FORM AND SCHEDULE OF BID PRICES

ATTACHMENT 2 LOGISTICS

The following attached drawings present the conceptual logistical as-built plans. Locations and configurations are for reference and subject to change:

B... A

SL-001 Site Logistics Plan dated 03/05/2014
SL-002 Site Truck Routing Plan dated 03/22/2012
SL-025 Site Logistics Construction Zones dated 05/28/2014
SL-027 Rooftop Obstructions – For Reference Only dated 12/05/2013
A101 Personnel and Material Hoist Layout – Bracing dated 12/20/2013
A102 Personnel and Material Hoist Layout – Lower Concourse dated 12/20/2013
A103 Personnel and Material Hoist Layout – Ground Level dated 12/20/2013
A104 Personnel and Material Hoist Layout – Second Level dated 12/20/2013
A105 Personnel and Material Hoist Layout – Bus Deck Level dated 12/20/2013
A106 Personnel and Material Hoist Layout – Roof Level dated 12/20/2013
A107 Personnel and Material Hoist #1 Location dated 12/20/2013
A108 Personnel and Material Hoist #2 Location dated 12/20/2013
A109 Personnel and Material Hoist #3 Location dated 12/20/2013
A110 Personnel and Material Hoist #4 Location dated 12/20/2013
X-08 Temporary Platform dated 05/12/2013
~~X-15 Rooftop Crane and Tower Crane Logistics dated 04/23/2013~~
~~X-16 Natoma Howard St. Area Logistics dated 04/23/2013~~
~~X-17 Rail Crane Logistics dated 12/20/2013~~
~~X-18 Rail Crane Logistics 3D Section dated 12/20/2013~~

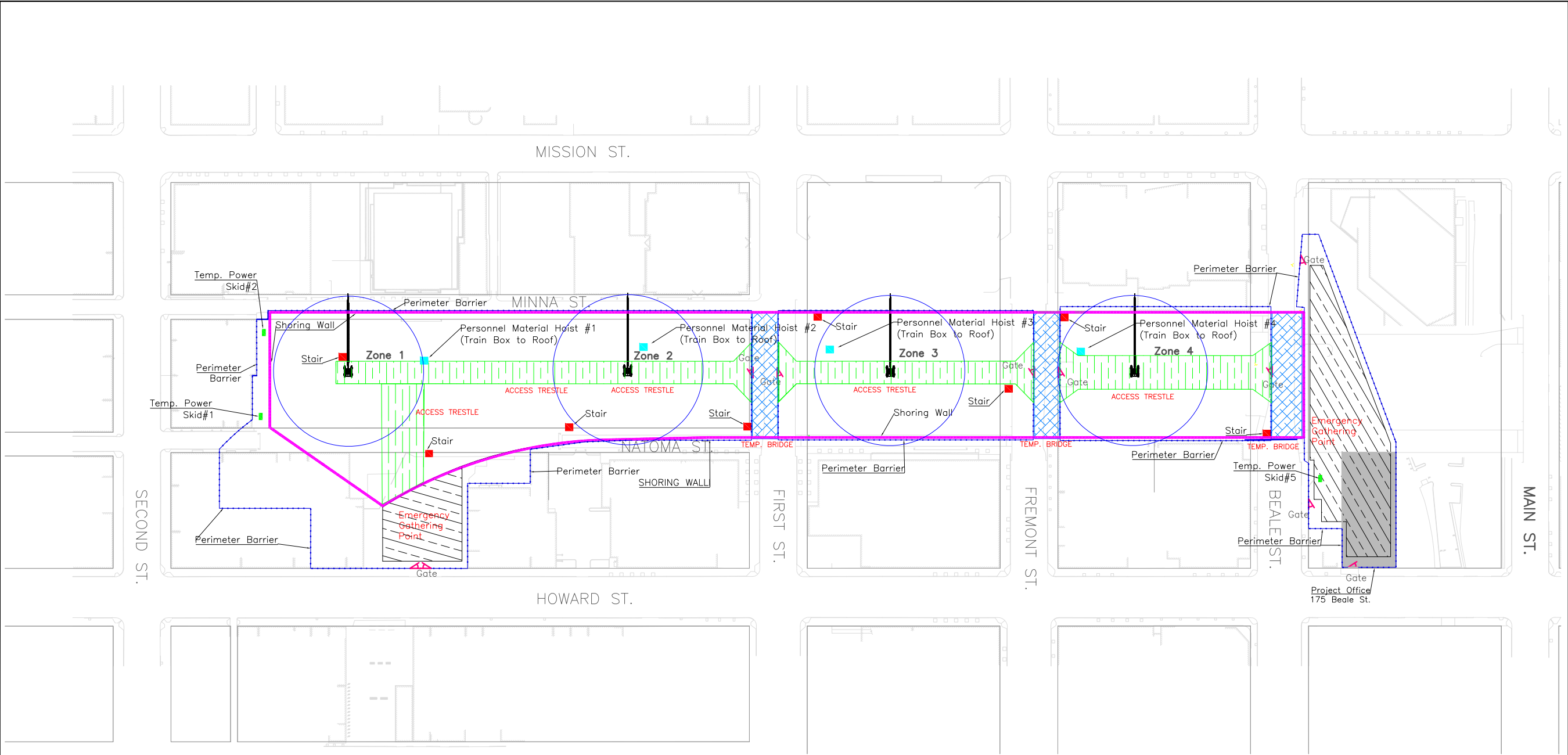
A ...B

END OF LOGISTICS

ISSUANCE LOG

REV No.	ISSUE	DATE
0	Issued For Bid TG08.9R	2015-01-06
A	Addendum #1	2015-01-16
B	Addendum #2	2015-01-22

END OF EXHIBIT A



GENERAL NOTES

1. No jobsite parking available.

2. No loading or unloading of materials on city streets at any time. Violators will be cited and fined.

3. All deliveries must be coordinated with Webcor/Obayashi.

4. Storage of materials in Staging Areas must be coordinated with Webcor/Obayashi.

5. All visitors must check in at the Webcor/Obayashi project office.

6. Perimeter barrier location is for reference only. Each trade subcontractor shall identify the required perimeter barrier locations in the contract documents.
7. Location, size, and width of access trestles and temporary bridges to be designed per the requirements in the construction documents. Actual Locations are subject to change.

8. Personnel Material Hoists and stair locations are diagrammatic in nature and do not depict placement of hoists and stairs. Location to be coordinated with and approved by Webcor/Obayashi.

9. For staging areas, locations, and availability, see the latest issued revision of spec 01 14 19 – Restriction of Use to Site Areas. Usage of these areas will be at the discretion and assigned by Webcor/Obayashi. Refer to Contract Documents.
10. Location and configuration of gates are for reference only. For location and design refer to contract documents.

PROJECT NORTH

NOT FOR CONSTRUCTION

IMPORTANT NOTE:
THESE DRAWINGS ARE NOT INTENDED TO REPLACE THE DESIGN ARCHITECTURAL AND STRUCTURAL DRAWINGS. ALL DIMENSIONS, LOCATIONS, AND ELEVATIONS SHOWN ON THIS DRAWING ARE TO BE CHECKED ON-SITE AGAINST THE LATEST DESIGN AND DOCUMENTATIONS.

1751 HARBOR BAY PARKWAY
SUITE 200
ALAMEDA, CA 94502
Phone: (510) 748-1900
Fax: (510) 748-7829

JOBSITE
Address: 175 BEALE ST
SAN FRANCISCO, CA 94105
Phone: 415-978-5700
Fax: 510-748-7830

TRANSBAY TRANSIT CENTER

SAN FRANCISCO, CA

Revision Block		
Rev. No.	Description	Date
02	Updated Man & Material Hoists	08-13-10
D	Updated for TG03 BSE Addendum 03	09-27-10
E	Updated for TG4.3/TG04.4 RUP	10-12-10
F	Updated for TG03 BSE Addendum 05	10-20-10
G	Updated for TG06.1 & TG06.2	03-22-12
H	Updated for TG06 Below Grade IFB	05-10-12
I	Updated for TG06 Below Grade Addendum 01	06-22-12
J	Updated for TG06 Below Grade Addendum 02	08-22-12
K	Updated for TG05.8 Addendum #5 RFP	03-05-2014
Drawn By	RC	Date 10-20-10
Checked By	MP	Date 10-20-10

Job No.: 30100

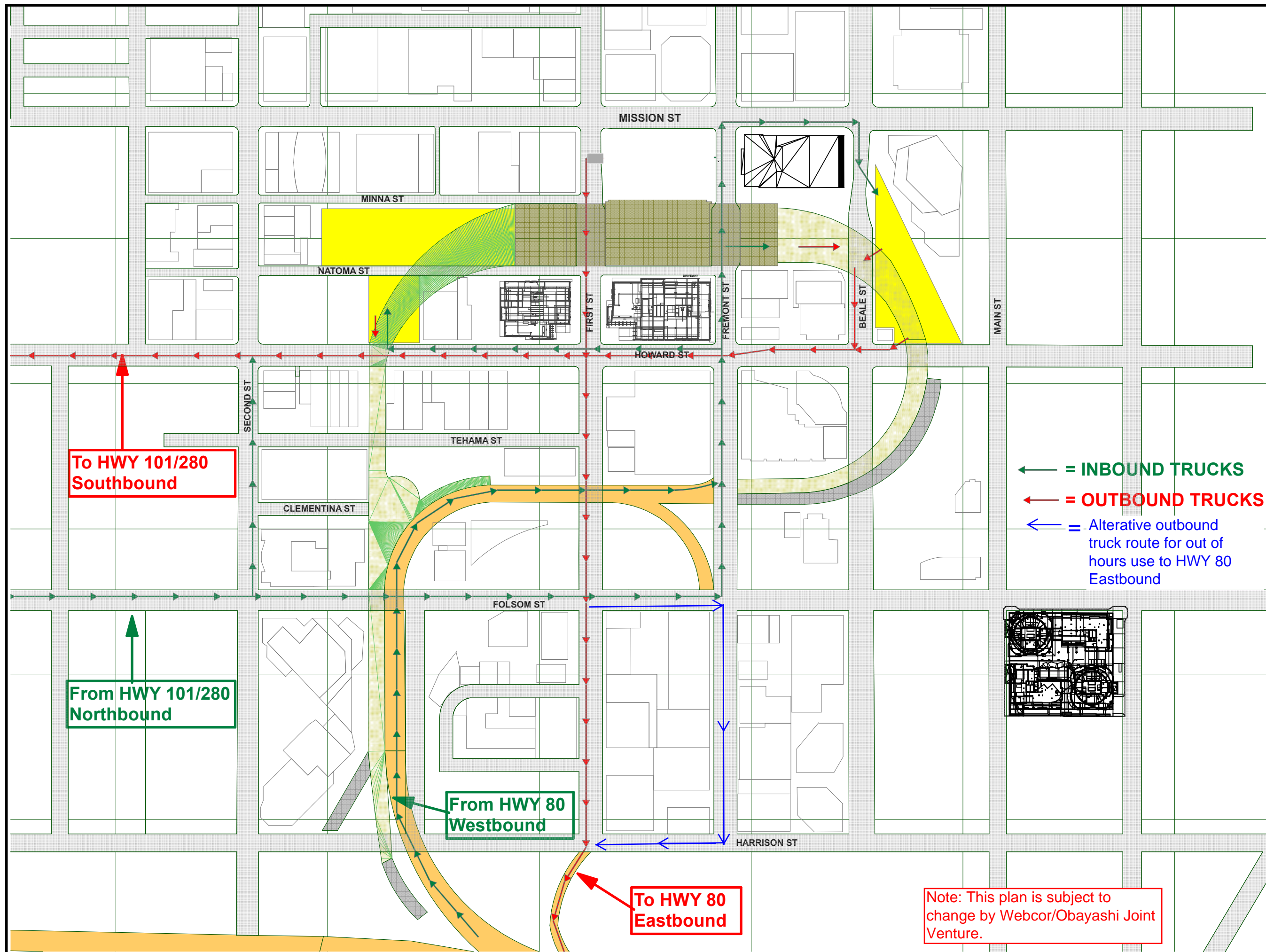
Site Logistics

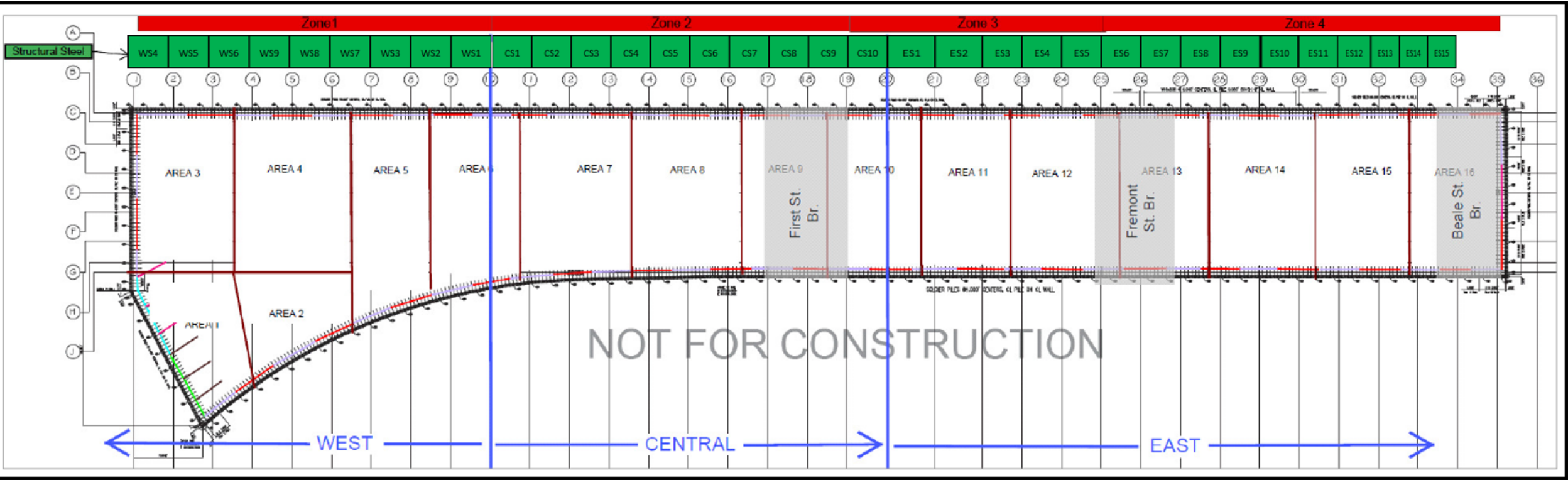
SCALE: N/A

SL-001

SHEET TITLE

SL - 002





NOT FOR CONSTRUCTION

IMPORTANT NOTE:
THESE DRAWINGS ARE NOT INTENDED TO REPLACE
THE DESIGN ARCHITECTURAL AND STRUCTURAL
DRAWINGS. ALL DIMENSIONS, LOCATIONS, AND
ELEVATIONS SHOWN ON THIS DRAWING ARE TO BE
CHECKED ON-SITE AGAINST THE LATEST DESIGN AND
DOCUMENTATIONS.

1751 HARBOR BAY PARKWAY
SUITE 200
ALAMEDA, CA 94502
Phone: (510) 748-1900
Fax: (510) 748-7829

JOB SITE
Address: 175 BEALE ST
SAN FRANCISCO, CA 94105
Phone: 415-978-5700
Fax: 510-748-7830

TRANSBAY TRANSIT CENTER

SAN FRANCISCO, CA

Revision Block

Rev. No.	Description	Date
01	Updated for TGD6 Below Grade Addendum 02	08-22-12
02	Updated for TGD7.1 #B	10-31-12
03	Updated for TGD7.10, TGD7.1C & TGD7.1E	04-05-13
04	Update	5/28/14

Drawn By	DH	Date	08-22-12
Checked By	SR	Date	08-22-12

Job No.: 30100

Construction Zones and Areas

SCALE: N/A

SL-025

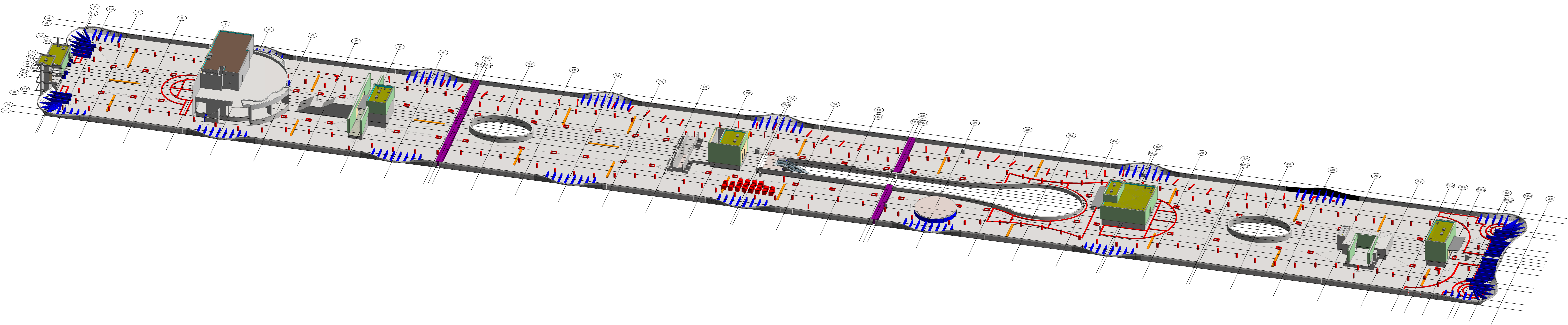
Transbay Transit Center
San Francisco, California

REV	DATE	DESCRIPTION
1	12/5/2013	
2		
3		
4		
5		
6		
7		
8		
9		
10		
11		
12		
13		
14		
15		
16		
17		
18		
19		
20		
21		
22		
23		
24		
25		
26		
27		
28		
29		
30		
31		
32		
33		
34		

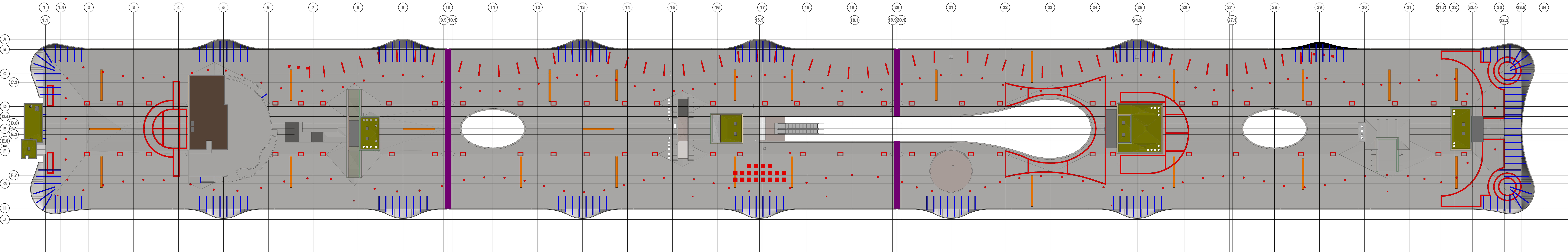
Rooftop
Obstructions
For Reference
Only

SL-027

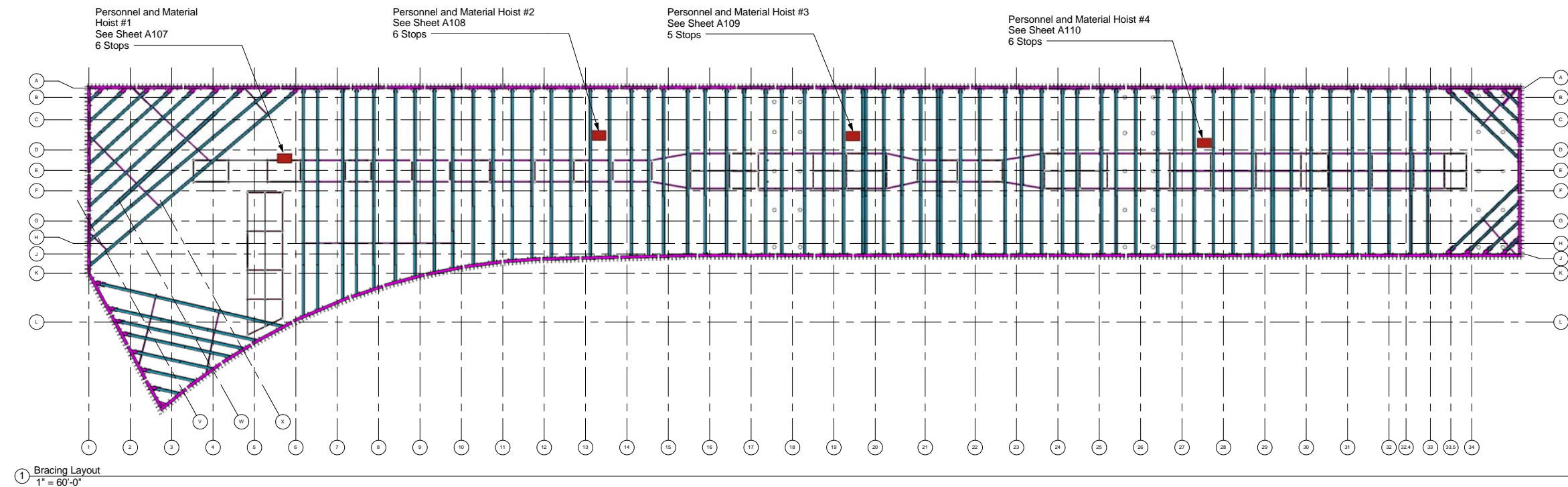
Scale AS SHOWN



2 3D
SCALE: NTS



1 Plan
SCALE: 1" = 20'-0"



NOTE:
The size, quantity, and position of structural elements in based on the 100% Construction Documents dated 05/31/2013.
The size, quantity, and position of internal bracing elements is based on the Internal Bracing and Shoring Wall Drawings dated 09/13/2013.



JOINT VENTURE

175 Beale Street
San Francisco, CA

Transbay Transit Center

San Francisco, CA

R1	12/16/2013	
R2	12/20/2013	
MARK	DATE	DESCRIPTION
PROJECT NO:		X
MODEL FILE:		X
DRAWN BY:		X
CHKD BY:		X
COPYRIGHT		
SHEET TITLE		
Personnel and Material Hoist Layout - Bracing		
A101		
Scale	AS SHOWN	



175 Beale Street
San Francisco, CA

Transbay Transit Center
San Francisco, CA

R1	12/16/2013	
R2	12/20/2013	
MARK	DATE	DESCRIPTION

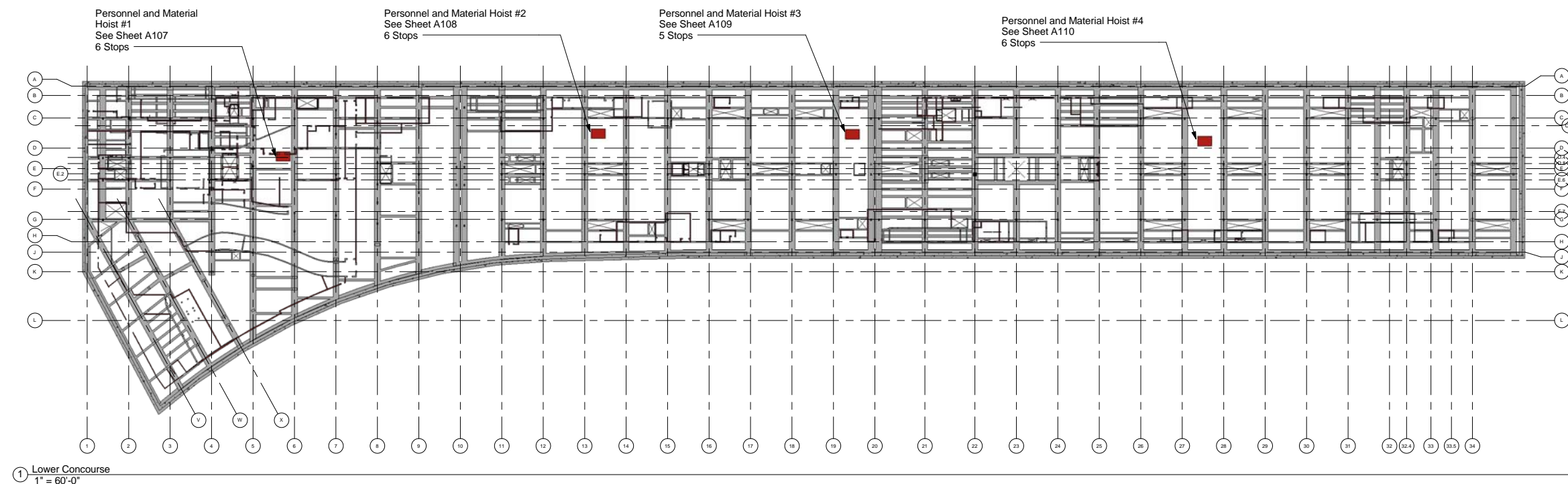
PROJECT NO:	X
MODEL FILE:	X
DRAWN BY:	X
CHKD BY:	X
COPYRIGHT	

SHEET TITLE

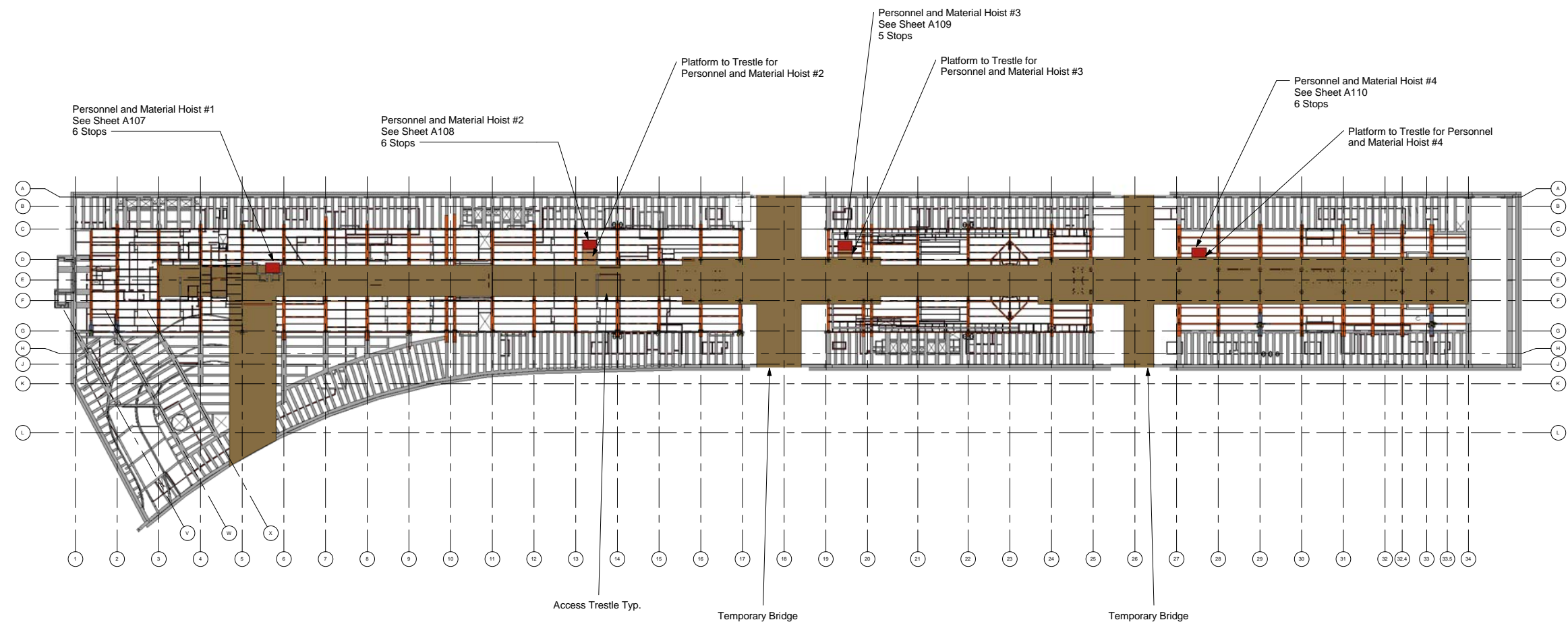
Personnel
and Material
Hoist Layout
- Lower
Concourse

A102

Scale AS SHOWN



NOTE:
The size, quantity, and position of structural elements in based on the 100% Construction Documents dated 05/31/2013.
The size, quantity, and position of internal bracing elements is based on the Internal Bracing and Shoring Wall Drawings dated 09/13/2013.



① Ground Level
1" = 60'-0"

NOTES:

1. Personnel and Material Hoists #2, #3, and #4 platforms to be removed when trestle is removed in surrounding area.
2. Personnel and Material Hoist #1 to be installed after trestle and temporary bracing has been removed.

NOTE:

The size, quantity, and position of structural elements in based on the 100% Construction Documents dated 05/31/2013.
The size, quantity, and position of internal bracing elements is based on the Internal Bracing and Shoring Wall Drawings dated 09/13/2013.



175 Beale Street
San Francisco, CA

Transbay Transit Center
San Francisco, CA

R1	12/16/2013	
R2	12/20/2013	
MARK	DATE	DESCRIPTION

PROJECT NO:	X
MODEL FILE:	X
DRAWN BY:	X
CHKD BY:	X
COPYRIGHT	

SHEET TITLE
**Personnel
and Material
Hoist Layout
- Ground
Level**

A103

Scale AS SHOWN



175 Beale Street
San Francisco, CA

Transbay Transit Center
San Francisco, CA

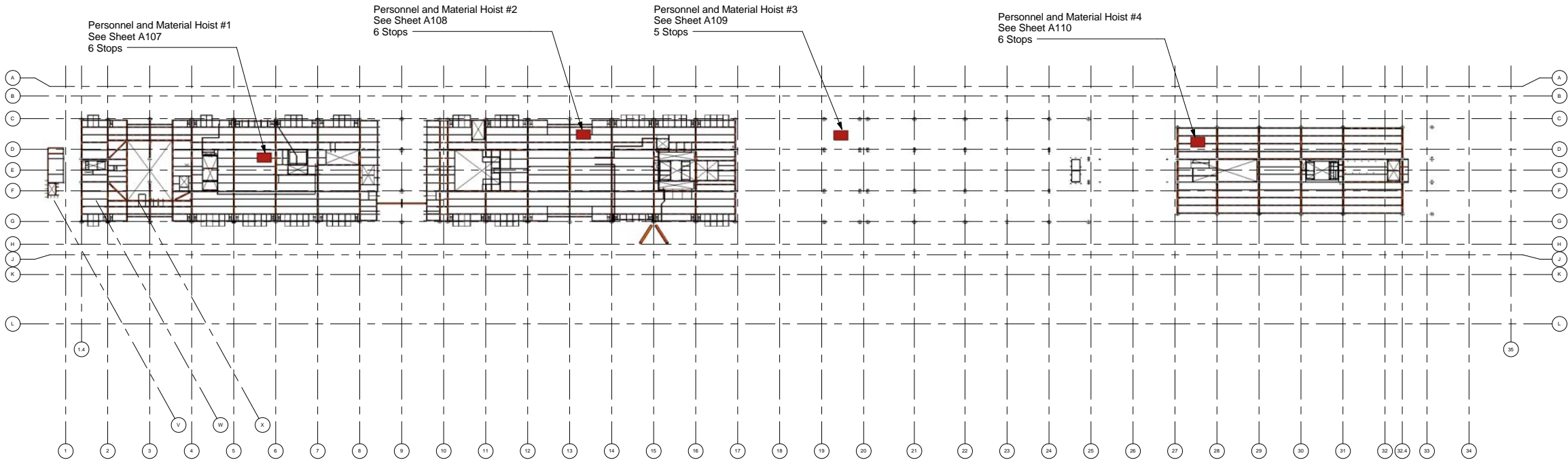
R1	12/16/2013	
R2	12/20/2013	
MARK	DATE	DESCRIPTION

PROJECT NO:	X
MODEL FILE:	X
DRAWN BY:	X
CHKD BY:	X
COPYRIGHT	

PERSONNEL AND MATERIAL HOIST LAYOUT - SECOND LEVEL
--

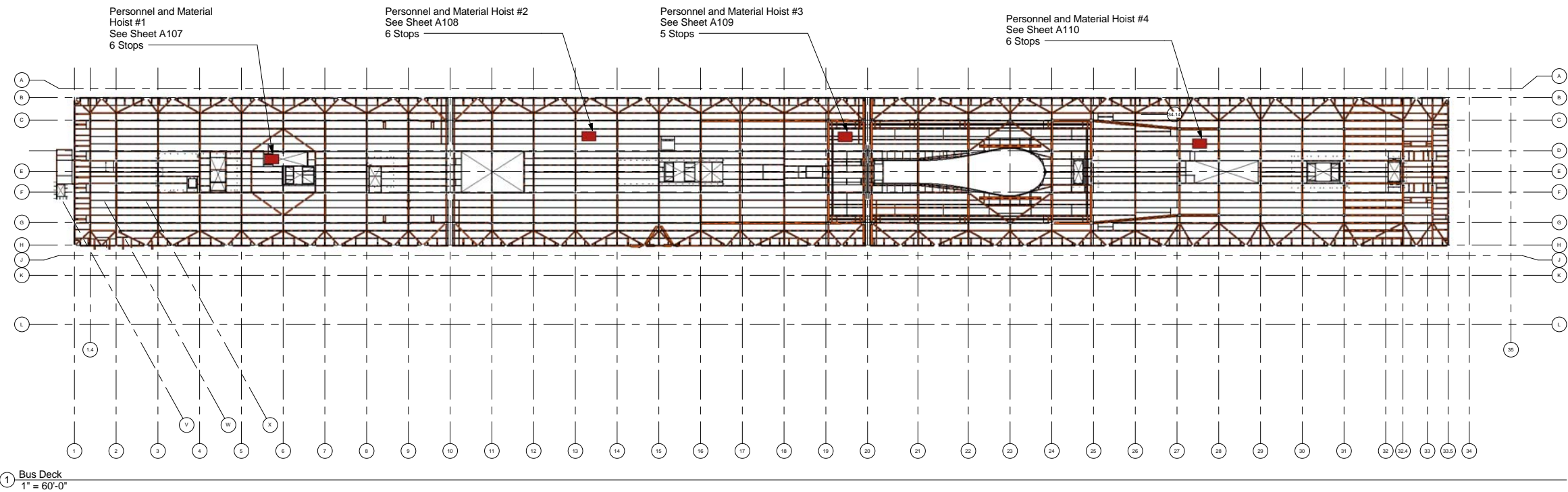
A104

Scale AS SHOWN



① Second Level
1" = 60'-0"

NOTE:
The size, quantity, and position of structural elements in based on the 100% Construction Documents dated 05/31/2013.
The size, quantity, and position of internal bracing elements is based on the Internal Bracing and Shoring Wall Drawings dated 09/13/2013.



NOTE:
The size, quantity, and position of structural elements in based on the 100% Construction Documents dated 05/31/2013.
The size, quantity, and position of internal bracing elements is based on the Internal Bracing and Shoring Wall Drawings dated 09/13/2013.



175 Beale Street
San Francisco, CA

Transbay Transit Center

San Francisco, CA

R1	12/16/2013	
R2	12/20/2013	
MARK	DATE	DESCRIPTION

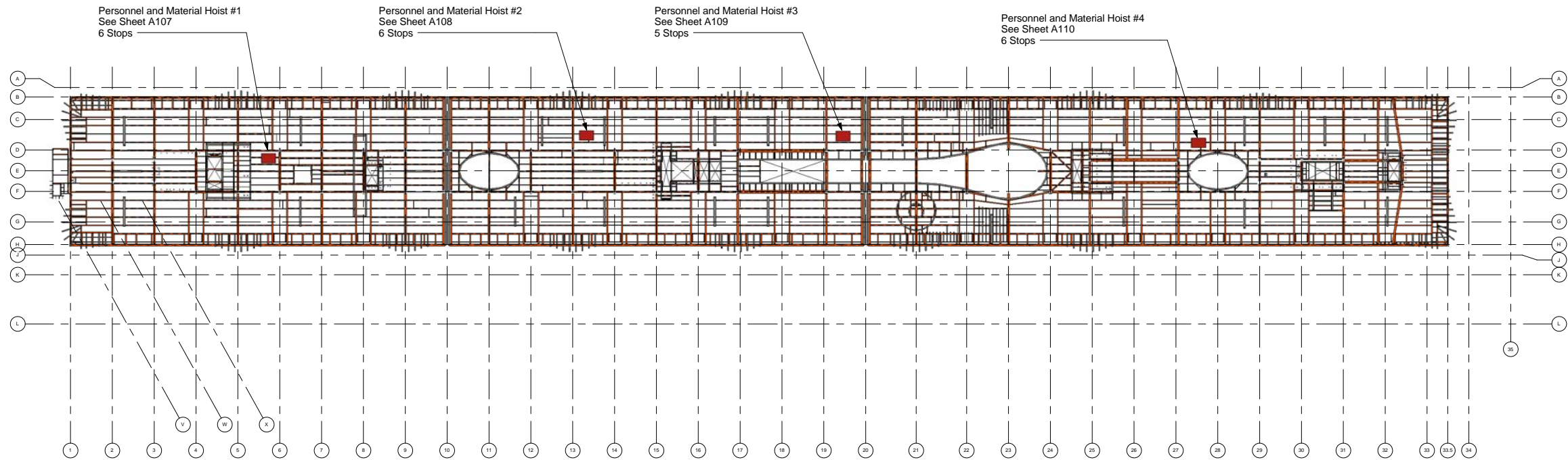
PROJECT NO:	X
MODEL FILE:	X
DRAWN BY:	X
CHKD BY:	X
COPYRIGHT	

SHEET TITLE

Personnel
and Material
Hoist Layout
- Bus Deck
Level

A105

Scale AS SHOWN



① Roof Level
1" = 60'-0"

NOTE:
The size, quantity, and position of structural elements in based on the 100% Construction Documents dated 05/31/2013.
The size, quantity, and position of internal bracing elements is based on the Internal Bracing and Shoring Wall Drawings dated 09/13/2013.



JOINT VENTURE

175 Beale Street
San Francisco, CA

Transbay Transit Center

San Francisco, CA

R1	12/16/2013	
R2	12/20/2013	
MARK	DATE	DESCRIPTION

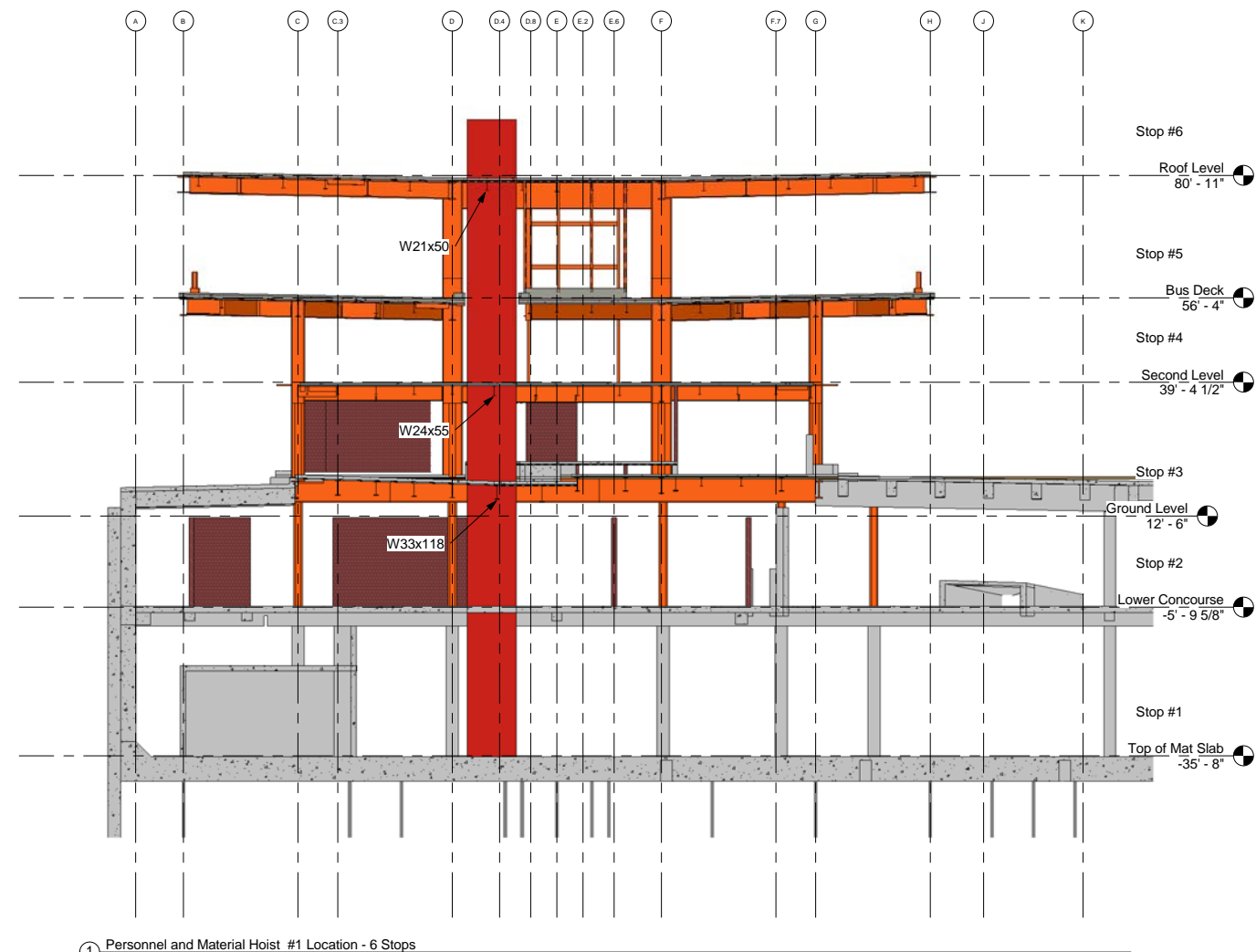
PROJECT NO:	X
MODEL FILE:	X
DRAWN BY:	X
CHKD BY:	X
COPYRIGHT	

SHEET TITLE

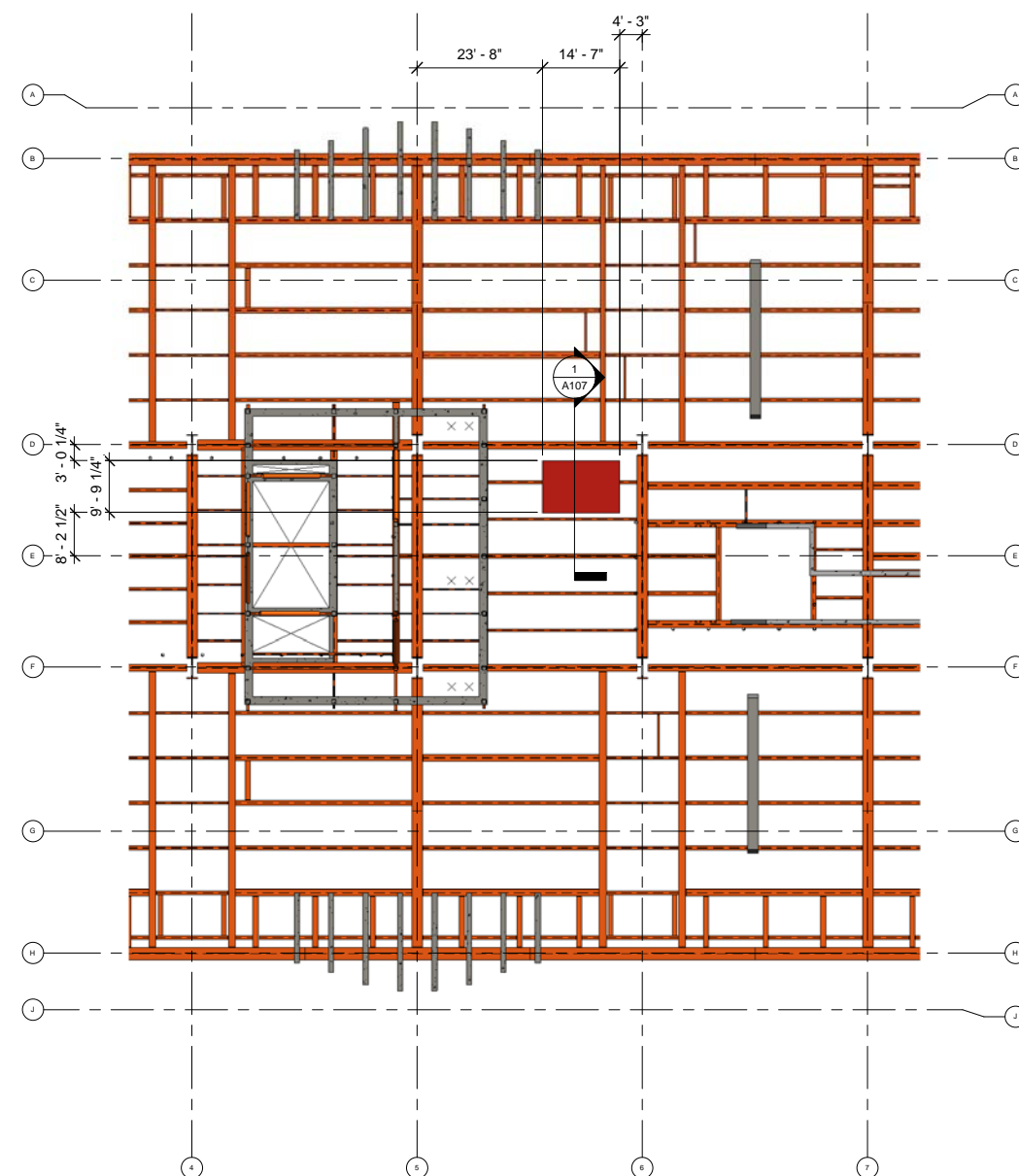
Personnel
and Material
Hoist Layout
- Roof Level

A106

ScaleAS SHOWN



① Personnel and Material Hoist #1 Location - 6 Stops
1/16" = 1'-0"



② Personnel and Material Hoist #1 Detail - Roof Level
1/16" = 1'-0"

NOTE:

The size, quantity, and position of structural elements in based on the 100% Construction Documents dated 05/31/2013.

The size, quantity, and position of internal bracing elements is based on the Internal Bracing and Shoring Wall Drawings dated 09/13/2013.



175 Beale Street
San Francisco, CA

Transbay Transit Center

San Francisco, CA

R1	12/16/2013	
R2	12/20/2013	
MARK	DATE	DESCRIPTION

PROJECT NO:	X
MODEL FILE:	X
DRAWN BY:	X
CHKD BY:	X
COPYRIGHT	

SHEET TITLE
Personnel and Material Hoist #1 Location

A107

Scale	AS SHOWN
-------	----------



175 Beale Street
San Francisco, CA

Transbay Transit Center
San Francisco, CA

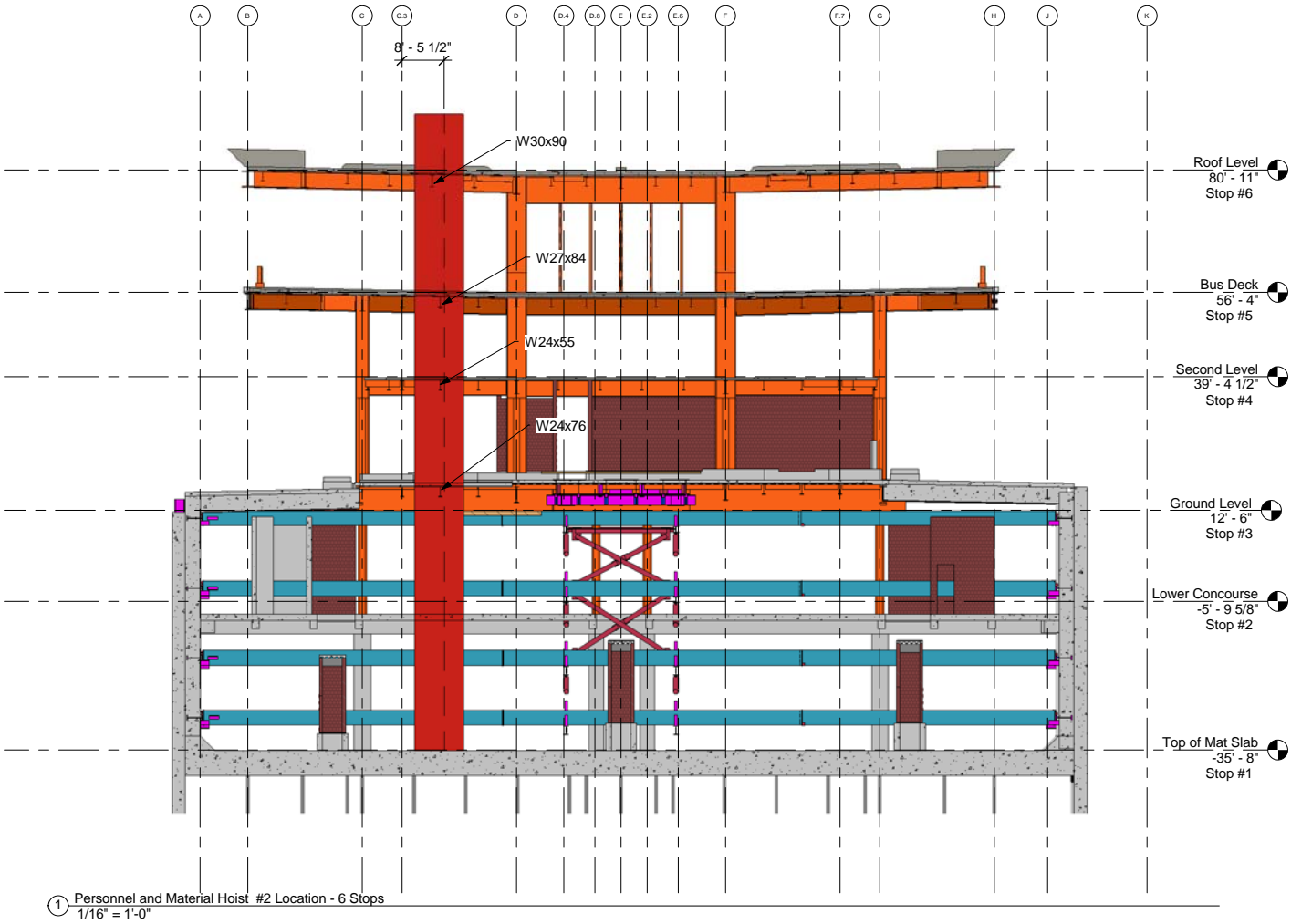
R1	12/16/2013	
R2	12/20/2013	
MARK	DATE	DESCRIPTION

PROJECT NO:	X
MODEL FILE:	X
DRAWN BY:	X
CHKD BY:	X
COPYRIGHT	

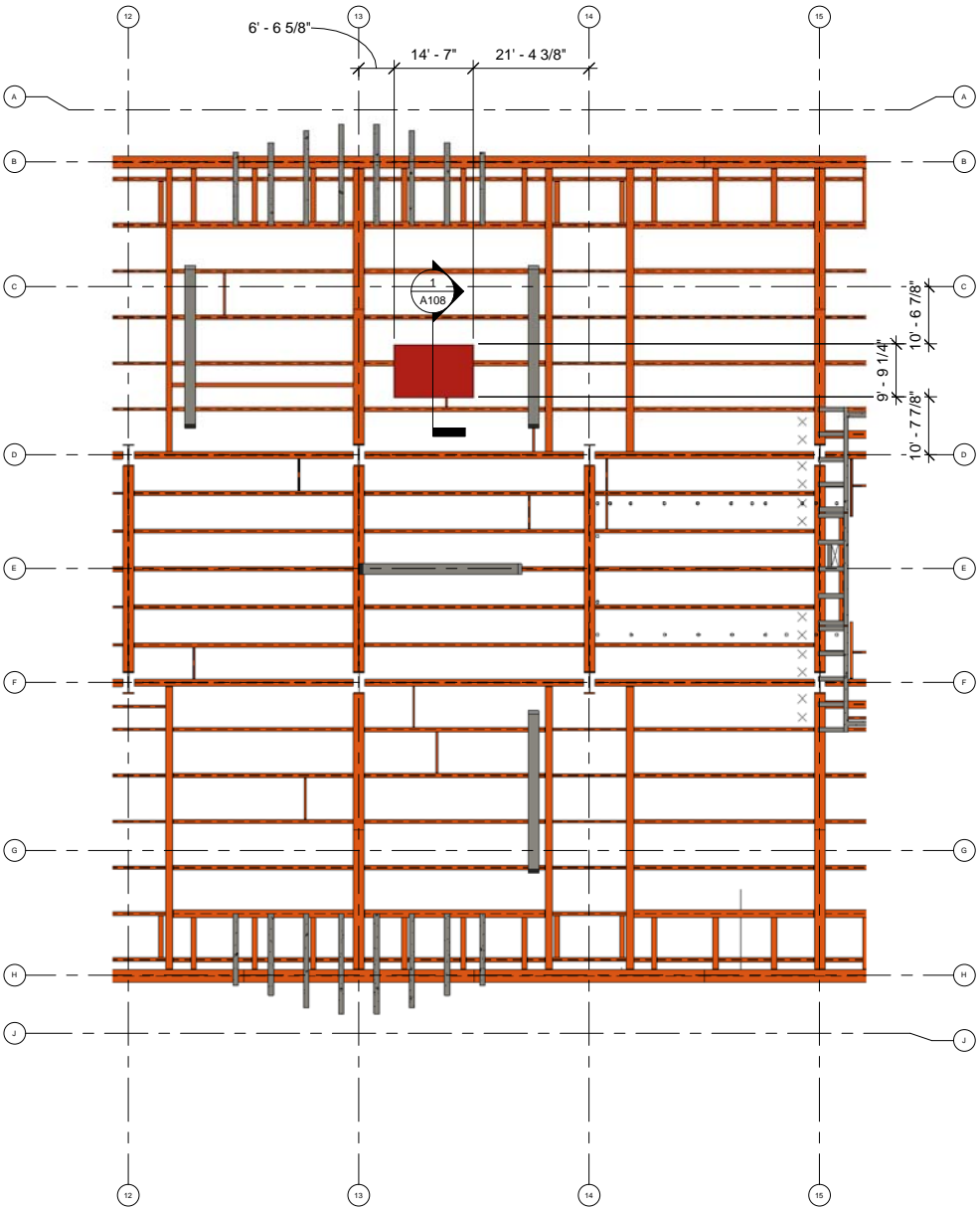
SHEET TITLE
Personnel and Material Hoist #2 Location

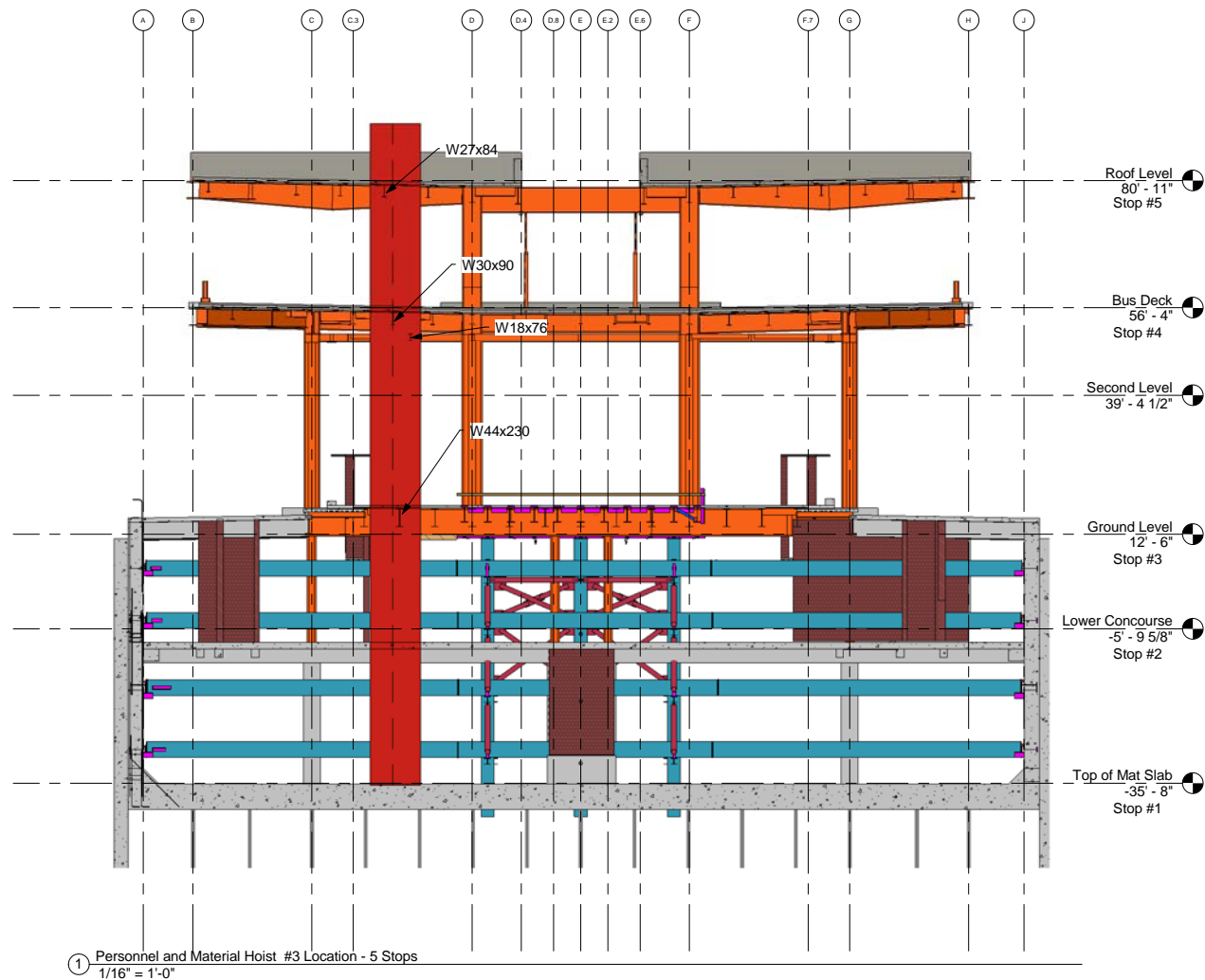
A108

Scale AS SHOWN



NOTE:
The size, quantity, and position of structural elements in based on the 100% Construction Documents dated 05/31/2013.
The size, quantity, and position of internal bracing elements is based on the Internal Bracing and Shoring Wall Drawings dated 09/13/2013.



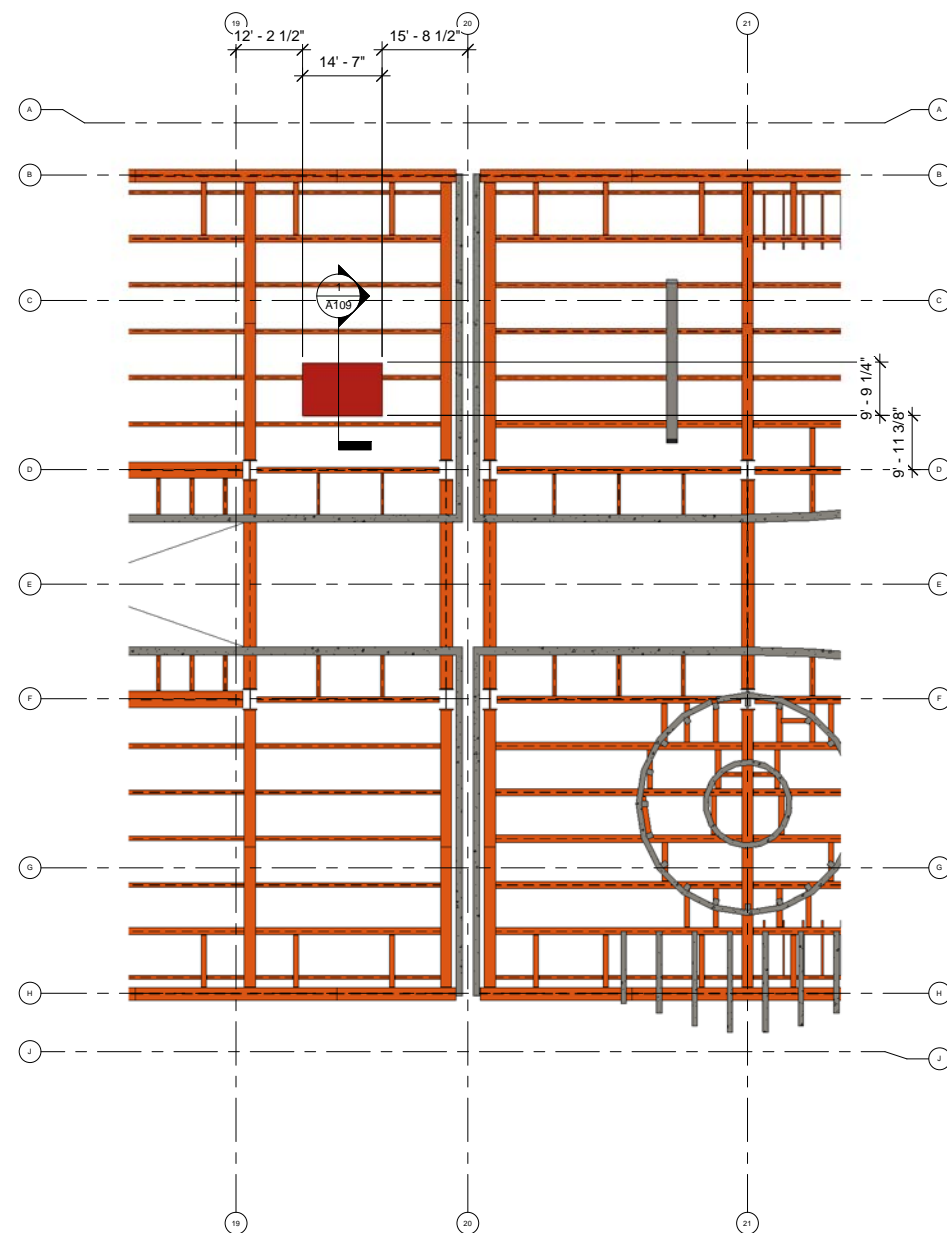


① Personnel and Material Hoist #3 Location - 5 Stops
1/16" = 1'-0"

NOTE:

The size, quantity, and position of structural elements in based on the 100% Construction Documents dated 05/31/2013.

The size, quantity, and position of internal bracing elements is based on the Internal Bracing and Shoring Wall Drawings dated 09/13/2013.



② Personnel and Material Hoist #3 Detail - Roof Level
1/16" = 1'-0"



175 Beale Street
San Francisco, CA

Transbay Transit Center

San Francisco, CA

R1	12/16/2013	
R2	12/20/2013	
MARK	DATE	DESCRIPTION

PROJECT NO:	X
MODEL FILE:	X
DRAWN BY:	X
CHKD BY:	X
COPYRIGHT	

SHEET TITLE

Personnel
and Material
Hoist #3
Location

A109

Scale AS SHOWN



175 Beale Street
San Francisco, CA

Transbay Transit Center
San Francisco, CA

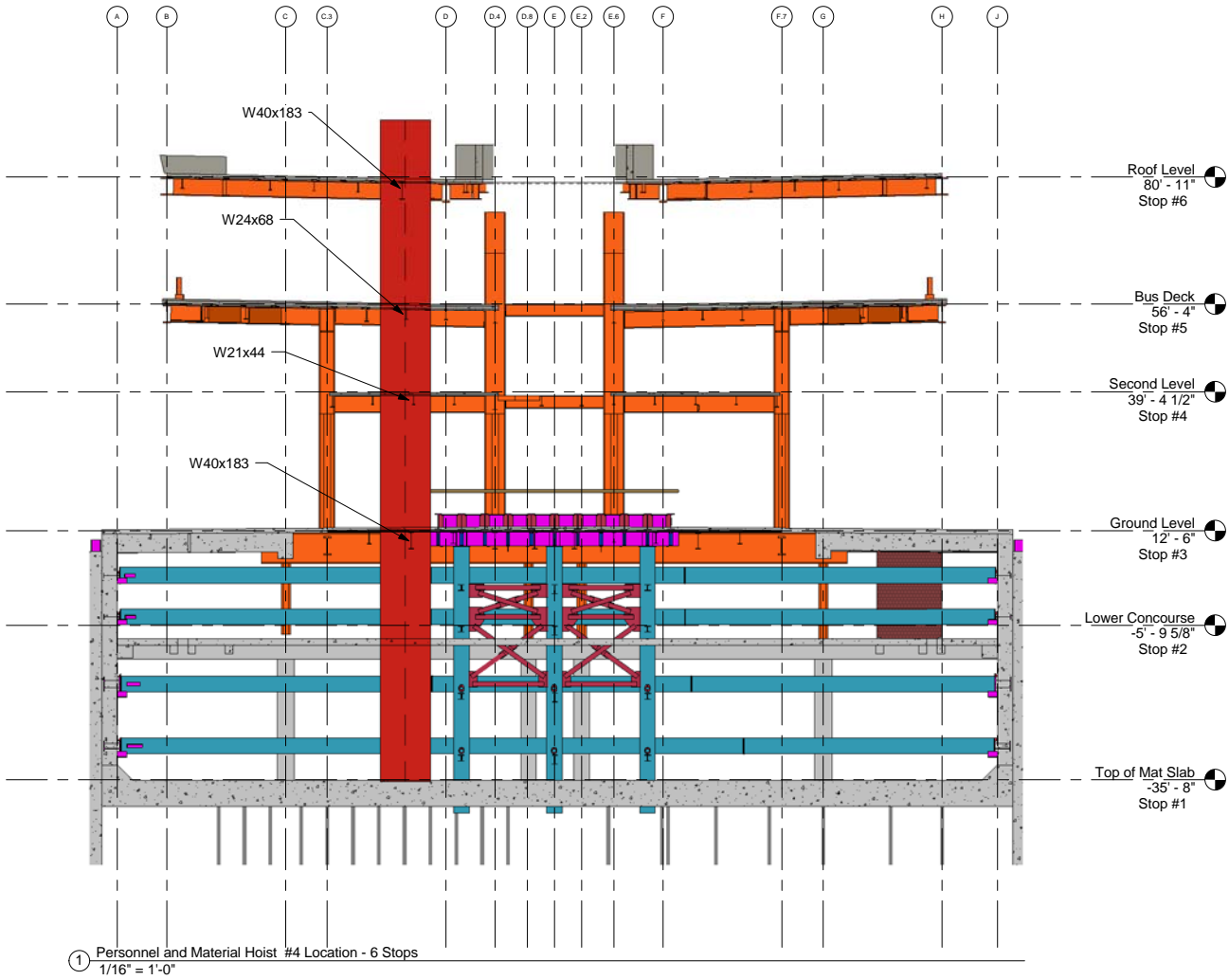
R1	12/16/2013	
R2	12/20/2013	
MARK	DATE	DESCRIPTION

PROJECT NO:	X
MODEL FILE:	X
DRAWN BY:	X
CHKD BY:	X
COPYRIGHT	

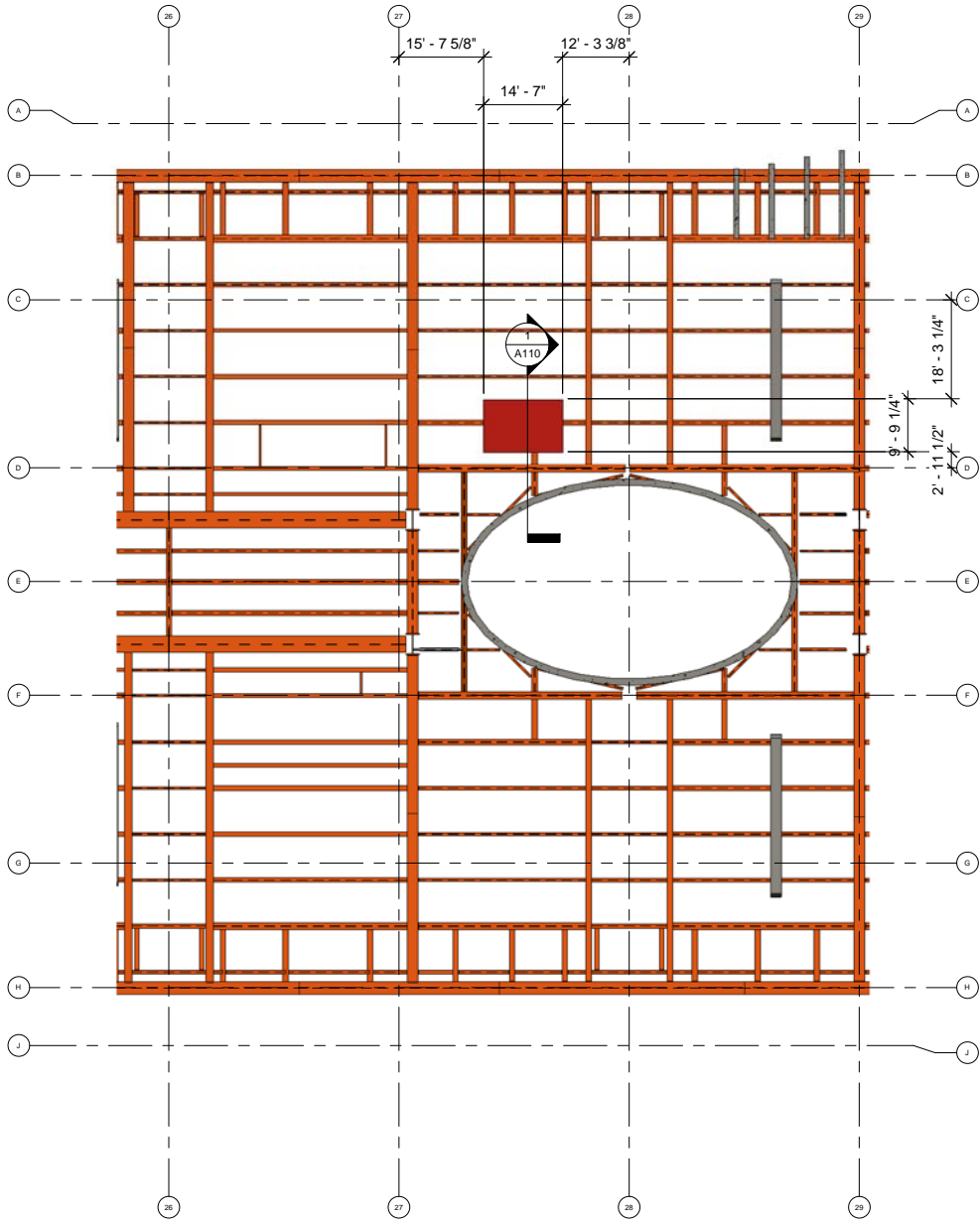
SHEET TITLE
Personnel and Material Hoist #4 Location

A110

Scale AS SHOWN

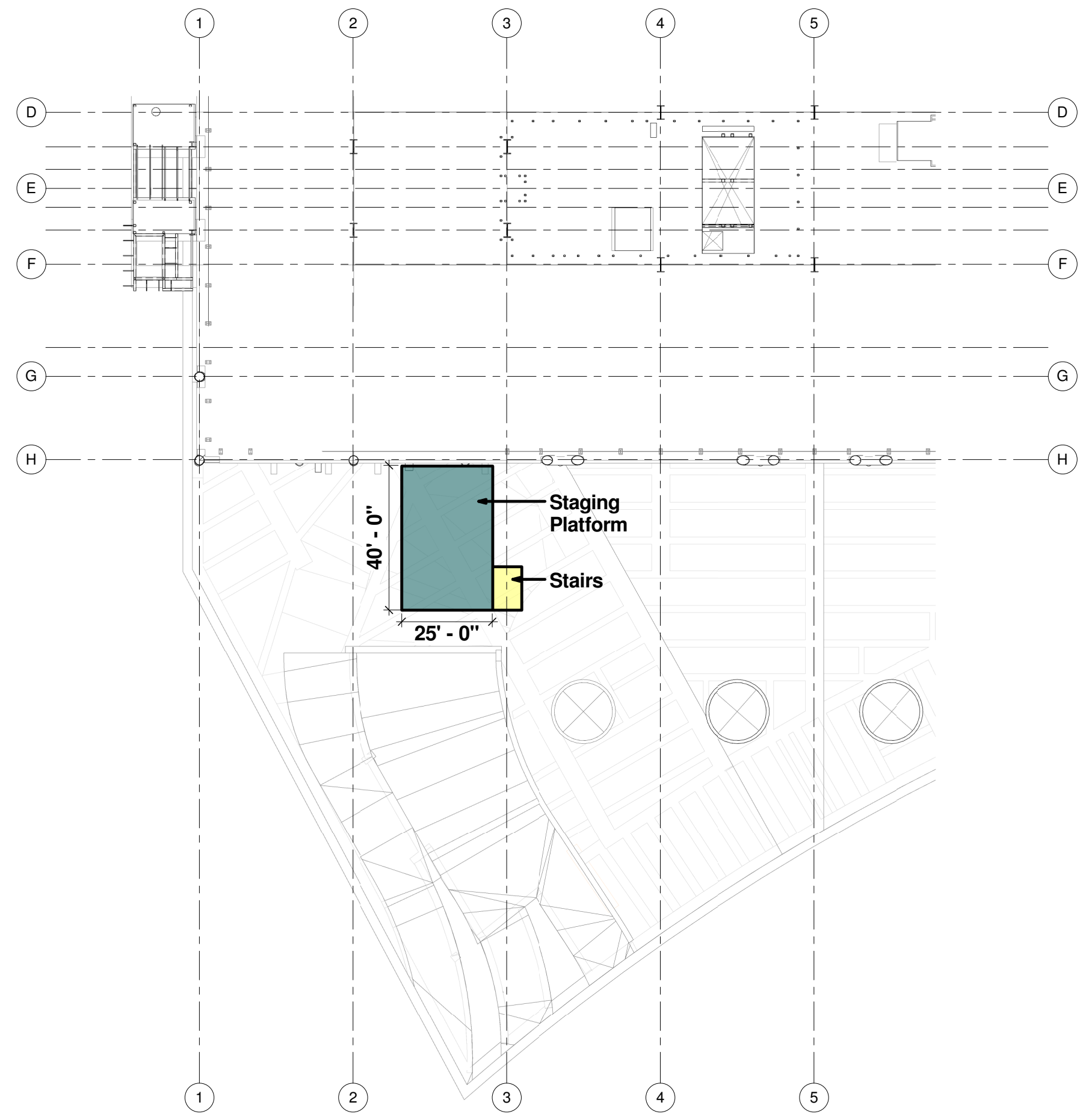


① Personnel and Material Hoist #4 Location - 6 Stops
1/16" = 1'-0"



② Personnel and Material Hoist #4 Detail - Roof Level
1/16" = 1'-0"

NOTE:
The size, quantity, and position of structural elements in based on the 100% Construction Documents dated 05/31/2013.
The size, quantity, and position of internal bracing elements is based on the Internal Bracing and Shoring Wall Drawings dated 09/13/2013.





JOINT VENTURE

207 King Street, Suite 300
San Francisco, California 94107

Transbay Transit Center

San Francisco, California

	02/15/2013	
MARK	DATE	DESCRIPTION

PROJECT NO:	X
MODEL FILE:	X
DRAWN BY:	Matt Zwetzig
CHK'D BY:	X
COPYRIGHT	

SHEET TITLE

Staging Platform

X-08

ScaleAS SHOWN