

---

# EXHIBIT A - Trade Subcontractor Bid Package Manual and Forms – Contract #301000806

---

Trade Package # TG08.6 Metal Ceiling  
Package

**October 9, 2014**

---



## **Table of Contents**

I.	BIDDER QUALIFICATION PROCESS .....	2
II.	KEY DATES FOR BIDDING PROCESS.....	3
III.	COMMUNICATION WITH WEBCOR/OBAYASHI JOINT VENTURE.....	5
IV.	SCOPE OF THE PACKAGE AND BID ITEM INFORMATION .....	6
V.	CONSTRUCTION SCHEDULE.....	12
VI.	INSURANCE AND BONDING REQUIREMENTS .....	13
VII.	CONTRACT DOCUMENT LIST .....	16
VIII.	SUPPLEMENTAL DOCUMENTS LIST .....	20
ATTACHMENT 1	BID FORM AND SCHEDULE OF BID PRICES .....	1-1
ATTACHMENT 2	LOGISTICS .....	2-1

**END OF TABLE OF CONTENTS**

## **I. BIDDER QUALIFICATION PROCESS**

If the Bidder is not previously qualified, the Bidder shall submit a Request for Qualification (RFQ) package no later than the date shown in the TG08.6 Package Timeline in Section II, "Key Dates for Bidding Process." The prequalified trade subcontractors/joint ventures listed below do not need to submit an RFQ package.

### Prequalified Trade Subcontractors/Joint Ventures:

- Cobra BEC, Inc.
- Component West, Inc.
- Crown Corr, Inc.
- Daley's Drywall and Taping

Notification of the qualification will be provided to the Bidder by the date shown in the TG08.6 Package Timeline. Bids submitted by non-qualified Bidders will not be accepted or opened. Non-qualified Bidders assume all risk and costs associated with submitting a bid if they are deemed not qualified.

Trade Subcontractors submitting an RFQ package during the bid period must use the "Request for Qualifications (RFQ) TG08.6: Metal Ceilings" form available on the TJPA website (<http://transbaycenter.org/rfp/metal-ceiling>).

**No Conflict of Interest:** Webcor/Obayashi Joint Venture and the TJPA shall disqualify any Bidder that has a conflict of interest under Section C8.105 of the San Francisco Charter, Government Code Section 1090 *et. seq.*, the Political Reform Act (Government Code Section 87100 *et. seq.*), or any other applicable conflict of interest laws. Any false, incomplete, or otherwise unresponsive statements made in connection with a proposal may be cause for its disqualification at Webcor/Obayashi Joint Venture and the TJPA's sole discretion.

## **END OF BIDDER QUALIFICATION PROCESS**

## II. KEY DATES FOR BIDDING PROCESS

Each Bidder shall submit its “Bid Form,” “Schedule of Bid Prices,” and other applicable sections and forms in the Specifications and the Project Bidding Manual. Required submittal documents for the bid are listed in the Bidding Checklist (BCL) in the Project Bidding Manual.

**Package Issuance:** The Bid Package, except the drawings and specifications, will be available for download from the TJPA website <http://transbaycenter.org/tjpa/doing-business-with-the-tjpa> or by contacting Webcor/Obayashi Joint Venture by e-mail at TransbayBidding\_TG08.6@webcor-obayashi.com. Information regarding how to obtain the drawings and specifications will be posted on the TJPA website with the IFB package on the Bid Package Issuance date.

**Pre-Bid Conference:** A pre-bid conference and job walk for Trade Subcontractors interested in submitting bids will be held at the time and date shown in the TG08.6 Package Timeline below, in Conference Room Charlie at the Webcor/Obayashi Joint Venture Office at 175 Beale Street, San Francisco, California 94105. Attendance is optional, but highly encouraged.

**Questions/Clarifications:** Questions or requests for clarifications regarding the Bid Package must be submitted in writing to Webcor/Obayashi Joint Venture no later than the time on the date shown in the TG08.6 Package Timeline below. Questions on Bid Documents (QBD) form in the Project Bidding Manual shall be used for questions or requests for clarifications. Refer to “Communication with Webcor/Obayashi Joint Venture” for contact information.

**Value Engineering (VE) Proposals:** Each Bidder may submit Value Engineering (VE) Proposals as deductive alternates to their Bid to the TJPA offices at 201 Mission Street, Suite 2100, San Francisco, CA, 94105 by the time and date shown in the TG08.6 Package Timeline below. The VE Proposals shall consist of two parts, technical and cost, and must be submitted in a sealed envelope. No proposals will be accepted after the due date and time. Refer to Specification Section 00 04 20 for details. The VE Proposal submissions must be signed under penalty of perjury in the manner designated at the end of the form, by an individual who has the legal authority to bind the Bidder on whose behalf that person is signing. If any information provided by a Bidder becomes inaccurate, Bidder must immediately notify Webcor/Obayashi Joint Venture and provide updated accurate information in writing, under penalty of perjury.

**Bid Submittal:** Each Bidder shall submit sealed bids to the TJPA offices at 201 Mission Street, Suite 2100, San Francisco, CA, 94105 by the time and date shown in the TG08.6 Package Timeline below. No bids will be accepted after the due date and time. Bid submissions must be signed under penalty of perjury in the manner designated at the end of the form, by an individual who has the legal authority to bind Bidder on whose behalf that person is signing. If any information provided by a Bidder becomes inaccurate, Bidder must immediately notify Webcor/Obayashi Joint Venture and provide updated accurate information in writing, under penalty of perjury.

**Sensitive Security Information/Protected Critical Infrastructure Information:** Contract Documents and reference documents for the Transbay Transit Center Project may contain protected information pertaining to sensitive, financial, commercial, or proprietary business information and/or the security of the Project. Such protected information is classified as Confidential Information, Sensitive Security Information (SSI), or Protected Critical Infrastructure Information (PCII). Bidders and Trade Subcontractors shall follow the procedures for the safeguarding of protected information specified in Specification Section 01 35 70, Document Control Procedure for Protected Information.



If it is necessary to discuss Confidential Information, SSI or PCII during the Pre-Bid Conference for this Trade Package, all attendees will be required to have been granted conditional access to the associated documents. In order to be granted conditional access, all attendees must have submitted a signed Non-Disclosure Agreement (NDA) to the TJPA, and been approved prior to the Pre-Bid Conference.

**Financial Responsibility:** Webcor/Obayashi Joint Venture and the TJPA accept no financial responsibility for any costs incurred by a firm in responding to this Bid Package. Submissions to Webcor/Obayashi Joint Venture will become the property of the TJPA and may be used by the TJPA in any way deemed appropriate.

**No Waiver:** No waiver by Webcor/Obayashi Joint Venture and the TJPA of any provision of this Bid Package shall be implied from any failure by Webcor/Obayashi Joint Venture and the TJPA to recognize or take action on account of any failure by a Bidder to observe any provision of this Bid Package.

**No Representations or Warranties:** The information presented in this Bid Package and in any report or other information provided by Webcor/Obayashi Joint Venture and the TJPA to Bidders is provided solely for their convenience. It is the sole responsibility of Bidders to assure themselves that the information contained in this Bid Package and other documents are accurate and complete. No representations, assurances or warranties pertaining to the accuracy of such information are or will be provided by the TJPA or its advisors.

**Package Timeline:**

Bid Package Issued:	October 9, 2014
Pre-Bid Conference:	October 29, 2014 (2:00 p.m.)
Qualifications Due (for non-prequalified):	November 10, 2014 (2:00 p.m.)
Notification of Qualification (for non-prequalified):	November 17, 2014
Questions/Clarifications (QBD) Due:	December 30, 2014 (2:00 p.m.)
Pre-bid Request for Substitution Due:	December 30, 2014 (2:00 p.m.)
Value Engineering (VE) Proposals Due:	January 6, 2015 (2:00 p.m.)
VE Proposals Review:	January 6 – 19, 2015
Bids Due:	January 20, 2015 (2:00 p.m.)
Public Bid Opening:	January 20, 2015 (2:00 p.m.)
Protest Period:	January 20, 2015 (2:00 p.m.) – January 27, 2015 (2:00 p.m.)
Notification of Intention to Award Contract:	January 28, 2015
TJPA Board Vote to Approve the Contract Award:	February 12, 2015

**END OF KEY DATES FOR BIDDING PROCESS**

### **III. COMMUNICATION WITH WEBCOR/OBAYASHI JOINT VENTURE**

At no time during the bid process (defined as the time between issuance of this IFB until issuance of the Notice of Intent to Award Contract) shall Bidders contact any person(s) or staff of the TJPA, TJPA Program Management/Program Controls (PMPC) team, Webcor/Obayashi Joint Venture, CM Oversight (CMO), or other TJPA Consultants regarding this IFB. The only contact is for submission of questions using the contact directions below.

Submit questions using the Question on Bid Documents (QBD) form through Webcor/Obayashi Joint Venture. See the Project Bidding Manual for QBD form.

E-mail the completed QBD form to Webcor/Obayashi Joint Venture at  
TransbayBidding\_TG08.6@webcor-obayashi.com.

### **END OF COMMUNICATION WITH WEBCOR/OBAYASHI JOINT VENTURE**

#### **IV. SCOPE OF THE PACKAGE AND BID ITEM INFORMATION**

##### **TG08.6 Metal Ceiling:**

##### **1. Package Scope Summary**

The scope of work for the TG08.6 Metal Ceiling is described in the Contract Documents. Scope of work includes all Design-Build Services, labor, materials, equipment, tools, transportation, disposal fees, incidentals and any other costs/fees necessary to complete the work in accordance with the Contract Documents. All necessary work from mobilization to handover to the next Trade Subcontractor shall be included in the Bid.

The major items of work for this Trade Package will consist of the following elements:

- W-14 - Aluminum Ceilings

The Estimated Value of this Trade Package is approximately \$30 million.

Trade Subcontractor is required to review the Contract Documents and be familiar with existing Site Conditions in accordance with all requirements set forth in the Prime Contract with respect to its scope of work (see Specification Section 00 07 00 – General Conditions, Article 3.03). This shall include, without limitation, the obligation to carefully review the appropriate portions of the Contract Documents a minimum of 35 days in advance of the work to be executed for the express purpose of checking for any manifest errors, omissions, discrepancies or ambiguities and notifying Webcor/Obayashi Joint Venture in writing promptly within this time period upon discovery of errors, omissions, discrepancies or ambiguities so that Webcor/Obayashi Joint Venture can properly notify the TJPA within the time period prescribed in Specification Section 00 07 00 – General Conditions, Article 3.03.C.

In addition, if Trade Subcontractor performs work that it knows, or reasonably should have known, to be contrary to the Building Code or other applicable laws, statutes, ordinances, rules and regulations without written notice to Webcor/Obayashi Joint Venture, Trade Subcontractor shall assume responsibility for such work and shall bear all costs of correction (see Specification Section 00 07 00 – General Conditions, Article 3.08.E).

## 2. General Work

All necessary general work shall be included in this package. As needed by Trade Subcontractor, the general work shall include, but shall not be limited to, site preparation, site safety, crane/rescue baskets, temporary lighting for night work, temporary task lighting for traffic/pedestrians, painted temporary barricades for overhead protection including lighting and signage, weather mitigation, surveying, clean-up, dump permits and fees, and small tools and equipment specific for this work package. Refer to Section IV, "Trade Subcontractor Requirements" in the Project Bidding Manual and the Contract Documents for more information.

This Trade Subcontractor is responsible for protection of adjacent properties, mitigation measures and monitoring, as specified in the Contract Documents.

This Trade Subcontractor's cost of the general work, overhead, office cost, applicable permits/legal fees, administration, bid bonds, insurances, contingency, profit and other necessary activities for this project shall be included in the bid amount and shall be distributed into the Bid Items.

The following items for this package are discussed in detail in the Project Bidding Manual. Additional requirements and/or clarifications that are specific to the current Trade Package are included below and align, as indicated, with the corresponding section of the Project Bidding Manual.

### III. Instructions to Bidders

#### E. Additional Bidding Notes

##### 2. Exclusions/Clarifications/Qualifications

###### a) Do not include in Bid Price:

1. Project ID Signs called for in Specification Section 01 15 01.
2. Inspector's Office called for in Specification Section 01 15 90, Subsection 1.3.

### IV. Trade Subcontractor Requirements

#### A. General Information – Supplemental Instructions

##### 7. Inspections and Testing

- g) Furnish all third party testing, review and inspection for this scope of work not explicitly called out to be paid for by the owner anchor inspections.

##### 25. Cranes/Hoisting

- b) Rooftop Cranes will not be available until approximately the third quarter of 2015 through the second quarter of 2017. Rooftop crane usage for all activities, including but not limited to, unloading deliveries, loading materials and equipment into the building, use in erection or placement of work shall be scheduled in coordination with Webcor/Obayashi Joint Venture. Crane time is not guaranteed until it is scheduled. All work performed outside of rooftop crane availability is the responsibility of the Trade Subcontractor.

#### 34. Submittals

This Trade Subcontractor shall be required to attend two additional Submittal preparation and review meetings. The intent of these meetings is for the TJPA design team to provide additional assistance to the Trade Subcontractor at the beginning of this bid package's submittal development. This instruction does not relieve the selected Trade Subcontractor from full compliance with the requirements of the Contract Documents.

##### First preliminary meeting – Pre-Preparatory # 1:

This meeting will be scheduled after Notice of Award is issued and after Trade Subcontractor has started the submittal development. The purpose of this meeting is to review the design, design criteria, performance requirements, submittal schedules, applicable codes and ordinances at the time of award, and the requirements of the Authorities Having Jurisdiction (AHJ). Agenda checklist will be published within 72 hours of the meeting.

- a. Meeting shall be attended by the following (at all stages):
  - i. Owner Representatives
  - ii. Architect representatives – Pelli Clarke Pelli Architects (PCPA)/Adamson Associates, Inc. (AAI)
  - iii. Structural, Mechanical, Plumbing, Electrical and Fire Protection Engineers (if applicable)
  - iv. Trade Subcontractor's Project Manager and Engineer of Record (if applicable)
  - v. Webcor/Obayashi Joint Venture Representatives
- b. Minutes shall be published by Webcor/Obayashi Joint Venture's QC Manager and issued to the team within 48 hours.

##### Second preliminary meeting – Pre-Preparatory # 2:

This meeting will be scheduled at 95% progress of the submittal for this trade package. The purpose is to allow the Trade Subcontractor and its Engineer of Record to present the submission and demonstrate they have complied with the contract requirements prior to final submission to TJPA for review and action.

- a. Meeting shall be attended by the following (at all stages):
  - i. Owner Representatives
  - ii. Architect representatives - PCPA/AAI
  - iii. Structural, Mechanical, Plumbing, Electrical and Fire Protection Engineers (if applicable)
  - iv. Trade Subcontractor's Project Manager and Engineer of Record (if applicable)
  - v. Webcor/Obayashi Joint Venture Representatives
- b. Minutes shall be published by Webcor/Obayashi Joint Venture's QC Manager and issued to the team within 48 hours.

#### **D. Small Business Enterprise (SBE) Program**

The SBE utilization goal for this Trade Subcontractor is 10% of the total value of this Trade Subcontractor's bid value.

### **3. Base Bid Item Scope**

#### **Metal Ceiling Package Scope of Work**

This section is supplemental information only to the Contract Documents used to describe how the bid pricing is to be broken down and to generally describe the scope of the work defined in the Contract Documents. All necessary work from mobilization to handover to the next Trade Subcontractor shall be included in the bid items.

The amount paid for all of the items below shall include full compensation for furnishing all labor, materials, equipment, installation, welding, tools, transportation, disposal fees, incidentals, all patch work including multiple mobilization/demobilizations as required, and any other costs/fees necessary to complete this work.

#### **Metal Ceiling Primary Specifications**

09 51 23 - Aluminum Ceilings (W-14)

#### **Metal Ceiling Detailed Scope of Work**

1. Design, furnish and install all Design-Build W-14 Aluminum Ceilings including all associated materials and work for a complete system per the Contract Documents and manufacturer's requirements.
2. For the purposes of developing the lump sum dollar amount for design-build services the selected Trade Subcontractor, under contract to Webcor/Obayashi Joint Venture, will be the Engineer of Record and shall produce shop drawings for complete W-14 system that meets the performance requirements and design criteria/intent of the Contract Documents. Trade Subcontractor's Work shall include all design services that are consistent with all applicable federal, state and municipal laws, statutes, codes, rules, regulations and state licensing laws, including all professional architectural, engineering or other design professional services, and provide the necessary coordination and preparation of complete shop drawings designed, engineered, and stamped by a registered structural engineer licensed to practice the appropriate field of engineering in the State of California.
3. The selected Trade Subcontractor, as the W-14 system Engineer of Record, will coordinate the W-14 system, working closely with Webcor/Obayashi Joint Venture and other trade subcontractors to ensure that the W-14 system, and its connection to the existing building structure, is compatible and constructible relative to adjacent building elements. The selected Trade Subcontractor shall work closely with the TG07.1R Structural Steel Superstructure Trade Subcontractor, the TG07.8 Expansion Joints Trade Subcontractor, the TG08.4 Metal Panels Trade Subcontractor, the TG08.9 Roll-up Doors and Grilles Trade Subcontractor, the TG08.10 Glass Curtain Walls Trade Subcontractor, the MEPF Trade Subcontractors (TG10.2 Plumbing Trade Subcontractor, TG10.3 HVAC Trade Subcontractor, the TG10.4 Electrical, Communications, Security, and Integrated Networks Trade Subcontractor, the TG10.5 Fire Protection and Suppression Trade Subcontractor), the TG12.2 OCS Upgrade Trade Subcontractor, and the TG17.1 Signage/Graphics/Directory Systems Trade Subcontractor during the Final Engineering and Shop Drawing Phase.
4. The selected Trade Subcontractor will participate in coordination meetings throughout the Final Engineering and Shop Drawing Phase leading up to the approval of shop drawings.

5. Within the guidance of the Contract Documents, the selected Trade Subcontractor may use a proprietary system that meets the design intent for the W-14 system without altering load paths to the superstructure.
6. The cost to incorporate any necessary revision to the superstructure shall be part of the W-14 system scope of work if alternate structural connections are proposed in locations where the connections to the superstructure have been previously designed.
7. Design, furnish and install all secondary supports including, but not limited to, struts, tube steel, beams, base plates, support angles, angle brackets, and kickers for this scope of work.
8. Design, furnish and install all supports, enclosures, openings, light diffusers and recesses for lighting fixtures, exit signs and electrical devices integral with the W-14 system. Coordinate with the MEPF Trade Subcontractors for all routing and pipe/conduit placement.
9. Design, furnish and install all complete access cover assemblies per Contract Documents.
10. Provide surface preparation and touch-up to shop primed or finished paint at connections to structural steel.
11. Responsible for reimbursing the TG16.8 Fireproofing Trade Subcontractor to repair all in place fire resistant materials disturbed or removed as a part of the TG08.6 Metal Ceiling scope of work, per Contract Documents and to the satisfaction of the testing agency inspection.
12. Provide all sealant joints, backer rods and backing plates included in this trade package at all adjacent finishes and systems.
13. Provide all scanning required for this scope of work (see S-0008 Note PA-1 and PA-3 for examples of where this will apply).
14. Coordinate with non-custom light fixtures at the Bus Deck Ceiling. The Alternate Price for non-custom light fixtures (Alternate No. 09, Article E.1.2 of Specification Section 01 10 30/APE) is the base bid for this trade package in lieu of the Tubular Daylighting Devices (TDD).
15. Design, furnish and install framed and finished openings for overhead doors and grilles per the Contract Documents and coordinated with the TG08.9 Roll-up Door Trade Subcontractor and the "W" system Trade Subcontractors providing structural support to the TG08.9 Roll-up Doors and Grilles Trade Subcontractor (TG08.10 Glass Curtain Wall and TG08.4 Metal Panels).
16. Design, furnish and install all supports and enclosures at Overhead Grilles 03260G and 03260H including, but not limited to, ceiling recess, housing enclosure, struts, kickers and structural steel. Coordinate Overhead Coiling Grille mounting hardware and support requirements with the TG08.9 Roll-Up Doors and Grilles Trade Subcontractor. Overhead Coiling Doors and Grilles to be provided by others.
17. Furnish and install complete seismic cover including, but not limited to, aluminum ceiling panel at seismic joint, gaskets, expansion joint assembly, aircraft cable anchored to structure and coordination with the TG07.8 Expansion Joints Trade Subcontractor.
18. Provide all penetrations, openings and support framing for devices including, but not limited to, smoke detectors, sensors, speakers, display boards, signage, sprinklers, security cameras, exit sign, strobe lights and lights fixtures. All penetrations to be created in the factory unless a field penetration is approved in advance by Webcor/Obayashi Joint Venture. Penetrations to be coordinated with the MEPF Trade Subcontractors.
19. Field modifications of panels are not permitted unless approved in advance by Webcor/Obayashi Joint Venture.
20. Coordinate with the TG12.2 OCS Upgrade Trade Subcontractor and provide all openings, penetrations, angles, fasteners and flashing where the metal ceiling connects to the OCS assembly and around the OCS system supports.
21. Design, furnish and install all fan assemblies, including, but not limited to aluminum sloped reveal, vertical panel supports, light diffuser panel and coordination with the TG10.3 HVAC Trade Subcontractor and the TG10.4 Electrical, Communications, Security, and Integrated Networks Trade Subcontractor.

22. Design, furnish and install all light cove assemblies including, but not limited to stainless steel pressure plates, glass lenses, aluminum enclosure and coordination with the TG10.4 Electrical, Communications, Security, and Integrated Networks Trade Subcontractor.
23. Design, furnish and install all complete aluminum horizontal and diagonal soffits and closure panels between aluminum ceilings and adjacent walls, glazing systems, metal panel systems, column covers, roll-up doors and grilles, and the structural steel superstructure. Include all support structure, angles, bracing, sealant, and reveals necessary for a complete soffit or closure.
24. Provide all traffic control, sidewalk and street coordination per the contract documents, governmental agencies and Webcor/Obayashi Joint Venture necessary to complete the W-14 Metal Panel Ceilings. Traffic control, sidewalk and street coordination will need to be coordinated with high reach equipment or platforms necessary to complete the W-14 Metal Panel Ceiling work above First and Fremont Streets.
25. The project will provide a rooftop rail mounted crane with operator for material hoisting and installation (available approximately in the third quarter of 2015). Use of the crane must be scheduled with Webcor/Obayashi Joint Venture in advance of required use. This hoisting excludes rigging and distribution or spreading of materials once landed on the floor or roof. If cranes are used in the street instead of on the roof, include all costs associated for lane and street closures. Account for neighborhood disruption, allowable lane/street closure time periods and moratorium blackout periods for the City of San Francisco.

**END OF SCOPE OF THE PACKAGE AND BID ITEM INFORMATION**



**V. CONSTRUCTION SCHEDULE**

Refer to Project Bidding Manual Rev. 26, Section IV.C for Construction Schedule.

**END OF CONSTRUCTION SCHEDULE**

## **VI. INSURANCE AND BONDING REQUIREMENTS**

The insurance requirements outlined below supersede the related requirements in Specification Section 00 08 05 and Section 16 of the Long Form Subcontract.

### **1. TRADE SUBCONTRACTOR'S LIABILITY INSURANCE**

Trade Subcontractor shall maintain in full force and effect, for the period covered by the subcontract, the following liability insurance with the following minimum specified coverage or coverage as required by laws and regulations, whichever is greater:

- A. Workers' Compensation in the statutory amount, including Employers' Liability coverage with limits not less than \$1,000,000 each accident, injury, or illness, and coverage for Federal Employers Liability Act.
- B. Commercial General Liability insurance with limits not less than \$15,000,000 each occurrence combined single limit for bodily injury and property damage, including coverage for Contractual Liability, Independent Contractors, Explosion, Collapse, and Underground (XCU), Personal Injury, Broadform Property Damages, and completed operations. The required limit may be satisfied through a combination of primary commercial general liability and excess liability policies. Notwithstanding Section 16.7 of the Long Form Subcontract, the requirement to maintain \$15,000,000 in Commercial General Liability Insurance shall apply ONLY to Trade Subcontractor. Trade Subcontractor's subcontractors and/or lower-tier subcontractors shall maintain the levels of Commercial General Liability Insurance set forth in Section 16 of the Long Form Subcontract agreement.
- C. Commercial Automobile Liability insurance with limits not less than \$1,000,000 each occurrence combined single limit for bodily injury and property damage, including owned, hired or non-owned vehicles, as applicable.

### **2. ADDITIONAL COVERAGES**

- A. Professional Liability Insurance: In the event that Trade Subcontractor employs professional engineer(s) or land surveyor(s) for performing Pre-Construction Services, field engineering, or preparing design calculations, plans and specifications, Trade Subcontractor shall carry or shall require its retained engineers and land surveyors to carry professional liability insurance with limits not less than \$5,000,000 each claim with respect to acts, errors, or omissions in connection with professional services to be provided under the subcontract, with any deductible not to exceed \$250,000 each claim. With respect to land surveyors only, the Trade Subcontractor or its retained engineers should only have to evidence \$1,000,000 in professional liability insurance covering that scope of work, consistent with the standard requirements set forth in Article 16 of the Long Form Subcontract.

### **3. INSURANCE FOR OTHERS**

For general liability and automobile liability Trade Subcontractor shall include as additional insured the Contractor (Webcor/Obayashi Joint Venture), TJPA, its board members, and all

authorized agents and representatives, and members, directors, officers, trustees, agents and employees of any of them.

#### **4. FORMS OF POLICIES AND OTHER INSURANCE REQUIREMENTS**

- A. Workers' Compensation Insurance shall be submitted to the Contractor before the commencement of any of the Work on Site.
- B. Before commencement of the work of this subcontract, certificates of insurance in form and with insurers acceptable to Contractor, evidencing all required insurance and with proper endorsements from Trade Subcontractor's insurance carrier identifying as additional insured the parties indicated under paragraph 3 above, shall be furnished to Contractor with complete copies of policies in accordance with the Project Bidding Manual.
- C. Approval of the insurance by the Contractor shall not relieve or decrease the extent to which Trade Subcontractor or subcontractors of any tier may be held responsible for payment of any and all damages resulting from its operations. All policies of insurance and certificates shall be satisfactory to Contractor.
- D. Trade Subcontractor and its subcontractors shall comply with the provisions of California Labor Code Section 3700. Prior to commencing the performance of work, Trade Subcontractor and all of its subcontractors shall submit to the Contractor a certificate of insurance evidencing liability for workers compensation or proof of self-insurance in accordance with the provisions of the California Labor Code.
- E. Liability insurance, except for professional liability insurance, shall be on an occurrence basis, and said insurance shall provide that the coverage afforded thereby shall be primary coverage (and non-contributory to any other existing valid and collectable insurance) to the full limit of liability stated in the declaration, and such insurance shall apply separately to each insured against whom claim is made or suit is brought, but the inclusion of more than one insured shall not operate to increase the insurer's limits of liability.
- F. Trade Subcontractor shall maintain professional liability coverage continuously throughout the term of this subcontract, and without lapse, for a period three years beyond the Contract Final Completion date to the effect that should occurrences during the Contract term give rise to claims made after expiration of the Contract, such claims shall be covered by such claims-made policies.
- G. Each such policy shall provide that no cancellation or non-renewal shall occur without the carrier giving to Contractor at least 30 days written notice prior thereto.

All notices shall be made to:

Webcor / Obayashi Joint Venture  
1751 Harbor Bay Parkway, Suite 200  
Alameda, CA 94502

- H. Trade Subcontractor, upon notification of receipt by Contractor of any such notice, shall provide Contractor a certificate of the required new or renewed policy at least 10 days before the effective date of such cancellation, change or expiration, with a complete copy of new or renewed policy, if requested.
- I. If, at any time during the life of this subcontract, Trade Subcontractor fails to maintain any item of the required insurance in full force and effect, all work of this subcontract may, at Contractor's sole option, be discontinued immediately, and all subcontract payments due or that become due will be withheld until notice is received by the Contractor as provided in the immediately preceding Paragraph 4.G that such insurance has been restored to full force and effect and that the premiums thereof have been paid for a period satisfactory to the Contractor.
- J. Any failure to maintain any item of the required insurance may, at Contractor's sole option, be sufficient cause for termination for default of this subcontract.

## **5. QUALIFICATIONS**

Trade Subcontractor must provide coverage from insurance companies who shall be legally authorized to engage in the business of furnishing insurance in the State of California. All insurance companies shall have a current A.M. Best Rating not less than "A-, VIII" and shall be satisfactory to Contractor.

## **6. SUBGUARD AND BONDING**

- A. Trade Subcontractor is required to provide a Bid Bond for 5% of the total contract value.
- B. Trade Subcontractor is not required to provide a Payment and Performance Bond. Subguard will be used in lieu of a Payment and Performance Bond.
- C. Trade Subcontractor shall provide all documentation required by Subguard Surety to verify qualification for program.

## **END OF INSURANCE REQUIREMENTS**

## VII. CONTRACT DOCUMENT LIST

The Contract Documents for this Trade Package include the following:

Document Name	Description	Revision Name	Issue Date
Long Form Subcontract		Rev. 0	2014-10-09
Specification Division 00 and Division 01	Division 00 and Division 01 defined in Specification Section 00 01 10		2014-08-11
Technical Specifications	IFC Main Package	Field Order No. T-00027 – Main Package IFC	2014-03-31
Technical Specifications	Roof Top Park <i>Note: Field Order T-00034 is for issuance for current trade packages under contract work up to the roof level. Do not price or proceed with any work above the roof level at this time.</i>	Field Order # T-00034	2014-05-30
Technical Specifications	SFPUC IFB ES Drawings	Field Order # T-00029	2014-06-19
Technical Specifications	MEP/TE/SE/VT Addendum #3	CR No. T-111 ASI #117	2014-06-27
Technical Specifications	MEP/TE/SE/VT Addendum #4	CR No. T-112 ASI #118	2014-06-30
Technical Specifications	VE Round 2 + VE in MEP/TE/SE/VT IFB Add 4	CR No. T-113 ASI #119	2014-07-02
Technical Specifications	TG08.2, TG08.7 and TG08.10	CR No. T-115 ASI #120	2014-07-11
Technical Specifications	MEP/TE/SE/VT IFB Addendum #5	CR No. T-119 ASI #121	2014-07-18
Technical Specifications	VE Round 3	CR No. T-121 ASI #122	2014-07-23
Technical Specifications	Civil/Utilities and RFI Responses	CR No. T-122 ASI #123	2014-08-06
Technical Specifications	VE Round 4	CR No. T-123 ASI #124	2014-08-18
Technical Specifications	TG10.4 Electrical	CR. No. T-124 ASI #125	2014-08-19
Technical Specifications	TG08.10 – Glass Curtain Wall (W-2, W-3, W-4, W-6, W-8)	CR No. T-125 ASI #126	2014-08-22
Technical Specifications	TG12.2 – OCS	Field Order # T-00033	2014-09-10
Technical Specifications	Bidding Clarifications and RFI Responses	CR No. T-126 ASI #127	2014-09-12
Technical Specifications	SFPUC IFB ES Drawings Revision 1	Field Order # T-00029R1	2014-09-16

Document Name	Description	Revision Name	Issue Date
Drawings	IFC Main Package	Field Order No. T-00027 – Main Package IFC	2014-03-31
Drawings	Roof Top Park <i>Note: Field Order T-00034 is for issuance for current trade packages under contract work up to the roof level. Do not price or proceed with any work above the roof level at this time.</i>	Field Order # T-00034	2014-05-30
Drawings	SFPUC IFB ES Drawings	Field Order # T-00029	2014-06-19
Drawings	MEP/TE/SE/VT Addendum #3	CR No. T-111 ASI #117	2014-06-27
Drawings	MEP/TE/SE/VT Addendum #4	CR No. T-112 ASI #118	2014-06-30
Drawings	VE Round 2 + VE in MEP/TE/SE/VT IFB Add 4	CR No. T-113 ASI #119	2014-07-02
Drawings	TG08.2, TG08.7 and TG08.10	CR No. T-115 ASI #120	2014-07-11
Drawings	MEP/TE/SE/VT IFB Addendum #5	CR No. T-119 ASI #121	2014-07-18
Drawings	VE Round 3	CR No. T-121 ASI #122	2014-07-23
Drawings	Civil/Utilities and RFI Responses	CR No. T-122 ASI #123	2014-08-06
Drawings	VE Round 4	CR No. T-123 ASI #124	2014-08-18
Drawings	TG10.4 Electrical	CR No. T-124 ASI #125	2014-08-19
Drawings	TG08.10 – Glass Curtain Wall (W-2, W-3, W-4, W-6, W-8)	CR No. T-125 ASI #126	2014-08-22
Drawings	TG12.2 – OCS	Field Order # T-00033	2014-09-10
Drawings	Bidding Clarifications and RFI Responses	CR No. T-126 ASI #127	2014-09-12
Drawings	SFPUC IFB ES Drawings Revision 1	Field Order # T-00029R1	2014-09-16
3D Models	Refer to the following file sharing website: <a href="https://webcor.box.com/s/st43wnq91t2t8d0nogvj">https://webcor.box.com/s/st43wnq91t2t8d0nogvj</a> Password: WebcorBid!	CR No. T-123 ASI #124	2014-08-18
3D Models	Refer to the following file sharing website: <a href="https://webcor.box.com/s/48xt4b9l3ky4ukw494n6">https://webcor.box.com/s/48xt4b9l3ky4ukw494n6</a> Password: WebcorBid!	CR No. T-126 ASI #127	2014-09-12

Document Name	Description	Revision Name	Issue Date
RFI's	Preconstruction RFIs (P1-0001 – P1-0509) Refer to the following link: <a href="https://webcor.box.com/s/y6j9sumu82ho7n5b728i">https://webcor.box.com/s/y6j9sumu82ho7n5b728i</a>		2014-10-07
Project Bidding Manual		Rev. 26	2014-08-12
<u>Exhibit A</u>	<u>Trade Subcontractor Bid Package Manual and Forms – Contract #301000806</u>	Rev. 0	2014-10-09
Exhibit B	Warranty		2010-09
Exhibit C	Lien Releases	Rev. 07/2012	2012-08-22
Exhibit D	Sample Certificate of Insurance and Additional Insured Endorsement		
Exhibit E	LEED Subcontractor Submission Letter and Data Sheet	Rev. 3	2014-03-13
Exhibit F	BIM Requirements	Rev. 2	2014-10-09
Exhibit G	Subcontractor Payment Requisition		2012-04-03
Exhibit H	Site Specific Safety Plan	Rev. 9	2014-07-10
Exhibit I	Schedule	Rev. 0	2014-09-24
Exhibit J	Contractor Quality Control Plan	Rev. 10	2013-11-04
Exhibit K	Sediment and Erosion Control Plan		2011-02
Exhibit L	Hazardous Materials Management Plan	Rev. 1	2011-03-11
Exhibit M	RFI Q&A Log		2014-09-29
Exhibit N	Noise & Vibration Mitigation Management Plan	Rev. 4	2012-09-07
Exhibit O	Air Quality Management Plan	Rev. 5	2012-01-16
Exhibit P	Construction Waste Management Plan	Rev. 6	2013-11-07
Exhibit Q	Apprenticeship Program	Rev. 0	2012-03-23
Exhibit R	Survey Information	Rev. 0	2012-03-23
Exhibit S	Traffic Control Plan	Rev. 2	2012-08-22
Exhibit U	Submittal Schedule	Rev. 0	2013-11-07
Exhibit W	Waterproofing		2011-05

**END OF CONTRACT DOCUMENT LIST**



### **VIII. SUPPLEMENTAL DOCUMENTS LIST**

This Trade Subcontractor shall review all of the supplemental documents listed below, which have been determined to be related to this Trade Package scope of work, and be familiar with all conditions affecting this Trade Subcontractor's scope of work. All associated costs due to the conditions and plans of the reference documents including all coordination shall be included in the Bid Amount.

Scoping Drawings are for use in clarifying the general scope of work, but are not all inclusive of the scope described. If a conflict or omission exists within the Scoping Documents and/or the Detailed Scope of Work, the written scope shall govern.

The Supplemental Documents for TG08.6 Metal Ceiling are listed below and are currently available through Webcor/Obayashi Joint Venture's FTP website:

<b>Document Type</b>	<b>Document Name</b>	<b>Revision Date</b>
Scoping Drawing	A1-4302 (SKA-3981) – Ground Level Zone 02 Reflected Ceiling Plan	10-09-2014
Scoping Drawing	A1-4304 (SKA-3567-R1) – Ground Level Zone 04 Reflected Ceiling Plan	10-09-2014
Scoping Drawing	A1-4306 (SKA-3984) – Ground Level Zone 06 Reflected Ceiling Plan	10-09-2014
Scoping Drawing	A1-4307 (SKA-3985) – Ground Level Zone 06 Reflected Ceiling Plan	10-09-2014
Scoping Drawing	A1-4402 (SKA-3986) – Second Level Zone 02 Reflected Ceiling Plan	10-09-2014
Scoping Drawing	A1-4403 (SKA-3987) – Second Level Zone 03 Reflected Ceiling Plan	10-09-2014
Scoping Drawing	A1-4404 (SKA-3988) – Second Level Zone 04 Reflected Ceiling Plan	10-09-2014
Scoping Drawing	A1-4405 (SKA-3989) – Second Level Zone 05 Reflected Ceiling Plan	10-09-2014
Scoping Drawing	A1-4406 (SKA-3990) – Second Level Zone 06 Reflected Ceiling Plan	10-09-2014
Scoping Drawing	A1-4407 (SKA-3991) – Second Level Zone 07 Reflected Ceiling Plan	10-09-2014
Scoping Drawing	A1-4502 (SKA-3992) – Bus Deck Level Zone 02 Reflected Ceiling Plan	10-09-2014
Scoping Drawing	A1-4503 (SKA-3898-R1) – Bus Deck Level Zone 03 Reflected Ceiling Plan	10-09-2014

Scoping Drawing	A1-4504 (SKA-3899-R1) – Bus Deck Level Zone 04 Reflected Ceiling Plan	10-09-2014
Scoping Drawing	A1-4505 (SKA-3900-R1) – Bus Deck Level Zone 05 Reflected Ceiling Plan	10-09-2014
Scoping Drawing	A1-4506 (SKA-3901-R1) – Bus Deck Level Zone 06 Reflected Ceiling Plan	10-09-2014
Scoping Drawing	A1-4507 (SKA-3994) – Bus Deck Level Zone 07 Reflected Ceiling Plan	10-09-2014
Scoping Drawing	A1-6023 (SKA-3589-R2) – Building Section At Grid Line G Zone 03	10-09-2014
Scoping Drawing	A1-6102 (SKA-3463-R1) – Building Section At Grid Line G Zone 03	10-09-2014
Scoping Drawing	A1-6103 (SKA-3594-R1) – Building Section At Grid Line G	10-09-2014
Scoping Drawing	A1-7513 – Public Stair Details	10-09-2014
Scoping Drawing	A1-7704 – Overhead Coiling Grille & Door Details Bus Deck Level	10-09-2014
Scoping Drawing	A1-8205D – Steel-Supported Glazed Curtain Wall – Grand Hall (W-3) Details	10-09-2014
Scoping Drawing	A1-8237D – Alum.-Framed Unitized Curtain Wall Bus Deck (W-4) Details	10-09-2014
Scoping Drawing	A1-8500 (SKA-3929) – Aluminum Ceiling System (W-14) System Sheet	10-09-2014
Scoping Drawing	A1-8501 (SKA-3930) – Aluminum Ceiling System (W-14) System Sheet	10-09-2014
Scoping Drawing	A1-8502 (SKA-3931) – Aluminum Ceiling System (W-14) System Sheet	10-09-2014
Scoping Drawing	A1-8503 (SKA-3932) – Aluminum Ceiling System (W-14) System Sheet	10-09-2014
Scoping Drawing	A1-8506 (SKA-3934) – Aluminum Ceiling System (W-14) System Sheet	10-09-2014
Scoping Drawing	A1-8510 (SKA-3935) – Aluminum Ceiling System (W-14) Detail Sheet	10-09-2014
Scoping Drawing	A1-8511 (SKA-3936) – Aluminum Ceiling System (W-14) Detail Sheet	10-09-2014

Scoping Drawing	A1-8520 (SKA-3937) – Aluminum Ceiling System (W-14) Detail Sheet	10-09-2014
Scoping Drawing	A1-8521 (SKA-3938) – Aluminum Ceiling System (W-14) Detail Sheet	10-09-2014
Scoping Drawing	A1-8522 (SKA-3939) – Aluminum Ceiling System (W-14) Detail Sheet	10-09-2014
Scoping Drawing	A1-8530 (SKA-3942) – Aluminum Ceiling System (W-14) Detail Sheet	10-09-2014
Scoping Drawing	A1-8531 (SKA-3943) – Aluminum Ceiling System (W-14) Detail Sheet	10-09-2014
Scoping Drawing	A1-8532 (SKA-3944) – Aluminum Ceiling System (W-14) Detail Sheet	10-09-2014
Scoping Drawing	A1-8533 (SKA-3945) – Aluminum Ceiling System (W-14) Detail Sheet	10-09-2014
Scoping Drawing	A1-8535 (SKA-3946) – Aluminum Ceiling System (W-14) Detail Sheet	10-09-2014
Scoping Drawing	A1-8536 (SKA-3947) – Aluminum Ceiling System (W-14) Detail Sheet	10-09-2014
Scoping Drawing	A1-8550 (SKA-3948) – Aluminum Ceiling System (W-14) OCS Detail Sheet	10-09-2014
Scoping Drawing	A1-8551 (SKA-3949) – Aluminum Ceiling System (W-14) OCS Detail Sheet	10-09-2014
Scoping Drawing	A1-8552 (SKA-3950) – Aluminum Ceiling System (W-14) OCS Detail Sheet	10-09-2014
Scoping Drawing	A1-8615 (SKA-3965) – Portland Cement Plaster Fascia (W-18) System Details	10-09-2014

Trade Subcontractor is responsible for reviewing and coordinating its work with all supplementary information provided.

The Supplementary Documents are available for download on the following FTP website:

TG08.6 - <https://webcor.box.com/s/199gtl1yc48ky82ljrjr>

Password: WebcorBid!

## END OF SUPPLEMENTAL DOCUMENTS LIST

**ATTACHMENT 1 BID FORM AND SCHEDULE OF BID PRICES**

TO THE TJPA EXECUTIVE DIRECTOR

In response to the Advertisement for Bids for the following public work:

**TG08.6 – Metal Ceiling**

The undersigned Bidder hereby proposes and agrees to execute the required contract, shall it be awarded to said Bidder, and to do all the work and furnish all the materials therefor, all in accordance with the Specifications and Drawings referred to in said Advertisement for Bids and at the prices named in the attached Schedule of Bid Prices.

The undersigned declares: That it is the Bidder (or by holding the position below indicated is authorized to execute this Bid Form on behalf of the Bidder); that said Bidder submits this Bid; that said Bidder has not, nor have any of its agents, officers, representatives or employees, been guilty of collusion with any officer or representative of Webcor/Obayashi Joint Venture or the TJPA, or with any other party or parties in the submission of this Bid; nor has said Bidder received any preferential treatment by any officer or employee of Webcor/Obayashi Joint Venture or the TJPA in the making or submitting of this Bid. The undersigned declares under penalty of perjury that all representations made on this Bid Form are true and correct.

Executed on \_\_\_\_\_ 20 \_\_\_\_\_

\_\_\_\_\_  
Telephone Number

\_\_\_\_\_  
Name of Firm or Corporation

\_\_\_\_\_  
Bidder or Authorized Representative

\_\_\_\_\_  
Position in Firm or Corporation

\_\_\_\_\_  
S.F. Business Tax Registration  
Certificate Number

\_\_\_\_\_  
Address of Firm or Corporation      Zip Code

\_\_\_\_\_  
Contractor's California License No.:

\_\_\_\_\_  
License Expiration Date:

**BOND OR CHECK REQUIRED:** There is herewith attached, as required by law, bid security in accordance with Project Bidding Manual.

***NONDISCRIMINATION IN CONTRACTS AND SMALL BUSINESS ENTERPRISE PROGRAM:***

*Provisions of chapter 12B (including its implementing Rules and Regulations) of the San Francisco Administrative Code, and the TJPA Small Business Enterprise Program are incorporated herein and by reference made a part of the Bid Sections as though fully set forth. The Bidder and all lower-tier subcontractors and suppliers shall comply with these provisions and shall submit all required sections in a timely manner.*

**SCHEDULE OF BID PRICES**  
**TG08.6 Metal Ceiling**

Name of Bidder: \_\_\_\_\_

The undersigned, having examined all referenced documents and the Drawings, understanding the terms and conditions of the Contract Documents and the local conditions affecting the performance and costs of the Work, and having fully inspected the Site in all its particulars, hereby proposes and agrees to fully perform the Work as indicated on the Drawings and in accordance with the requirements of the Contract Documents within the time stated therein, and for the following price(s):

No.	Item Description	Unit of Measure	Bid Price
1	W-14 Metal Ceilings	LS	
<b>TOTAL BASE BID PRICE</b>			
<b>PERFORMANCE AND PAYMENT BOND RATE</b> (This is for informational purposes only)			%
<b>POTENTIAL PAYMENT AND PERFORMANCE BOND COST</b> (Total Base Bid Price x Bond Rate, this is for informational purposes only)			\$

Bidder shall furnish a price for all Bid items, set forth in the Schedule of Bid Prices. Failure to furnish a price for all items set forth in the Schedule of Bid Prices shall render the Bid non-responsive and will be cause for its rejection. If an item is left blank, the price shall be assumed to be zero (\$0.00).

In case of discrepancy between the sum of Bid item amounts and the Total Base Bid Price, the sum of said amounts shall prevail. In case of discrepancy between words and figures, the words shall prevail.

Accepted VE Proposals, if any, shall be deducted from the Total Base Bid Price to determine the Bidder's Total Bid Price.

Bidder acknowledges and agrees that this Bid, if not withdrawn prior to the scheduled time for receipt of Bids, shall not be withdrawn for a period of 90 days thereafter.

Total Bid Price: \$ \_\_\_\_\_

In Written Words: \_\_\_\_\_

\_\_\_\_\_  
\_\_\_\_\_

Bid submitted by:

\_\_\_\_\_(seal)  
Name of Firm, Corporation, Partnership or Joint Venture

\_\_\_\_\_  
Names of All Partners, if Partnership

\_\_\_\_\_  
State of Incorporation, if Corporation

\_\_\_\_\_  
Signature of Bidder or Authorized Representative

\_\_\_\_\_  
Date of Bid

\_\_\_\_\_  
Name and Title of Authorized Representative

Note: If Bidder is a corporation, set forth the legal name of the corporation together with the signature of the officer or officers authorized to sign contracts on behalf of the corporation. If Bidder is a partnership, set forth the name of the firm together with the signature of the partner or partners authorized to sign contracts on behalf of the partnership. A corporate authority document which indicates individual is authorized to execute bid documents on behalf of the Firm, Corporation, Partnership or Joint Venture shall be attached.

**END OF BID FORM AND SCHEDULE OF BID PRICES**

## ATTACHMENT 2 LOGISTICS

The following attached drawings present the conceptual logistical as-built plans. Locations and configurations are for reference and subject to change:

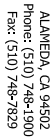
SL-001 Site Logistics Plan dated 03/05/2014  
SL-002 Site Truck Routing Plan dated 03/22/2012  
SL-025 Site Logistics Construction Zones dated 05/28/2014  
SL-027 Rooftop Obstructions – For Reference Only dated 12/05/2013  
A101 Personnel and Material Hoist Layout – Bracing dated 12/20/2013  
A102 Personnel and Material Hoist Layout – Lower Concourse dated 12/20/2013  
A103 Personnel and Material Hoist Layout – Ground Level dated 12/20/2013  
A104 Personnel and Material Hoist Layout – Second Level dated 12/20/2013  
A105 Personnel and Material Hoist Layout – Bus Deck Level dated 12/20/2013  
A106 Personnel and Material Hoist Layout – Roof Level dated 12/20/2013  
A107 Personnel and Material Hoist #1 Location dated 12/20/2013  
A108 Personnel and Material Hoist #2 Location dated 12/20/2013  
A109 Personnel and Material Hoist #3 Location dated 12/20/2013  
A110 Personnel and Material Hoist #4 Location dated 12/20/2013  
X-01 Logistics Aerial View dated 11/07/2013  
X-03 3D Section dated 11/07/2013  
X-04 3D Section dated 11/07/2013  
X-05 3D Section West Facing dated 11/07/2013  
X-06 Crane Section dated 11/07/2013  
X-07 Roof Rail-Mounted Cranes dated 11/07/2013  
X-08 Temporary Platform dated 11/07/2013  
X-15 Rooftop Crane and Tower Crane Logistics dated 04/23/2013  
X-16 Natoma-Howard St. Area Logistics dated 04/23/2013  
X-17 Rail Crane Logistics dated 12/20/2013  
X-18 Rail Crane Logistics 3D Section dated 12/20/2013

## END OF LOGISTICS

## ISSUANCE LOG

REV No.	ISSUE	DATE
0	Issued For Bid TG08.6	2014-10-09

## END OF EXHIBIT A



Fax: 510-748-7830

Fax: 510-748-7830

Fax: 510-748-7830

TRANSBAY TRANSIT CENTER

SAN FRANCISCO, CA

Revision Block		
Rev. No.	Description	Date
01	ISE Phase	07/30/10
02	Updated Item A Material Notes	08/13/10
03	Updated TO66 Item 1	09/27/10
04	Added TO66 TO A, TO66 TO K MP	09/27/10
E		10/12/10
F	Updated TO66 ISE	10/26/10
G	Updated TO66 TO A, TO66 TO K	05/22/12
H	Updated TO66 Item 1, TO66 Item 2	06/16/12
I	Updated TO66 Item 3, TO66 Item 4	06/22/12
J	Added TO66 TO A, TO66 TO K, TO66 TO L	06/22/12
RC		10/20/11
Checked By	Date	10/20/11
MP	Date	10/20/11

## Site Logistics

SCALE: N/A

THESE DRAWINGS ARE NOT INTENDED TO REPLACE THE DESIGN ARCHITECTURAL AND STRUCTURAL DRAWINGS. ALL DIMENSIONS, LOCATIONS, AND ELEVATIONS SHOWN ON THIS DRAWING ARE TO BE CHECKED ON-SITE AGAINST THE LATEST DESIGN AND DOCUMENTATIONS.

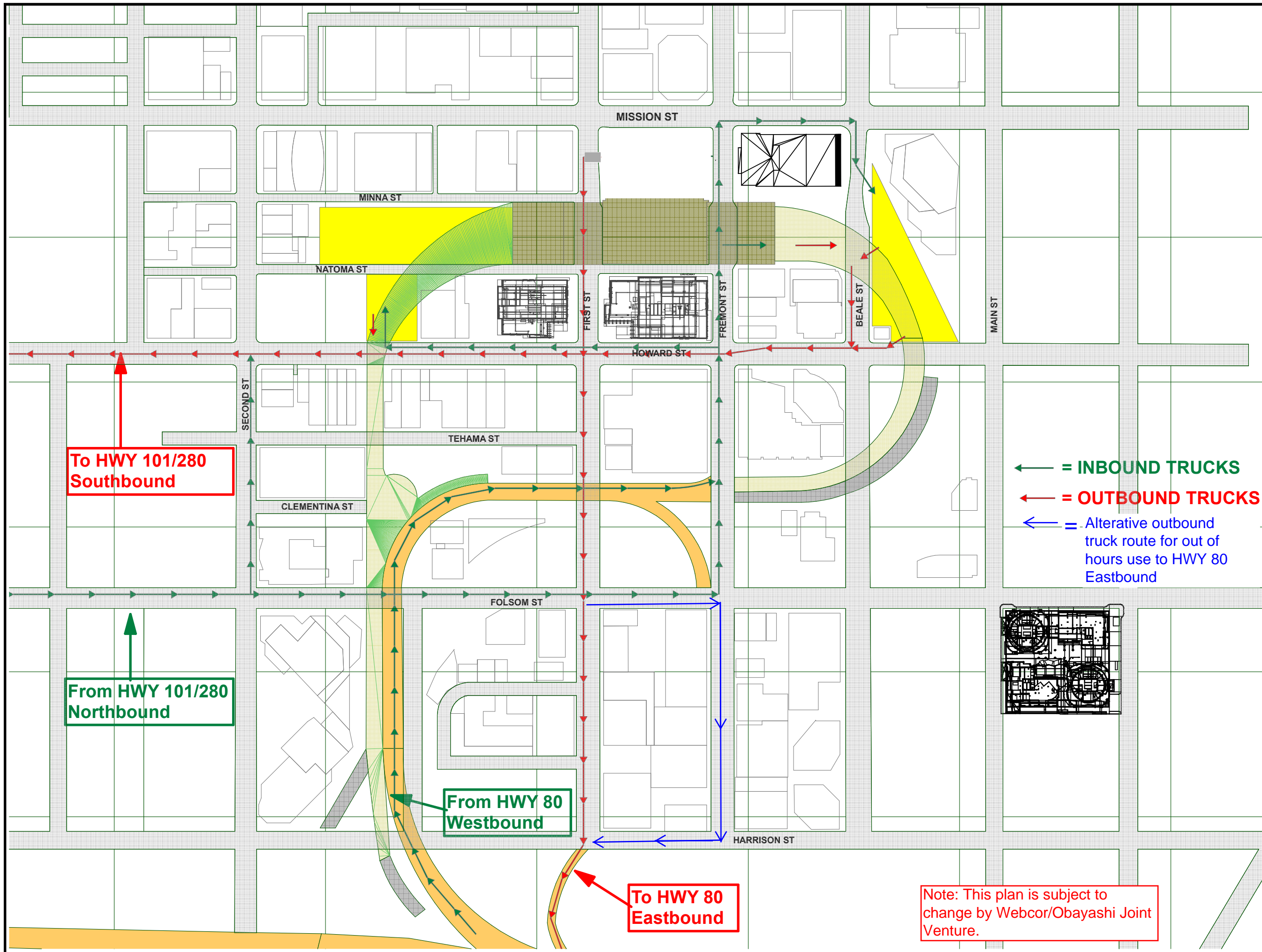
SL-001

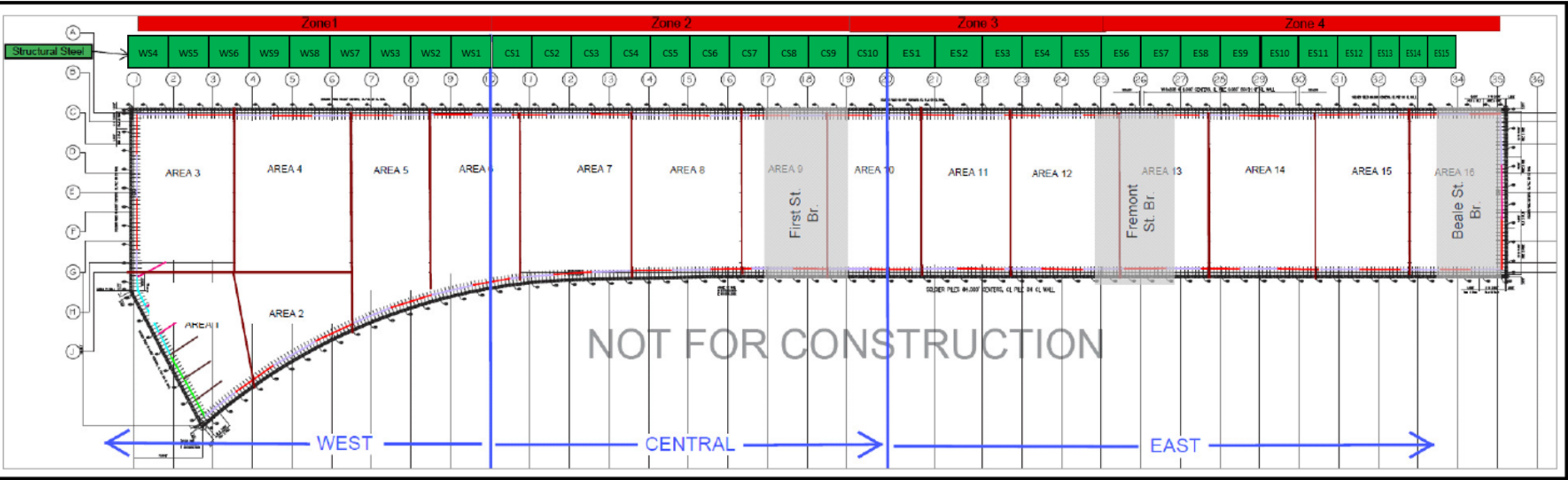


SHEET TITLE

# Truck Routing Plan

SL - 002





NOT FOR CONSTRUCTION

IMPORTANT NOTE:  
THESE DRAWINGS ARE NOT INTENDED TO REPLACE  
THE DESIGN ARCHITECTURAL AND STRUCTURAL  
DRAWINGS. ALL DIMENSIONS, LOCATIONS, AND  
ELEVATIONS SHOWN ON THIS DRAWING ARE TO BE  
CHECKED ON-SITE AGAINST THE LATEST DESIGN AND  
DOCUMENTATIONS.

1751 HARBOR BAY PARKWAY  
SUITE 200  
ALAMEDA, CA 94502  
Phone: (510) 748-1900  
Fax: (510) 748-7829

JOB SITE  
Address: 175 BEALE ST  
SAN FRANCISCO, CA 94105  
Phone: 415-978-5700  
Fax: 510-748-7830

# TRANSBAY TRANSIT CENTER

## SAN FRANCISCO, CA

### Revision Block

Rev. No.	Description	Date
01	Updated for TGD6 Below Grade Addendum 02	08-22-12
02	Updated for TGD7.1 #B	10-31-12
03	Updated for TGD7.1#C, TGD7.1C & TGD7.1E	04-05-13
04	Update	5/28/14

Drawn By: DH Date: 08-22-12  
Checked By: SR Date: 08-22-12

Job No.: 30100

Construction Zones and Areas

SCALE: N/A

SL-025



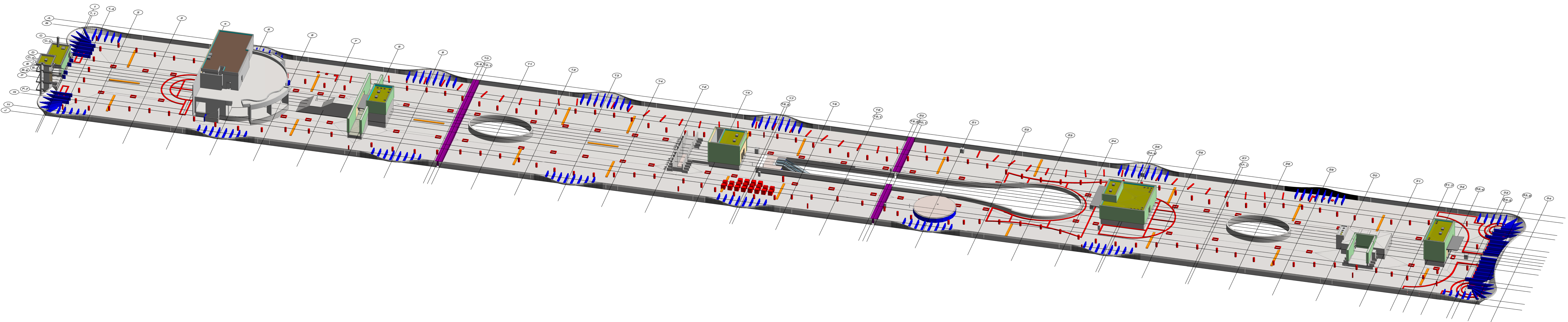
Transbay Transit Center  
San Francisco, California

REV	DATE	DESCRIPTION
1	12/5/2013	PROJECT NO. X
2		MODEL FILE: X
3		DRAWN BY: Ty McConnell X
4		CHECKED BY: X
5		COPYRIGHT

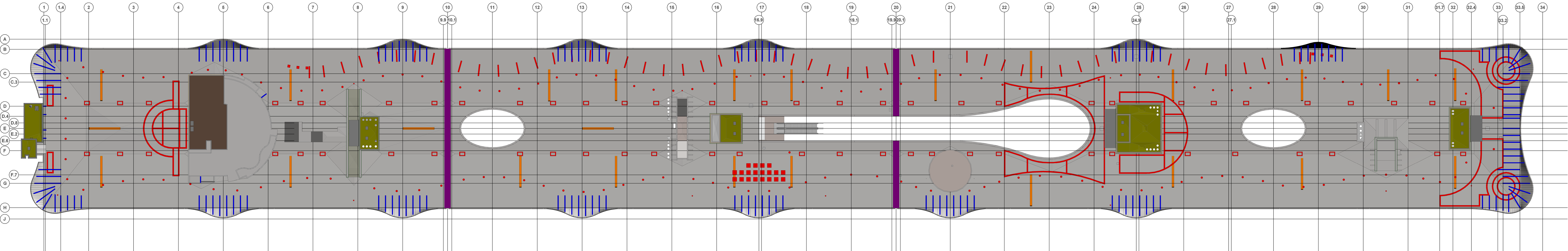
Rooftop  
Obstructions  
For Reference  
Only

SL-027

Scale AS SHOWN



2 3D  
SCALE: NTS



1 Plan  
SCALE: 1" = 20'-0"





The size, quantity, and position of internal bracing elements is based on the Internal Bracing and Shoring Wall Drawings dated 09/13/2013.



**175 Beale Street  
San Francisco, CA**

## Transbay Transit Center

San Francisco, CA

R1	12/16/2013	
MARK	DATE	DESCRIPTION

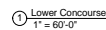
PROJECT NO:	X
MODEL FILE:	X
DRAWN BY:	X
CHKD BY:	X
COPYRIGHT	

SHEET TITLE

## Personnel and Material Hoist Layout - Bracing

A101

Scale AS SHOWN



The size, quantity, and position of internal bracing elements is based on the Internal Bracing and Shoring Wall Drawings dated 09/13/2013.

Scale AS SHOWN

Scale AS SHOWN



The size, quantity, and position of internal bracing elements is based on the Internal Bracing and Shoring Wall Drawings dated 09/13/2013.

## Transbay Transit Center

San Francisco, CA

R1	12/16/2013	
MARK	DATE	DESCRIPTION

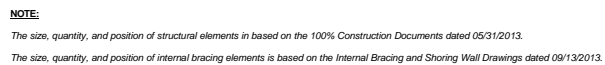
PROJECT NO:	X
MODEL FILE:	X
DRAWN BY:	X
CHKD BY:	X
COPYRIGHT	

SHEET TITLE

### Personnel and Material Hoist Layout - Second Level

A104

Scale AS SHOWN



San Francisco, CA

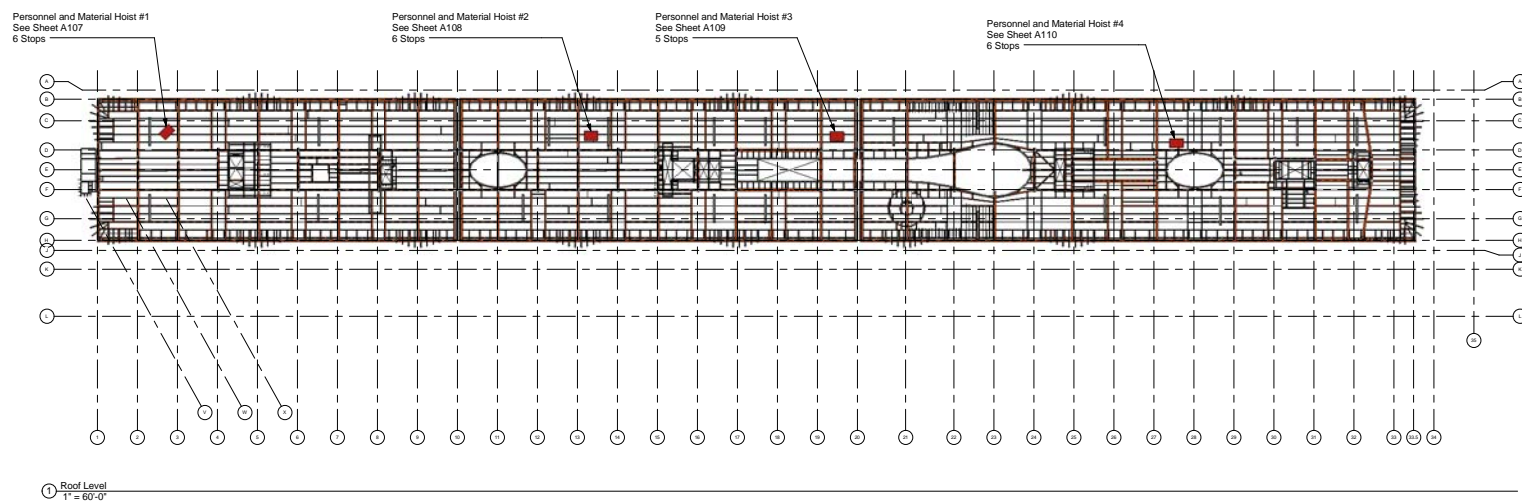
PROJECT NO:	X
MODEL FILE:	X
DRAWN BY:	X
CHK'D BY:	X
COPYRIGHT	

SHEET TITLE

A105

Scale AS SHOWN





## Transbay Transit Center

San Francisco, CA

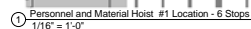
R1	12/16/2013	
MARK	DATE	DESCRIPTION

SHEET TITLE

### Personnel and Material Hoist Layout - Roof Level

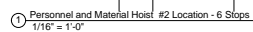
A106

Scale AS SHOWN



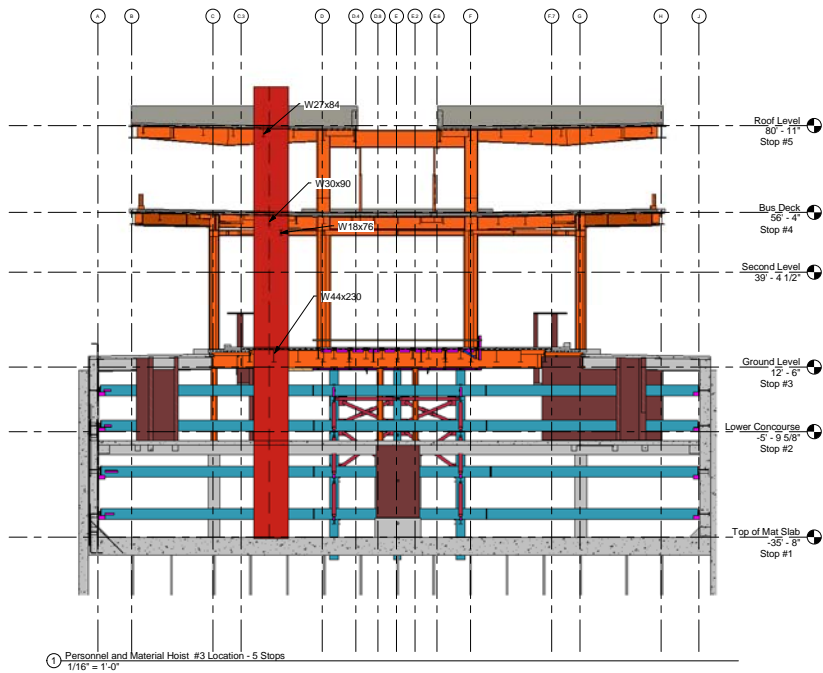
The size, quantity, and position of internal bracing elements is based on the Internal Bracing and Shoring Wall Drawings dated 09/13/2013.

Scale AS SHOWN



The size, quantity, and position of internal bracing elements is based on the Internal Bracing and Shoring Wall Drawings dated 09/13/2013.

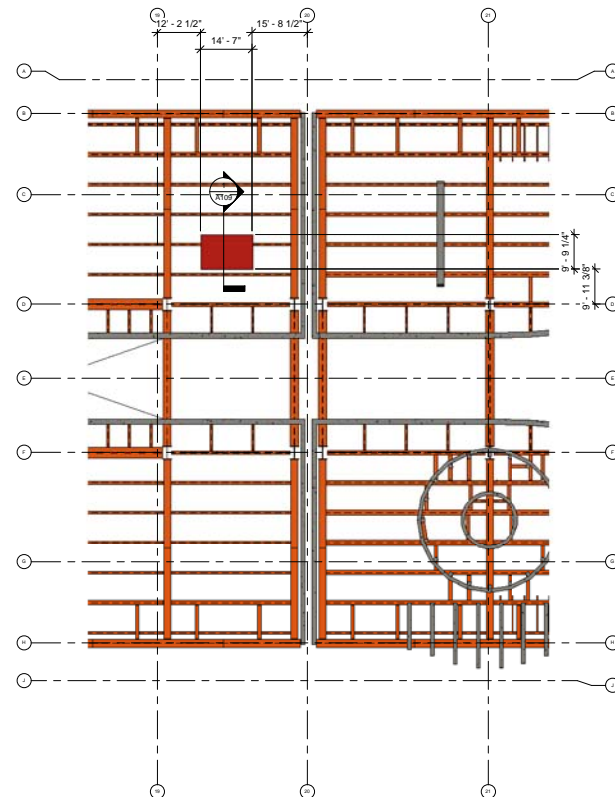




**NOTE:**

The size, quantity, and position of structural elements in based on the 100% Construction Documents dated 05/31/2013.

The size, quantity, and position of internal bracing elements is based on the Internal Bracing and Shoring Wall Drawings dated 09/13/2013.



175 Beale Street  
San Francisco, CA

Transbay Transit Center

San Francisco, CA

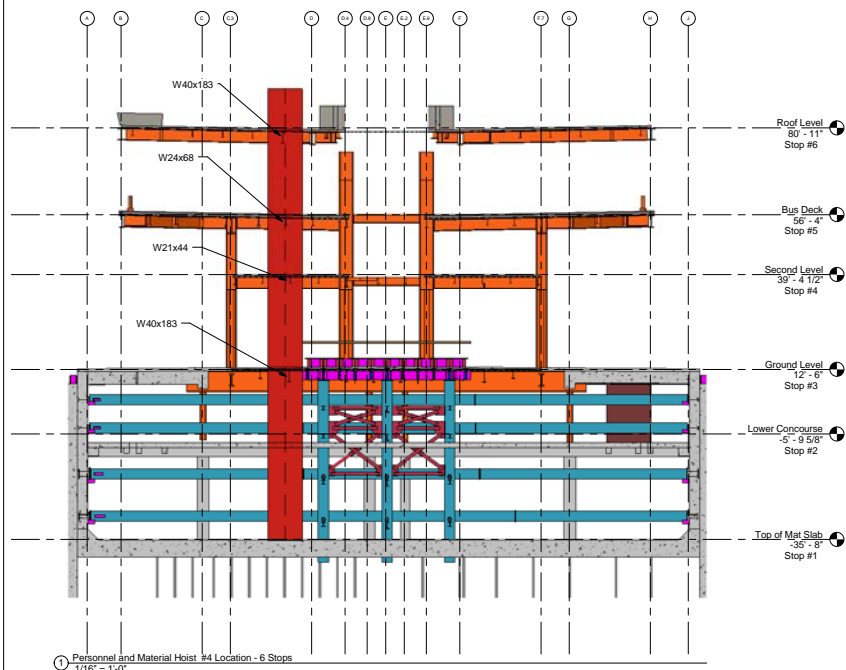
MARK	DATE	DESCRIPTION
R1	12/16/2013	

PROJECT NO.	X
MODEL FILE	X
DRAWN BY:	X
CHKD BY:	X
COPYRIGHT	

SHEET TITLE
Personnel and Material Hoist #3 Location

A109

Scale	AS SHOWN
-------	----------

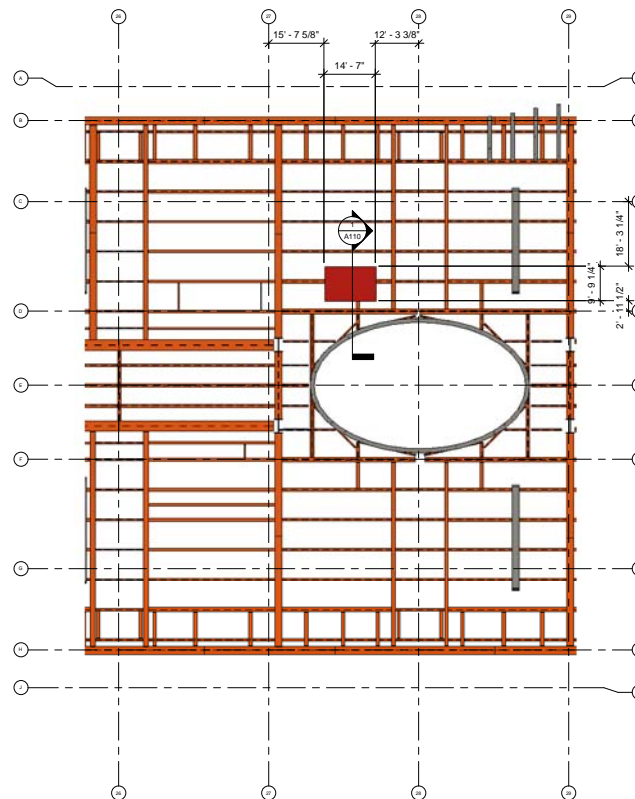


① Personnel and Material Hoist #4 Location - 6 Stops  
1/16" = 1'-0"

**NOTE:**

The size, quantity, and position of structural elements in based on the 100% Construction Documents dated 05/31/2013.

The size, quantity, and position of internal bracing elements is based on the Internal Bracing and Shoring Wall Drawings dated 09/13/2013.



② Personnel and Material Hoist #4 Detail - Roof Level  
1/16" = 1'-0"



175 Beale Street  
San Francisco, CA

Transbay Transit Center

San Francisco, CA

MARK	DATE	DESCRIPTION
R1	12/16/2013	

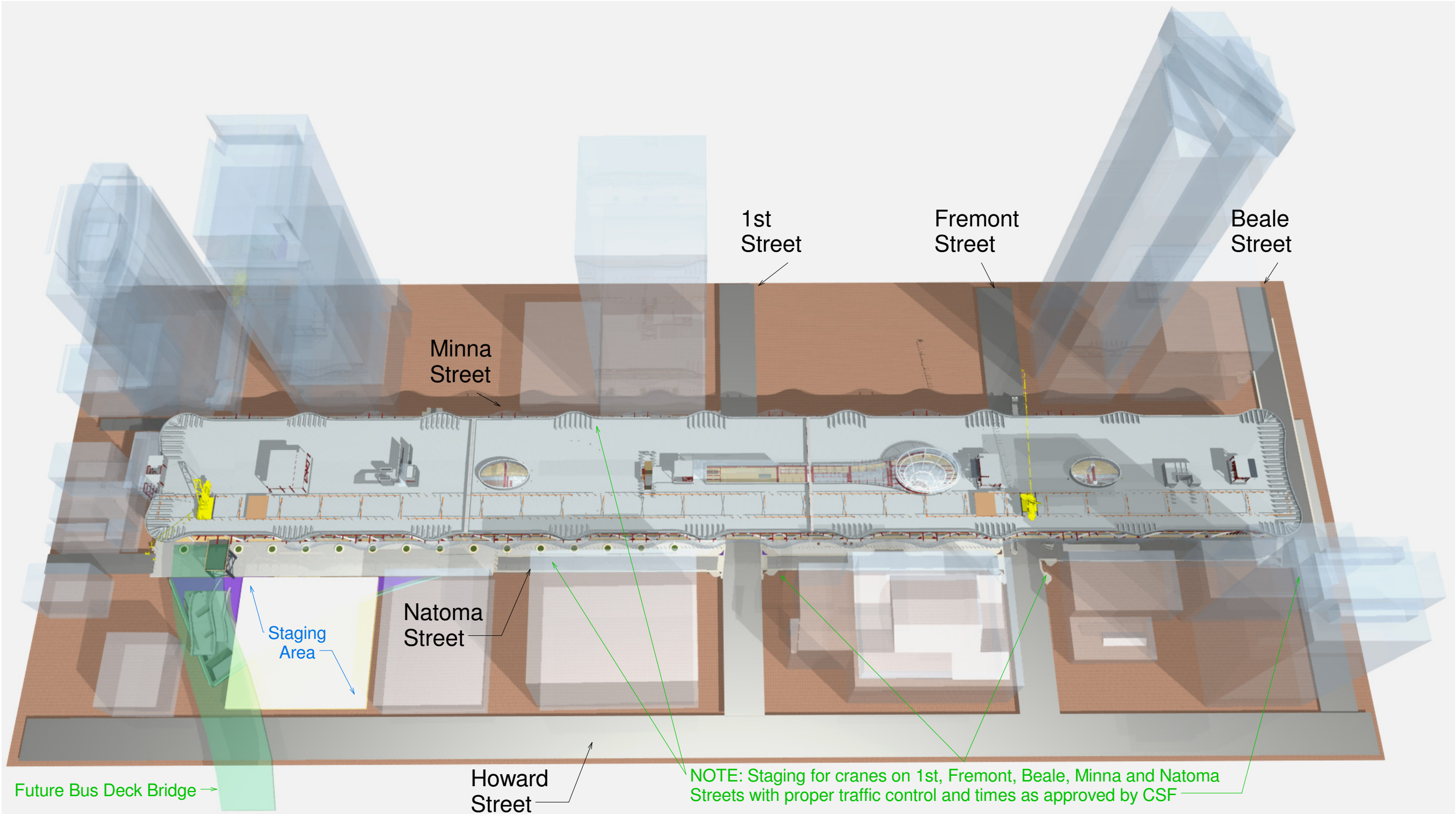
PROJECT NO:	X
MODEL FILE:	X
DRAWN BY:	X
CHKD BY:	X
COPYRIGHT	

SHEET TITLE
Personnel and Material Hoist #4 Location

A110

Scale	AS SHOWN
-------	----------





Transbay Transit Center

San Francisco, California

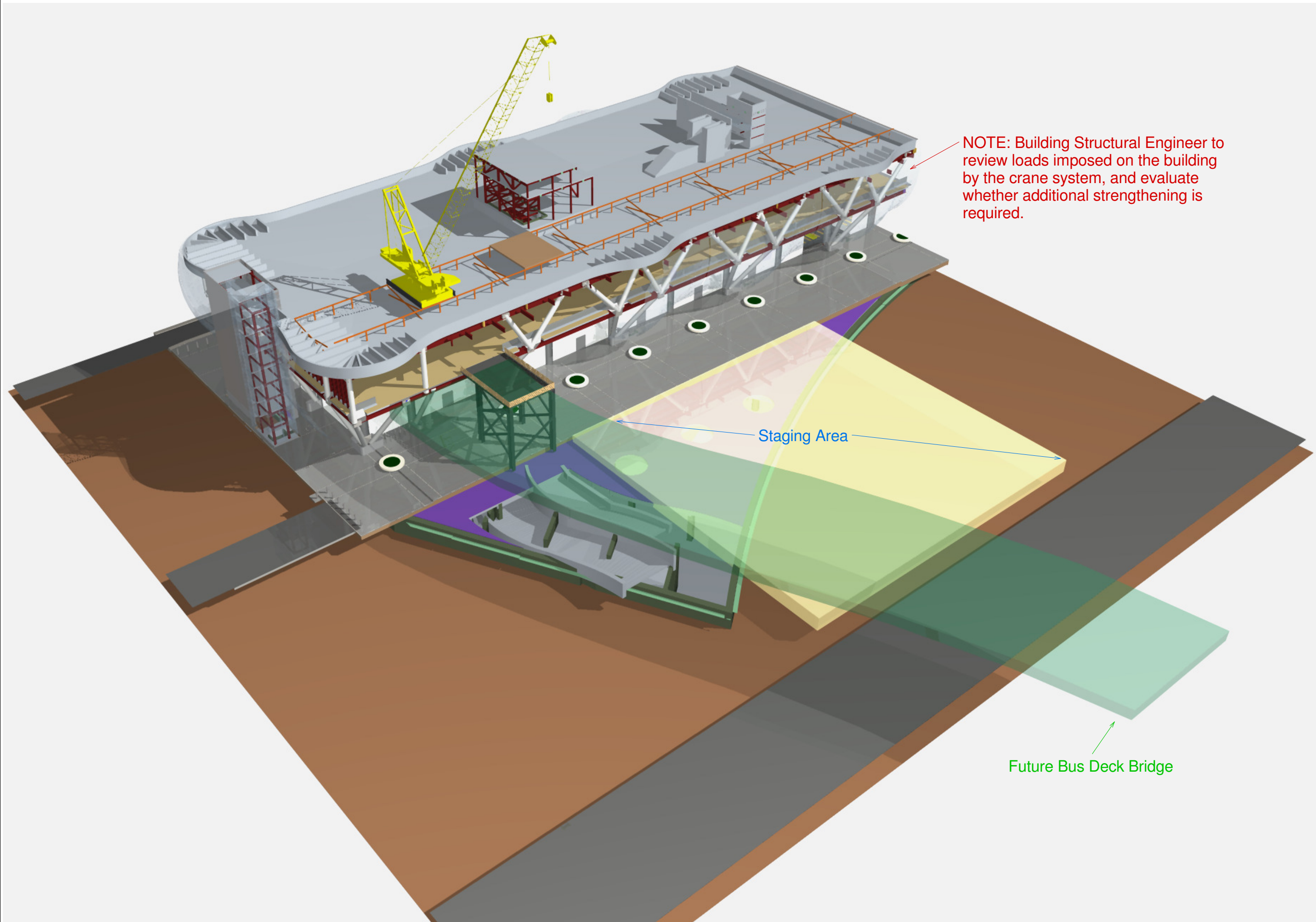
MARK	DATE	DESCRIPTION

PROJECT NO:	X
MODEL FILE:	X
DRAWN BY:	Matt Zwetzig
CHK'D BY:	X
COPYRIGHT	

SHEET TITLE

Logistics  
Aerial View





Transbay Transit Center

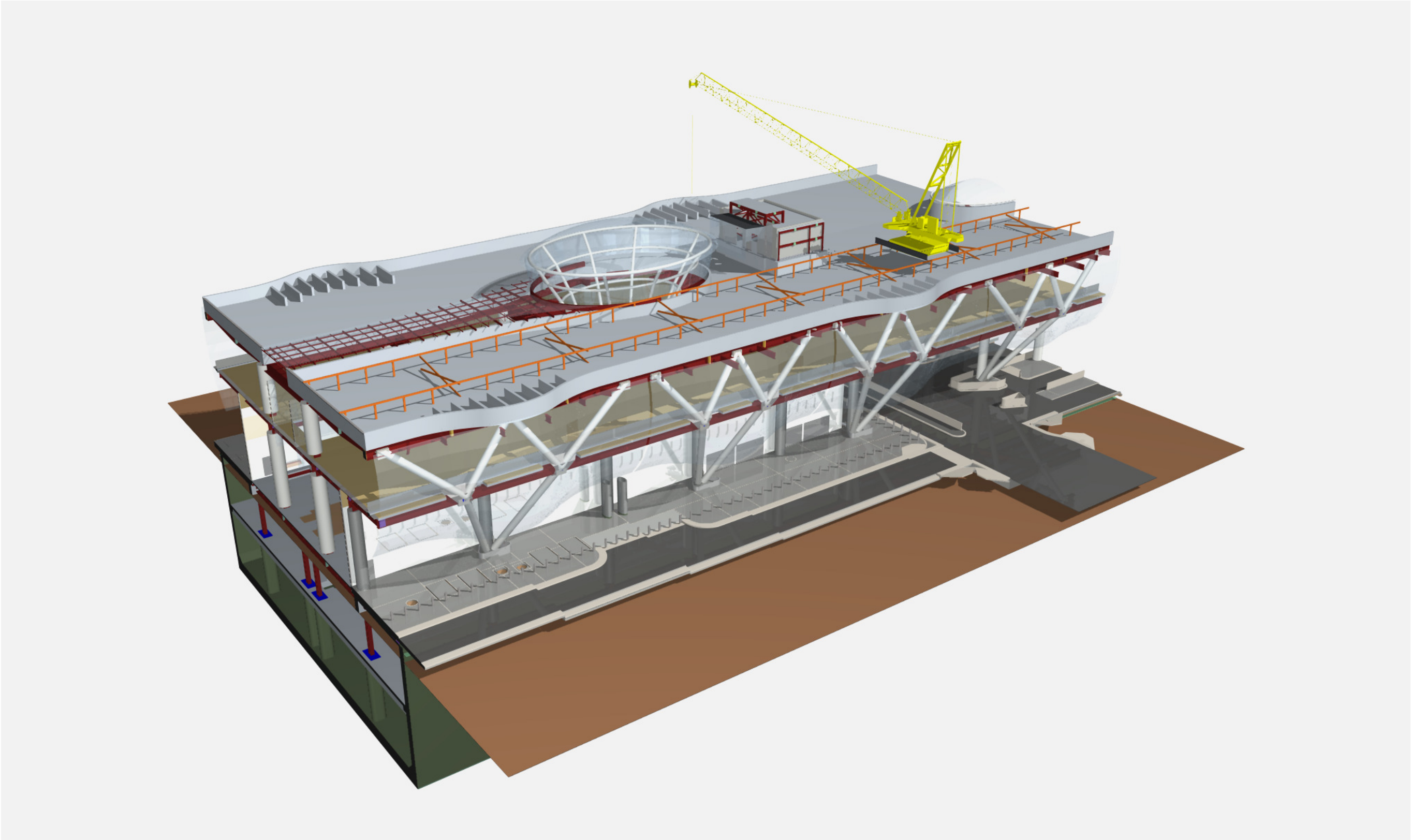
San Francisco, California

MARK	DATE	DESCRIPTION

PROJECT NO:	X
MODEL FILE:	X
DRAWN BY:	Matt Zwetzig
CHKD BY:	X
COPYRIGHT	

SHEET TITLE
3D Section

X-03
Scale AS SHOWN



207 King Street, Suite 300  
San Francisco, California 94107

Transbay Transit Center

San Francisco, California

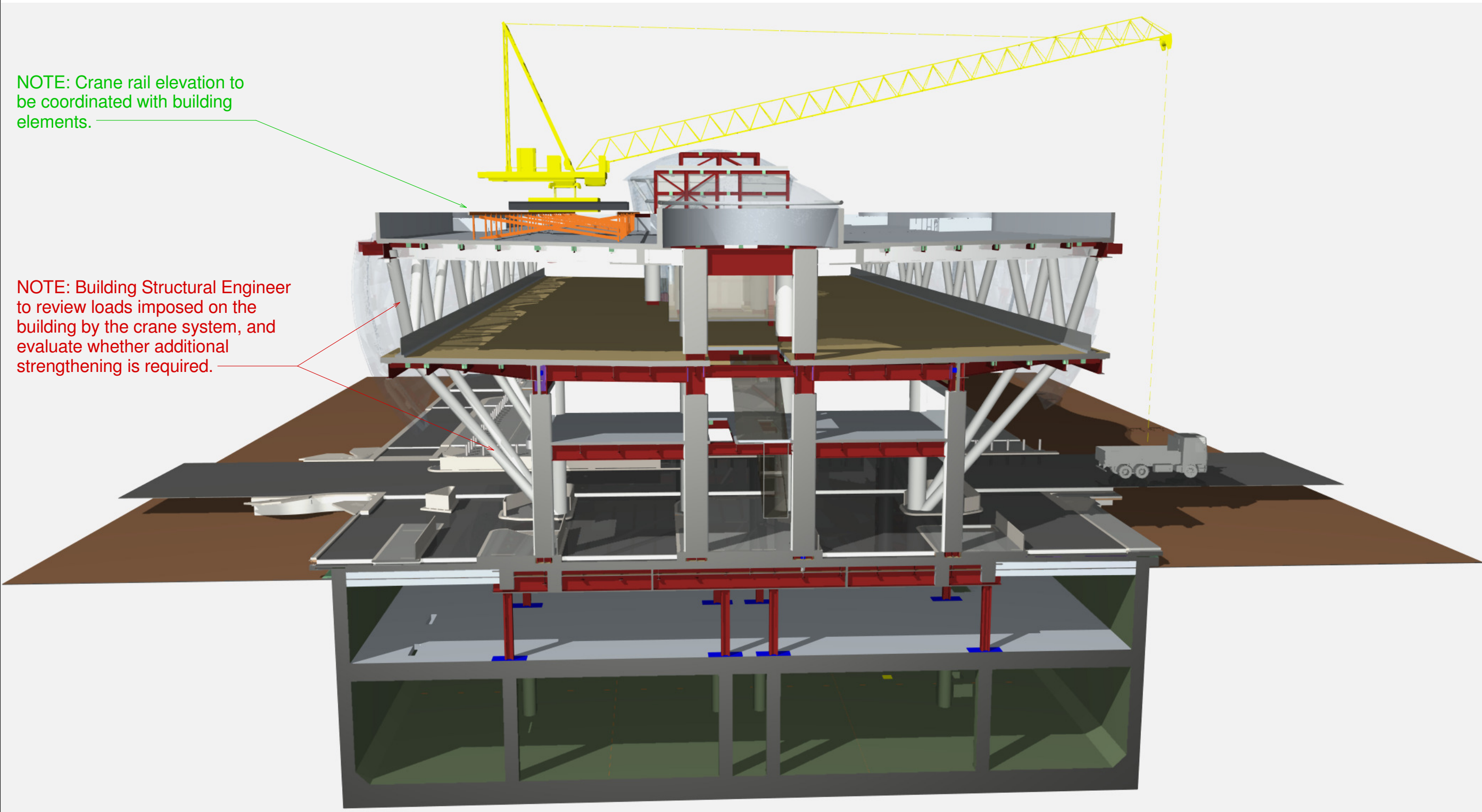
MARK	DATE	DESCRIPTION

PROJECT NO:	X
MODEL FILE:	X
DRAWN BY:	Matt Zwetzig
CHKD BY:	X
COPYRIGHT	

SHEET TITLE
3D Section

X-04
Scale AS SHOWN





NOTE: Crane rail elevation to be coordinated with building elements.

NOTE: Building Structural Engineer to review loads imposed on the building by the crane system, and evaluate whether additional strengthening is required.

Transbay Transit Center

San Francisco, California

MARK	DATE	DESCRIPTION

PROJECT NO:	X
MODEL FILE:	X
DRAWN BY:	Matt Zwetzig
CHKD BY:	X
COPYRIGHT	

SHEET TITLE
3D Section West Facing

X-05
Scale AS SHOWN

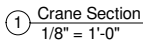


San Francisco, California

PROJECT NO:	X
MODEL FILE:	X
DRAWN BY:	Matt Zwetzig
CHK'D BY:	X
COPYRIGHT	

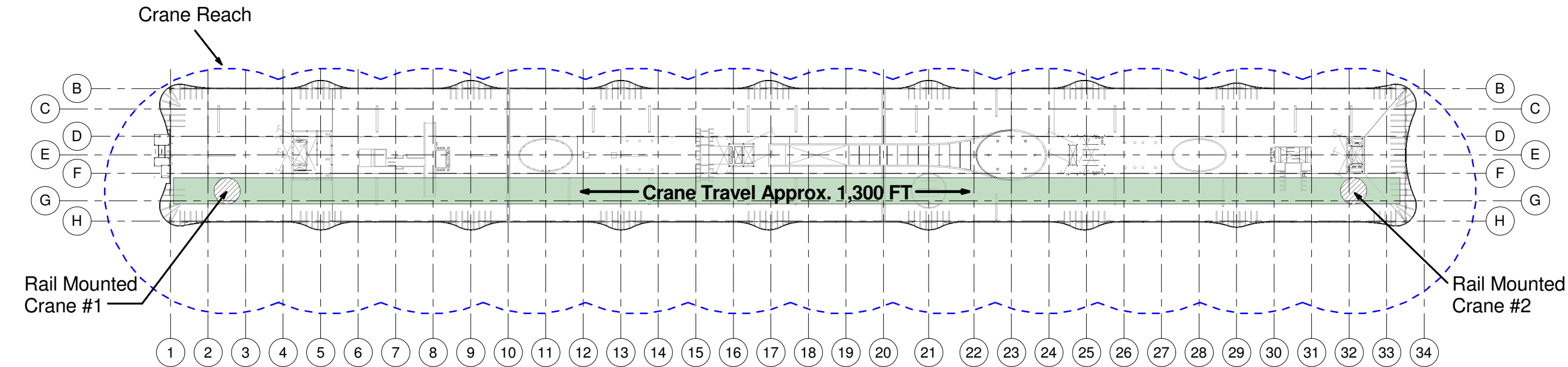
## Crane Section

Scale AS SHOWN



Transbay Transit Center

San Francisco, California



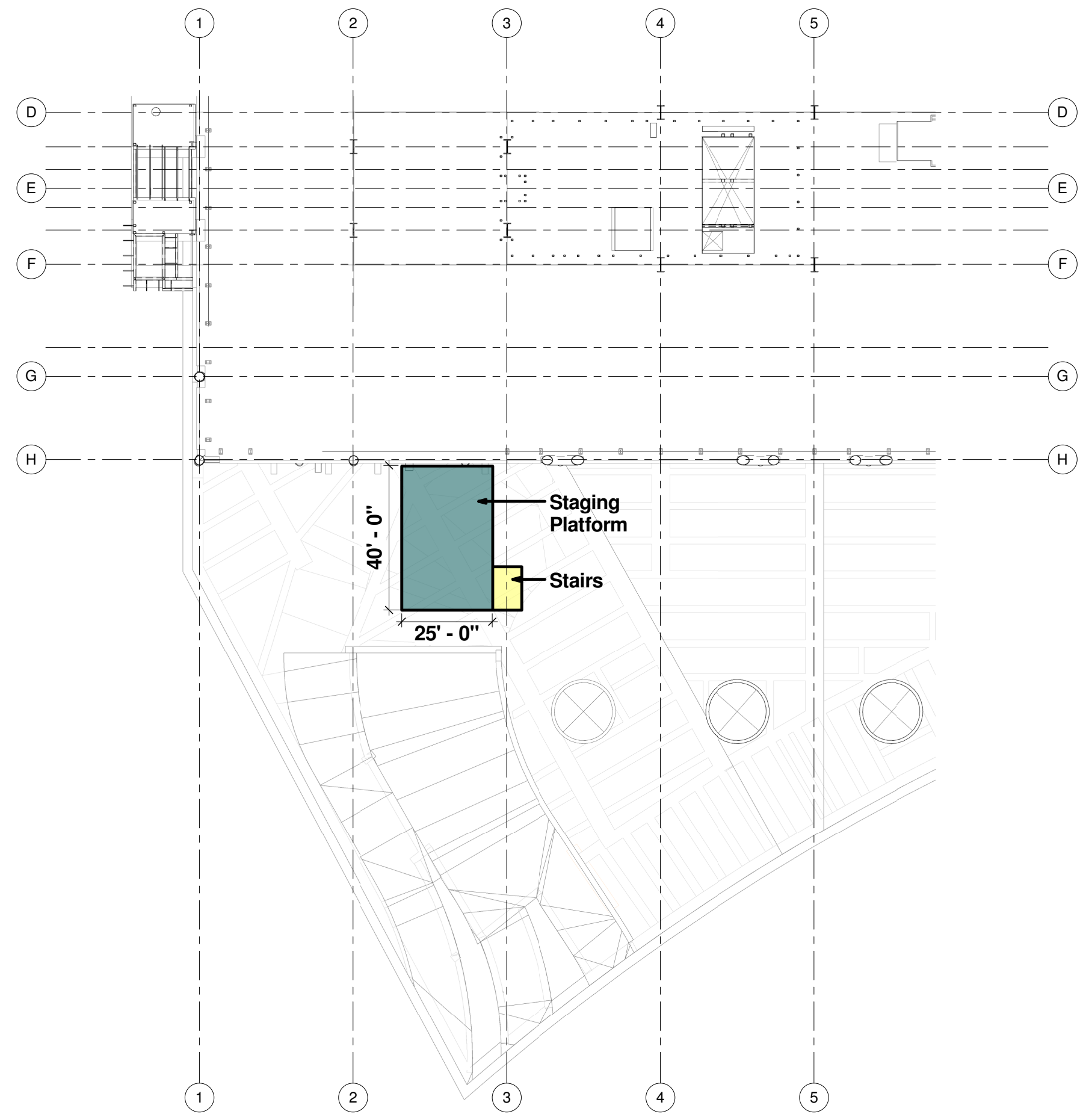
① Roof Park Level T/Steel  
1/64" = 1'-0"

MARK	DATE	DESCRIPTION

PROJECT NO:	X
MODEL FILE:	X
DRAWN BY:	Matt Zwetzig
CHK'D BY:	X
COPYRIGHT	

SHEET TITLE
Roof Rail-Mounted Cranes

X-07
Scale AS SHOWN



① Bus Deck Level T/Steel  
1/16" = 1'-0"



JOINT VENTURE

207 King Street, Suite 300  
San Francisco, California 94107

Transbay Transit Center

San Francisco, California

MARK	DATE	DESCRIPTION

PROJECT NO:	X
MODEL FILE:	X
DRAWN BY:	Matt Zwetzig
CHK'D BY:	X
COPYRIGHT	

SHEET TITLE

Staging Platform

- All distances are approximate
- Tower Crane and Rooftop Crane configuration subject to change



San Francisco, California

PROJECT NO:	X
MODEL FILE:	X
DRAWN BY:	Matt Zwetzig / Blair Hinojosa
CHK'D BY:	X
COPYRIGHT	

## Rooftop Crane and Tower Crane Logistics

Scale	AS SHOWN
-------	----------



Transbay Transit Center

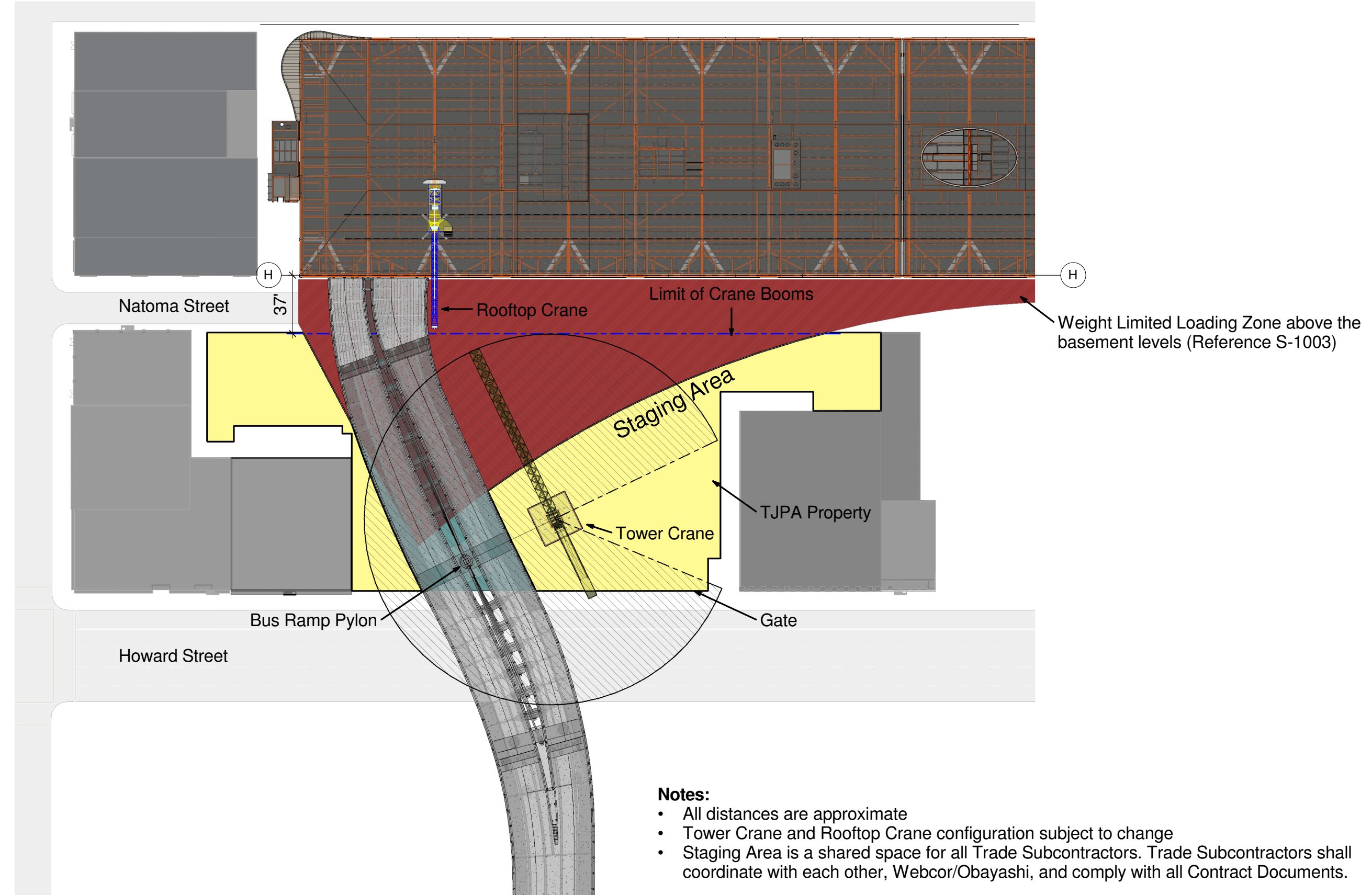
San Francisco, California

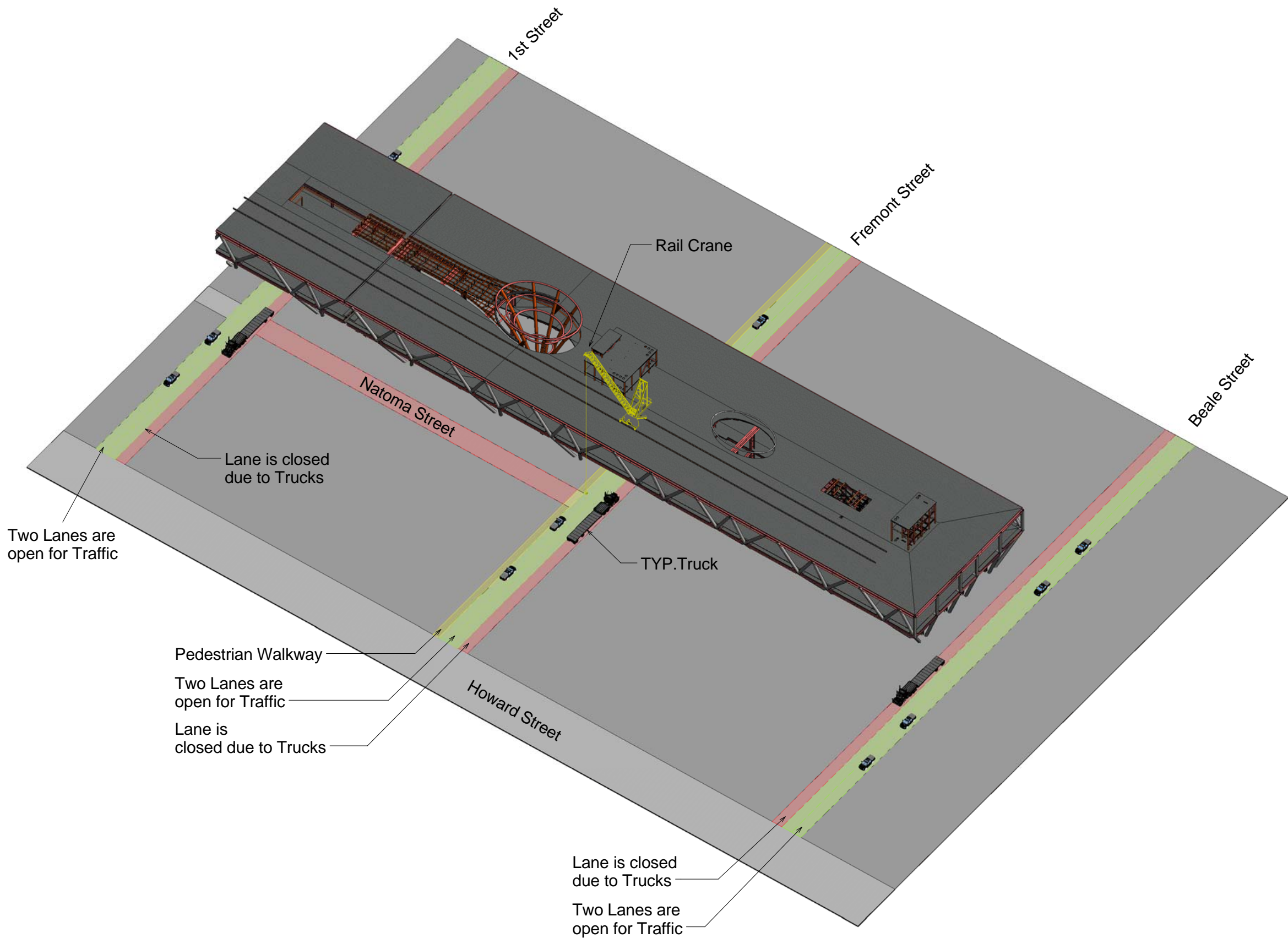
1	4/18/13	Bridge Logistics
2	4/23/13	Update
MARK	DATE	DESCRIPTION

PROJECT NO:	X
MODEL FILE:	X
DRAWN BY:	Matt Zwetzig / Blair Hinojosa
CHK'D BY:	X
COPYRIGHT	

SHEET TITLE
Natoma - Howard St. Area Logistics

X-16





207 King Street, Suite 300  
San Francisco, California 94107

Transbay Transit Center

San Francisco, California

1	4/18/13	Bridge Logistics
2	4/23/13	Update
3	12/20/13	Update

MARK	DATE	DESCRIPTION
------	------	-------------

PROJECT NO:	X
MODEL FILE:	X
DRAWN BY:	Matt Zwetzig / Blair Hinojosa / Ty M.
CHKD BY:	X
COPYRIGHT	

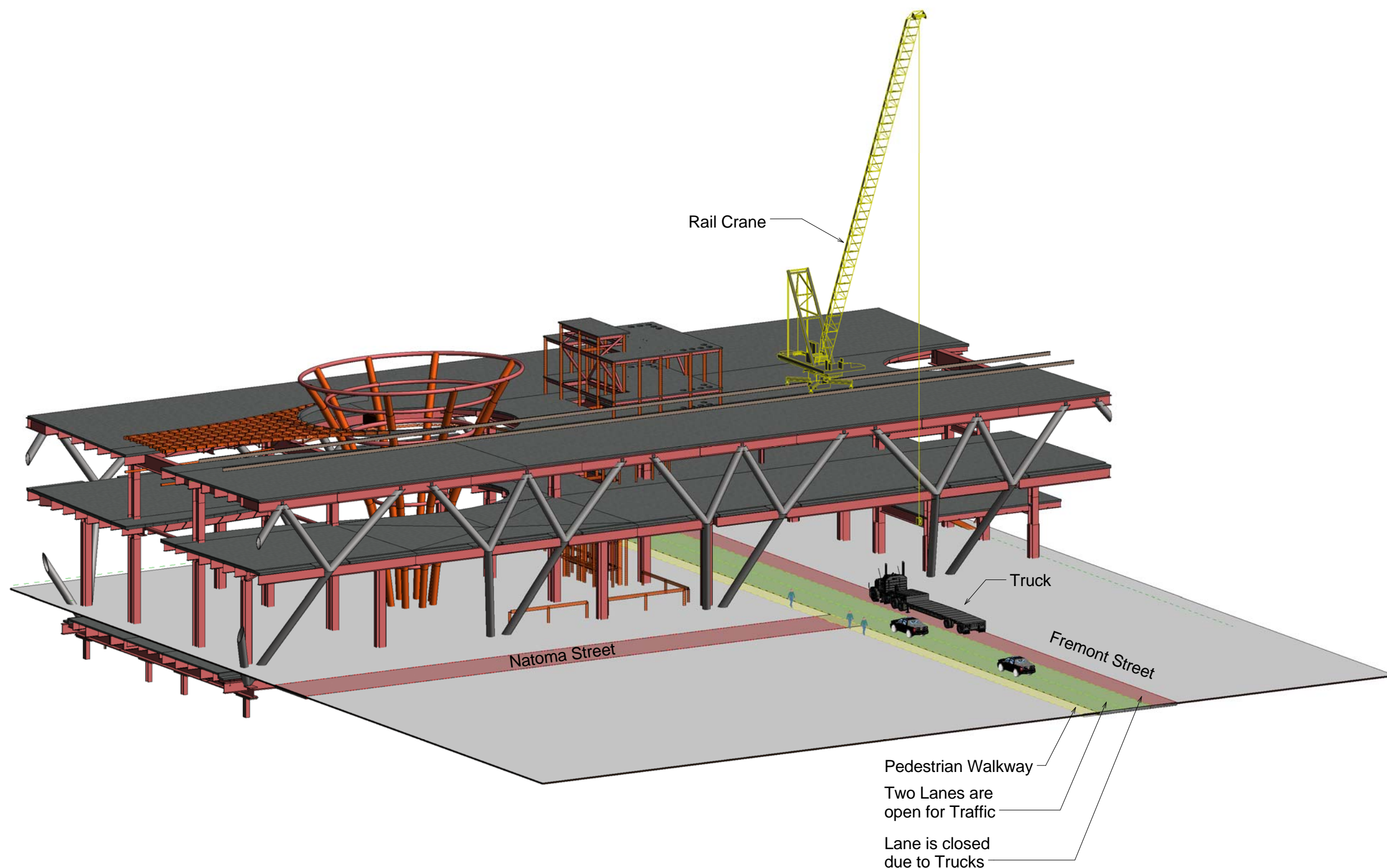
SHEET TITLE

Rail Crane  
Logistics

X-17

Scale AS SHOWN





207 King Street, Suite 300  
San Francisco, California 94107

# Transbay Transit Center

San Francisco, California

1	4/18/13	Bridge Logistics
2	4/23/13	Update
3	12/20/13	Update
MARK	DATE	DESCRIPTION

PROJECT NO:	X
MODEL FILE:	X
DRAWN BY:	Matt Zwetzig / Blair Hinojosa / Ty M.
CHKD BY:	X
COPYRIGHT	

SHEET TITLE
Rail Crane Logistics 3D Section

X-18
Scale AS SHOWN