

---

# EXHIBIT A - Trade Subcontractor Bid Package Manual and Forms – Contract #301001303

---

A...Trade Package # TG13.3 Ground  
Level Landscaping Package  
**Addendum #1**

**September 22, 2014 ...A**

---



## **Table of Contents**

I.	BIDDER QUALIFICATION PROCESS .....	2
II.	KEY DATES FOR BIDDING PROCESS.....	3
III.	COMMUNICATION WITH WEBCOR/OBAYASHI JOINT VENTURE.....	5
IV.	SCOPE OF THE PACKAGE AND BID ITEM INFORMATION .....	6
V.	CONSTRUCTION SCHEDULE.....	10
VI.	INSURANCE AND BONDING REQUIREMENTS.....	11
VII.	CONTRACT DOCUMENT LIST .....	14
VIII.	SUPPLEMENTAL DOCUMENTS LIST .....	17
ATTACHMENT 1	BID FORM AND SCHEDULE OF BID PRICES .....	1-1
ATTACHMENT 2	LOGISTICS .....	2-1

**END OF TABLE OF CONTENTS**

## **I. BIDDER QUALIFICATION PROCESS**

If the Bidder is not previously qualified, the Bidder shall submit a Request for Qualification (RFQ) package no later than the date shown in the TG13.3 Package Timeline in Section II, “Key Dates for Bidding Process.” The prequalified trade subcontractors/joint ventures listed below do not need to submit an RFQ package.

### Prequalified Trade Subcontractors/Joint Ventures:

- Columbia Stone, Inc.
- Decker Landscaping, Inc.
- Jensen Corporation Landscape Contractor
- Marina Landscape, Inc.
- Valley Crest Landscape Development, Inc.

Notification of the qualification will be provided to the Bidder by the date shown in the TG13.3 Package Timeline. Bids submitted by non-qualified Bidders will not be accepted or opened. Non-qualified Bidders assume all risk and costs associated with submitting a bid if they are deemed not qualified.

Trade Subcontractors submitting an RFQ package during the bid period must use the “Request for Qualifications (RFQ) TG13.3: Ground Level Landscaping” form available on the TJPA website (<http://transbaycenter.org/rfp/ground-level-landscaping>).

**No Conflict of Interest:** Webcor/Obayashi Joint Venture and the TJPA shall disqualify any Bidder that has a conflict of interest under Section C8.105 of the San Francisco Charter, Government Code Section 1090 *et. seq.*, the Political Reform Act (Government Code Section 87100 *et. seq.*), or any other applicable conflict of interest laws. Any false, incomplete, or otherwise unresponsive statements made in connection with a proposal may be cause for its disqualification at Webcor/Obayashi Joint Venture and the TJPA’s sole discretion.

## **END OF BIDDER QUALIFICATION PROCESS**

## II. KEY DATES FOR BIDDING PROCESS

Each Bidder shall submit its “Bid Form,” “Schedule of Bid Prices,” and other applicable sections and forms in the Specifications and the Project Bidding Manual. Required submittal documents for the bid are listed in the Bidding Checklist (BCL) in the Project Bidding Manual.

**Package Issuance:** The Bid Package, except the drawings and specifications, will be available for download from the TJPA website <http://transbaycenter.org/tjpa/doing-business-with-the-tjpa> or by contacting Webcor/Obayashi Joint Venture by e-mail at TransbayBidding\_TG13.3@webcor-obayashi.com. Information regarding how to obtain the drawings and specifications will be posted on the TJPA website with the IFB package on the Bid Package Issuance date.

**Pre-Bid Conference:** A pre-bid conference and job walk for Trade Subcontractors interested in submitting bids will be held at the time and date shown in the TG13.3 Package Timeline below, in Conference Room Charlie at the Webcor/Obayashi Joint Venture Office at 175 Beale Street, San Francisco, California 94105. Attendance is optional, but highly encouraged.

**Questions/Clarifications:** Questions or requests for clarifications regarding the Bid Package must be submitted in writing to Webcor/Obayashi Joint Venture no later than the time on the date shown in the TG13.3 Package Timeline below. Questions on Bid Documents (QBD) form in the Project Bidding Manual shall be used for questions or requests for clarifications. Refer to “Communication with Webcor/Obayashi Joint Venture” for contact information.

**Value Engineering (VE) Proposals:** Each Bidder may submit Value Engineering (VE) Proposals as deductive alternates to their Bid to the TJPA offices at 201 Mission Street, Suite 2100, San Francisco, CA, 94105 by the time and date shown in the TG13.3 Package Timeline below. The VE Proposals shall consist of two parts, technical and cost, and must be submitted in a sealed envelope. No proposals will be accepted after the due date and time. Refer to Specification Section 00 04 20 for details. The VE Proposal submissions must be signed under penalty of perjury in the manner designated at the end of the form, by an individual who has the legal authority to bind the Bidder on whose behalf that person is signing. If any information provided by a Bidder becomes inaccurate, Bidder must immediately notify Webcor/Obayashi Joint Venture and provide updated accurate information in writing, under penalty of perjury.

**Bid Submittal:** Each Bidder shall submit sealed bids to the TJPA offices at 201 Mission Street, Suite 2100, San Francisco, CA, 94105 by the time and date shown in the TG13.3 Package Timeline below. No bids will be accepted after the due date and time. Bid submissions must be signed under penalty of perjury in the manner designated at the end of the form, by an individual who has the legal authority to bind Bidder on whose behalf that person is signing. If any information provided by a Bidder becomes inaccurate, Bidder must immediately notify Webcor/Obayashi Joint Venture and provide updated accurate information in writing, under penalty of perjury.

**Sensitive Security Information/Protected Critical Infrastructure Information:** Contract Documents and reference documents for the Transbay Transit Center Project may contain protected information pertaining to sensitive, financial, commercial, or proprietary business information and/or the security of the Project. Such protected information is classified as Confidential Information, Sensitive Security Information (SSI), or Protected Critical Infrastructure Information (PCII). Bidders and Trade Subcontractors shall follow the procedures for the safeguarding of protected information specified in Specification Section 01 35 70, Document Control Procedure for Protected Information.

**A... Exhibit A – TG13.3**

**Revised & Reissued for Addendum #1**  
**September 22, 2014 ...A**



If it is necessary to discuss Confidential Information, SSI or PCII during the Pre-Bid Conference for this Trade Package, all attendees will be required to have been granted conditional access to the associated documents. In order to be granted conditional access, all attendees must have submitted a signed Non-Disclosure Agreement (NDA) to the TJPA, and been approved prior to the Pre-Bid Conference.

**Financial Responsibility:** Webcor/Obayashi Joint Venture and the TJPA accept no financial responsibility for any costs incurred by a firm in responding to this Bid Package. Submissions to Webcor/Obayashi Joint Venture will become the property of the TJPA and may be used by the TJPA in any way deemed appropriate.

**No Waiver:** No waiver by Webcor/Obayashi Joint Venture and the TJPA of any provision of this Bid Package shall be implied from any failure by Webcor/Obayashi Joint Venture and the TJPA to recognize or take action on account of any failure by a Bidder to observe any provision of this Bid Package.

**No Representations or Warranties:** The information presented in this Bid Package and in any report or other information provided by Webcor/Obayashi Joint Venture and the TJPA to Bidders is provided solely for their convenience. It is the sole responsibility of Bidders to assure themselves that the information contained in this Bid Package and other documents are accurate and complete. No representations, assurances or warranties pertaining to the accuracy of such information are or will be provided by the TJPA or its advisors.

**Package Timeline:**

Bid Package Issued:	September 16, 2014
Pre-Bid Conference:	October 15 2014 (2:00 p.m.)
Qualifications Due (for non-prequalified):	October 16, 2014 (2:00 p.m.)
Notification of Qualification (for non-prequalified):	October 23, 2014
Questions/Clarifications (QBD) Due:	October 23, 2014 (2:00 p.m.)
Pre-bid Request for Substitution Due:	October 23, 2014 (2:00 p.m.)
Value Engineering (VE) Proposals Due:	October 28, 2014 (2:00 p.m.)
VE Proposals Review:	October 29, 2014 – November 10, 2014
Bid Package Due:	November 12, 2014 (2:00 p.m.)
Public Bid Opening:	November 12, 2014 (2:00 p.m.)
Protest Period:	November 12, 2014 (2:00 p.m.) – November 19, 2014 (2:00 p.m.)
Notification of Intention to Award Contract	November 20, 2014
TJPA Board Vote to Approve the Contract Award:	December 11, 2014

**END OF KEY DATES FOR BIDDING PROCESS**

**A... Exhibit A – TG13.3**

**Revised & Reissued for Addendum #1**  
**September 22, 2014 ...A**

### **III. COMMUNICATION WITH WEBCOR/OBAYASHI JOINT VENTURE**

At no time during the bid process (defined as the time between issuance of this IFB until issuance of the Notice of Intent to Award Contract) shall Bidders contact any person(s) or staff of the TJPA, TJPA Program Management/Program Controls (PMPC) team, Webcor/Obayashi Joint Venture, CM Oversight (CMO), James Carpenter Design Associates, Inc. (Artist) or other TJPA Consultants regarding this IFB. The only contact is for submission of questions using the contact directions below.

Submit questions using the Question on Bid Documents (QBD) form through Webcor/Obayashi Joint Venture. See the Project Bidding Manual for QBD form.

E-mail the completed QBD form to Webcor/Obayashi Joint Venture at  
TransbayBidding\_TG13.3@webcor-obayashi.com.

### **END OF COMMUNICATION WITH WEBCOR/OBAYASHI JOINT VENTURE**

#### **IV. SCOPE OF THE PACKAGE AND BID ITEM INFORMATION**

##### **TG13.3 Ground Level Landscaping:**

##### **1. Package Scope Summary**

The scope of work for the TG13.3 Ground Level Landscaping is described in the Contract Documents. Scope of work includes all labor, materials, equipment, tools, transportation, disposal fees, incidentals and any other costs/fees necessary to complete the work in accordance with the Contract Documents. All necessary work from mobilization to handover to the next Trade Subcontractor shall be included in the Bid.

The major items of work for this Trade Package will consist of the following elements:

- Ground Level Irrigation & Planting
- Planters
- Area Trench Drains (see list of excluded areas)
- Shaw Alley Art Installation
- Paving Material

The Estimated Value of this Trade Package is approximately \$950,000.

Trade Subcontractor is required to review the Contract Documents and be familiar with existing Site Conditions in accordance with all requirements set forth in the Prime Contract with respect to its scope of work (see Specification Section 00 07 00 – General Conditions, Article 3.03). This shall include, without limitation, the obligation to carefully review the appropriate portions of the Contract Documents a minimum of 35 days in advance of the work to be executed for the express purpose of checking for any manifest errors, omissions, discrepancies or ambiguities and notifying Webcor/Obayashi Joint Venture in writing promptly within this time period upon discovery of errors, omissions, discrepancies or ambiguities so that Webcor/Obayashi Joint Venture can properly notify the TJPA within the time period prescribed in Specification Section 00 07 00 – General Conditions, Article 3.03.C.

In addition, if Trade Subcontractor performs work that it knows, or reasonably should have known, to be contrary to the Building Code or other applicable laws, statutes, ordinances, rules and regulations without written notice to Webcor/Obayashi Joint Venture, Trade Subcontractor shall assume responsibility for such work and shall bear all costs of correction (see Specification Section 00 07 00 – General Conditions, Article 3.08.E).

##### **2. General Work**

All necessary general work shall be included in this package. As needed by Trade Subcontractor, the general work shall include, but shall not be limited to, site preparation, site safety, crane/rescue baskets, temporary lighting for night work, temporary task lighting for traffic/pedestrians, painted temporary barricades for overhead protection including lighting and signage, weather mitigation, surveying, clean-up, dump permits and fees, and small tools and equipment specific for this work package. Refer to Section IV, “Trade Subcontractor Requirements” in the Project Bidding Manual and the Contract Documents for more information.

This Trade Subcontractor is responsible for protection of adjacent properties, mitigation measures and monitoring, as specified in the Contract Documents.

A... Exhibit A – TG13.3

Revised & Reissued for Addendum #1  
September 22, 2014 ...A

This Trade Subcontractor's cost of the general work, overhead, office cost, applicable permits/legal fees, administration, bid bonds, insurances, contingency, profit and other necessary activities for this project shall be included in the bid amount and shall be distributed into the Bid Items.

The following items for this package are discussed in detail in the Project Bidding Manual. Additional requirements and/or clarifications that are specific to the current Trade Subcontractor Bid Package are included below and align, as indicated, with the corresponding section of the Project Bidding Manual.

### III. Instructions to Bidders

#### E. Additional Bidding Notes

##### 2. Exclusions/Clarifications/Qualifications

###### a) Do not include in Bid Price:

1. Project ID Signs called for in Specification Section 01 15 01.

### IV. Trade Subcontractor Requirements

#### A. General Information – Supplemental Instructions

##### 7. Inspections and Testing

- g) Provide onsite testing in accordance with Specification Section 03 33 13-2 C

A...

##### 25. Cranes/Hoisting

- b) **Rooftop Cranes will not be available until approximately the third quarter of 2015 through the second quarter of 2017. Rooftop crane usage for all activities, including but not limited to, unloading deliveries, loading materials and equipment into the building, use in erection or placement of work shall be scheduled in coordination with Webcor/Obayashi Joint Venture. Crane time is not guaranteed until it is scheduled. All work performed outside of rooftop crane availability is the responsibility of the Trade Subcontractor.**

...A

#### D. Small Business Enterprise (SBE) Program

The SBE utilization goal for this Trade Subcontractor is 5% of the total value of this Trade Subcontractor's bid value.

### 3. Base Bid Item Scope

#### Ground Level Landscaping Package Scope of Work

This section is supplemental information only to the Contract Documents used to describe how the bid pricing is to be broken down and to generally describe the scope of the work defined in the Contract Documents. All necessary work from mobilization to handover to the next Trade Subcontractor shall be included in the bid items.

The amount paid for all of the items below shall include full compensation for furnishing all labor, materials, equipment, installation, welding, tools, transportation, disposal fees, incidentals, all patch work

A... Exhibit A – TG13.3

Revised & Reissued for Addendum #1

September 22, 2014 ...A

including multiple mobilization/demobilizations as required, and any other costs/fees necessary to complete this work.

**Ground Level Landscaping Primary Specifications –**

01 10 30/APE Schedule of Alt Main Package  
03 10 01 Concrete Formwork  
03 20 01 Concrete Reinforcing  
03 33 00 Cast-in-place Architectural Concrete  
03 33 12 Landscape Cast-in-place Concrete  
03 33 13 Shaw Alley Art Installation Paving  
03 45 00 Site Precast Concrete Elements  
07 92 14 Site Sealants  
07 95 13 Expansion Joints  
12 93 40 Shaw Alley Site Art Installation  
32 11 24 Landscape Aggregate Base Course  
32 14 40 Sand-set Stone Paving  
32 14 41 Mortar-set Stone Paving  
32 11 16 Sub Base Course  
32 84 00 Planting Irrigation  
32 91 00 Planting Soil Mixes Preparation  
32 91 20 Wetland Planting Medium  
32 91 30 Planting Area Finish Grading  
32 92 10 Contract Growing and Maintenance  
32 93 00 Planting Materials  
33 41 19 Landscape Drainage

**Ground Level Landscaping Detailed Scope of Work**

1. Layout, fabricate, form, place and finish concrete footings for planters, including rebar, as indicated by detail 1/L1-7303.
2. Furnish and install planters. Waterproofing will be installed by the TG13.2 Trade Subcontractor. If this Trade Subcontractor damages the waterproofing it will be repaired by TG13.2 Trade Subcontractor and paid for by this Trade Subcontractor.
3. Furnish and install all conduit for irrigation control wires that pass under or through paving, curbs, walls or structures at the ground level.
4. Furnish area drain (trench drain) between gridlines J & K and 1-9. Area drains to be installed by others. See detail sheet L1-2302 for an example.
5. Furnish and install irrigation supply lines, master control valves, rain sensor interrupt device, including drip lines, and flush valves for a complete assembly of all ground level landscaping areas. See detail sheet L1-3302 for an example.
6. Furnish and install drainage piping as indicated for all ground level landscaping outside train box. Include cleanouts and catch basins, as shown, from the inside of the back of curb. See detail sheet L1-6322 for an example.
7. Furnish and install, sand drainage layer, organic subsoil mixture, planting bed as indicated in drawings. See detail sheet L1-7303 for an example.
8. Provide protection for all of this Trade Subcontractor's work until final acceptance by owner.

**Shaw Alley Art**

1. Layout, install, and connect drainage piping as shown on detail sheet L1-7332 for Shaw Alley Art. TG10.2 Trade Subcontractor will supply drains in structural concrete. TG13.2 Trade Subcontractor will provide all waterproofing. TG07.2 Trade Subcontractor will install the protection slab.
2. Furnish and install trench drain(s) as shown at Shaw Alley Art, as indicated on detail sheet L1-7336.
3. Furnish and install Geosynthetic fill over protection slab.
4. Form, place and finish architectural concrete paving including installation of Lithocrete Quarried Stone™.
5. Design, fabricate, and install illuminated pavers as shown on detail sheet L1-7331.
6. Design, fabricate and install illuminated benches, as shown on detail sheet L1-7331.
7. Provide all mockup(s) as required in specifications.
8. Electrical power pathway and conductors are provided by TG10.4 Trade Subcontractor. All connections to the illuminated paving and benches are by this Trade Subcontractor. Coordinate all electrical work at Shaw Alley with TG10.4 Trade Subcontractor.
9. Provide all protection for all of this Trade Subcontractor's work until final acceptance by owner.

### **Alternates**

This category includes all alternates to be priced as described in Specification Section 01 10 30/APE for this trade package. Alternates listed above the "Total Base Bid Price" on the Schedule of Bid Prices are considered "above the line" Alternates. Above the line Alternate costs will be part of the "Total Base Bid Price" and will be used as a basis of award. Alternates listed below the "Total Base Bid Price" on the Schedule of Bid Prices are considered "below the line" Alternates. Below the line Alternate costs will not be part of the "Total Base Bid Price" and will not be used as basis of award. Trade Subcontractor shall furnish a cost for all Alternates; failure to do so shall render the Bid non-responsive.

#### **1. Below the line Alternates:**

- a. **Additive Specification Alternate #35**  
Provide pricing as described in Schedule of Alternates E.1.23.
- b. **Additive Specification Alternate #36**  
Provide pricing as described in Schedule of Alternates E.1.24.

**END OF SCOPE OF THE PACKAGE AND BID ITEM INFORMATION**

**V. CONSTRUCTION SCHEDULE**

Refer to Project Bidding Manual Rev. 26, Section IV.C for Construction Schedule.

**END OF CONSTRUCTION SCHEDULE**

## **VI. INSURANCE AND BONDING REQUIREMENTS**

The insurance requirements outlined below supersede the related requirements in Specification Section 00 08 05 and Section 16 of the Long Form Subcontract.

### **1. TRADE SUBCONTRACTOR'S LIABILITY INSURANCE**

Trade Subcontractor shall maintain in full force and effect, for the period covered by the subcontract, the following liability insurance with the following minimum specified coverage or coverage as required by laws and regulations, whichever is greater:

- A. Workers' Compensation in the statutory amount, including Employers' Liability coverage with limits not less than \$1,000,000 each accident, injury, or illness, and coverage for Federal Employers Liability Act.
- B. Commercial General Liability insurance with limits not less than \$1,000,000 each occurrence combined single limit for bodily injury and property damage, including coverage for Contractual Liability, Independent Contractors, Explosion, Collapse, and Underground (XCU), Personal Injury, Broadform Property Damages, and completed operations. The required limit may be satisfied through a combination of primary commercial general liability and excess liability policies. Notwithstanding Section 16.7 of the Long Form Subcontract, the requirement to maintain \$1,000,000 in Commercial General Liability Insurance shall apply ONLY to Trade Subcontractor. Trade Subcontractor's subcontractors and/or lower-tier subcontractors shall maintain the levels of Commercial General Liability Insurance set forth in Section 16 of the Long Form Subcontract agreement.
- C. Commercial Automobile Liability insurance with limits not less than \$1,000,000 each occurrence combined single limit for bodily injury and property damage, including owned, hired or non-owned vehicles, as applicable.

### **2. ADDITIONAL COVERAGES**

- A. In the event that Trade Subcontractor employs professional land surveyor(s) for performing field engineering, Trade Subcontractor shall have evidence of or shall require its retained engineers to have evidence of \$1,000,000 in professional liability insurance covering that scope of work, consistent with the standard requirements set forth in Article 16 of the Long Form Subcontract.

### **3. INSURANCE FOR OTHERS**

For general liability and automobile liability Trade Subcontractor shall include as additional insured the Contractor (Webcor/Obayashi Joint Venture), TJPA, its board members, and all authorized agents and representatives, and members, directors, officers, trustees, agents and employees of any of them.



#### **4. FORMS OF POLICIES AND OTHER INSURANCE REQUIREMENTS**

- A. Workers' Compensation Insurance shall be submitted to the Contractor before the commencement of any of the Work on Site.
- B. Before commencement of the work of this subcontract, certificates of insurance in form and with insurers acceptable to Contractor, evidencing all required insurance and with proper endorsements from Trade Subcontractor's insurance carrier identifying as additional insured the parties indicated under paragraph 3 above, shall be furnished to Contractor with complete copies of policies in accordance with the Project Bidding Manual.
- C. Approval of the insurance by the Contractor shall not relieve or decrease the extent to which Trade Subcontractor or subcontractors of any tier may be held responsible for payment of any and all damages resulting from its operations. All policies of insurance and certificates shall be satisfactory to Contractor.
- D. Trade Subcontractor and its subcontractors shall comply with the provisions of California Labor Code Section 3700. Prior to commencing the performance of work, Trade Subcontractor and all of its subcontractors shall submit to the Contractor a certificate of insurance evidencing liability for workers compensation or proof of self-insurance in accordance with the provisions of the California Labor Code.
- E. Liability insurance, except for professional liability insurance, shall be on an occurrence basis, and said insurance shall provide that the coverage afforded thereby shall be primary coverage (and non-contributory to any other existing valid and collectable insurance) to the full limit of liability stated in the declaration, and such insurance shall apply separately to each insured against whom claim is made or suit is brought, but the inclusion of more than one insured shall not operate to increase the insurer's limits of liability.
- F. Trade Subcontractor shall maintain professional liability coverage continuously throughout the term of this subcontract, and without lapse, for a period three years beyond the Contract Final Completion date to the effect that should occurrences during the Contract term give rise to claims made after expiration of the Contract, such claims shall be covered by such claims-made policies.
- G. Each such policy shall provide that no cancellation or non-renewal shall occur without the carrier giving to Contractor at least 30 days written notice prior thereto.

All notices shall be made to:

Webcor / Obayashi Joint Venture  
1751 Harbor Bay Parkway, Suite 200  
Alameda, CA 94502

- H. Trade Subcontractor, upon notification of receipt by Contractor of any such notice, shall provide Contractor a certificate of the required new or renewed policy at least 10 days

before the effective date of such cancellation, change or expiration, with a complete copy of new or renewed policy, if requested.

- I. If, at any time during the life of this subcontract, Trade Subcontractor fails to maintain any item of the required insurance in full force and effect, all work of this subcontract may, at Contractor's sole option, be discontinued immediately, and all subcontract payments due or that become due will be withheld until notice is received by the Contractor as provided in the immediately preceding Paragraph 4.G that such insurance has been restored to full force and effect and that the premiums thereof have been paid for a period satisfactory to the Contractor.
- J. Any failure to maintain any item of the required insurance may, at Contractor's sole option, be sufficient cause for termination for default of this subcontract.

## **5. QUALIFICATIONS**

Trade Subcontractor must provide coverage from insurance companies who shall be legally authorized to engage in the business of furnishing insurance in the State of California. All insurance companies shall have a current A.M. Best Rating not less than "A-, VIII" and shall be satisfactory to Contractor.

## **6. SUBGUARD AND BONDING**

- A. Trade Subcontractor is required to provide a Bid Bond for 5% of the total contract value.
- B. Trade Subcontractor is not required to provide a Payment and Performance Bond. Subguard will be used in lieu of a Payment and Performance Bond.
- C. Trade Subcontractor shall provide all documentation required by Subguard Surety to verify qualification for program.

## **END OF INSURANCE REQUIREMENTS**

## VII. CONTRACT DOCUMENT LIST

The Contract Documents for this Trade Package include the following:

A...

<b>Document Name</b>	<b>Description</b>	<b>Revision Name</b>	<b>Issue Date</b>
Long Form Subcontract		Rev. 0	2014-09-16
Specification Division 00 and Division 01	Division 00 and Division 01 defined in Specification Section 00 01 10		2014-08-11
Technical Specifications	IFC Main Package	Field Order No. T-00027 – Main Package IFC	2014-03-31
<b>Technical Specifications</b>	<b>SFPUC IFB ES Drawings</b>	<b>Field Order # T-00029</b>	<b>2014-06-19</b>
Technical Specifications	MEP/TE/SE/VT Addendum #3	CR No. T-111 ASI #117	2014-06-27
Technical Specifications	MEP/TE/SE/VT Addendum #4	CR No. T-112 ASI #118	2014-06-30
Technical Specifications	VE Round 2 + VE in MEP/TE/SE/VT IFB Add 4	CR No. T-113 ASI #119	2014-07-02
Technical Specifications	TG08.2, TG08.7 and TG0810	CR No. T-115 ASI #120	2014-07-11
Technical Specifications	MEP/TE/SE/VT IFB Addendum #5	CR No. T-119 ASI #121	2014-07-18
Technical Specifications	VE Round 3	CR No. T-121 ASI #122	2014-07-23
Technical Specifications	Civil/Utilities and RFI Responses	CR No. T-122 ASI #123	2014-08-06
Technical Specifications	VE Round 4	CR NO. T-123 ASI #124	2014-08-18
Technical Specifications	TG10.4 Electrical	CR NO. T-124 ASI #125	2014-08-19
Technical Specifications	TG08.10 – Glass Curtain Wall (W-2, W-3, W-4, W-6, W-8)	CR No. T-125 ASI #126	2014-08-22
<b>Technical Specifications</b>	<b>TG12.2 – OCS</b>	<b>Field Order # T-00033</b>	<b>2014-09-10</b>
<b>Technical Specifications</b>	<b>Bidding Clarifications and RFI Responses</b>	<b>CR No. T-126 ASI #127</b>	<b>2014-09-12</b>
<b>Technical Specifications</b>	<b>SFPUC IFB ES Drawings Revision 1</b>	<b>Field Order # T-00029R1</b>	<b>2014-09-16</b>
Drawings	IFC Main Package	Field Order No. T-00027 – Main Package IFC	2014-03-31

A... Exhibit A – TG13.3

Revised & Reissued for Addendum #1  
September 22, 2014 ...A

<b>Document Name</b>	<b>Description</b>	<b>Revision Name</b>	<b>Issue Date</b>
<b>Drawings</b>	<b>SFPUC IFB ES Drawings</b>	<b>Field Order # T-00029</b>	<b>2014-06-19</b>
Drawings	MEP/TE/SE/VT Addendum #3	CR No. T-111 ASI #117	2014-06-27
Drawings	MEP/TE/SE/VT Addendum #4	CR No. T-112 ASI #118	2014-06-30
Drawings	VE Round 2 + VE in MEP/TE/SE/VT IFB Add 4	CR No. T-113 ASI #119	2014-07-02
Drawings	TG08.2, TG08.7 and TG0810	CR No. T-115 ASI #120	2014-07-11
Drawings	MEP/TE/SE/VT IFB Addendum #5	CR No. T-119 ASI #121	2014-07-18
Drawings	VE Round 3	CR No. T-121 ASI #122	2014-07-23
Drawings	Civil/Utilities and RFI Responses	CR No. T-122 ASI #123	2014-08-06
Drawings	VE Round 4	CR NO. T-123 ASI #124	2014-08-18
Drawings	TG10.4 Electrical	CR NO. T-124 ASI #125	2014-08-19
Drawings	TG08.10 – Glass Curtain Wall (W-2, W-3, W-4, W-6, W-8)	CR No. T-125 ASI #126	2014-08-22
<b>Drawings</b>	<b>TG12.2 – OCS</b>	<b>Field Order # T-00033</b>	<b>2014-09-10</b>
<b>Drawings</b>	<b>Bidding Clarifications and RFI Responses</b>	<b>CR No. T-126 ASI #127</b>	<b>2014-09-12</b>
<b>Drawings</b>	<b>SFPUC IFB ES Drawings Revision 1</b>	<b>Field Order # T-00029R1</b>	<b>2014-09-16</b>
3D Models	Refer to the following file sharing website: <a href="https://webcor.box.com/s/st43wnq91t2t8d0n0gvj">https://webcor.box.com/s/st43wnq91t2t8d0n0gvj</a> Password: WebcorBid!	CR No. T-123 ASI # 124	2014-08-18
3D Models	Refer to the following file sharing website: <a href="https://webcor.box.com/s/48xt4b9l3ky4ukw494n6">https://webcor.box.com/s/48xt4b9l3ky4ukw494n6</a> Password: WebcorBid!	CR No. T-126 ASI #127	2014-09-12
<b>RFIs</b>	<b>Preconstruction RFIs (P1-0001 – P1-0459) Refer to the following link:</b> <a href="https://webcor.box.com/s/y6j9sumu82ho7n5b728i">https://webcor.box.com/s/y6j9sumu82ho7n5b728i</a>		<b>2014-09-15</b>
Project Bidding Manual		Rev. 26	2014-08-12

<u>Exhibit A</u>	<u>Trade Subcontractor Bid Package Manual and Forms – Contract #301001303</u>	Rev. 0 A	<del>2014-09-16</del> <b>2014-09-22</b>
Exhibit B	Warranty		2010-09
Exhibit C	Lien Releases	Rev. 07/2012	2012-08-22
Exhibit D	Sample Certificate of Insurance and Additional Insured Endorsement		
Exhibit E	LEED Subcontractor Submission Letter and Data Sheet	Rev. 3	2014-03-13
Exhibit G	Subcontractor Payment Requisition		2012-04-03
Exhibit H	Site Specific Safety Plan	Rev. 9	2014-07-10
Exhibit I	Schedule	Rev. 0	2014-09-15
Exhibit J	Contractor Quality Control Plan	Rev. 10	2013-11-04
Exhibit K	Sediment and Erosion Control Plan		2011-02
Exhibit L	Hazardous Materials Management Plan	Rev. 1	2011-03-11
Exhibit M	RFI Q&A Log		2014-09-15
Exhibit N	Noise & Vibration Mitigation Management Plan	Rev. 4	2012-09-07
Exhibit O	Air Quality Management Plan	Rev. 5	2012-01-16
Exhibit P	Construction Waste Management Plan	Rev. 6	2013-11-07
Exhibit Q	Apprenticeship Program	Rev. 0	2012-03-23
Exhibit R	Survey Information	Rev. 0	2012-03-23
Exhibit S	Traffic Control Plan	Rev. 2	2012-08-22
Exhibit U	Submittal Schedule	Rev. 0	2013-11-07
Exhibit W	Waterproofing		2011-05

...A

# END OF CONTRACT DOCUMENT LIST

## VIII. SUPPLEMENTAL DOCUMENTS LIST

This Trade Subcontractor shall review all of the supplemental documents listed below, which have been determined to be related to this Trade Package scope of work, and be familiar with all conditions affecting this Trade Subcontractor's scope of work. All associated costs due to the conditions and plans of the reference documents including all coordination shall be included in the Bid Amount.

Scoping Drawings are for use in clarifying the general scope of work, but are not all inclusive of the scope described. If a conflict or omission exists within the Scoping Documents and/or the Detailed Scope of Work, the written scope shall govern.

**A...**

~~Preconstruction RFI's shall be regularly updated to ensure current information is available to all bidders.~~  
**Preconstruction RFI's have been relocated to Section VII. "Contract Documents List".**

The Supplemental Documents for TG13.3 Ground Level Landscaping are listed below and are currently available through Webcor/Obayashi Joint Venture's FTP website:

Document Type	Document Name	Revision Date
Scoping Drawing	L1-2302 Ground Level Zone 02 Material Plan Phase 1	09-16-2014
Scoping Drawing	L1-2303 Ground Level Zone 03 Material Plan Phase 1	09-16-2014
Scoping Drawing	L1-2304A Ground Level Zone 04 Material Plan Phase 1	09-16-2014
Scoping Drawing	L1-2305A Ground Level Zone 05 Material Plan Phase 1	09-16-2014
Scoping Drawing	L1-2306A Ground Level Zone 06 Material Plan Phase 1	09-16-2014
Scoping Drawing	L1-2333 Ground Level Material Enlargement Plan Phase 1	09-16-2014
Scoping Drawing	L1-3302 Ground Level Zone 02 Grading and Drainage Plan Phase 1	09-16-2014
Scoping Drawing	L1-3303 Ground Level Zone 03 Grading and Drainage Plan Phase 1	09-16-2014
Scoping Drawing	L1-6222 Ground Level Zone 02 Irrigation Plan Phase 1	09-16-2014
Scoping Drawing	L1-6223 Ground Level Zone 03 Irrigation Plan Phase 1	09-16-2014
Scoping Drawing	L1-7301 Ground Level Details Precast Planters	09-16-2014

**A... Exhibit A – TG13.3**

**Revised & Reissued for Addendum #1  
September 22, 2014 ...A**

Scoping Drawing	L1-7302 Ground Level Details Precast Planters	09-16-2014
Scoping Drawing	L1-7303 Ground Level Details Precast Planters	09-16-2014
Scoping Drawing	L1-7318 Ground Level Details Subslab and Footings	09-16-2014
Scoping Drawing	L1-7330 Ground Level Details Shaw Alley Art Installation	09-16-2014
Scoping Drawing	L1-7331 Ground Level Details Shaw Alley Art Installation	09-16-2014
Scoping Drawing	L1-7332 Ground Level Details Shaw Alley Art Installation	09-16-2014
Scoping Drawing	L1-7333 Ground Level Details Shaw Alley Art Installation	09-16-2014
Scoping Drawing	L1-7334 Ground Level Details Shaw Alley Art Installation	09-16-2014
Scoping Drawing	L1-7335 Ground Level Details Shaw Alley Art Installation	09-16-2014
Scoping Drawing	L1-7336 Ground Level Details Shaw Alley Art Installation	09-16-2014
Scoping Drawing	L1-7340 Ground Level Details Shaw Alley Art Installation	09-16-2014
Scoping Drawing	L1-7341 Ground Level Details Shaw Alley Art Installation	09-16-2014
Scoping Drawing	L1-7343 Ground Level Details Shaw Alley Art Installation	09-16-2014
Scoping Drawing	L1-7344 Ground Level Details Shaw Alley Art Installation	09-16-2014
Scoping Drawing	L1-7381 Ground Level Details Drainage	09-16-2014
<del>Supplemental Document</del>	<del>Preconstruction RFI's</del>	<del>08-28-2014</del>

Trade Subcontractor is responsible for reviewing and coordinating its work with all supplementary information provided.

The Supplementary Documents are available for download on the following FTP website:

TG13.3 - <https://webcor.box.com/s/9b87nv4x31pyambrlp4b>

**DELETED** Preconstruction RFI's - <https://webcor.box.com/s/y6j9sumu82ho7n5b728i>

...A

Password: WebcorBid!

**END OF SUPPLEMENTAL DOCUMENTS LIST**



**ATTACHMENT 1 BID FORM AND SCHEDULE OF BID PRICES**

TO THE TJPA EXECUTIVE DIRECTOR

In response to the Advertisement for Bids for the following public work:

**TG13.3 – Ground Level Landscaping**

The undersigned Bidder hereby proposes and agrees to execute the required contract, shall it be awarded to said Bidder, and to do all the work and furnish all the materials therefor, all in accordance with the Specifications and Drawings referred to in said Advertisement for Bids and at the prices named in the attached Schedule of Bid Prices.

The undersigned declares: That it is the Bidder (or by holding the position below indicated is authorized to execute this Bid Form on behalf of the Bidder); that said Bidder submits this Bid; that said Bidder has not, nor have any of its agents, officers, representatives or employees, been guilty of collusion with any officer or representative of Webcor/Obayashi Joint Venture or the TJPA, or with any other party or parties in the submission of this Bid; nor has said Bidder received any preferential treatment by any officer or employee of Webcor/Obayashi Joint Venture or the TJPA in the making or submitting of this Bid. The undersigned declares under penalty of perjury that all representations made on this Bid Form are true and correct.

Executed on \_\_\_\_\_ 20 \_\_\_\_\_

\_\_\_\_\_  
Telephone Number

\_\_\_\_\_  
Name of Firm or Corporation

\_\_\_\_\_  
Bidder or Authorized Representative

\_\_\_\_\_  
Position in Firm or Corporation

\_\_\_\_\_  
S.F. Business Tax Registration  
Certificate Number

\_\_\_\_\_  
Address of Firm or Corporation      Zip Code

\_\_\_\_\_  
Contractor's California License No.:

\_\_\_\_\_  
License Expiration Date:

**BOND OR CHECK REQUIRED:** There is herewith attached, as required by law, bid security in accordance with Project Bidding Manual.

***NONDISCRIMINATION IN CONTRACTS AND SMALL BUSINESS ENTERPRISE PROGRAM:***  
*Provisions of chapter 12B (including its implementing Rules and Regulations) of the San Francisco Administrative Code, and the TJPA Small Business Enterprise Program are incorporated herein and by reference made a part of the Bid Sections as though fully set forth. The Bidder and all lower-tier subcontractors and suppliers shall comply with these provisions and shall submit all required sections in a timely manner.*

**SCHEDULE OF BID PRICES**  
**TG13.3 – Ground Level Landscaping**

Name of Bidder: \_\_\_\_\_

The undersigned, having examined all referenced documents and the Drawings, understanding the terms and conditions of the Contract Documents and the local conditions affecting the performance and costs of the Work, and having fully inspected the Site in all its particulars, hereby proposes and agrees to fully perform the Work as indicated on the Drawings and in accordance with the requirements of the Contract Documents within the time stated therein, and for the following price(s):

No.	Item Description	Unit of Measure	Bid Price
<b><u>Ground Level Landscaping</u></b>			
1	Ground Level Landscaping, Planters, Planting & Irrigation	LS	
2	Shaw Alley Art	LS	
<b>TOTAL BASE BID PRICE (Sum of Items 1 + 2)</b>			
<b>PERFORMANCE AND PAYMENT BOND RATE</b> (This is for informational purposes only)			%
<b>POTENTIAL PAYMENT AND PERFORMANCE BOND COST</b> (Total Base Bid Price x Bond Rate, this is for informational purposes only)			\$
3	Additive Specification Alternate No. 35	LS	
4	Additive Specification Alternate No. 36	LS	

Bidder shall furnish a price for all Bid items, including all alternates, set forth in the Schedule of Bid Prices. Failure to furnish a price for all items set forth in the Schedule of Bid Prices shall render the Bid non-responsive and will be cause for its rejection. If an item is left blank, the price shall be assumed to be zero (\$0.00).

In case of discrepancy between the sum of Bid item amounts and the Total Base Bid Price, the sum of said amounts shall prevail. In case of discrepancy between words and figures, the words shall prevail.

Accepted VE Proposals, if any, shall be deducted from the Total Base Bid Price to determine the Bidder's Total Bid Price.

Alternates may be additive or deductive. Bidder must bid and provide a price for all alternates specified.

Alternates shall cover all costs of alternate Work only as indicated on the Bid Documents and shall not include any Work under any base bid items. Alternate prices shall include markups for overhead and

profit. The Bidder shall be responsible to indicate by using plus (+) or minus (-) signs whether alternate amounts are intended to be added to or subtracted from the Total Bid Price.

Webcor/Obayashi Joint Venture will make the actual addition of alternates to or subtraction of alternates from the Total Bid Price. In case an additive alternate amount does not include a plus or minus sign, the amount will be presumed to be additive (+) to the Total Bid Price. In case a deductive alternate amount does not include a plus or minus sign, the amount will be presumed to be deductive (-) from the Total Bid Price.

The total of all Bid items included in the Total Base Bid Price, and accepted Value Engineering ("VE") Proposals, will be considered in determining the Bidder's Total Bid Price.

The Contract, if awarded, will be awarded to the responsible Bidder who submits the lowest responsive Total Bid Price, in accordance with the methodology described above.

Webcor/Obayashi Joint Venture and the TJPA reserve the right to add to or deduct any of the alternates specified in the Schedule of Bid Prices from the Contract Award after the lowest responsible Bidder has been determined. If any alternates are added or deducted after the Contract award, the added or deducted alternate shall be incorporated into the Contract by Change Order at the bid price listed in the Schedule of Bid Prices. Bidder agrees to hold the bid price for all alternates listed above for 90 days following the TJPA's Board approval of the Contract award.

Bidder acknowledges and agrees that this Bid, if not withdrawn prior to the scheduled time for receipt of Bids, shall not be withdrawn for a period of 90 days thereafter.

Total Bid Price:  
\$

---

In Written Words:

---

---

---

Bid submitted by:

\_\_\_\_\_(seal)  
Name of Firm, Corporation, Partnership or Joint Venture

\_\_\_\_\_  
Names of All Partners, if Partnership

\_\_\_\_\_  
State of Incorporation, if Corporation

\_\_\_\_\_  
Signature of Bidder or Authorized Representative

\_\_\_\_\_  
Date of Bid

\_\_\_\_\_  
Name and Title of Authorized Representative

Note: If Bidder is a corporation, set forth the legal name of the corporation together with the signature of the officer or officers authorized to sign contracts on behalf of the corporation. If Bidder is a partnership, set forth the name of the firm together with the signature of the partner or partners authorized to sign contracts on behalf of the partnership. A corporate authority document which indicates individual is authorized to execute bid documents on behalf of the Firm, Corporation, Partnership or Joint Venture shall be attached.

**END OF BID FORM AND SCHEDULE OF BID PRICES**

## ATTACHMENT 2 LOGISTICS

The following attached drawings present the conceptual logistical as-built plans. Locations and configurations are for reference and subject to change:

SL-001 Site Logistics Plan dated 03/05/2014  
SL-002 Site Truck Routing Plan dated 03/22/2012  
SL-025 Site Logistics Construction Zones dated 05/28/2014  
SL-027 Rooftop Obstructions – For Reference Only dated 12/05/2013  
A101 Personnel and Material Hoist Layout – Bracing dated 12/20/2013  
A102 Personnel and Material Hoist Layout – Lower Concourse dated 12/20/2013  
A103 Personnel and Material Hoist Layout – Ground Level dated 12/20/2013  
A104 Personnel and Material Hoist Layout – Second Level dated 12/20/2013  
A105 Personnel and Material Hoist Layout – Bus Deck Level dated 12/20/2013  
A106 Personnel and Material Hoist Layout – Roof Level dated 12/20/2013  
A107 Personnel and Material Hoist #1 Location dated 12/20/2013  
A108 Personnel and Material Hoist #2 Location dated 12/20/2013  
A109 Personnel and Material Hoist #3 Location dated 12/20/2013  
A110 Personnel and Material Hoist #4 Location dated 12/20/2013  
X-01 Logistics Aerial View dated 11/07/2013  
X-03 3D Section dated 11/07/2013  
X-04 3D Section dated 11/07/2013  
X-05 3D Section West Facing dated 11/07/2013  
X-06 Crane Section dated 11/07/2013  
X-07 Roof Rail-Mounted Cranes dated 11/07/2013  
X-08 Temporary Platform dated 11/07/2013  
X-15 Rooftop Crane and Tower Crane Logistics dated 04/23/2013  
X-16 Natoma-Howard St. Area Logistics dated 04/23/2013  
X-17 Rail Crane Logistics dated 12/20/2013  
X-18 Rail Crane Logistics 3D Section dated 12/20/2013

## END OF LOGISTICS

## ISSUANCE LOG

REV No.	ISSUE	DATE
0	Issued For Bid TG13.3	2014-09-16
<b>A</b>	<b>Addendum #1</b>	<b>2014-09-22</b>

## END OF EXHIBIT A



1751 HARBOR BAY PARKWAY  
SUITE 200  
ALAMEDA, CA 94502  
Phone: (510) 748-1900  
Fax: (510) 748-7829

JOB SITE  
Address: 175 BEALE ST  
SAN FRANCISCO, CA 94105  
Phone: 415-398-2700  
Fax: 510-748-7830

# TRANSBAY TRANSIT CENTER

## SAN FRANCISCO, CA

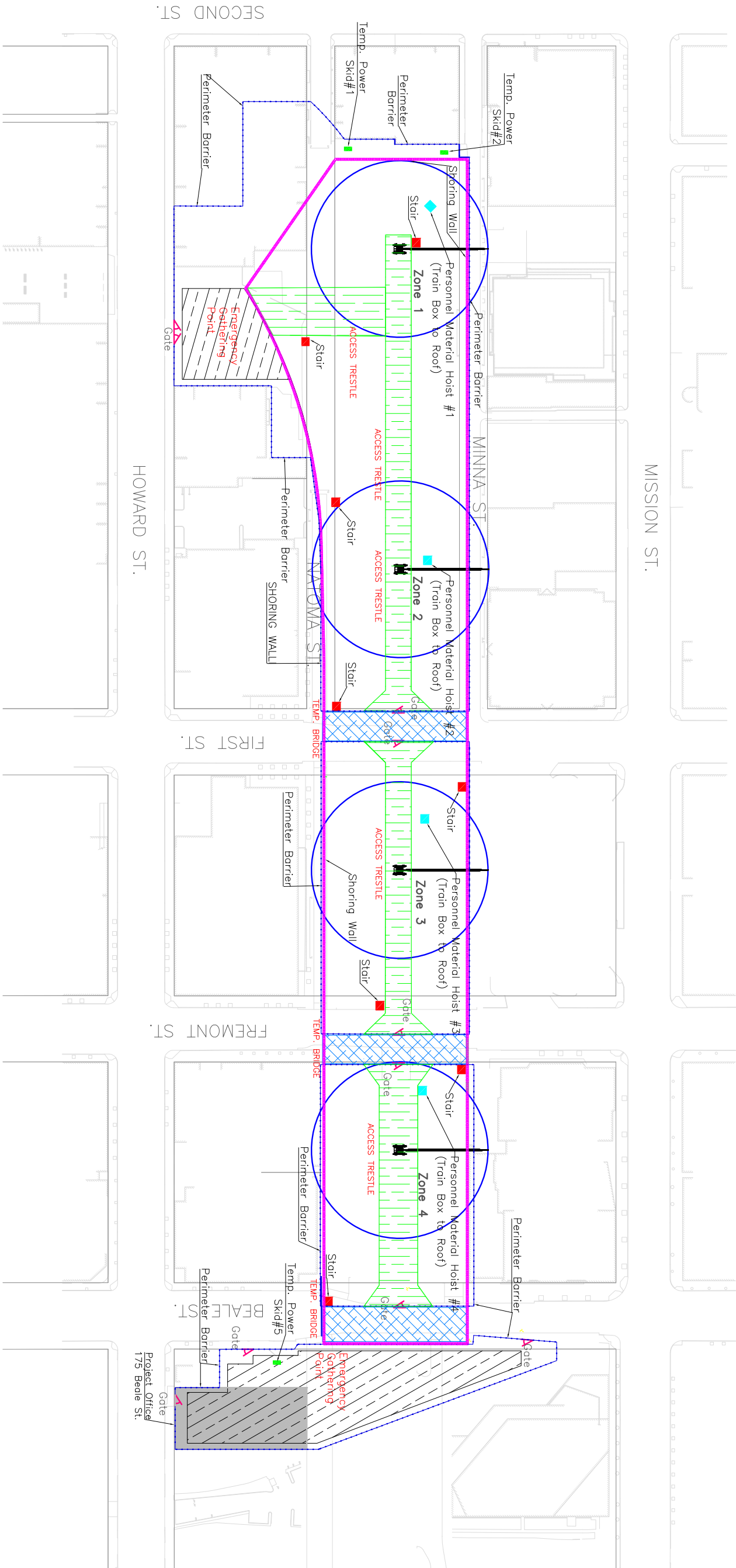
### Revision Block

Rev. No.	Description	Date
01	BSE Phase	07-30-10
02	Updated Main & Material Details	08-15-10
03	Updated Main & Material Details	08-27-10
04	Updated for TOLXTR004-RNP	10-12-10
05	Updated for TOLXTR004-RNP	10-20-10
06	Updated for TOLXTR004-RNP	10-22-12
07	Updated for TOLXTR004-RNP	08-23-12
08	Updated for TOLXTR004-RNP	08-23-12
09	Updated for TOLXTR004-RNP	08-23-12
10	Updated for TOLXTR004-RNP	08-23-12
11	Updated for TOLXTR004-RNP	08-23-12
12	Updated for TOLXTR004-RNP	08-23-12
13	Updated for TOLXTR004-RNP	08-23-12
14	Updated for TOLXTR004-RNP	08-23-12
15	Updated for TOLXTR004-RNP	08-23-12
16	Updated for TOLXTR004-RNP	08-23-12
17	Updated for TOLXTR004-RNP	08-23-12
18	Updated for TOLXTR004-RNP	08-23-12
19	Updated for TOLXTR004-RNP	08-23-12
20	Updated for TOLXTR004-RNP	08-23-12
21	Updated for TOLXTR004-RNP	08-23-12
22	Updated for TOLXTR004-RNP	08-23-12
23	Updated for TOLXTR004-RNP	08-23-12
24	Updated for TOLXTR004-RNP	08-23-12
25	Updated for TOLXTR004-RNP	08-23-12
26	Updated for TOLXTR004-RNP	08-23-12
27	Updated for TOLXTR004-RNP	08-23-12
28	Updated for TOLXTR004-RNP	08-23-12
29	Updated for TOLXTR004-RNP	08-23-12
30	Updated for TOLXTR004-RNP	08-23-12
31	Updated for TOLXTR004-RNP	08-23-12
32	Updated for TOLXTR004-RNP	08-23-12
33	Updated for TOLXTR004-RNP	08-23-12
34	Updated for TOLXTR004-RNP	08-23-12
35	Updated for TOLXTR004-RNP	08-23-12
36	Updated for TOLXTR004-RNP	08-23-12
37	Updated for TOLXTR004-RNP	08-23-12
38	Updated for TOLXTR004-RNP	08-23-12
39	Updated for TOLXTR004-RNP	08-23-12
40	Updated for TOLXTR004-RNP	08-23-12
41	Updated for TOLXTR004-RNP	08-23-12
42	Updated for TOLXTR004-RNP	08-23-12
43	Updated for TOLXTR004-RNP	08-23-12
44	Updated for TOLXTR004-RNP	08-23-12
45	Updated for TOLXTR004-RNP	08-23-12
46	Updated for TOLXTR004-RNP	08-23-12
47	Updated for TOLXTR004-RNP	08-23-12
48	Updated for TOLXTR004-RNP	08-23-12
49	Updated for TOLXTR004-RNP	08-23-12
50	Updated for TOLXTR004-RNP	08-23-12
51	Updated for TOLXTR004-RNP	08-23-12
52	Updated for TOLXTR004-RNP	08-23-12
53	Updated for TOLXTR004-RNP	08-23-12
54	Updated for TOLXTR004-RNP	08-23-12
55	Updated for TOLXTR004-RNP	08-23-12
56	Updated for TOLXTR004-RNP	08-23-12
57	Updated for TOLXTR004-RNP	08-23-12
58	Updated for TOLXTR004-RNP	08-23-12
59	Updated for TOLXTR004-RNP	08-23-12
60	Updated for TOLXTR004-RNP	08-23-12
61	Updated for TOLXTR004-RNP	08-23-12
62	Updated for TOLXTR004-RNP	08-23-12
63	Updated for TOLXTR004-RNP	08-23-12
64	Updated for TOLXTR004-RNP	08-23-12
65	Updated for TOLXTR004-RNP	08-23-12
66	Updated for TOLXTR004-RNP	08-23-12
67	Updated for TOLXTR004-RNP	08-23-12
68	Updated for TOLXTR004-RNP	08-23-12
69	Updated for TOLXTR004-RNP	08-23-12
70	Updated for TOLXTR004-RNP	08-23-12
71	Updated for TOLXTR004-RNP	08-23-12
72	Updated for TOLXTR004-RNP	08-23-12
73	Updated for TOLXTR004-RNP	08-23-12
74	Updated for TOLXTR004-RNP	08-23-12
75	Updated for TOLXTR004-RNP	08-23-12
76	Updated for TOLXTR004-RNP	08-23-12
77	Updated for TOLXTR004-RNP	08-23-12
78	Updated for TOLXTR004-RNP	08-23-12
79	Updated for TOLXTR004-RNP	08-23-12
80	Updated for TOLXTR004-RNP	08-23-12
81	Updated for TOLXTR004-RNP	08-23-12
82	Updated for TOLXTR004-RNP	08-23-12
83	Updated for TOLXTR004-RNP	08-23-12
84	Updated for TOLXTR004-RNP	08-23-12
85	Updated for TOLXTR004-RNP	08-23-12
86	Updated for TOLXTR004-RNP	08-23-12
87	Updated for TOLXTR004-RNP	08-23-12
88	Updated for TOLXTR004-RNP	08-23-12
89	Updated for TOLXTR004-RNP	08-23-12
90	Updated for TOLXTR004-RNP	08-23-12
91	Updated for TOLXTR004-RNP	08-23-12
92	Updated for TOLXTR004-RNP	08-23-12
93	Updated for TOLXTR004-RNP	08-23-12
94	Updated for TOLXTR004-RNP	08-23-12
95	Updated for TOLXTR004-RNP	08-23-12
96	Updated for TOLXTR004-RNP	08-23-12
97	Updated for TOLXTR004-RNP	08-23-12
98	Updated for TOLXTR004-RNP	08-23-12
99	Updated for TOLXTR004-RNP	08-23-12
100	Updated for TOLXTR004-RNP	08-23-12

### Site Logistics

Job No.:	30100
Scale:	N/A

SL-001



### GENERAL NOTES

- No jobsite parking available.
- No loading or unloading of materials on city streets at any time. Violators will be cited and fined.
- All deliveries must be coordinated with Webcor/Obayashi.
- Storage of materials in Staging Areas must be coordinated with Webcor/Obayashi.
- All visitors must check in at the Webcor/Obayashi project office.
- Perimeter barrier location is for reference only. Each trade subcontractor shall identify the required perimeter barrier locations in the contract documents.
- Location, size, and width of access trestles and temporary bridges to be designed per the requirements in the construction documents. Actual Locations are subject to change.
- Personnel Material Hoists and stair locations are diagrammatic in nature and do not depict placement of hoists and stairs in the BSE package. Location to be coordinated with and approved by Webcor/Obayashi.
- For staging areas, locations, and availability, see the latest issued revision of spec 01 14 19 – Restriction of Use to Site Areas. Usage of these areas will be at the discretion and assigned by Webcor/Obayashi. Refer to Contract Documents.
- Location and configuration of gates are for reference only. For location and design refer to contract documents.

PROJECT  
NORTH

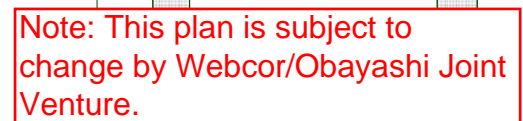
NOT FOR CONSTRUCTION

IMPORTANT NOTE:

THESE DRAWINGS ARE NOT INTENDED TO REPLACE THE DESIGN ARCHITECTURAL AND STRUCTURAL DRAWINGS. ALL DIMENSIONS, LOCATIONS, AND BE CHECKED ON-SITE AGAINST THE LATEST DESIGN AND DOCUMENTATIONS.

SHEET TITLE

## SL - 002





**JOBSITE**  
Address: 175 BEALE ST  
SAN FRANCISCO, CA 94105  
Phone: 415-978-5700  
Fax: 510-748-7830

## TRANSBAY TRANSIT CENTER

SAN FRANCISCO, CA

[illegible]

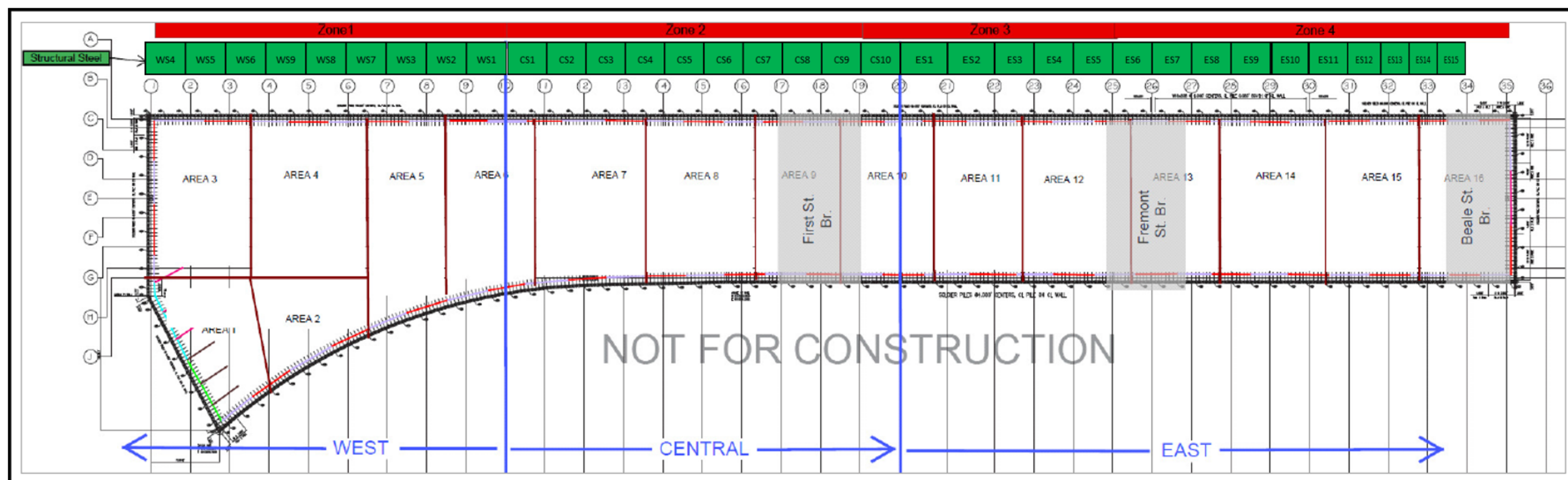
Drawn By	DH	Date	08-22-12
Checked By	SR	Date	08-22-12

Job No.: 30100

## Construction Zones and Areas

SCALE: N/A

SL-025



NOT FOR CONSTRUCTION

IMPORTANT NOTE:

THESE DRAWINGS ARE NOT INTENDED TO REPLACE THE DESIGN ARCHITECTURAL AND STRUCTURAL DRAWINGS. ALL DIMENSIONS, LOCATIONS, AND ELEVATIONS SHOWN ON THIS DRAWING ARE TO BE CHECKED ON-SITE AGAINST THE LATEST DESIGN AND DOCUMENTATIONS.



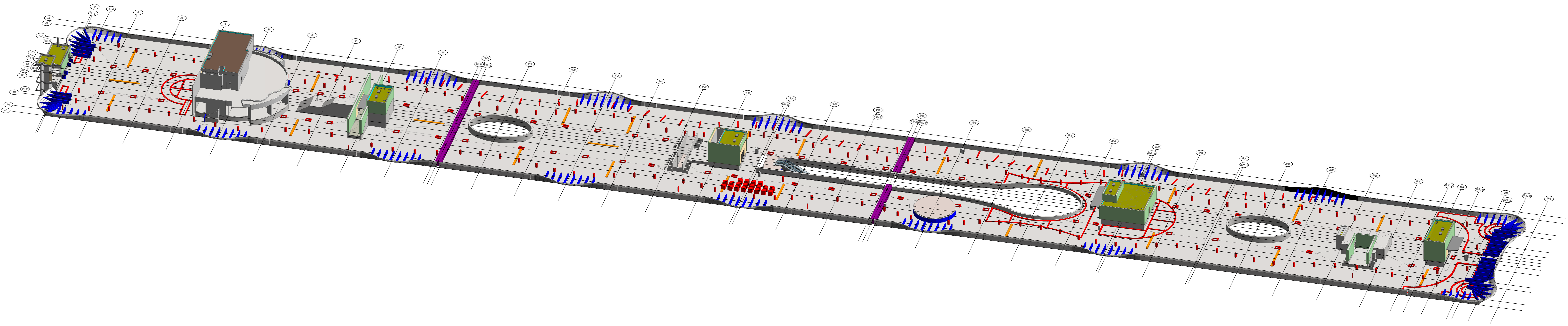
Transbay Transit Center  
San Francisco, California

REV	DATE	DESCRIPTION
1	12/5/2013	PROJECT NO. X
2		MODEL FILE: X
3		DRAWN BY: Ty McConnell X
4		CHECKED BY: X
5		COPYRIGHT

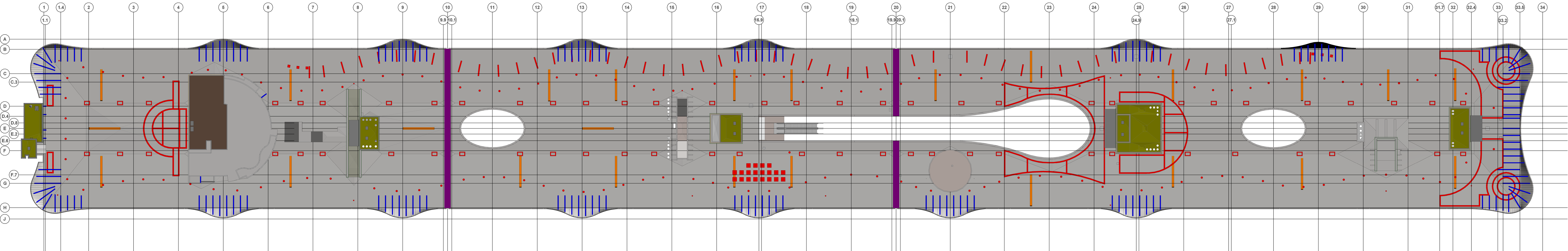
Rooftop  
Obstructions  
For Reference  
Only

SL-027

Scale AS SHOWN



2 3D  
SCALE: NTS



1 Plan  
SCALE: 1" = 20'-0"





The size, quantity, and position of internal bracing elements is based on the Internal Bracing and Shoring Wall Drawings dated 09/13/2013.



**175 Beale Street  
San Francisco, CA**

## Transbay Transit Center

San Francisco, CA

R1	12/16/2013	
MARK	DATE	DESCRIPTION

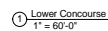
PROJECT NO:	X
MODEL FILE:	X
DRAWN BY:	X
CHKD BY:	X
COPYRIGHT	

SHEET TITLE

## Personnel and Material Hoist Layout - Bracing

A101

Scale AS SHOWN



The size, quantity, and position of internal bracing elements is based on the Internal Bracing and Shoring Wall Drawings dated 09/13/2013.

Scale AS SHOWN

Scale	AS SHOWN
-------	----------



The size, quantity, and position of internal bracing elements is based on the Internal Bracing and Shoring Wall Drawings dated 09/13/2013.



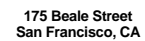
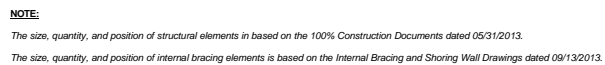
San Francisco, CA

PROJECT NO:	X
MODEL FILE:	X
DRAWN BY:	X
CHK'D BY:	X
COPYRIGHT	

### Personnel and Material Hoist Layout - Second Level

A104

Scale	AS SHOWN
-------	----------



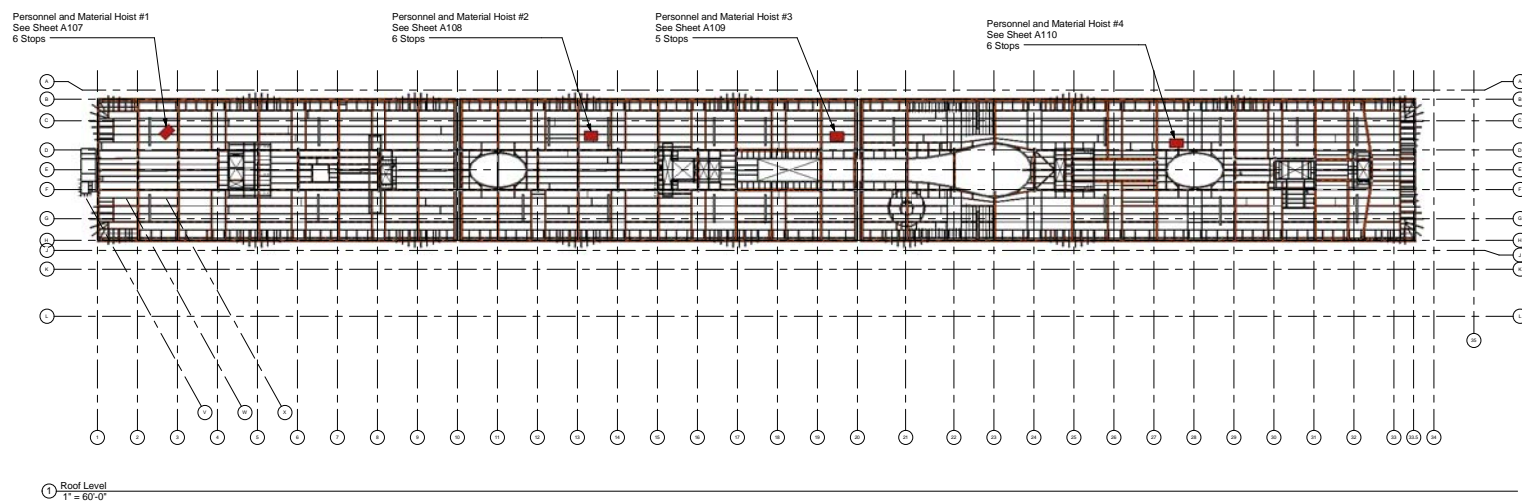
San Francisco, CA

PROJECT NO:	X
MODEL FILE:	X
DRAWN BY:	X
CHECK'D BY:	X
COPYRIGHT	

### Personnel and Material Hoist Layout - Bus Deck Level

A105

Scale	AS SHOWN
-------	----------



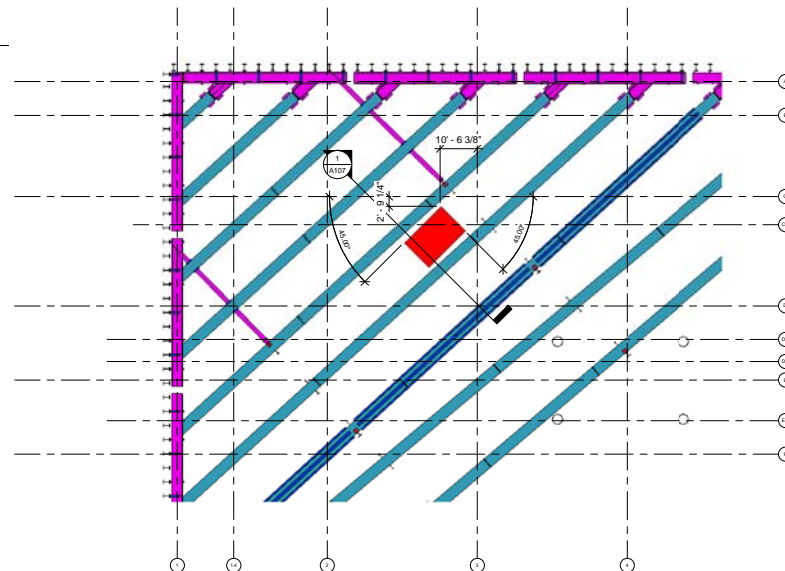
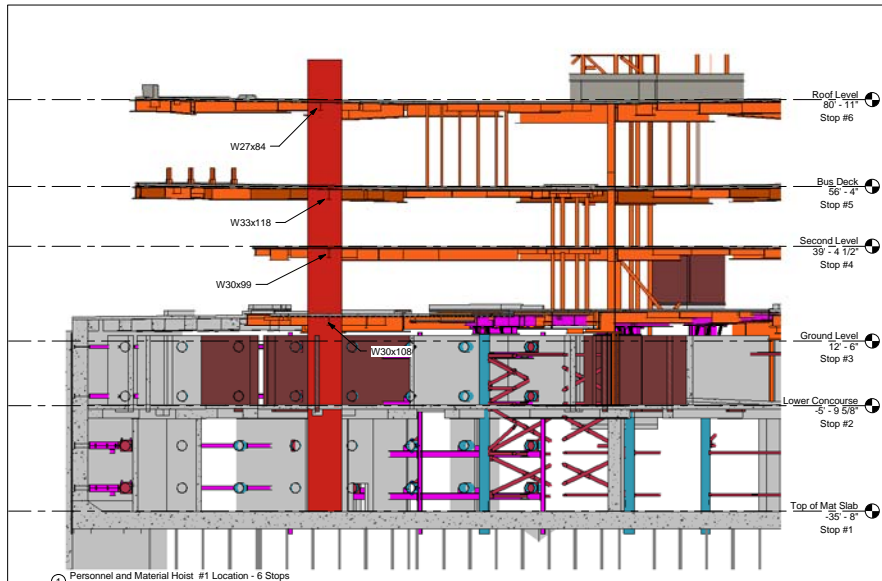
## Transbay Transit Center

R1	12/16/2013	
MARK	DATE	DESCRIPTION

SHEET TITLE

A106

Scale	AS SHOWN
-------	----------



**NOTE:**

The size, quantity, and position of structural elements in based on the 100% Construction Documents dated 05/31/2013.

The size, quantity, and position of internal bracing elements is based on the Internal Bracing and Shoring Wall Drawings dated 09/13/2013.



175 Beale Street  
San Francisco, CA

Transbay Transit Center

San Francisco, CA

MARK	DATE	DESCRIPTION
R1	12/16/2013	

PROJECT NO:	X
MODEL FILE:	X
DRAWN BY:	X
CHKD BY:	X
COPYRIGHT	

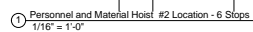
SHEET TITLE

Personnel  
and Material  
Hoist #1  
Location

A107

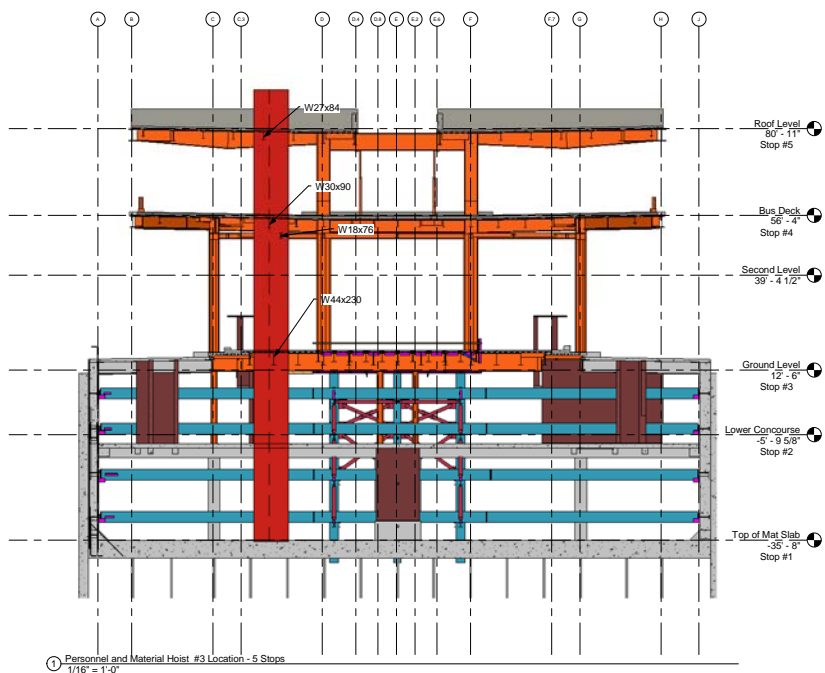
Scale AS SHOWN





The size, quantity, and position of internal bracing elements is based on the Internal Bracing and Shoring Wall Drawings dated 09/13/2013.

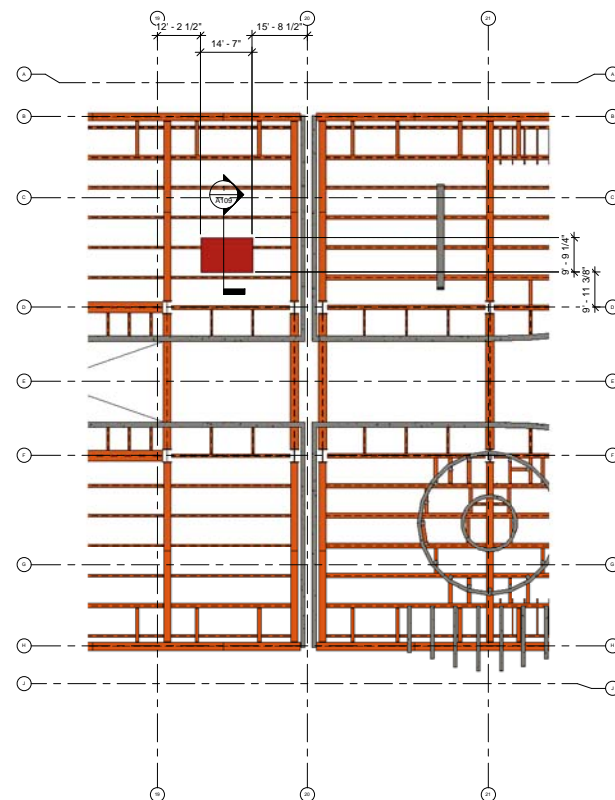




**NOTE:**

The size, quantity, and position of structural elements in based on the 100% Construction Documents dated 05/31/2013.

The size, quantity, and position of internal bracing elements is based on the Internal Bracing and Shoring Wall Drawings dated 09/13/2013.



175 Beale Street  
San Francisco, CA

Transbay Transit Center

San Francisco, CA

MARK	DATE	DESCRIPTION
R1	12/16/2013	

PROJECT NO.	X
MODEL FILE:	X
DRAWN BY:	X
CHKD BY:	X
COPYRIGHT	

SHEET TITLE

Personnel  
and Material  
Hoist #3  
Location

A109

Scale AS SHOWN



The size, quantity, and position of internal bracing elements is based on the Internal Bracing and Shoring Wall Drawings dated 09/13/2013.



**175 Beale Street  
San Francisco, CA**

## Transbay Transit Center

San Francisco, CA

R1	12/16/2013	
MARK	DATE	DESCRIPTION

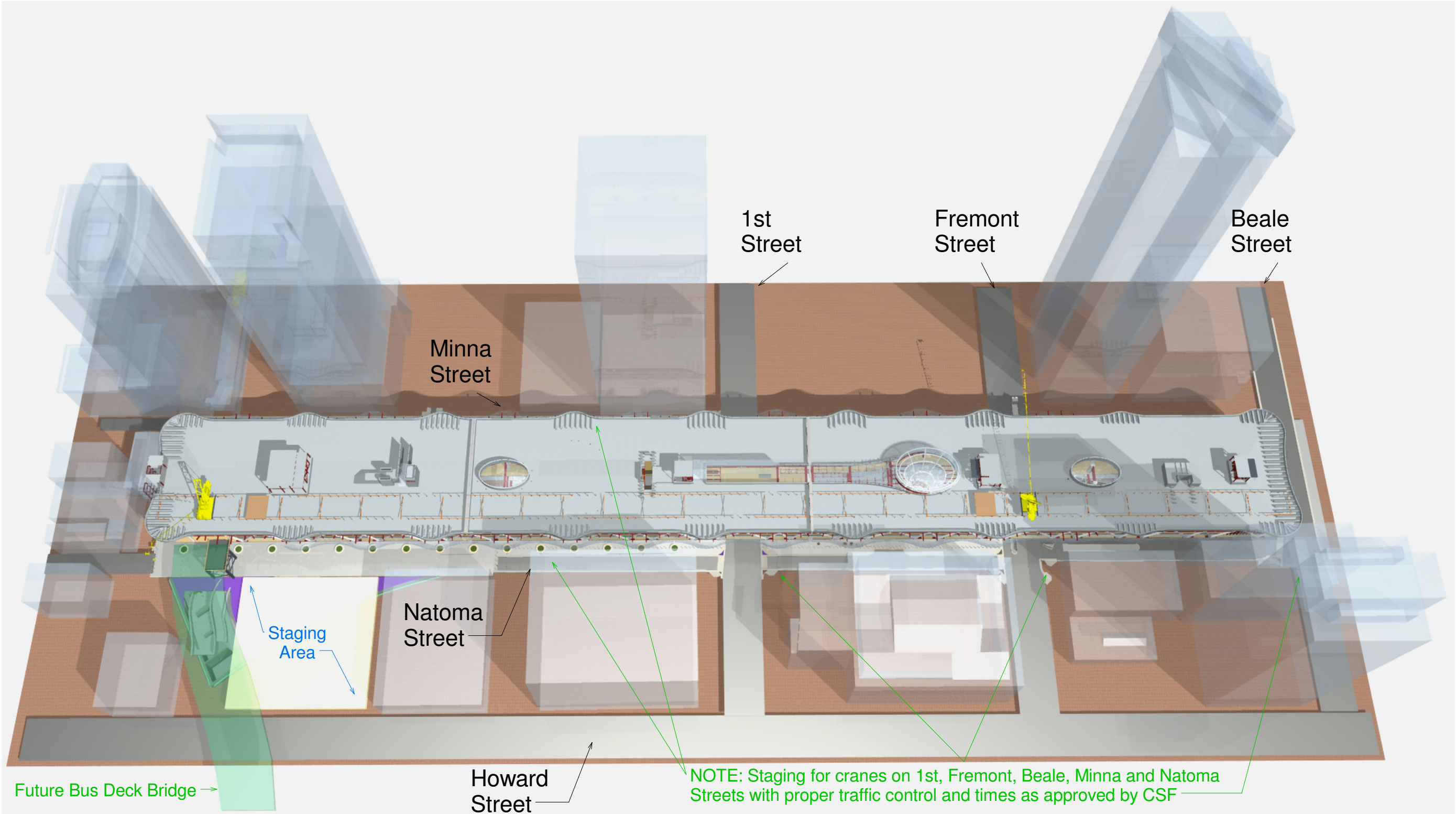
PROJECT NO:	X
MODEL FILE:	X
DRAWN BY:	X
CHKD BY:	X
COPYRIGHT	

SHEET TITLE

Personnel  
and Material  
Hoist #4  
Location

A110

Scale AS SHOWN



Transbay Transit Center

San Francisco, California

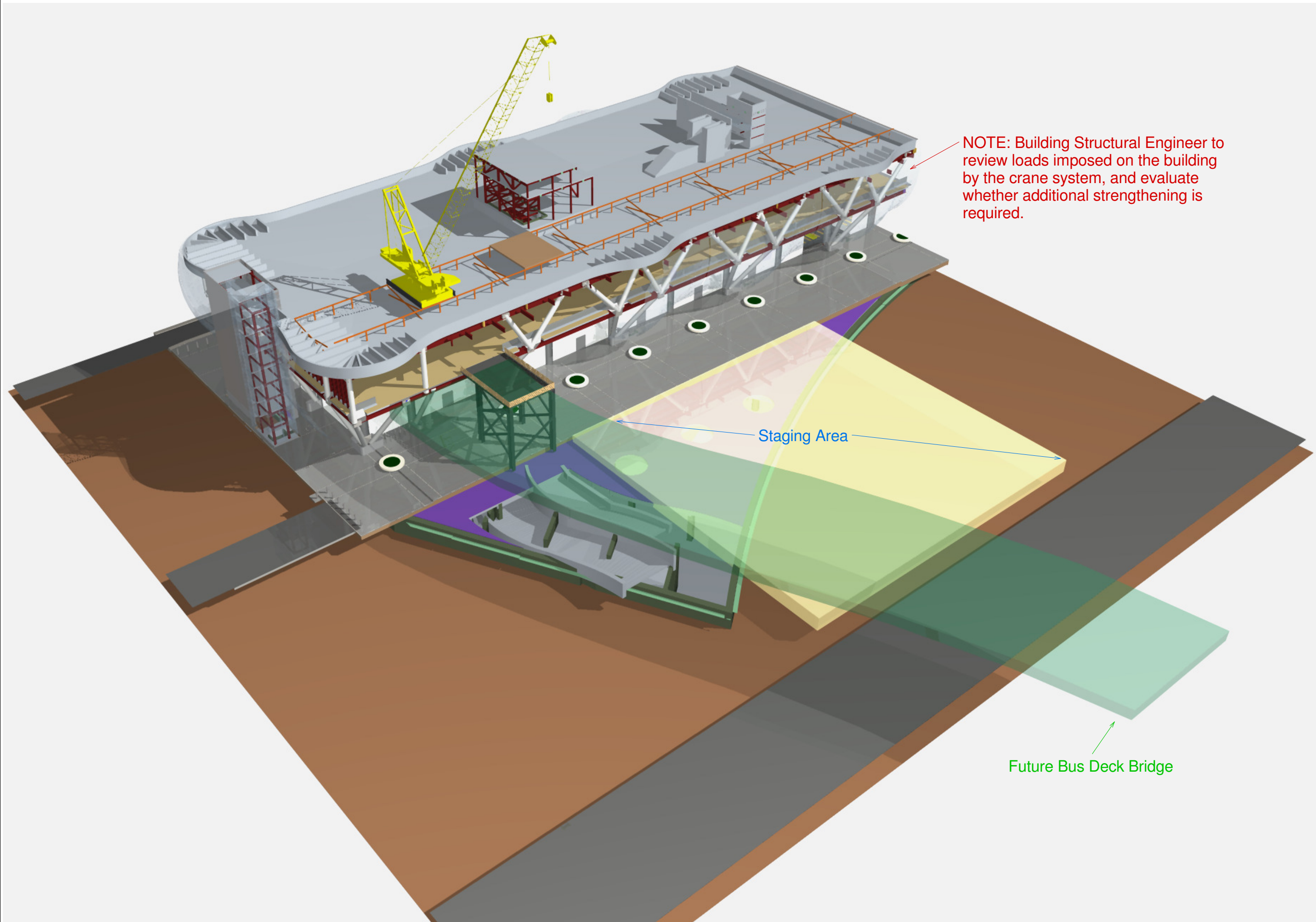
MARK	DATE	DESCRIPTION

PROJECT NO:	X
MODEL FILE:	X
DRAWN BY:	Matt Zwetzig
CHK'D BY:	X
COPYRIGHT	

SHEET TITLE
Logistics Aerial View

X-01
Scale AS SHOWN





Transbay Transit Center

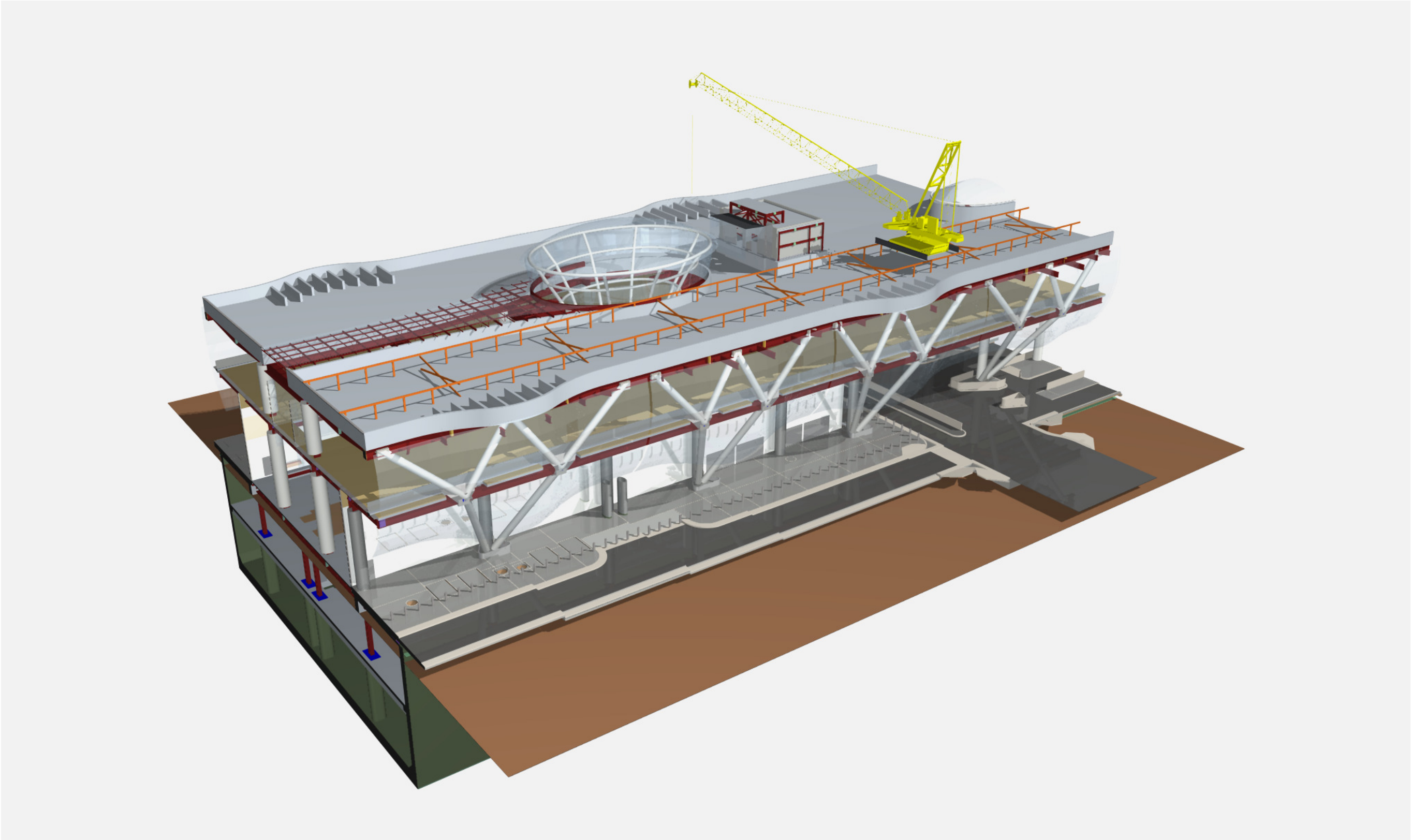
San Francisco, California

MARK	DATE	DESCRIPTION

PROJECT NO:	X
MODEL FILE:	X
DRAWN BY:	Matt Zwetzig
CHKD BY:	X
COPYRIGHT	

SHEET TITLE
3D Section

X-03
Scale AS SHOWN



207 King Street, Suite 300  
San Francisco, California 94107

Transbay Transit Center

San Francisco, California

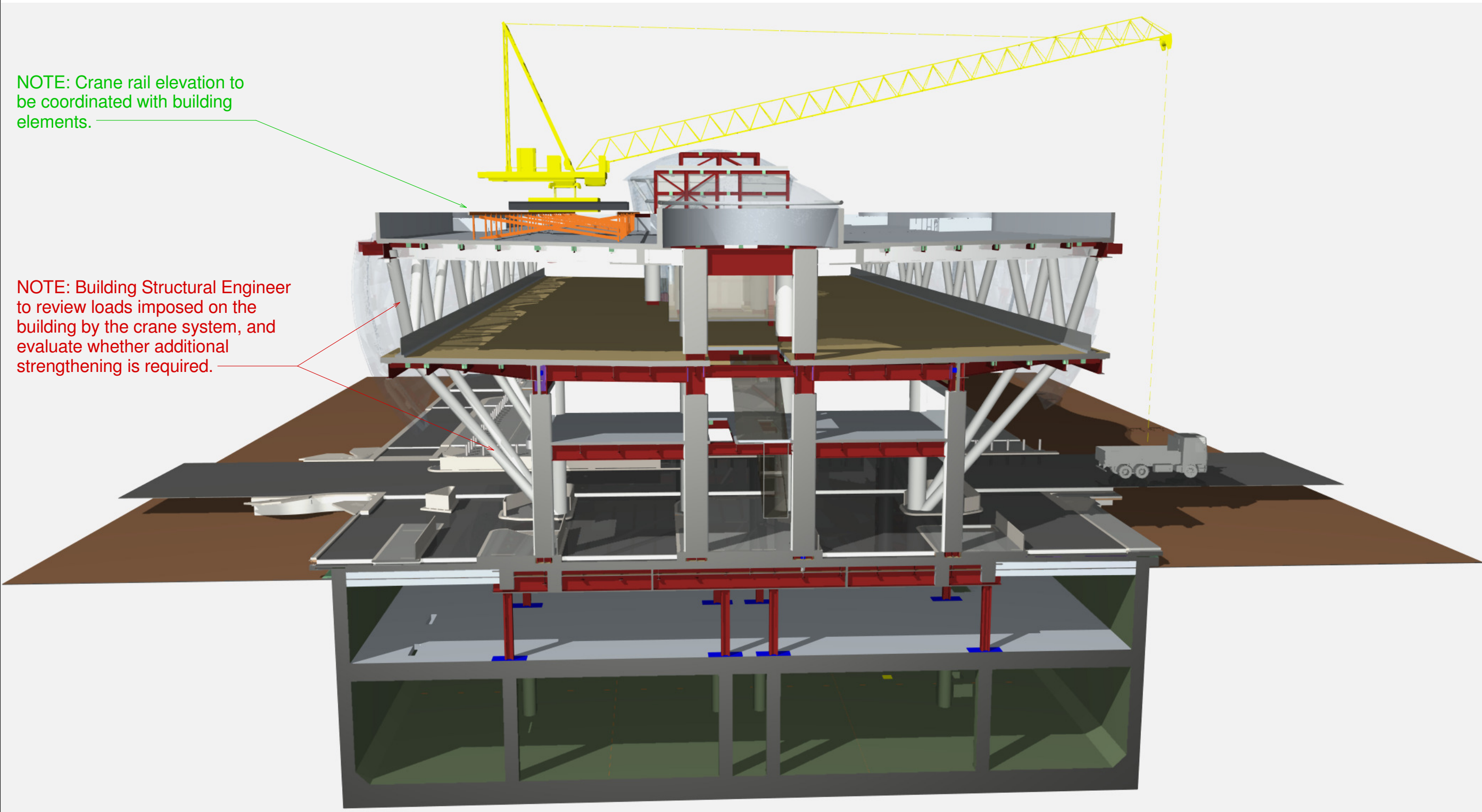
MARK	DATE	DESCRIPTION

PROJECT NO:	X
MODEL FILE:	X
DRAWN BY:	Matt Zwetzig
CHKD BY:	X
COPYRIGHT	

SHEET TITLE
3D Section

X-04
Scale AS SHOWN





NOTE: Crane rail elevation to be coordinated with building elements.

NOTE: Building Structural Engineer to review loads imposed on the building by the crane system, and evaluate whether additional strengthening is required.

Transbay Transit Center

San Francisco, California

MARK	DATE	DESCRIPTION

PROJECT NO:	X
MODEL FILE:	X
DRAWN BY:	Matt Zwetzig
CHKD BY:	X
COPYRIGHT	

SHEET TITLE

3D Section  
West Facing

X-05



San Francisco, California

MARK	DATE	DESCRIPTION

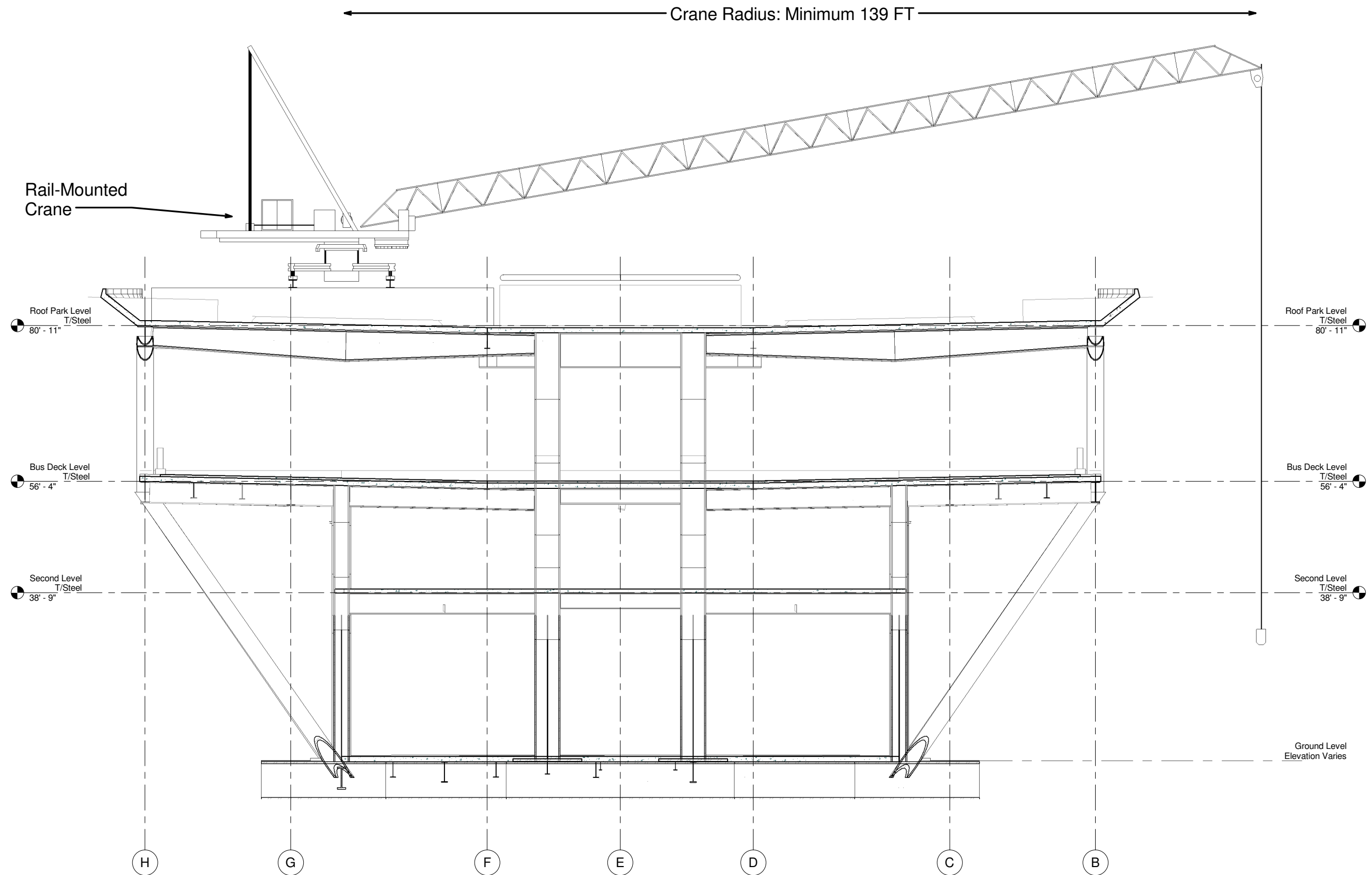
PROJECT NO:	X
MODEL FILE:	X
DRAWN BY:	Matt Zwetzig
CHK'D BY:	X
COPYRIGHT	

SHEET TITLE

## Crane Section

**X-06**

Scale AS SHOWN

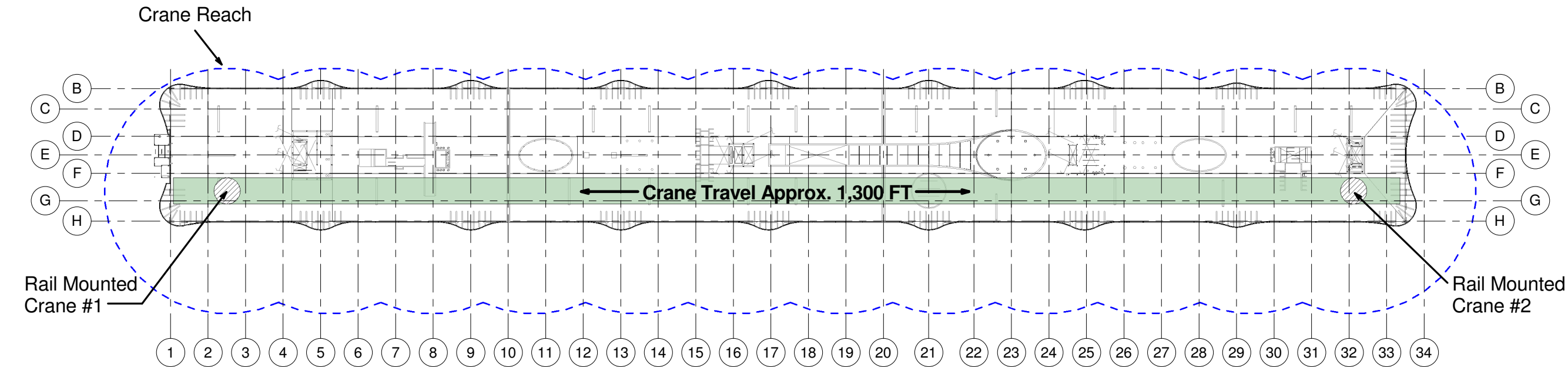


① Crane Section  
1/8" = 1'-0"



Transbay Transit Center

San Francisco, California



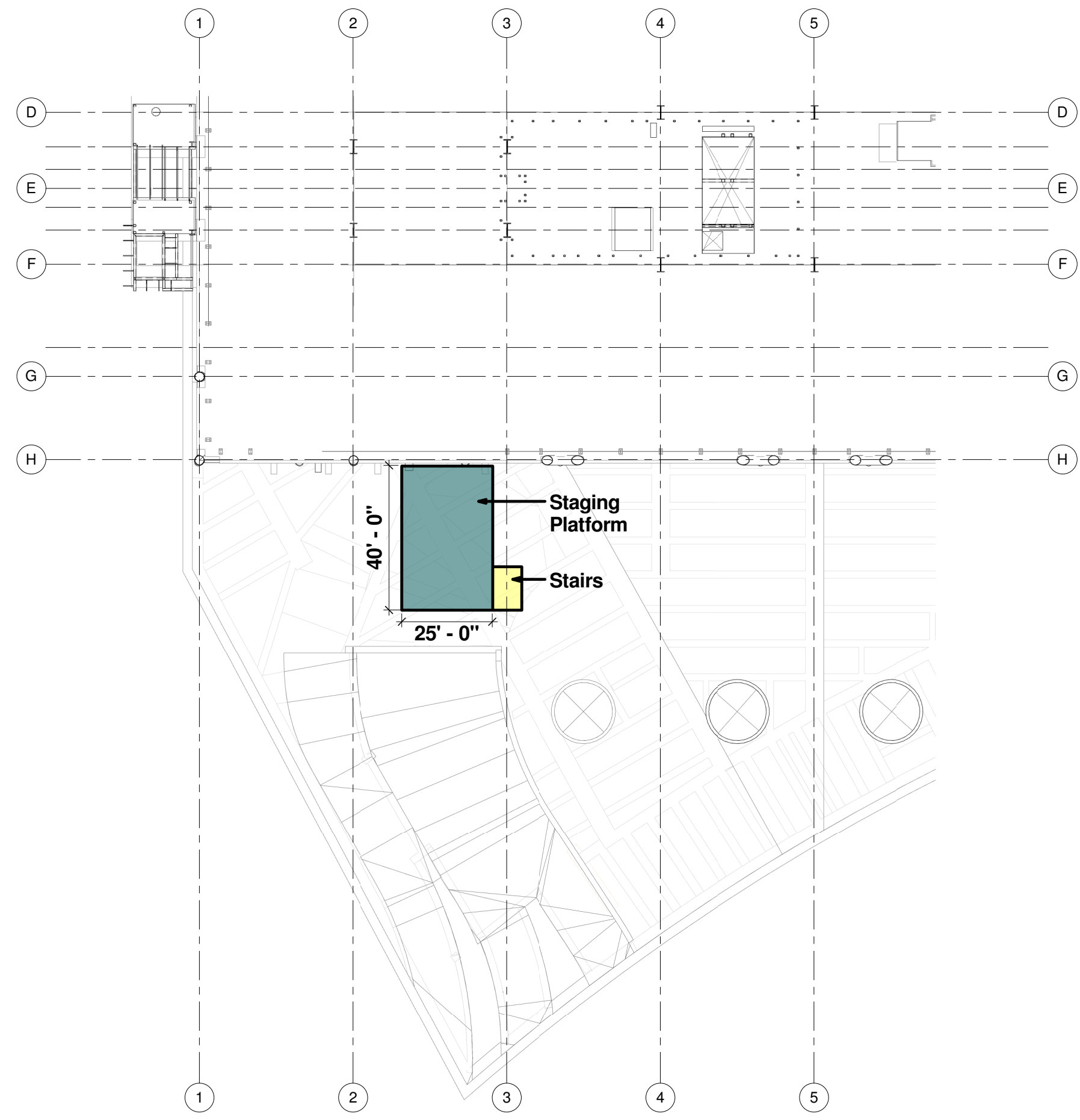
① Roof Park Level T/Steel  
1/64" = 1'-0"

MARK	DATE	DESCRIPTION

PROJECT NO:	X
MODEL FILE:	X
DRAWN BY:	Matt Zwetzig
CHK'D BY:	X
COPYRIGHT	

SHEET TITLE
Roof Rail-Mounted Cranes

X-07
Scale AS SHOWN



① Bus Deck Level T/Steel  
1/16" = 1'-0"



JOINT VENTURE

207 King Street, Suite 300  
San Francisco, California 94107

Transbay Transit Center

San Francisco, California

MARK	DATE	DESCRIPTION

PROJECT NO:	X
MODEL FILE:	X
DRAWN BY:	Matt Zwetzig
CHK'D BY:	X
COPYRIGHT	

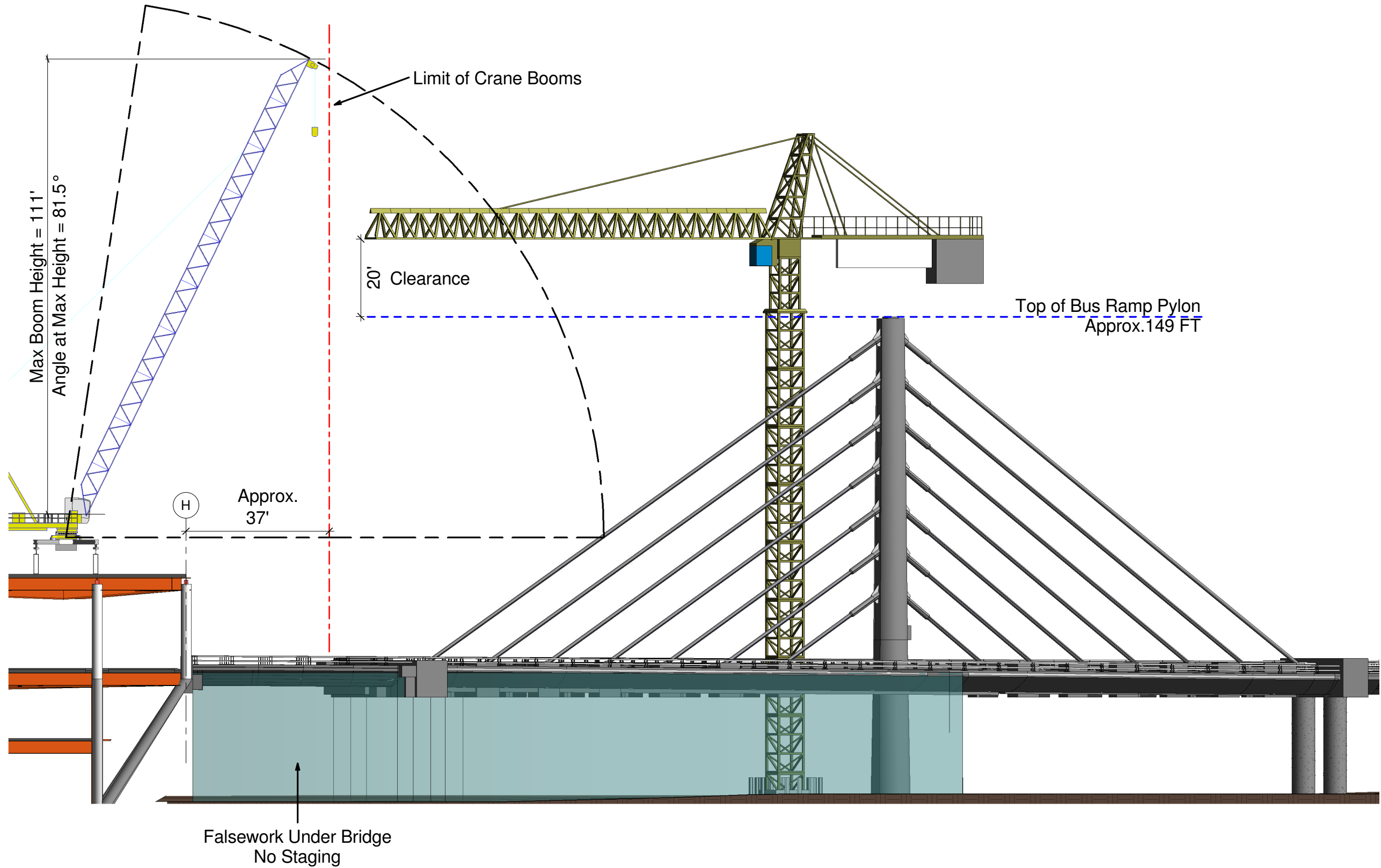
SHEET TITLE

Staging Platform

X-08

ScaleAS SHOWN

- Notes:
- All distances are approximate
  - Tower Crane and Rooftop Crane configuration subject to change



**Transbay Transit Center**  
San Francisco, California

1	4/18/13	Bridge Logistics
2	4/23/13	Update
MARK	DATE	DESCRIPTION

PROJECT NO:	X
MODEL FILE:	X
DRAWN BY:	Matt Zwetzig / Blair Hinojosa
CHK'D BY:	X
COPYRIGHT	

SHEET TITLE

**Rooftop  
Crane and  
Tower Crane  
Logistics**

**X-15**

Scale AS SHOWN

Transbay Transit Center

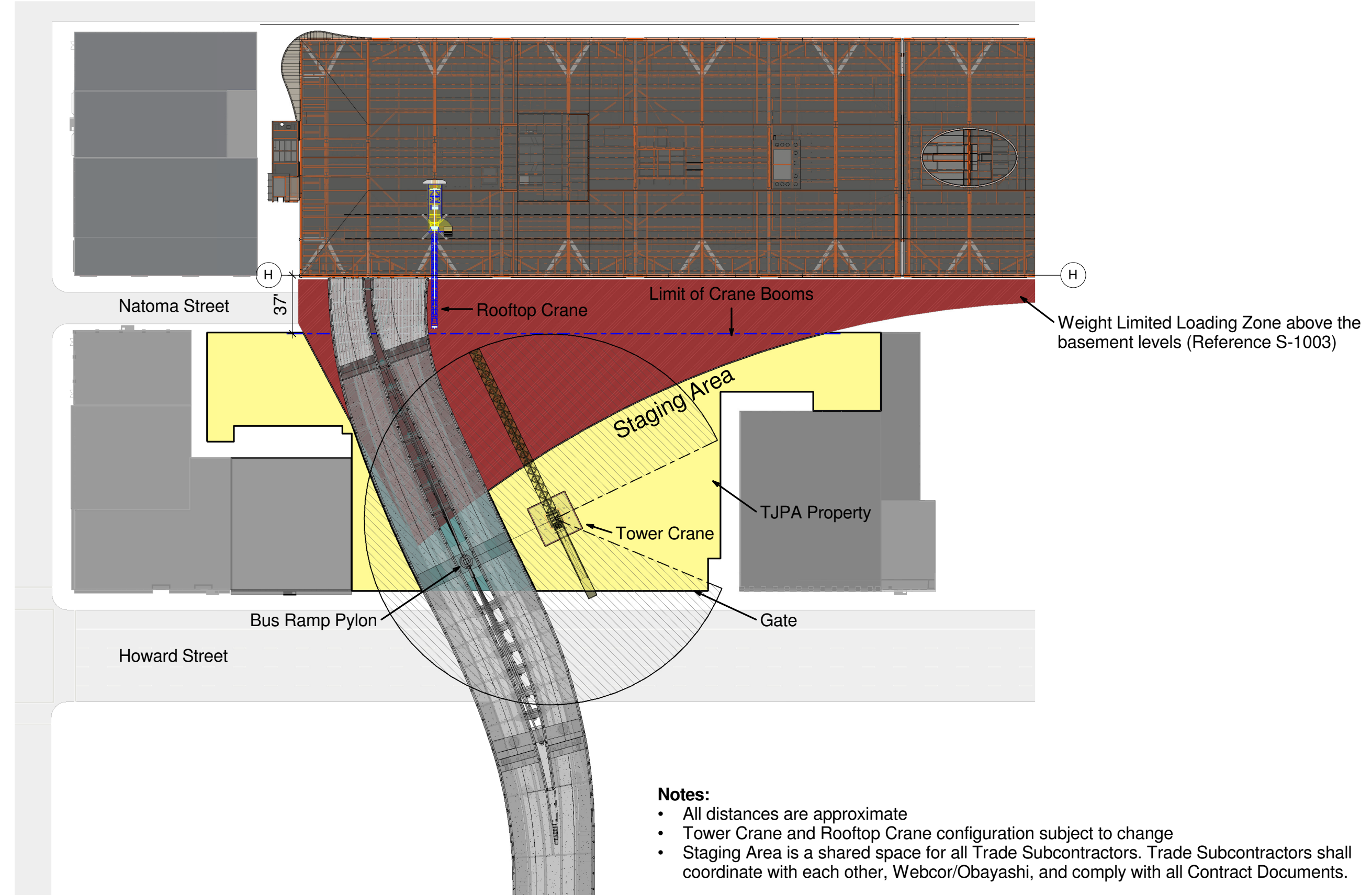
San Francisco, California

1	4/18/13	Bridge Logistics
2	4/23/13	Update
MARK	DATE	DESCRIPTION

PROJECT NO:	X
MODEL FILE:	X
DRAWN BY:	Matt Zwetzig / Blair Hinojosa
CHK'D BY:	X
COPYRIGHT	

SHEET TITLE
Natoma - Howard St. Area Logistics

X-16



- Notes:**
- All distances are approximate
  - Tower Crane and Rooftop Crane configuration subject to change
  - Staging Area is a shared space for all Trade Subcontractors. Trade Subcontractors shall coordinate with each other, Webcor/Obayashi, and comply with all Contract Documents.





207 King Street, Suite 300  
San Francisco, California 94107

# Transbay Transit Center

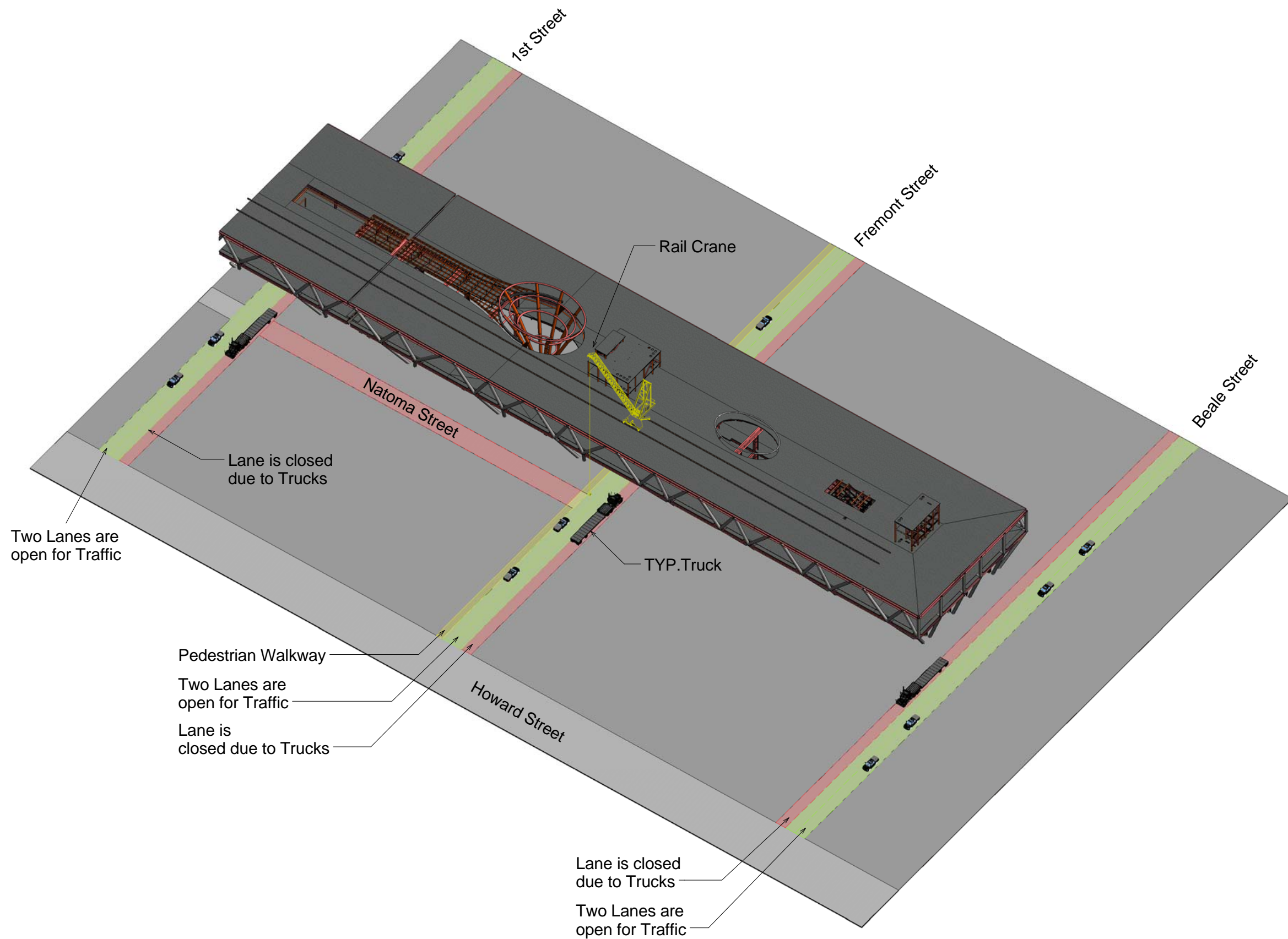
San Francisco, California

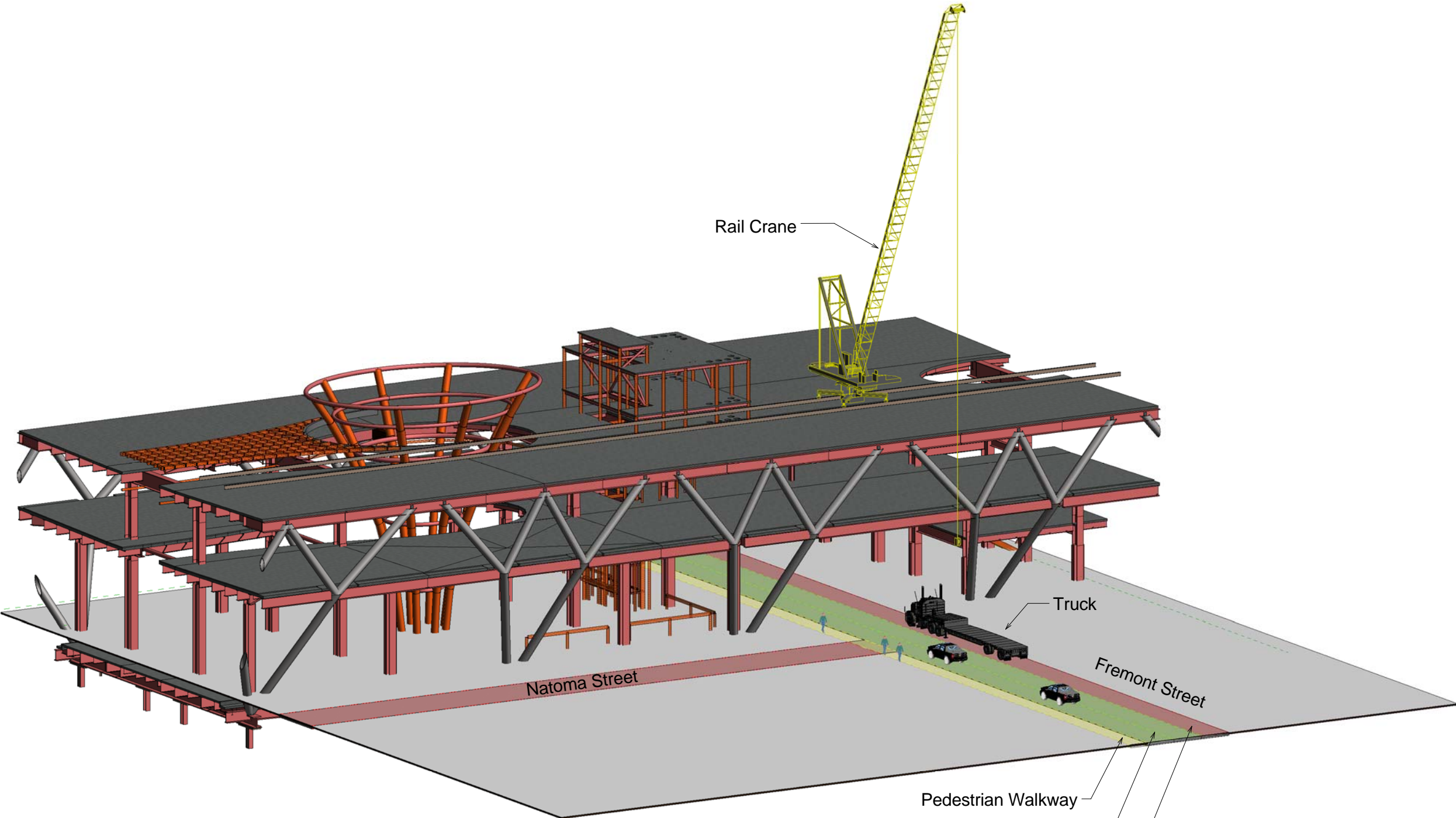
1	4/18/13	Bridge Logistics
2	4/23/13	Update
3	12/20/13	Update
MARK	DATE	DESCRIPTION

PROJECT NO:	X
MODEL FILE:	X
DRAWN BY:	Matt Zwetzig / Blair Hinojosa / Ty M.
CHKD BY:	X
COPYRIGHT	

SHEET TITLE
Rail Crane Logistics

X-17
Scale AS SHOWN





207 King Street, Suite 300  
San Francisco, California 94107

# Transbay Transit Center

San Francisco, California

1	4/18/13	Bridge Logistics
2	4/23/13	Update
3	12/20/13	Update

MARK	DATE	DESCRIPTION
------	------	-------------

PROJECT NO:	X
MODEL FILE:	X
DRAWN BY:	Matt Zwetzig / Blair Hinojosa / Ty M.
CHKD BY:	X
COPYRIGHT	

SHEET TITLE

Rail Crane  
Logistics 3D  
Section

X-18

Scale AS SHOWN