



Construction Update

December 8, 2011

Transbay Transit Center

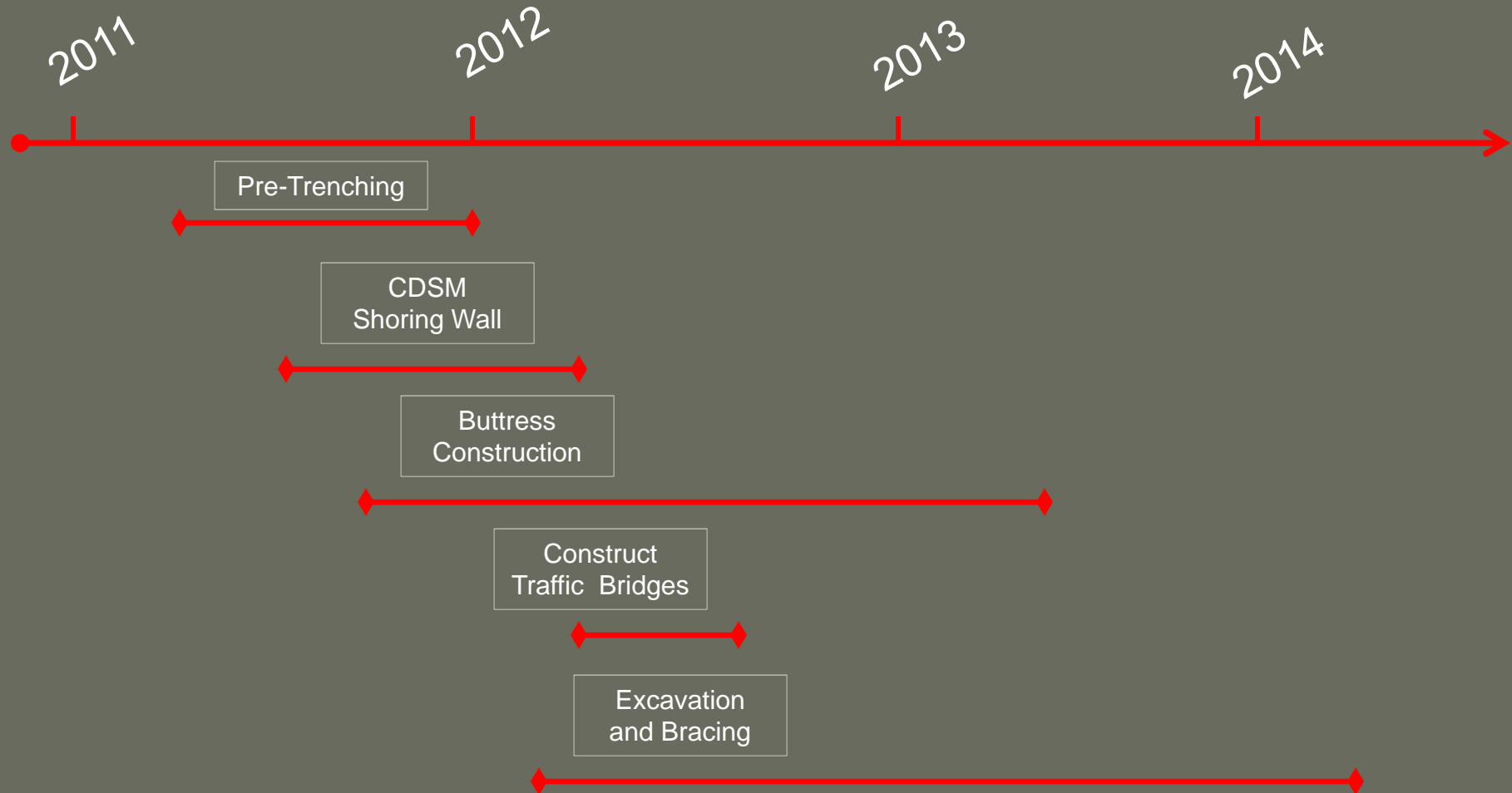
TJPA





Transbay Transit Center

BSE Timeline Summary





Transbay Transit Center

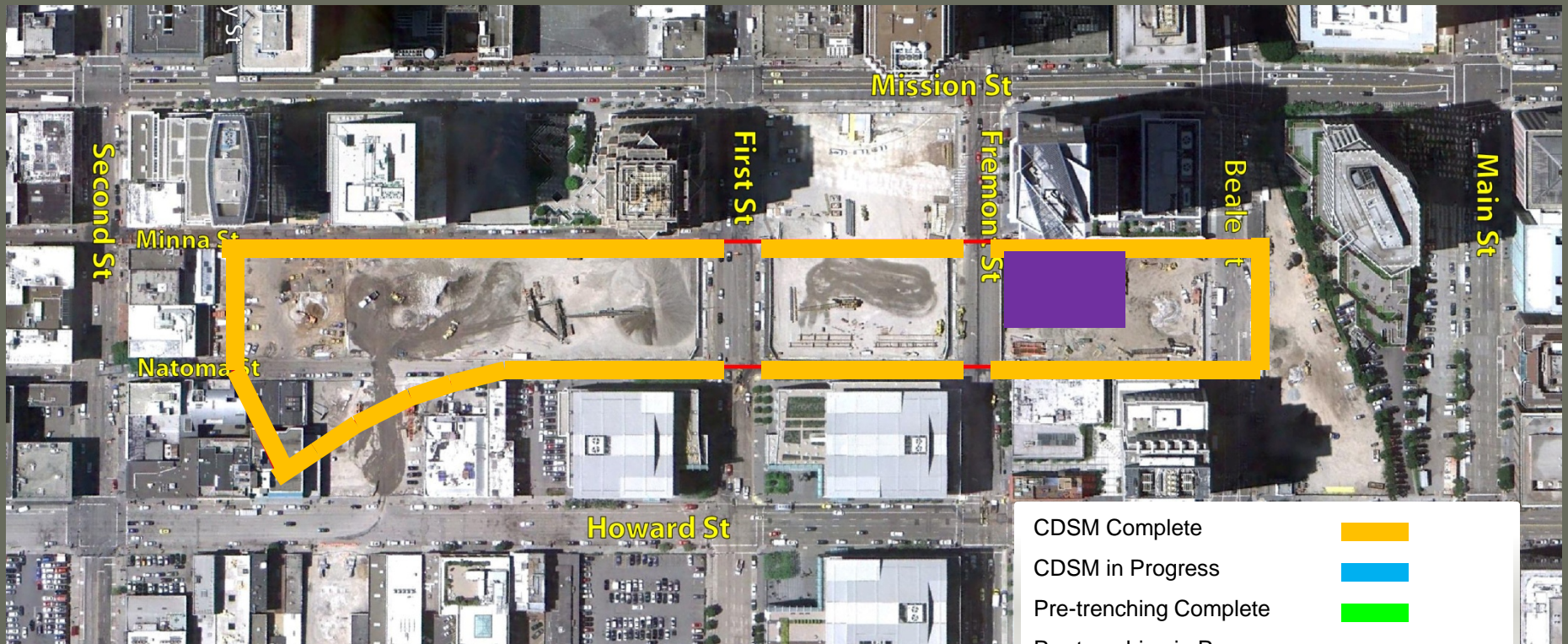
December 1, 2011 BSE Status

2011

2012

2013

2014



- CDSM Complete 
- CDSM in Progress 
- Pre-trenching Complete 
- Pre-trenching in Progress 
- Buttress Work in Progress 



Transbay Transit Center

East Section Progress (Zone 4)



End of October 2011

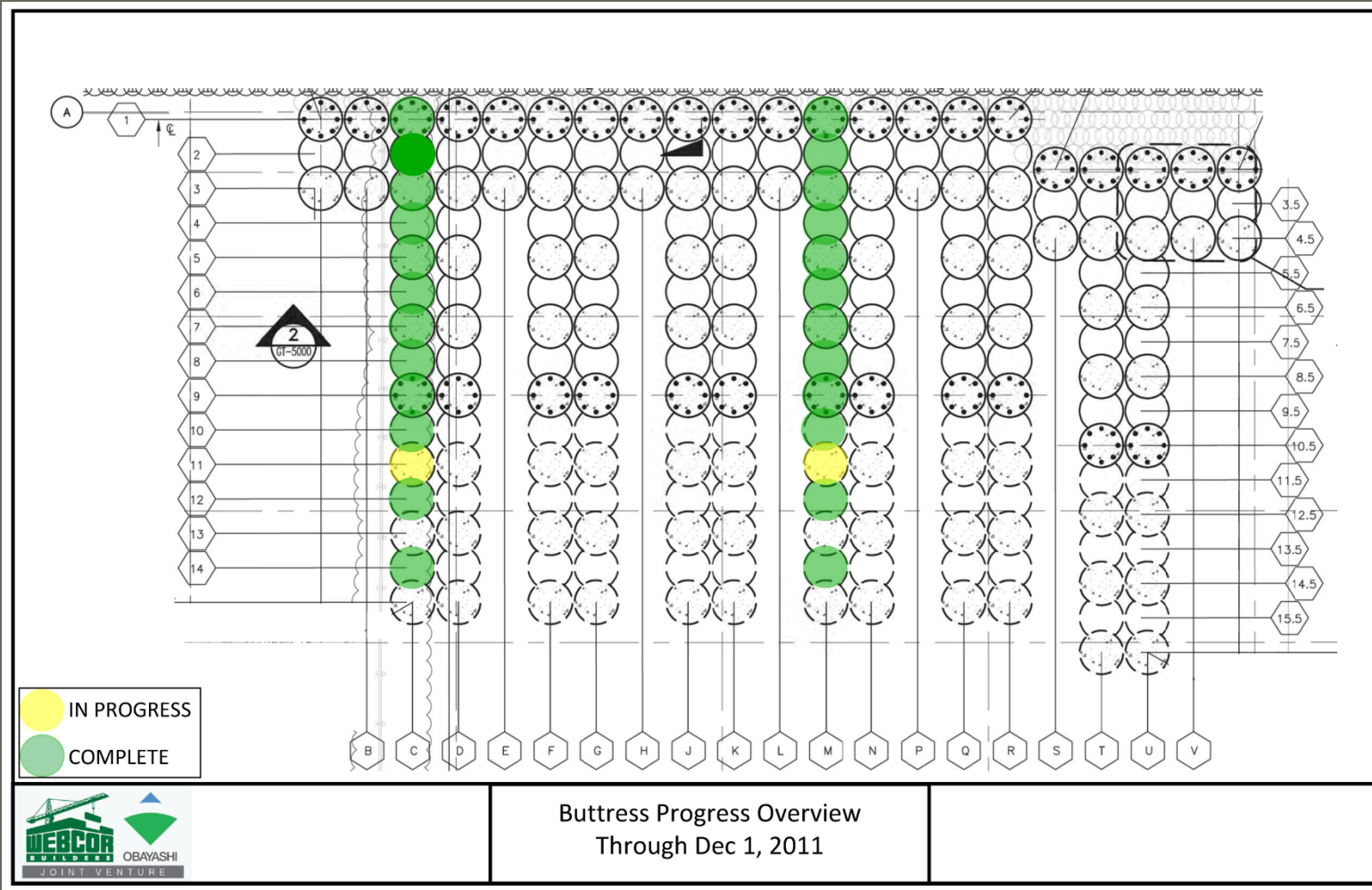


End of November 2011



Transbay Transit Center

Buttress Progress





Transbay Transit Center

Buttress Progress





Transbay Transit Center

Buttress Progress





Transbay Transit Center

Buttress Shaft – Quality Control





Transbay Transit Center

Central and West Sections Progress



End of October 2011



End of November 2011



Transbay Transit Center

CDSM Operations – The Final Wall Section

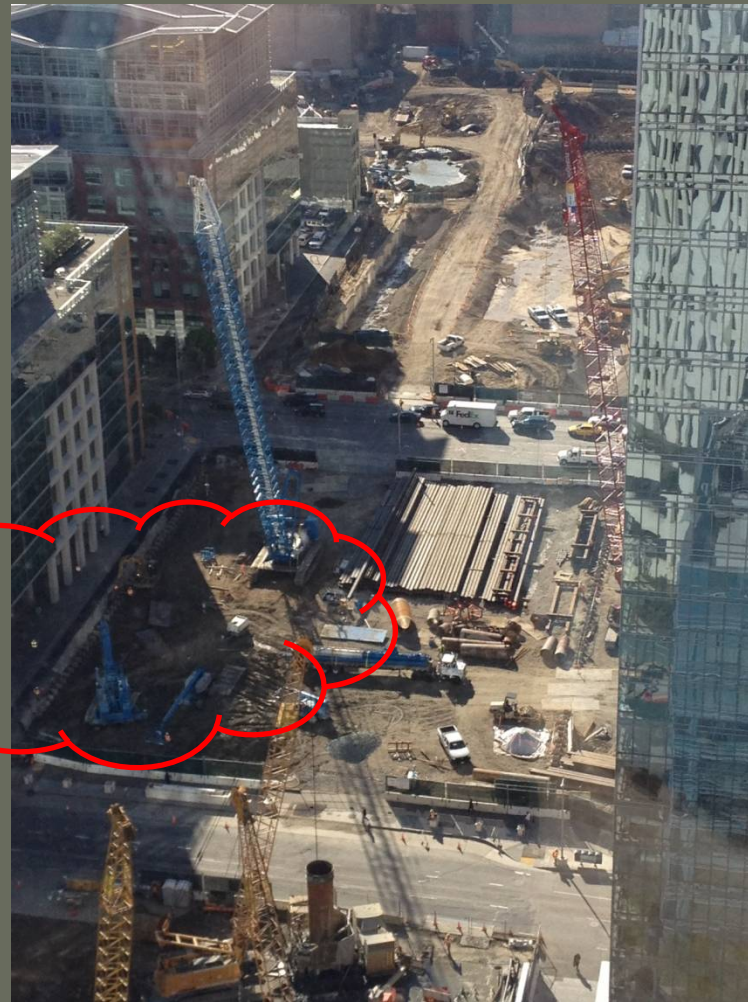
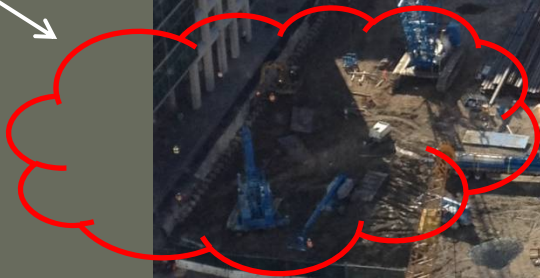




Transbay Transit Center

CDSM Operations – Equipment Demobilizes

CDSM Rig Demobilization





Transbay Transit Center

Re-Exposing Foundations – Zones 1 and 2





Transbay Transit Center

Re-Exposing Foundations – Zones 1 and 2





Transbay Transit Center

Utility Relocation



Restoration of Natoma St. at 2nd Street



Potholing for AWSS on Mission Street



Transbay Transit Center

Phase II PG&E Infrastructure – First Street





Transbay Transit Center

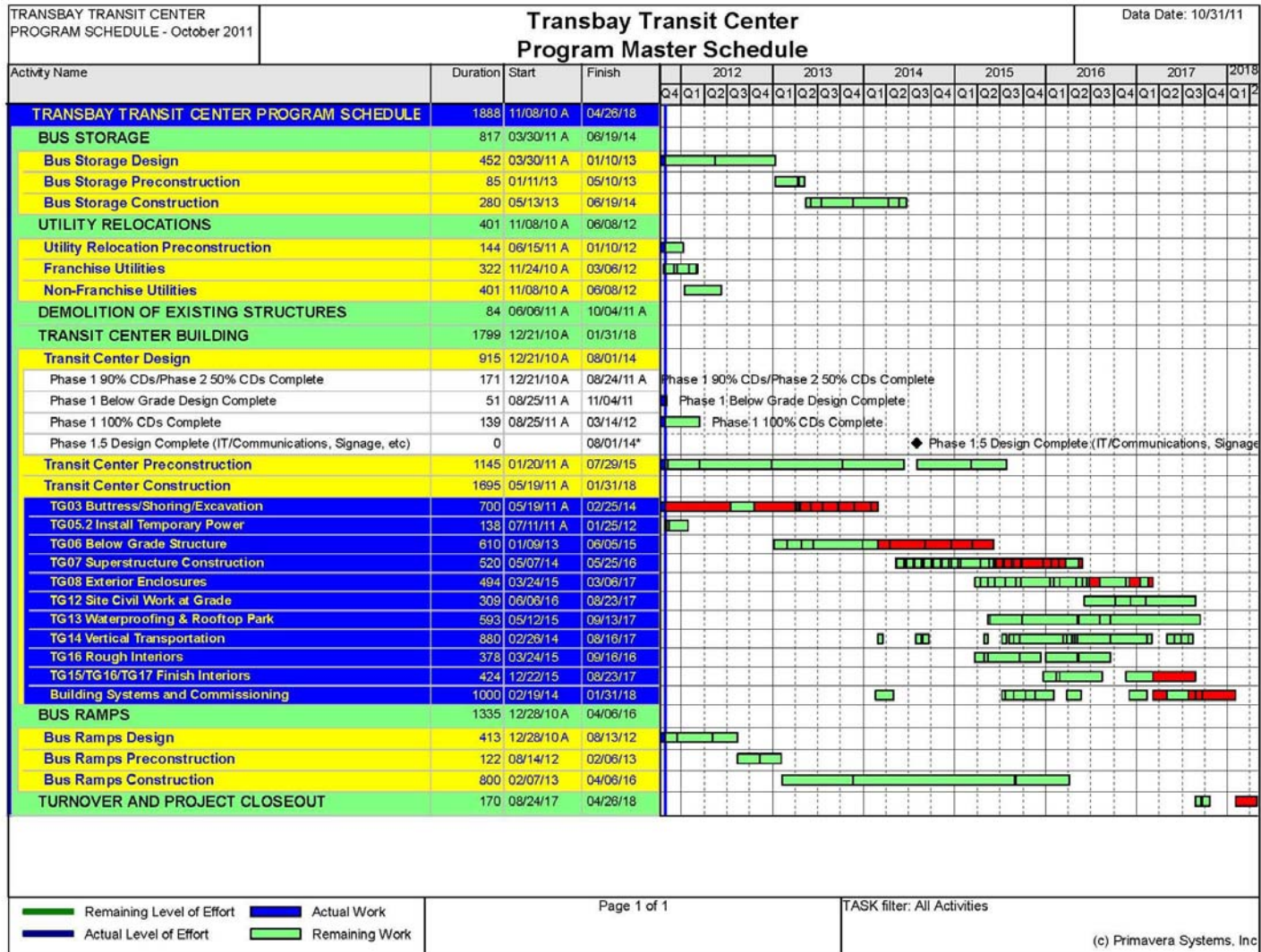
Phase 1 Budget Status

Phase 1 Facilities	Baseline Budget	Current Budget	Commitments	Incurred to-date
Transit Center Design	\$143,050,012	\$154,869,175	\$110,435,121	\$98,673,855
Transit Center Construction	\$909,661,142	\$913,654,847	\$243,978,514	\$44,507,265
Temporary Terminal	\$25,338,694	\$25,817,656	\$25,742,640	\$25,729,201
Bus Ramps	\$40,187,781	\$49,413,705	\$474,406	\$455,525
Bus Storage	\$22,936,000	\$23,985,000	\$3,992,202	\$2,670,698
Utility Relocation	\$65,584,538	\$30,037,148	\$27,155,482	\$18,221,793
Demolition	\$16,223,430	\$16,975,586	\$15,828,984	\$14,032,264
ROW Acquisition	\$71,858,341	\$71,858,341	\$69,513,952	\$69,513,952
ROW Support	\$5,346,038	\$5,464,239	\$3,450,667	\$3,428,651
Programwide	\$243,570,024	\$254,710,359	\$127,509,613	\$108,993,246
Program Reserve	\$45,244,000	\$42,213,944	\$0	\$0
TOTALS: Phase 1 Program	\$1,589,000,000	\$1,589,000,000	\$628,081,581	\$386,226,450



Transbay Transit Center

Phase 1 Program Schedule Status





Transbay Transit Center

Bay Area Labor – Trade Packages

- To date, Webcor / Obayashi's Trade Subcontractors have worked a total of:

157,330 Craft Hours

- To date, Bay Area Labor has contributed 105,124 hours, or 67% of the total Craft Hours.



Transbay Transit Center

Bay Area Regional Labor Breakdown

Labor by Area:	November 2011	
Location	Total hours	Hour Percent
East Bay (Alameda, Contra Costa, Solano)	47,931	30%
North Bay (Marin, Napa, Sonoma)	4,193	3%
South Bay (San Mateo, Santa Clara)	14,406	9%
San Francisco	38,594	25%
Other	52,206	33%
Total	157,330	100%



Transbay Transit Center

Questions?