

Facility Operations Update

Citizens Advisory Committee
September 6, 2022



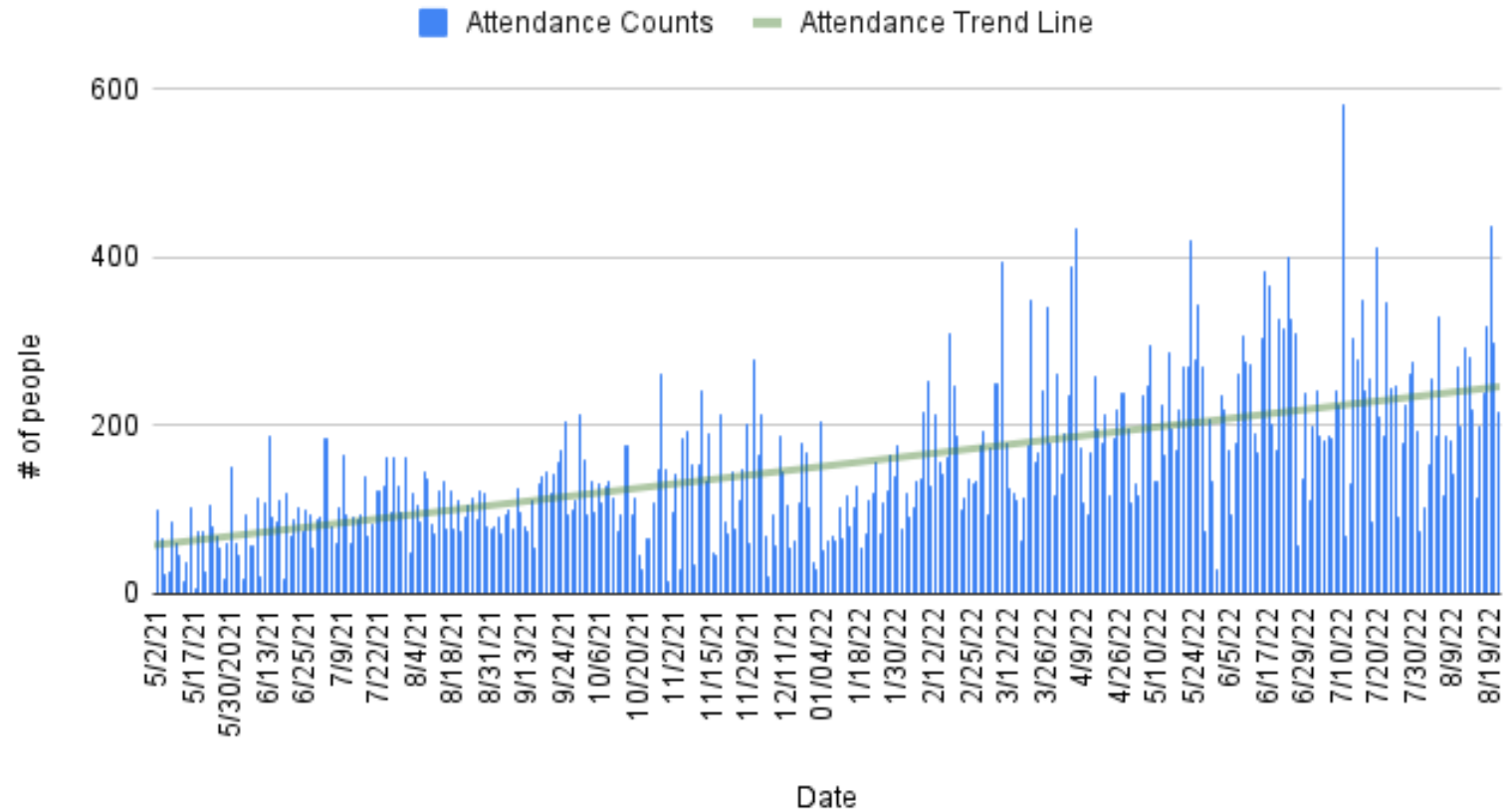
Popular Programs

Jazz, Saturday Sounds, Lunchbox Music, Mucho Mambo Salsa Night, Yoga, Zumba, and Bollywood Nights



Park Attendance

Salesforce Park Full Park Counts May 2021 - August 21 2022



Friday, August 19, 2022, had 400+ Visitors!

Return to Work and Ridership

Colliers |

San Francisco Office Market Update Return to Office Update

San Francisco continues to outpace Silicon Valley in return to work

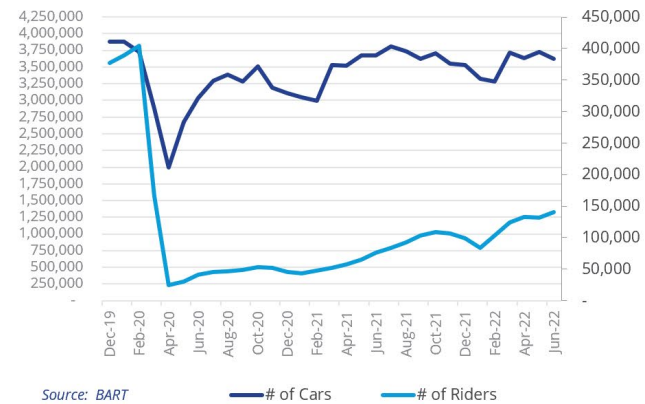
Kastle Card Swipes: Office Building Occupancy Percentage



Source: Kastle
Compiled By Research

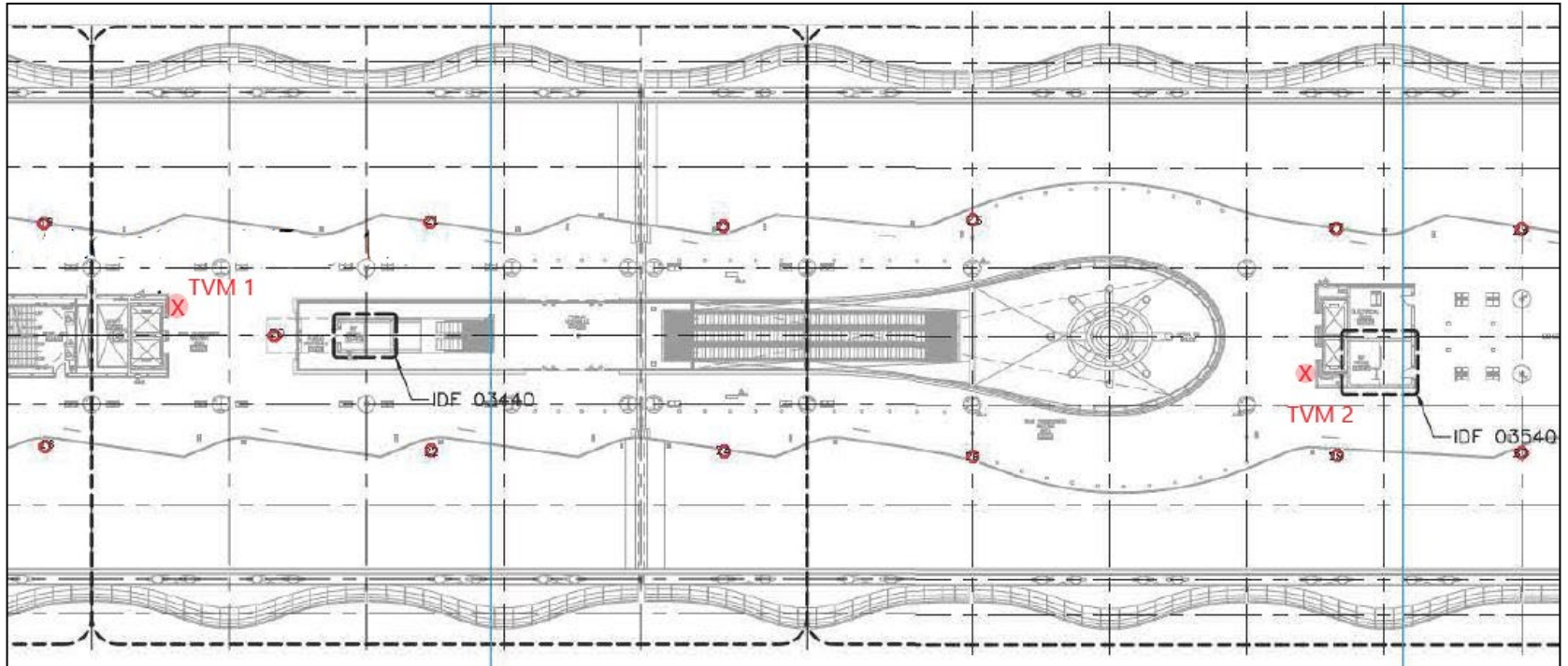
BART Ridership remains down from pre-pandemic activity but slowly trending up. Bay Bridge remains flat evidence of WFH model

Bay Bridge VS BART Activity



Source: BART

Transit Center Improvements



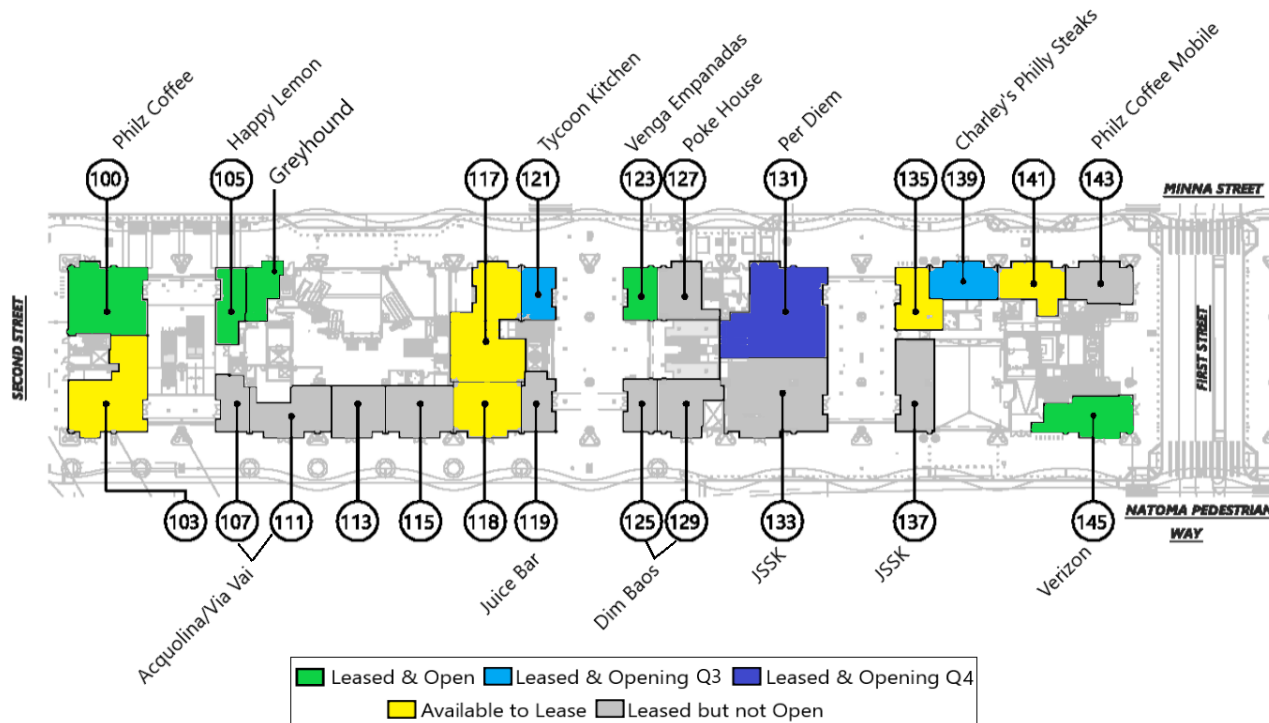
Two new Clipper Card (TVM) machines coming to the bus deck

Retail Leasing Update



Retail Opening Update

OPENING Q3	OPENING Q4
CHARLEY'S PHILLY STEAKS	BAREBOTTLE
TYCOON KITCHEN	PER DIEM



Tycoon Kitchen and Charley's Philly Steaks

Planned Opening September 2022



Per Diem and BareBottle

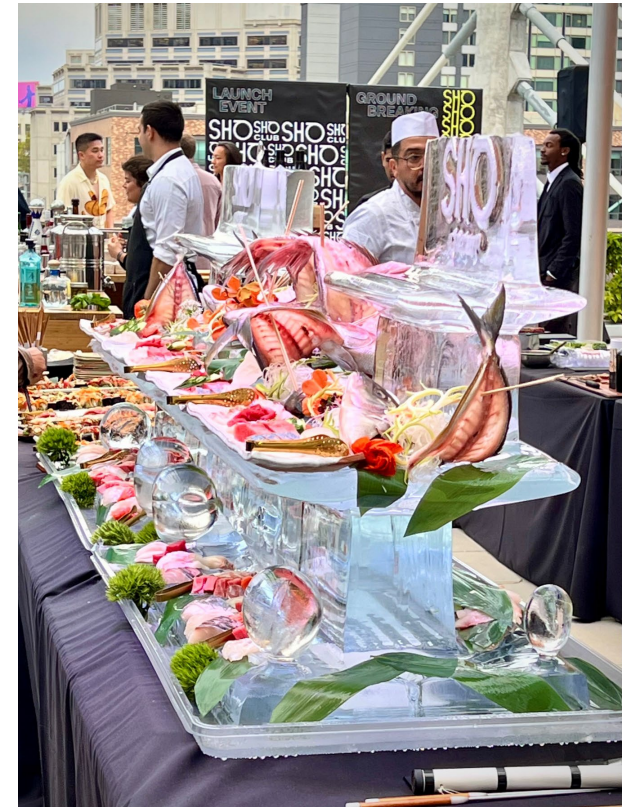
Planned Opening in October 2022



SHŌ Groundbreaking

Construction to begin in Winter 2022

Grand opening expected in Winter 2023



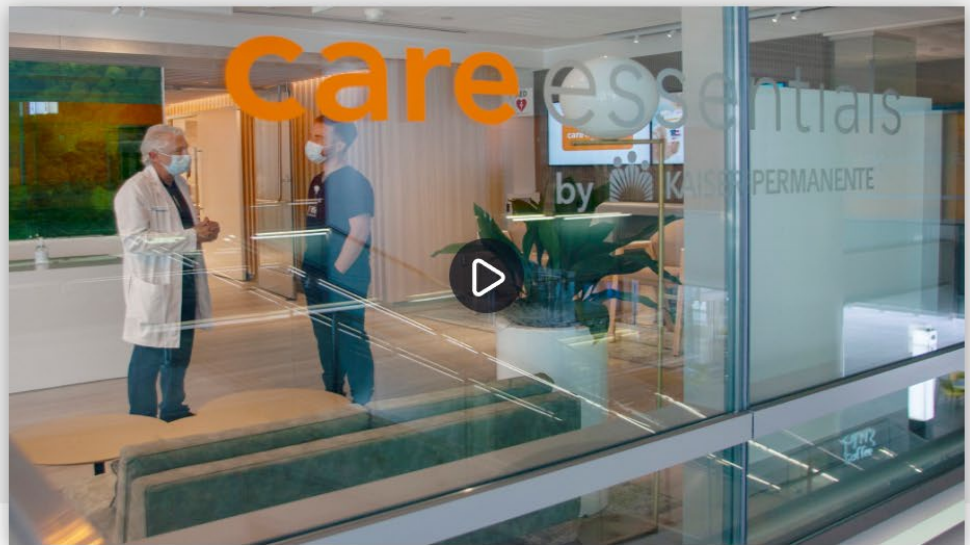
Kaiser at the Salesforce Transit Center

*Promoted in the August CCSF Health Services System Board email
(over 50,000 recipients)*

Convenience is key at new San Francisco medical clinic

Care Essentials by Kaiser Permanente is a first-of-its-kind clinic offering care where and when you need it and is a model for future openings in busy urban areas. Pictured, Joseph Elson, MD, at left, and Sean Luis, a nurse practitioner, are the 2 clinicians who will see patients at the new clinic.

[Douglas Oakley](#)
May 19, 2022



Kaiser Permanente opened a new 4,000-square-foot clinic in the Salesforce Transit Center in downtown San Francisco on May 17 for commuters, residents, and visitors that offers same-day and walk-in doctor's visits, a laboratory, and pharmacy services.

The Care Essentials clinic, a first of its kind in Northern California, is inspired by similar Kaiser Permanente sites in Southern California Target stores and in Bartell Drugs stores in Washington state.



Thank You

TJPA
TRANSBAY JOINT POWERS AUTHORITY

425 Mission Street, Suite 250 San Francisco, CA 94105 ☎ 415.597.4620 🌐 www.tjpa.org