

San Francisco Peninsula Rail Program Executive Steering Committee

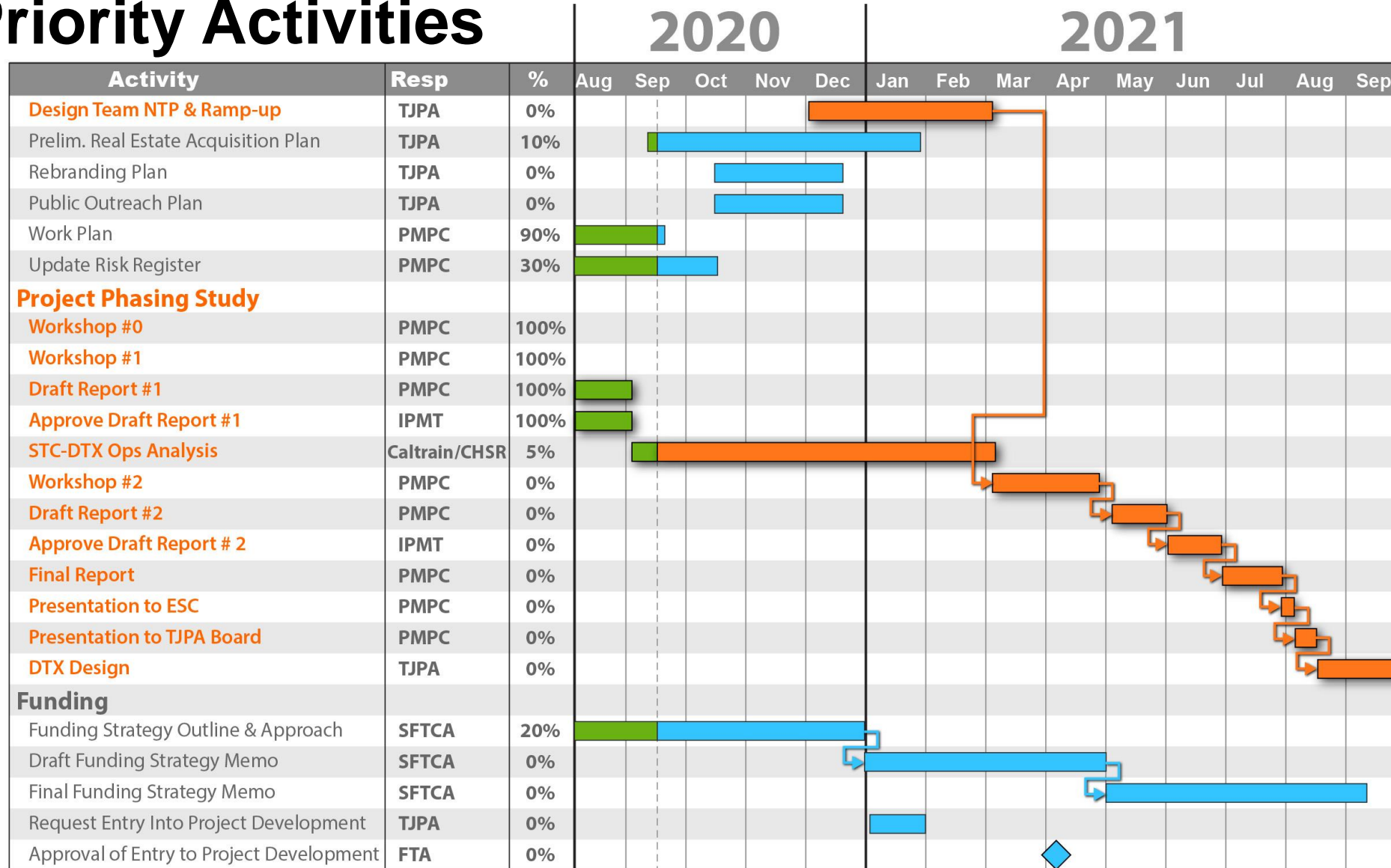
Item 6 - Update on Critical Path Schedule
Integrated Program Management Team (IPMT) Report

September 18, 2020

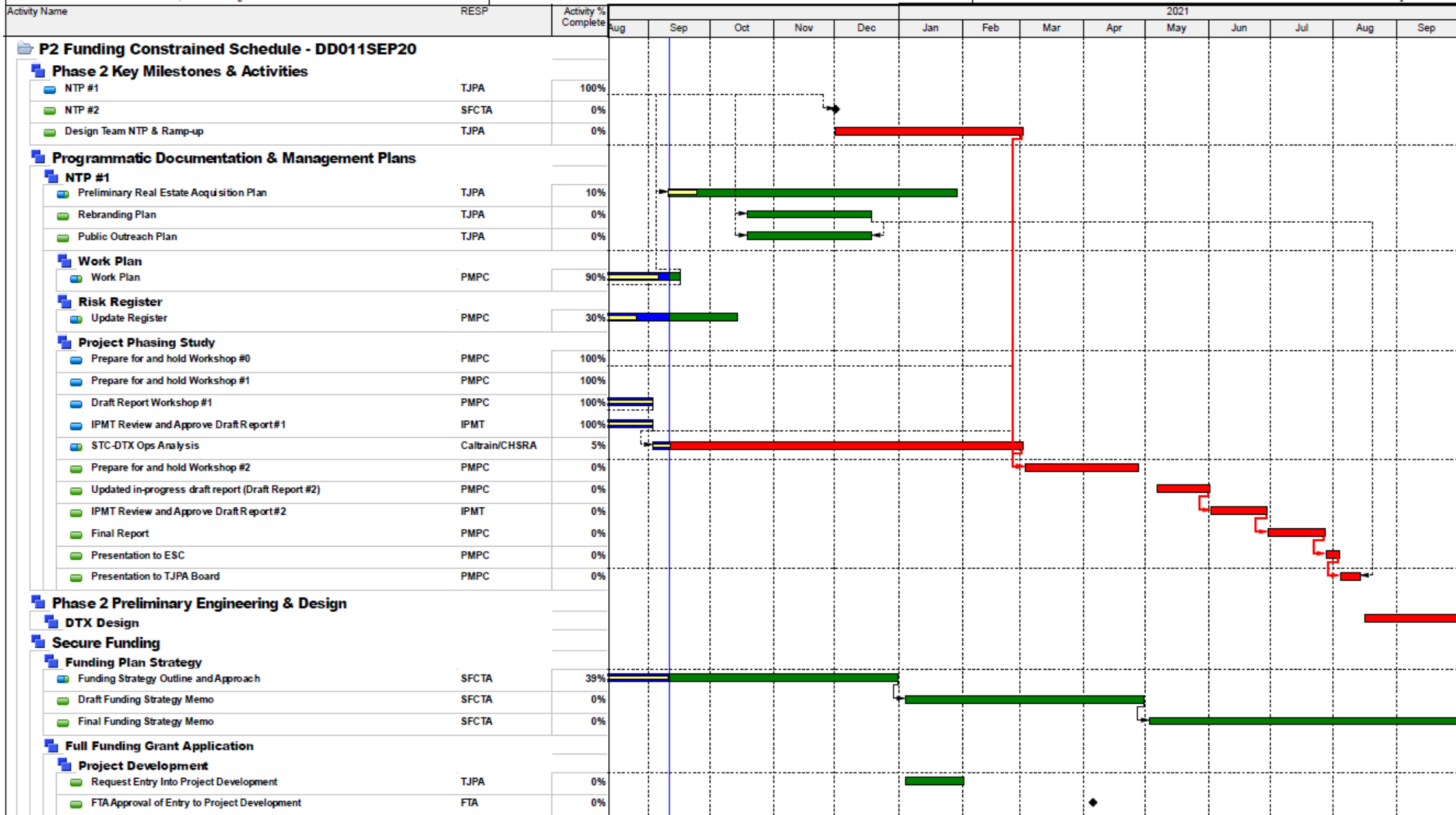


San Francisco
County Transportation
Authority

Priority Activities



■ Completed Work
 ■ Remaining Work
 ■ Critical Path Remaining Work



Questions

