



Construction Update

January 12, 2012

Transbay Transit Center

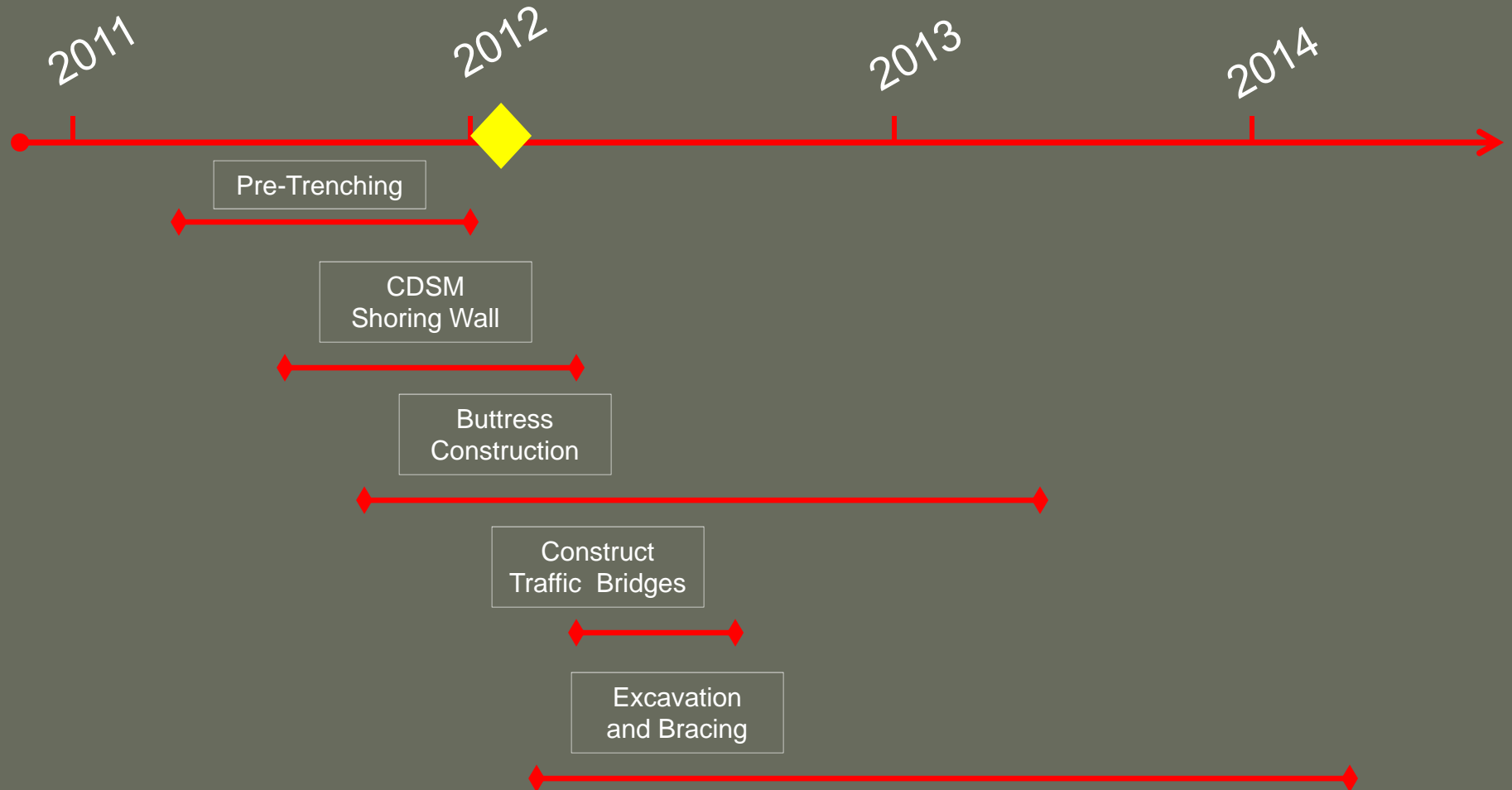
TJPA





Transbay Transit Center

BSE Timeline Summary





Transbay Transit Center

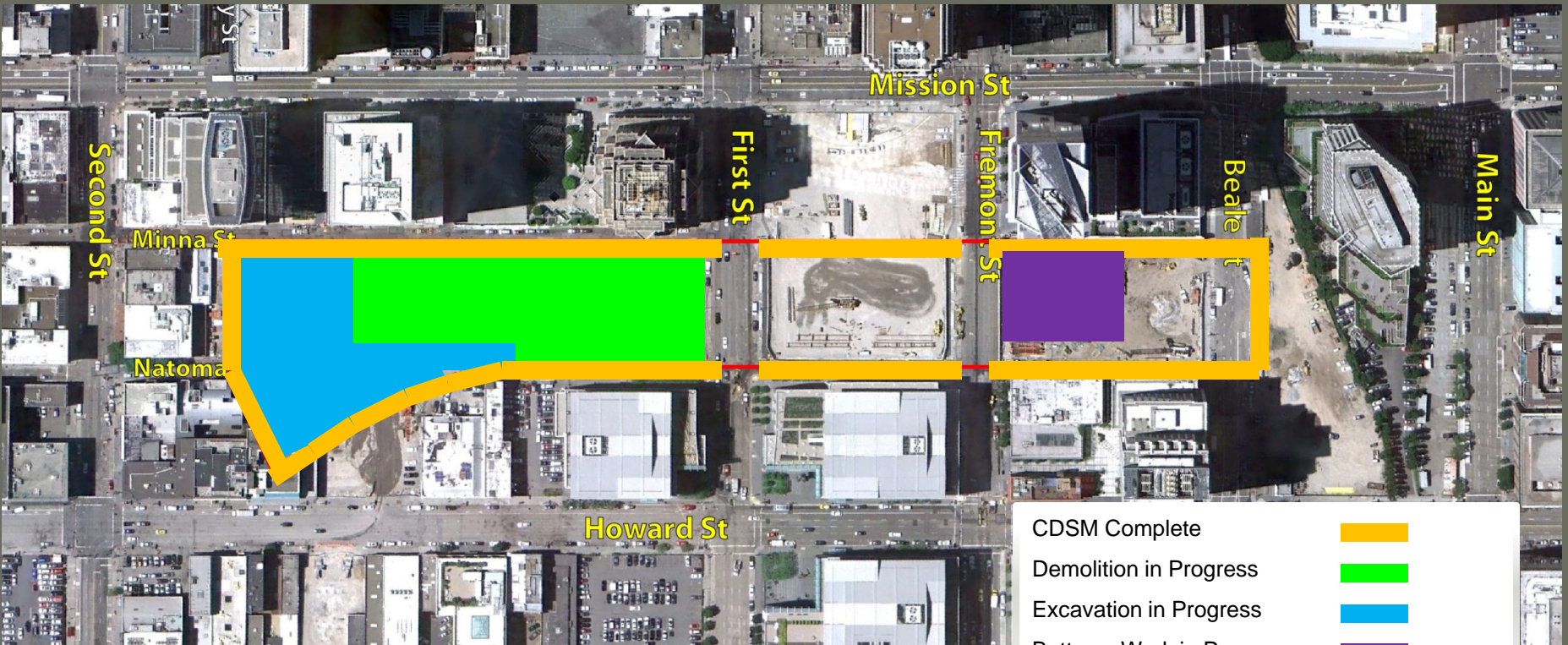
December 1, 2011 BSE Status

2011

2012

2013

2014





Transbay Transit Center

East Section Progress (Zone 4)



End of November 2011

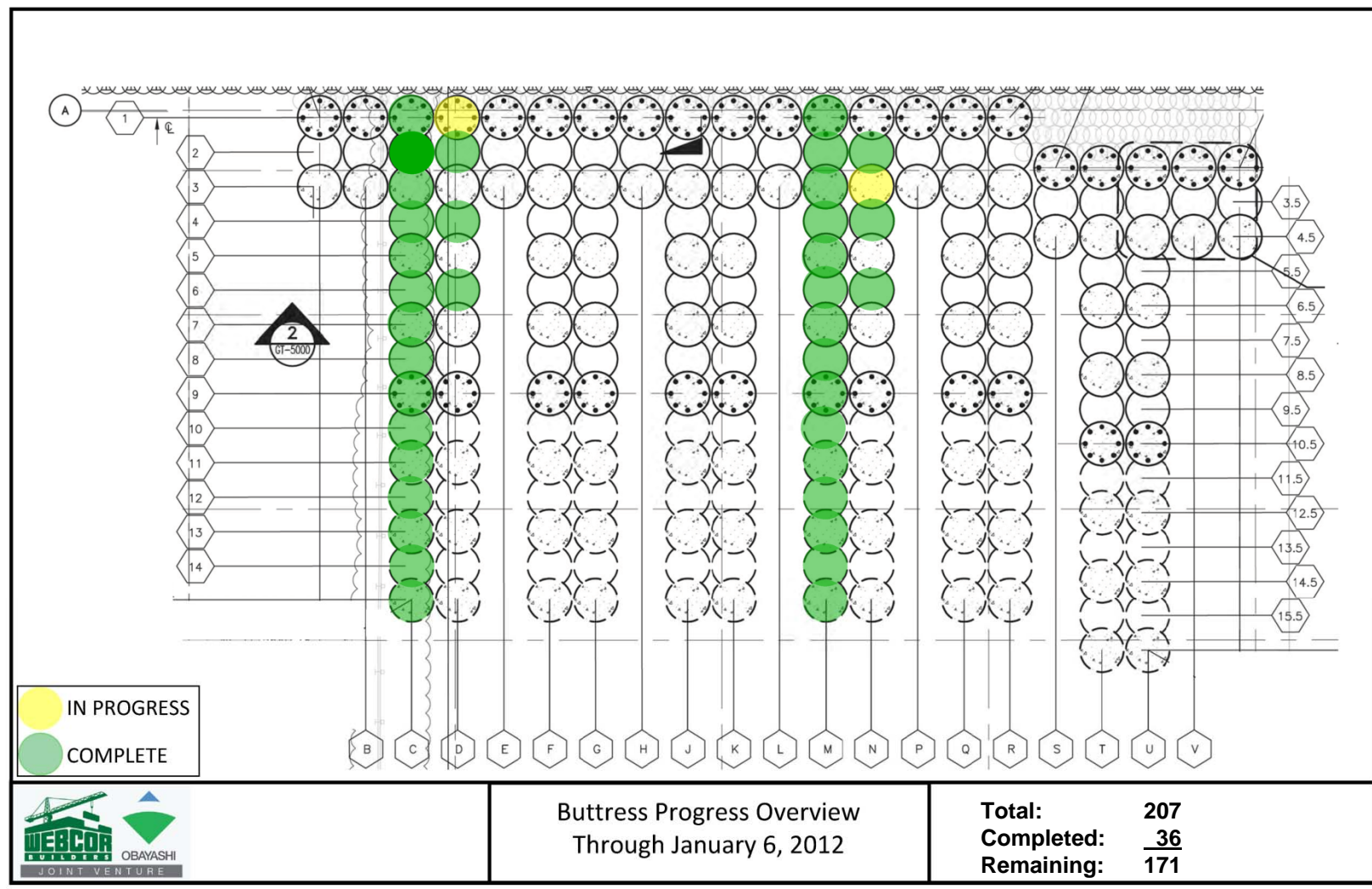


End of December 2011



Transbay Transit Center

Buttress Progress





Transbay Transit Center

Buttress Progress





Transbay Transit Center

Buttress Progress





Transbay Transit Center

Central and West Sections Progress



End of November 2011



End of December 2011



Transbay Transit Center

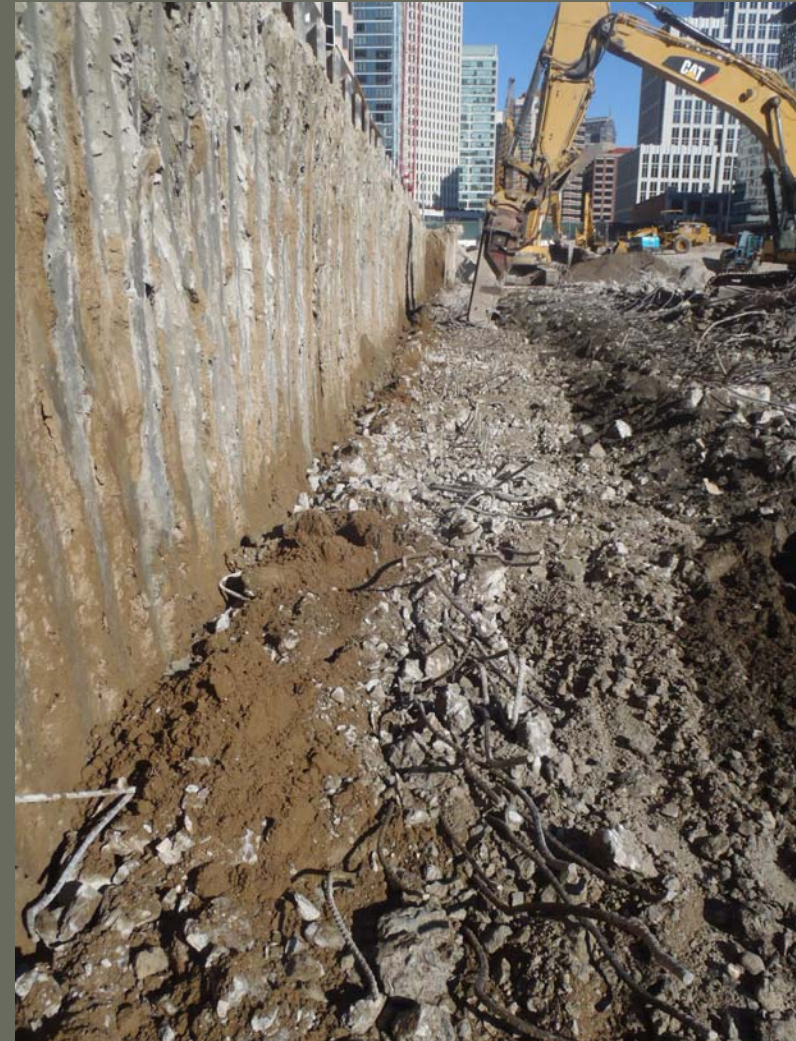
Wall and Foundation Demolition – Zones 1 and 2





Transbay Transit Center

Wall and Foundation Demolition – Zones 1 and 2





Transbay Transit Center

Excavation – Zones 1 and 2





Transbay Transit Center

Excavation – Zones 1 and 2





Transbay Transit Center

Archaeology– Zone 1



12/16/2011



Transbay Transit Center

Archaeology– Zone 1





Transbay Transit Center

Utility Relocation - Natoma Street Restoration



Restoration of Natoma St. behind 400 Howard Street



Natoma Street open



Transbay Transit Center

Phase II PG&E Infrastructure – First Street





Transbay Transit Center

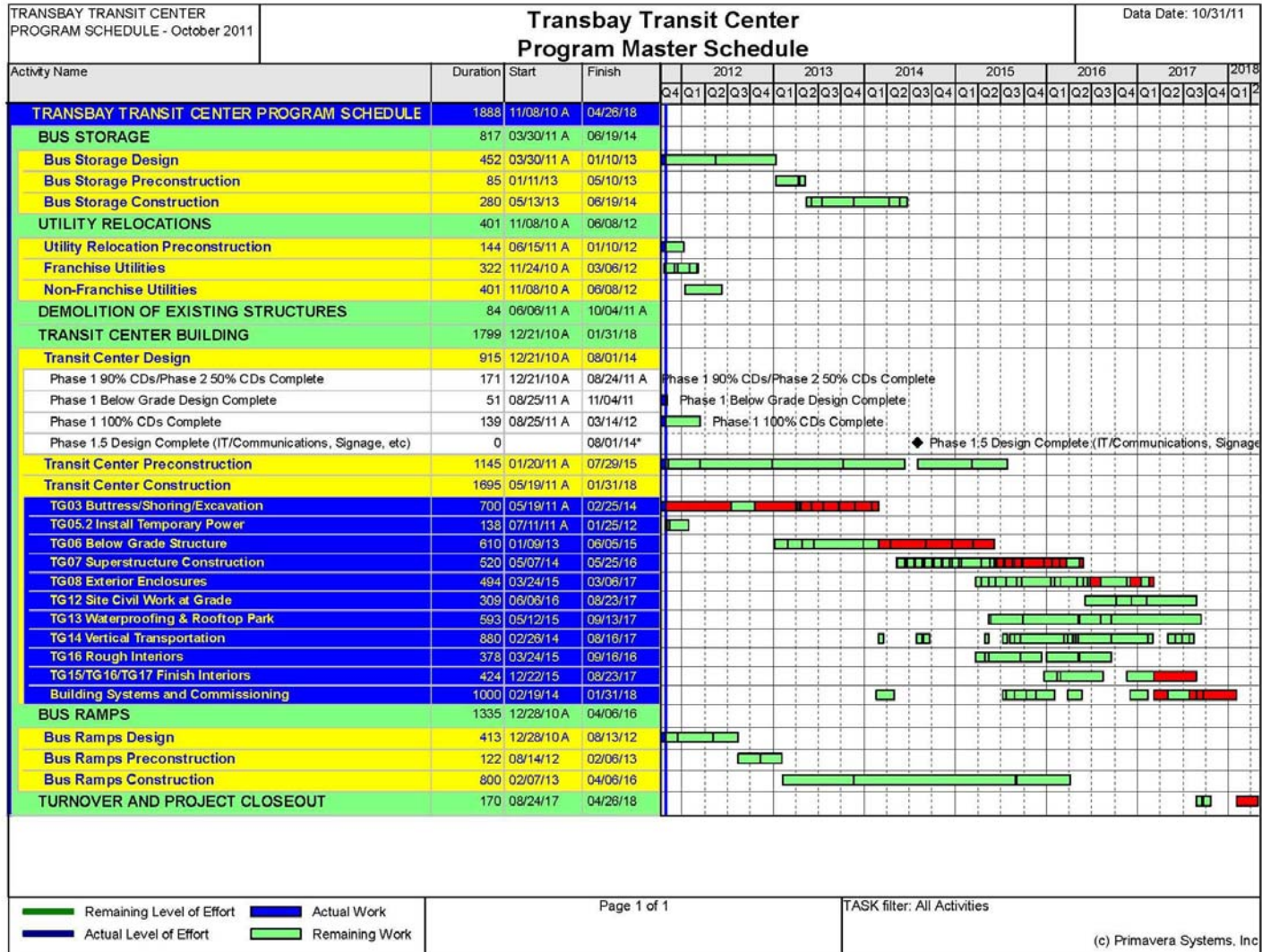
Phase 1 Budget Status

Phase 1 Facilities	Baseline Budget	Current Budget	Commitments	Incurred to-date
Transit Center Design	\$143,050,012	\$154,869,175	\$110,435,121	\$100,093,236
Transit Center Construction	\$909,661,142	\$913,878,847	\$243,978,514	\$52,194,999
Temporary Terminal	\$25,338,694	\$25,817,656	\$25,742,640	\$25,729,201
Bus Ramps	\$40,187,781	\$49,413,705	\$474,406	\$457,969
Bus Storage	\$22,936,000	\$23,985,000	\$3,992,202	\$2,706,128
Utility Relocation	\$65,584,538	\$30,410,163	\$27,155,682	\$18,493,124
Demolition	\$16,223,430	\$16,976,586	\$15,829,984	\$14,032,264
ROW Acquisition	\$71,858,341	\$71,858,341	\$69,513,952	\$69,513,952
ROW Support	\$5,346,038	\$5,464,239	\$3,619,338	\$3,506,537
Programwide	\$243,570,024	\$254,710,359	\$128,629,764	\$111,012,828
Program Reserve	\$45,244,000	\$41,615,929	\$0	\$0
TOTALS: Phase 1 Program	\$1,589,000,000	\$1,589,000,000	\$629,371,602	\$397,740,238



Transbay Transit Center

Phase 1 Program Schedule Status





Transbay Transit Center

Bay Area Labor – Trade Packages

- To date, Webcor / Obayashi's Trade Subcontractors have worked a total of:

183,574 Craft Hours

- To date, Bay Area Labor has contributed 122,195 hours, or 67% of the total Craft Hours.



Transbay Transit Center

Bay Area Regional Labor Breakdown

Labor by Area:	Through December 2011	
Location	Total hours	Hour Percent
East Bay (Alameda, Contra Costa, Solano)	54,370	30%
North Bay (Marin, Napa, Sonoma)	5,167	3%
South Bay (San Mateo, Santa Clara)	17,312	9%
San Francisco	45,345	25%
Other	61,380	33%
Total	183,574	100%



Transbay Transit Center

Questions?