



Archaeology and the Transbay Transit Center Program

Transbay Transit Center

TJPA





Transbay Transit Center

Determining Where to Test

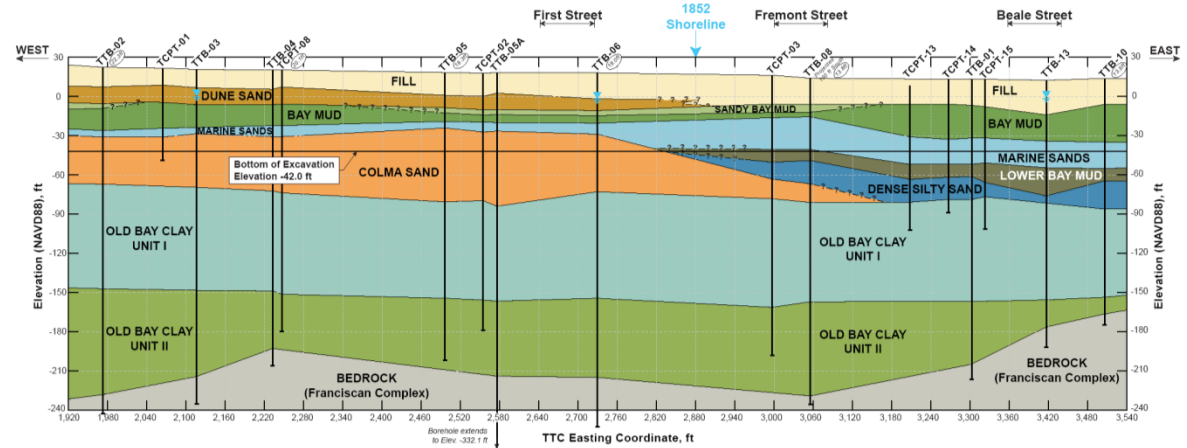


Transbay Transit Center

History of Land Formation

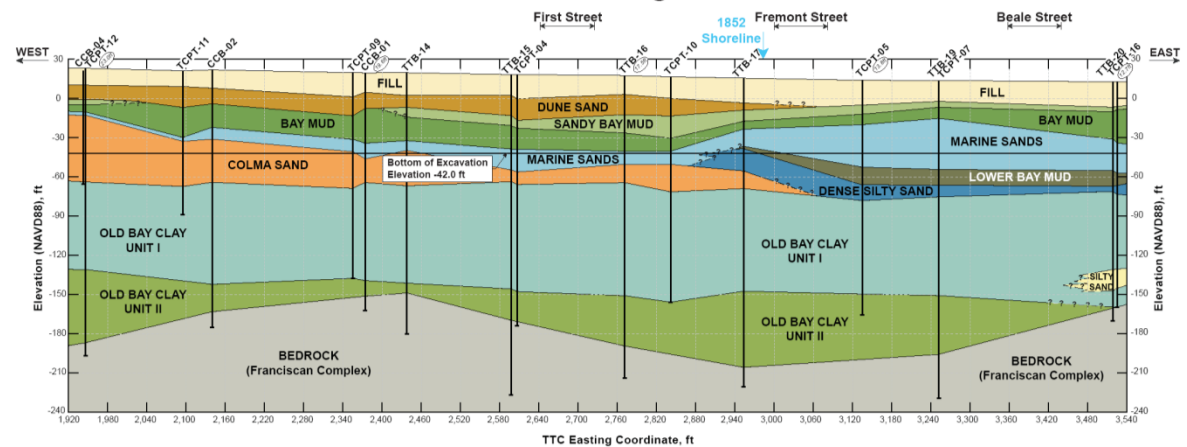
- Geotechnical bores provide a picture of how the land surface changed over time.

Transbay Transit Center
Subsurface Section Along Minna Street



- Sequence helps establish potential for archaeological resources.

Transbay Transit Center
Subsurface Section Along Natoma Street

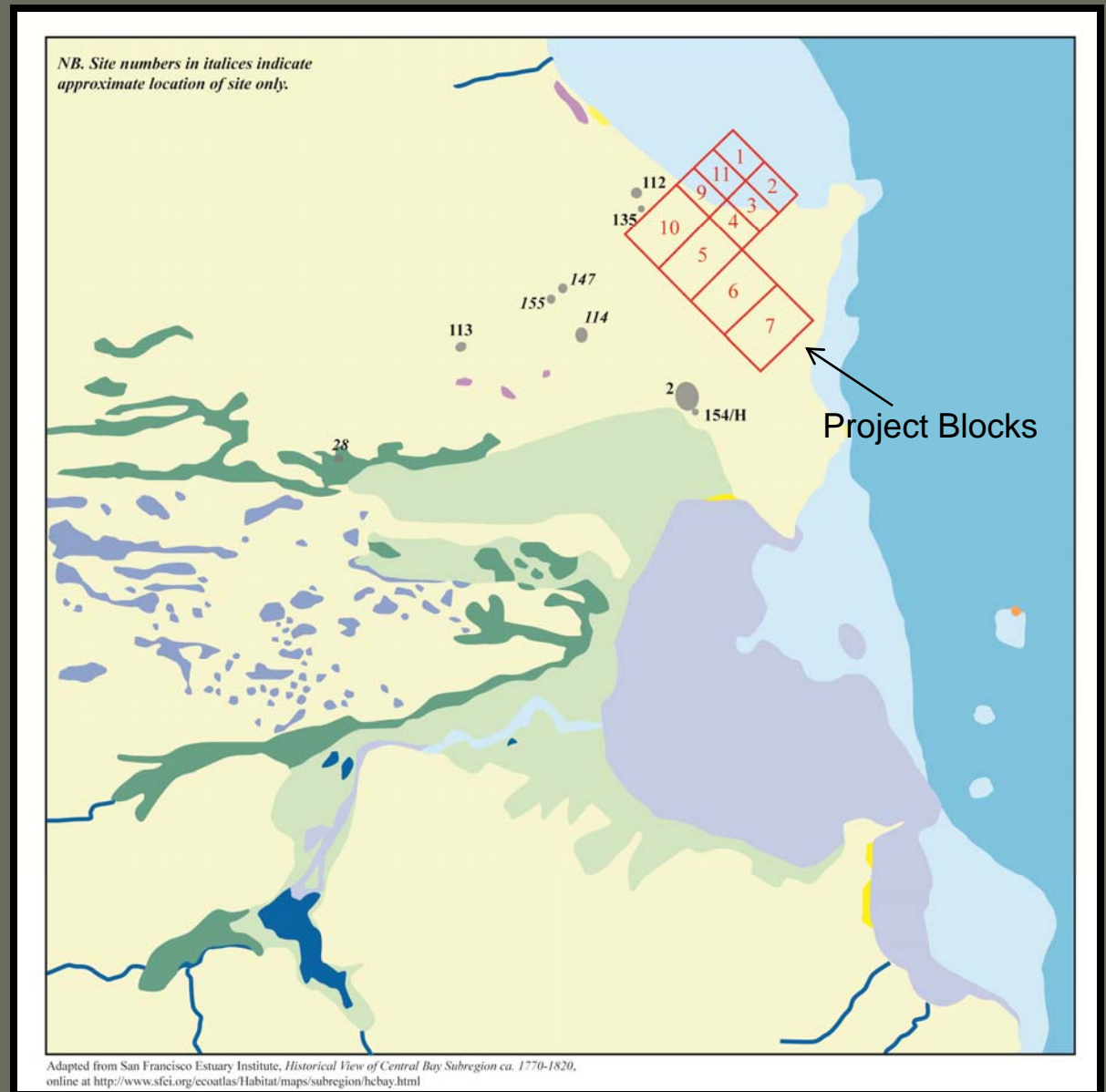




Transbay Transit Center

Prehistory

- Locations of known prehistoric archaeological sites allow archaeologists to create a predictive model for determining where unknown sites are most likely to exist.

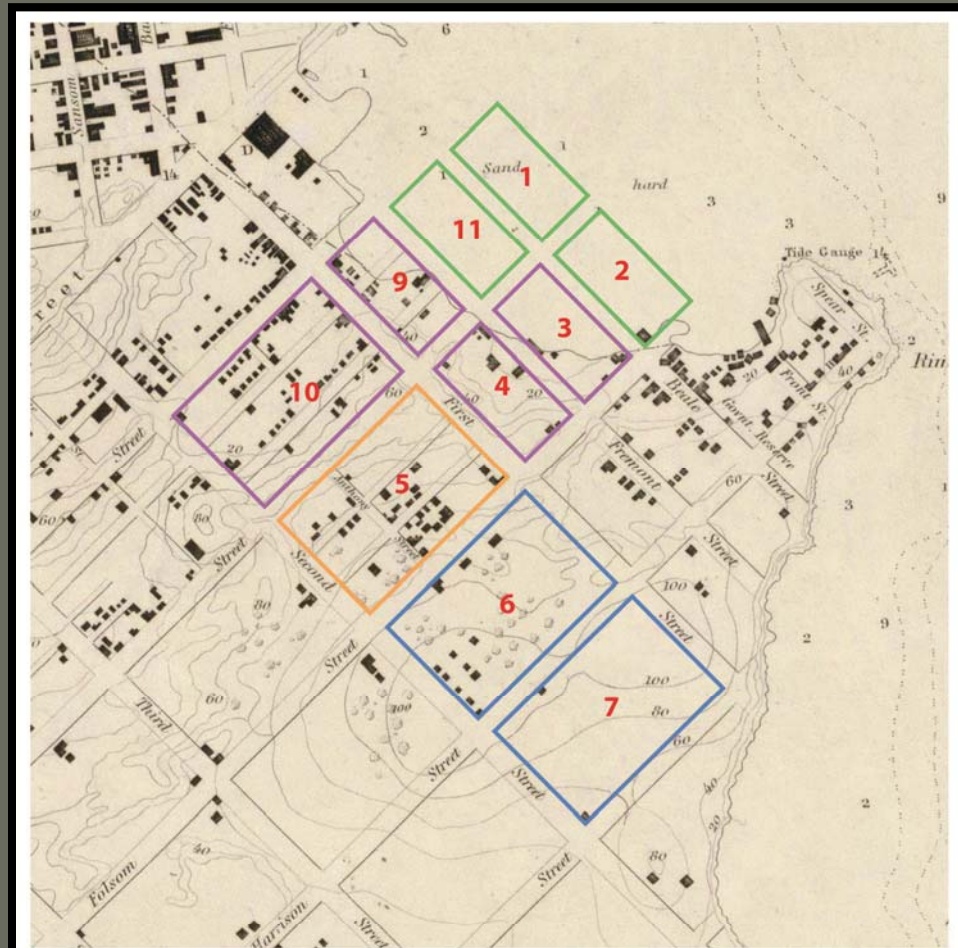




Transbay Transit Center

Gold Rush Era

- The US Coast Survey Map of 1853 depicts the historic shoreline of San Francisco.
- The project area is partially located in what was the waters of Yerba Buena Cove.



1853 US Coast Survey Map. Courtesy David Rumsey Map Collection.



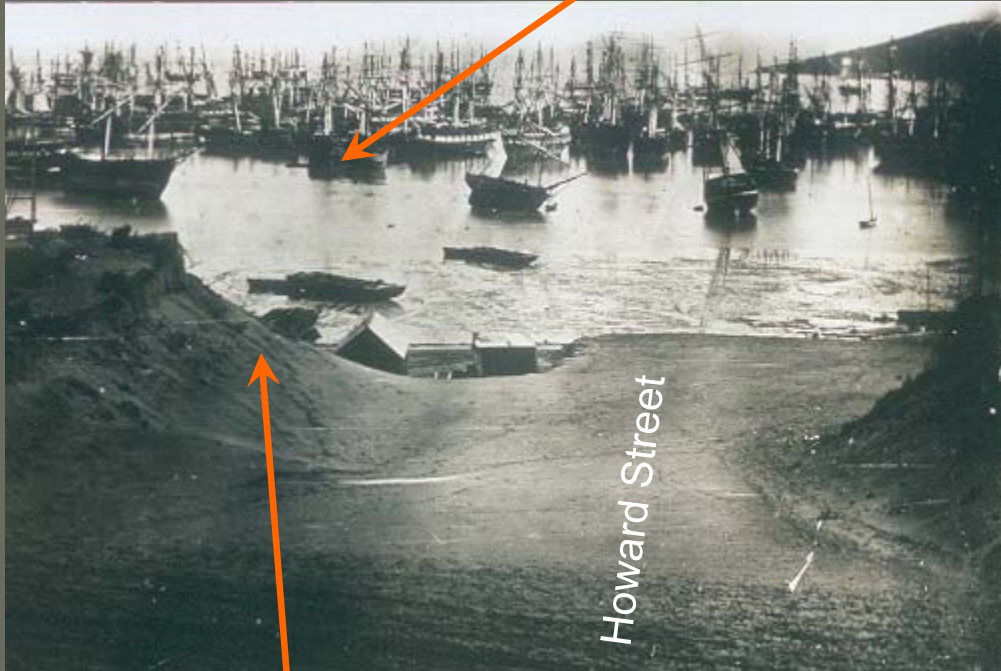
- Yerba Buena Cove
- Happy Valley
- Pleasant Valley
- Rincon Hill



Transbay Transit Center

View from Rincon Hill, 1851

Block 11 within the waters of the cove



Block 9 sloping down to the water's edge

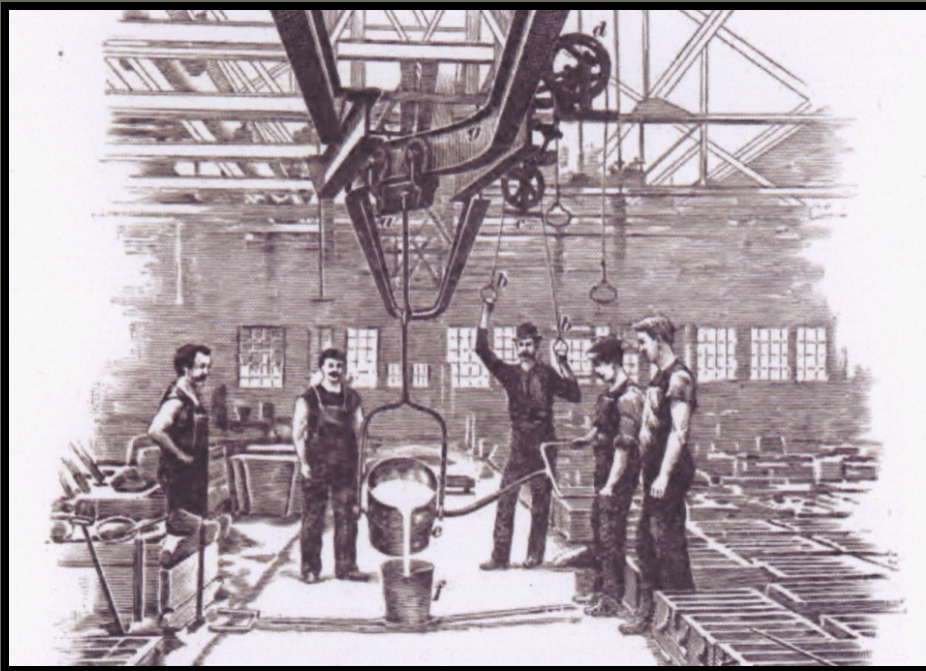


Transbay Transit Center

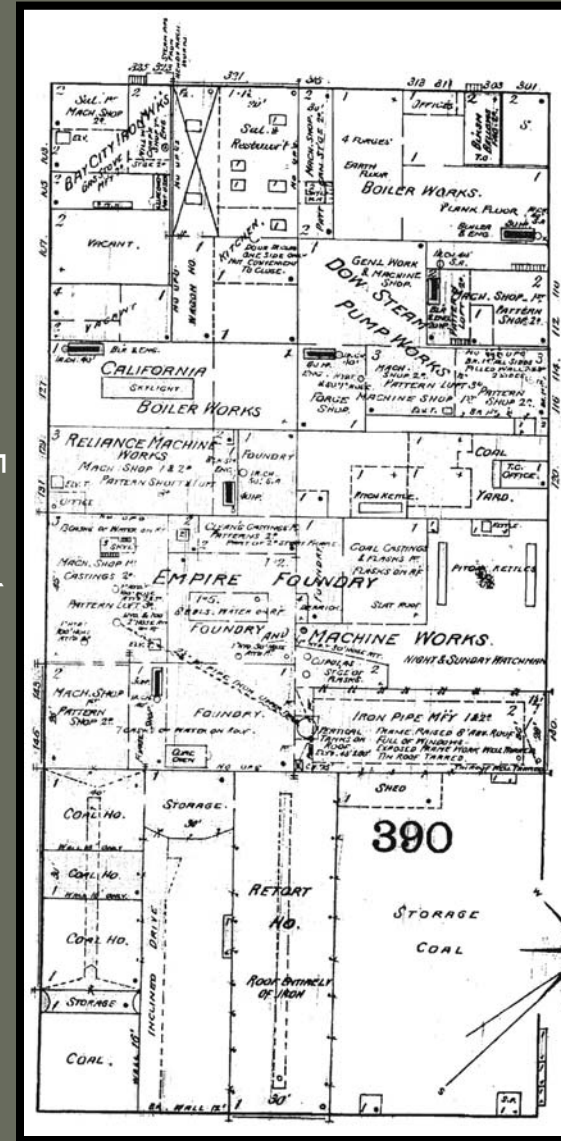
Industrial Expansion

Mission

The 1887 Sanborn Fire Insurance Map provides detailed footprints of the many industrial enterprises, including foundries, machine works, boiler works, and pump works that were established in the project area.



Fremont



Beale

Howard



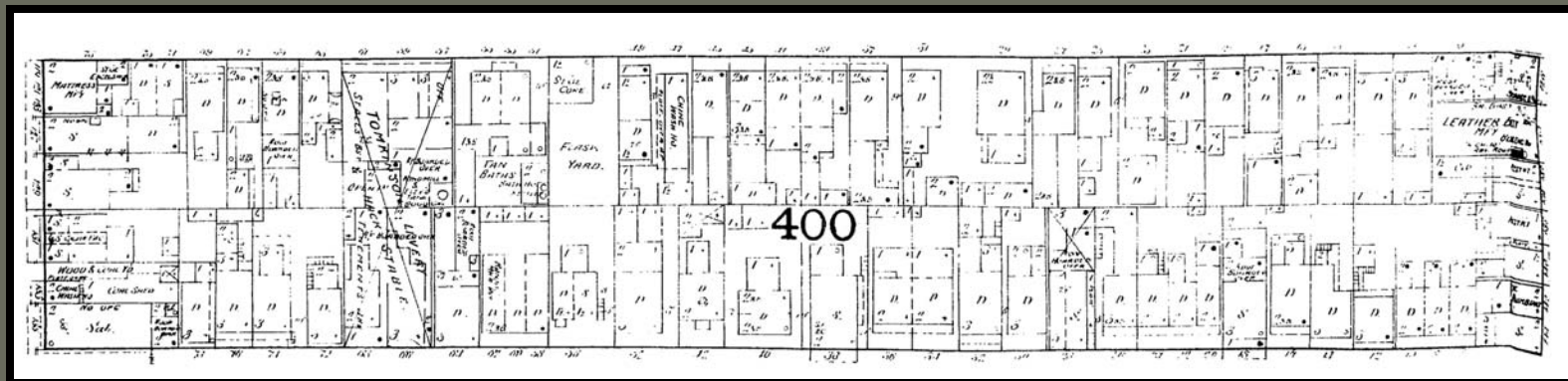
Transbay Transit Center

Living in the Neighborhood

- Not far from the industries along the shoreline, small businesses like Tomkinson's Livery & Stable, a Chinese Laundry, a pork packing factory and a candy factory were interspersed among crowded working-class residences.
- Archaeological finds lack significance unless they can be connected to the men and women that created them. Census research allows archaeologists to better understand neighborhoods.

1880 Census

Minna



Natoma

Source: 1887 Sanborn Map



Transbay Transit Center

Previous Disturbance

After determining the history of land use within a parcel, archaeologists must determine the likelihood that deposits have survived.

- Testing is typically not conducted in areas that have been disturbed previously.

Examples:

- 1906 Earthquake and Fire rubble
- Post-quake Rebuilding
- Transbay Terminal and Ramp Construction

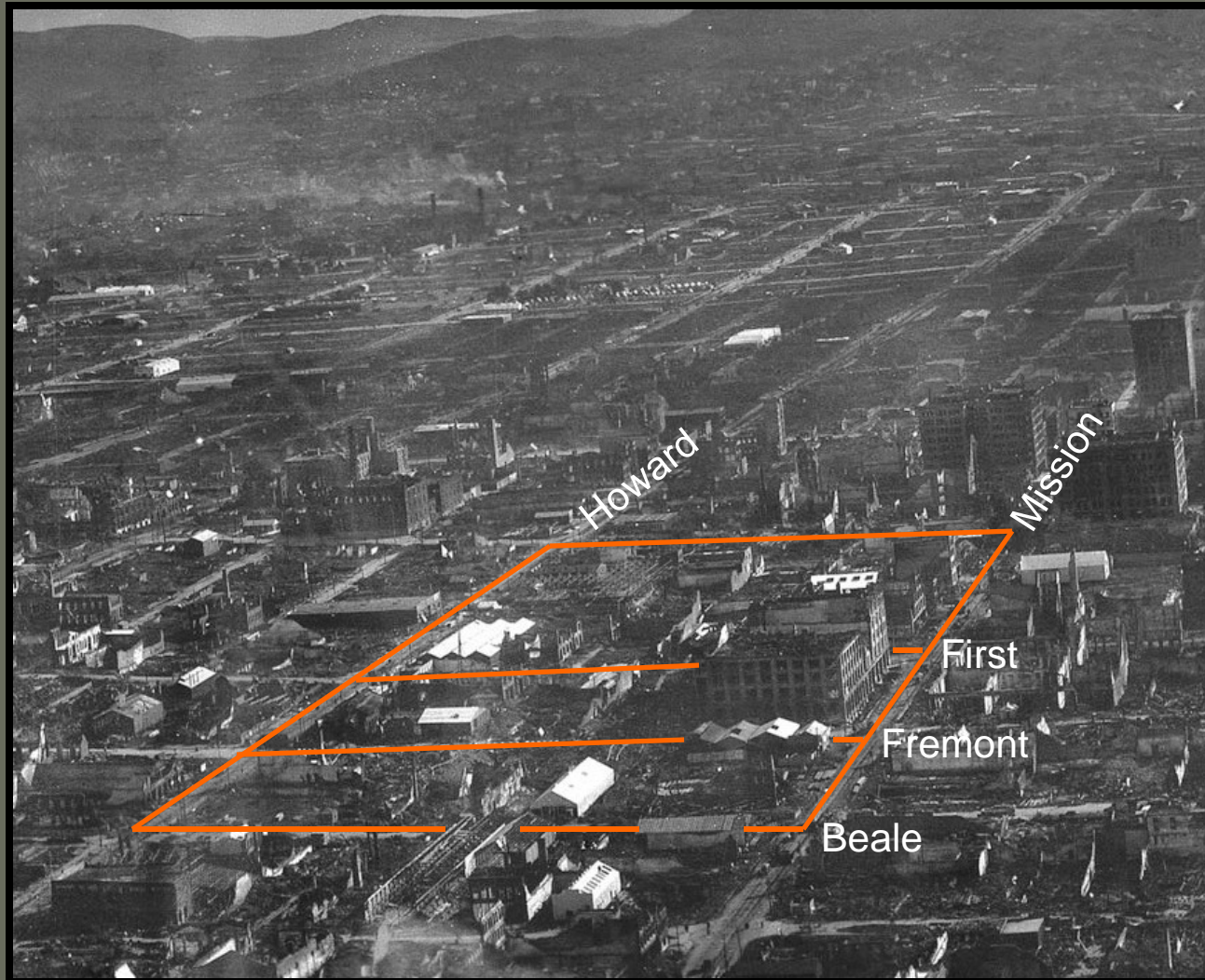




Transbay Transit Center

1906 Earthquake & Fire

The earthquake and fire of April 1906 decimated much of the South of Market neighborhood. A layer of earthquake debris is buried throughout much of the area.





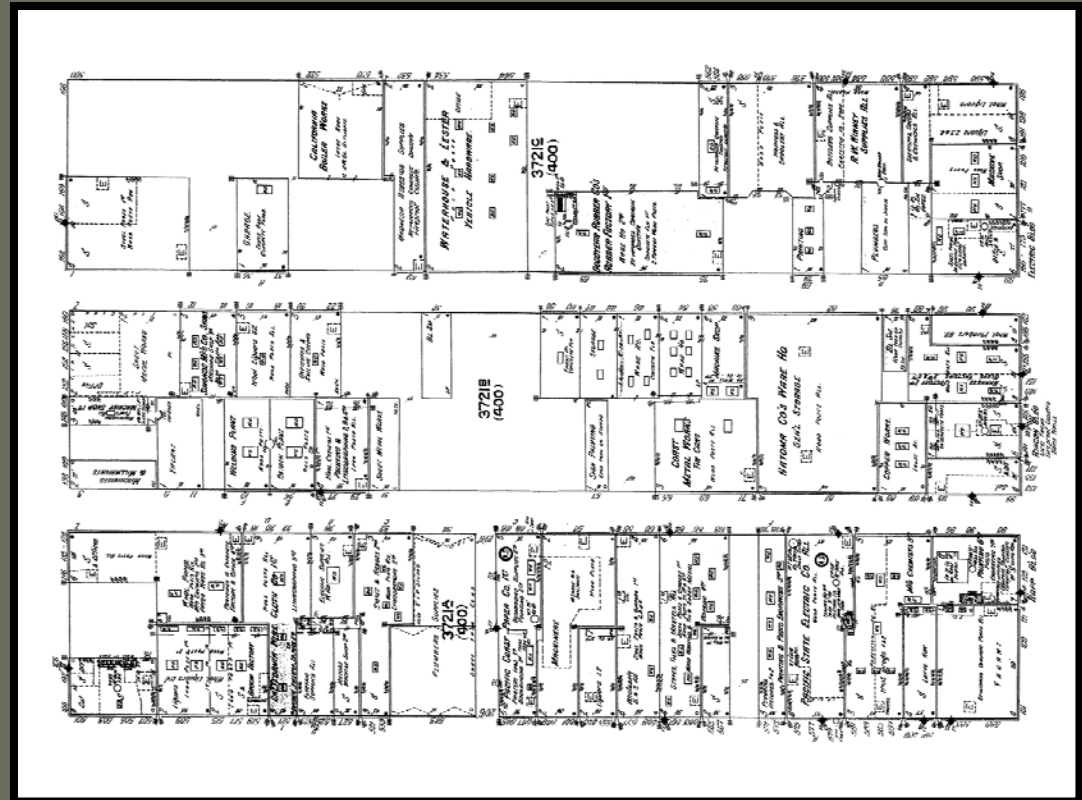
Transbay Transit Center

Post-quake Rebuilding

Mission

- The residents in the South of Market did not return to their old neighborhoods.
- Many lots remained vacant for several years.
- City services, like sewers, were often utilized when lots were rebuilt, lessening the likelihood that archaeological features were created in the 20th century.
- Light industry, warehouses, and later parking lots and transportation infrastructure dominated the neighborhood.

Second



First

Howard

Source: 1913 Sanborn Map

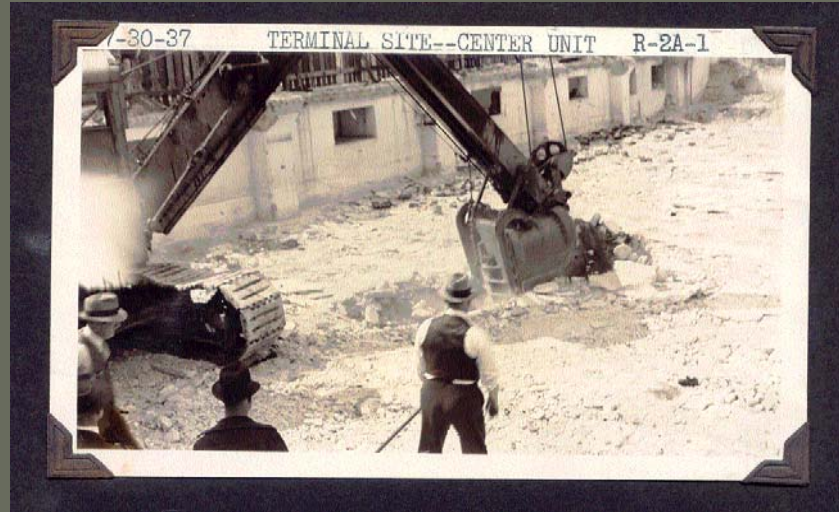


Transbay Transit Center

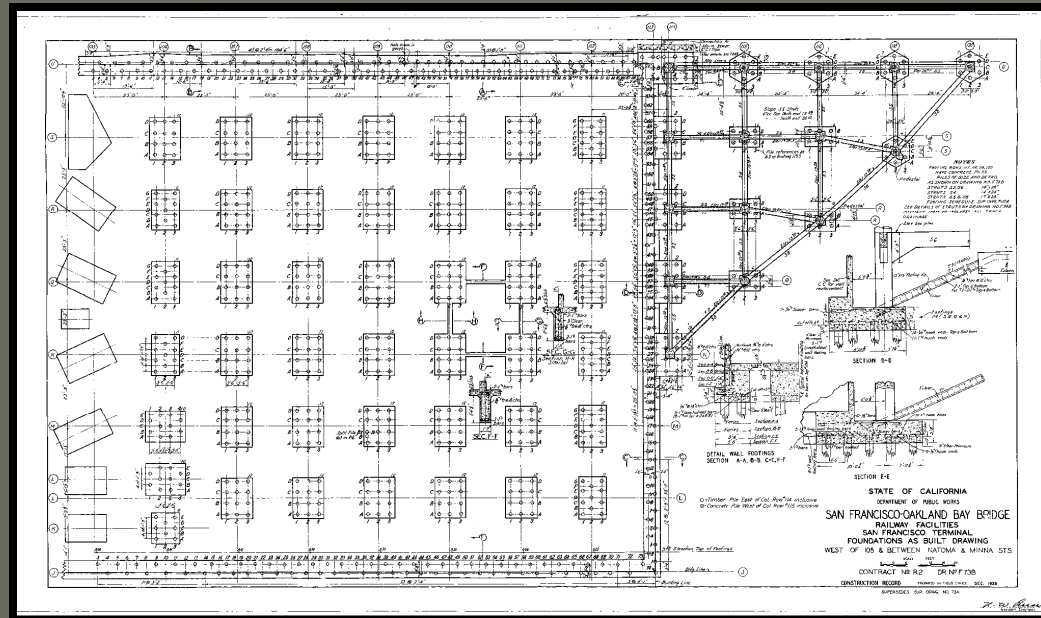
Terminal Construction

- Construction of the original Transbay Terminal would have disturbed any archaeological features present in much of the building's footprint .
- Construction As-Builts helped guide the drafting of a testing plan by providing specific locations of previous disturbance.

Construction As-Built
Plan from the
Transbay Terminal in
1938



Excavation for
construction of
the Transbay
Terminal in
1937





Transbay Transit Center

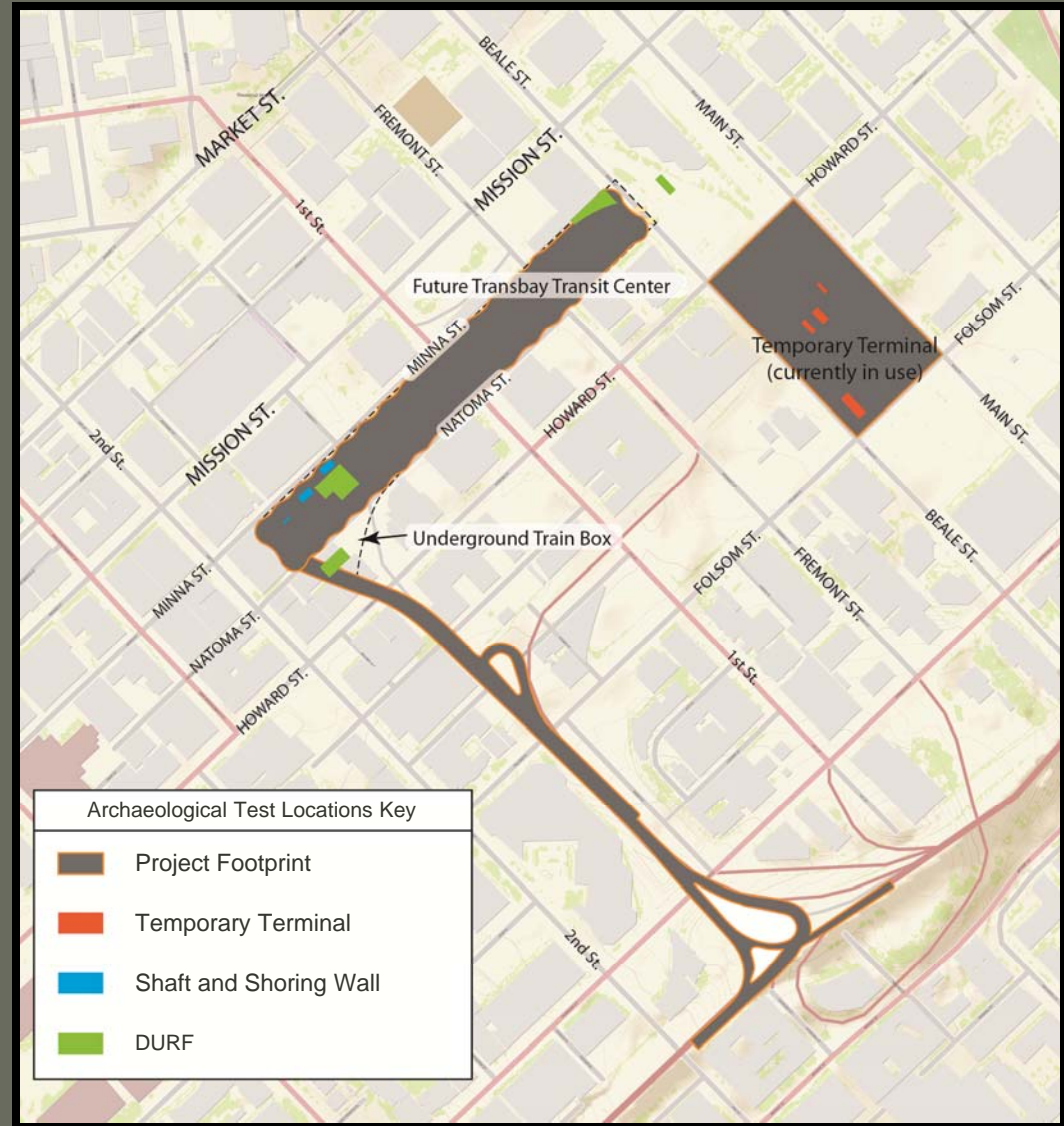
Implementing the Testing Plan



Transbay Transit Center

Areas of Testing

- Three phases of the project have been tested for archaeological resources in advance of construction: the Temporary Terminal; Shaft and Shoring Wall; and the Demolition, Utility Relocation, and new Transit Center Foundation Excavation (DURF).
- Upcoming phases for testing include the Bus Storage Facility and Bus Ramps (not depicted on map)





Transbay Transit Center

Methods of Testing

- Trenching and areal excavation are used to locate historic deposits.
- Coring is utilized when testing for deeply buried prehistoric deposits.
- Archaeologists are present to identify cultural material discovered during these activities.





Transbay Transit Center

Data Recovery

- Significant archaeological features found during the testing phase are carefully excavated by hand, then photographed and drawn to scale.
- With the aid of historic maps and modern GIS technology, it is often possible to link these features to specific households and businesses.





Transbay Transit Center

What We've Found



Transbay Transit Center

Archaeological Features

Privy in profile before it is excavated by archaeologists, north side of Natoma Street



Remains of a wood barrel after the contents have been excavated, north side of Natoma Street



Privy in plan view as it's being excavated, south side of Natoma Street

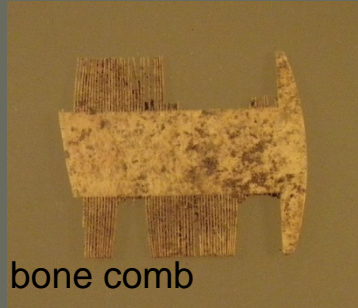


Remains of small, mid 19th century structure, north side of Natoma Street



Transbay Transit Center

The Chinese Laundry



bone comb



ginger jar



soy sauce jar



rice wine jar



rice/soup bowl



opium pipe bowl



Transbay Transit Center

Personal Items

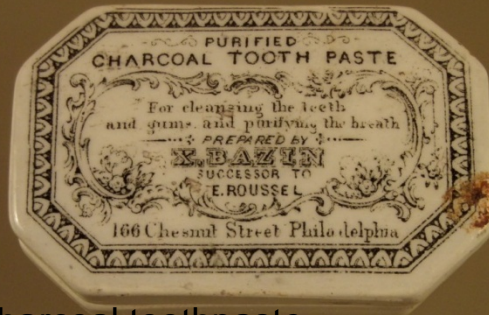
Schenk's Pulmonic Syrup



B.B. Thayer, SF



perfume



charcoal toothpaste



chamber pot



bone toothbrush



comb



Transbay Transit Center

Home Life

doll



figurine



woman's belt buckle



pipe



dog collar



marbles





Transbay Transit Center

At Work



crucible



crucible



casting pattern



pulley wheel



chisel



Transbay Transit Center

Public Outreach

- The recently installed exhibition at 201 Mission Street uses artifacts and historic documents to recall the lives of the people who lived and worked in the project area.
- This exhibit gives the public a rare glimpse into the history of the neighborhood.

