



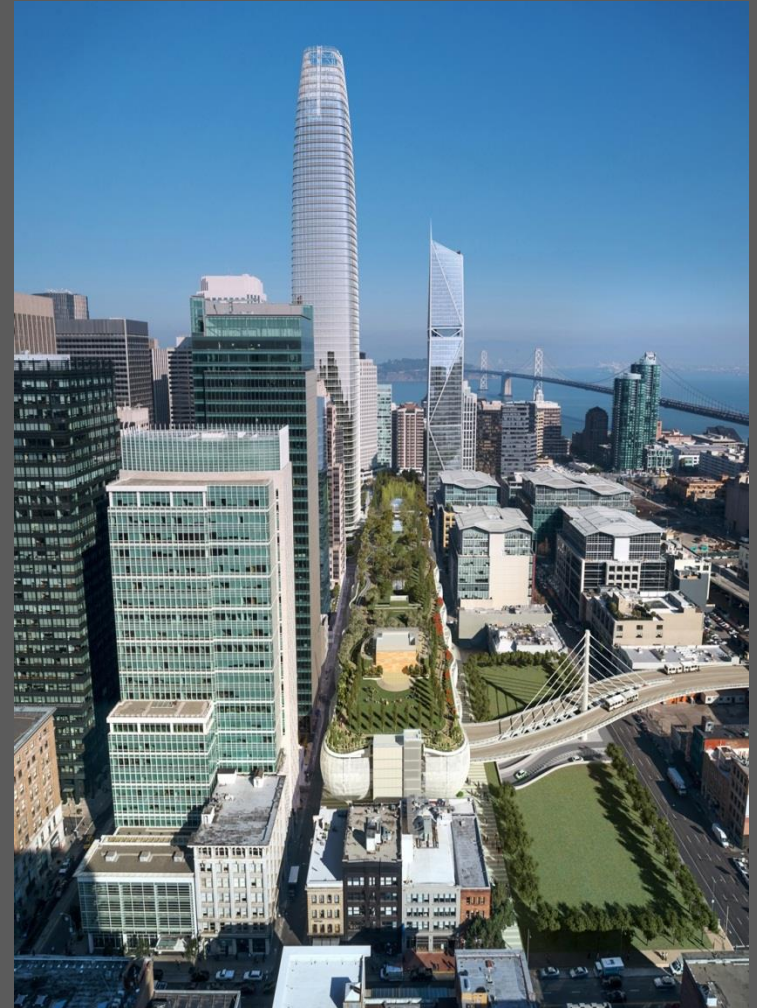
Transbay Transit Center

TRANSBAY TRANSIT CENTER

TG16.0 Interiors/Finish

Pre-Bid Question and Answer Session
Webcor/Obayashi Joint Venture Office
175 Beale St.
San Francisco, CA
2:00PM March 5, 2015

Please sign in!





Transbay Transit Center

Transbay Transit Center

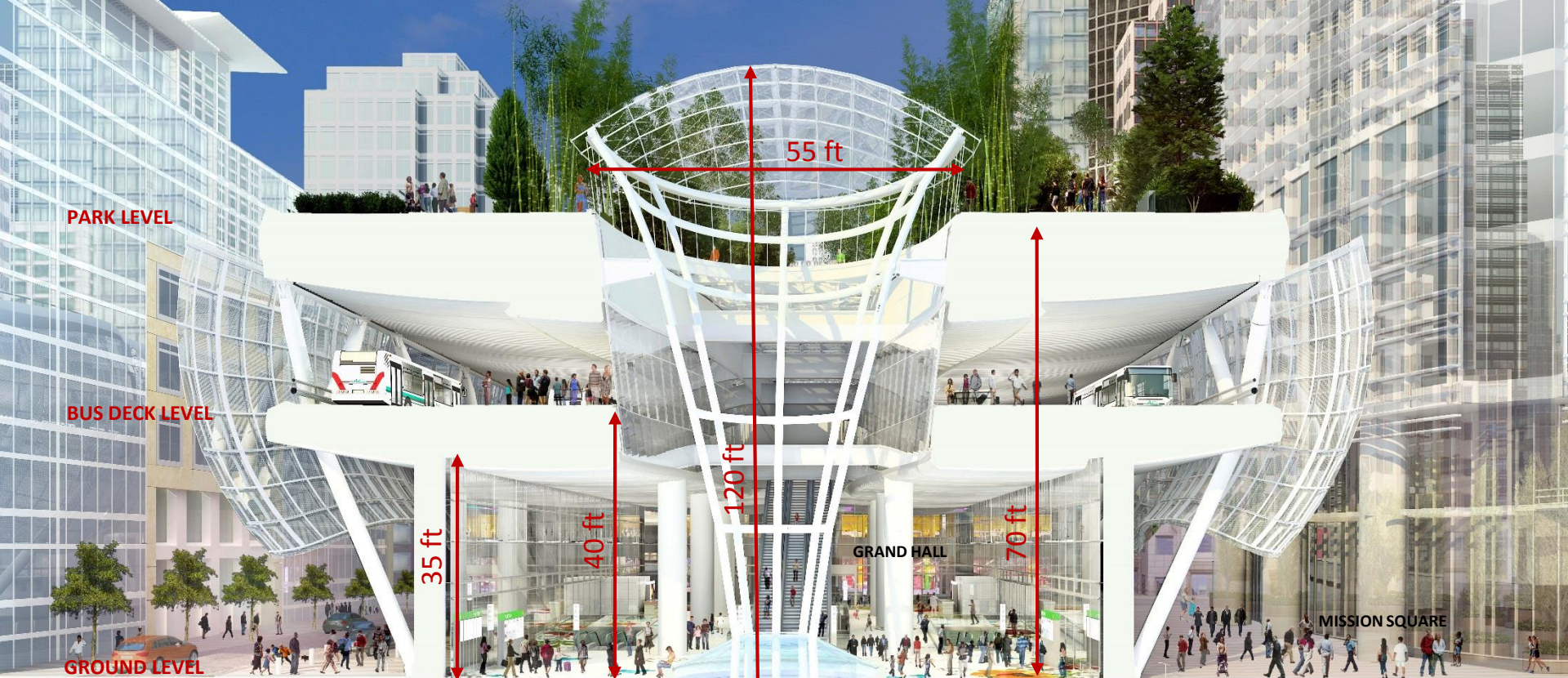
TG16.0 Interiors/Finishes

Project General Information

- Client: Transbay Joint Powers Authority (TJPA)
- Construction Manager/General Contractor: Webcor/Obayashi Joint Venture
- Architect: Pelli Clarke Pelli Architects / Adamson Associates







BUILDING SECTION



NATOMA STREET VIEW – METAL AWNING





BEALE STREET VIEW



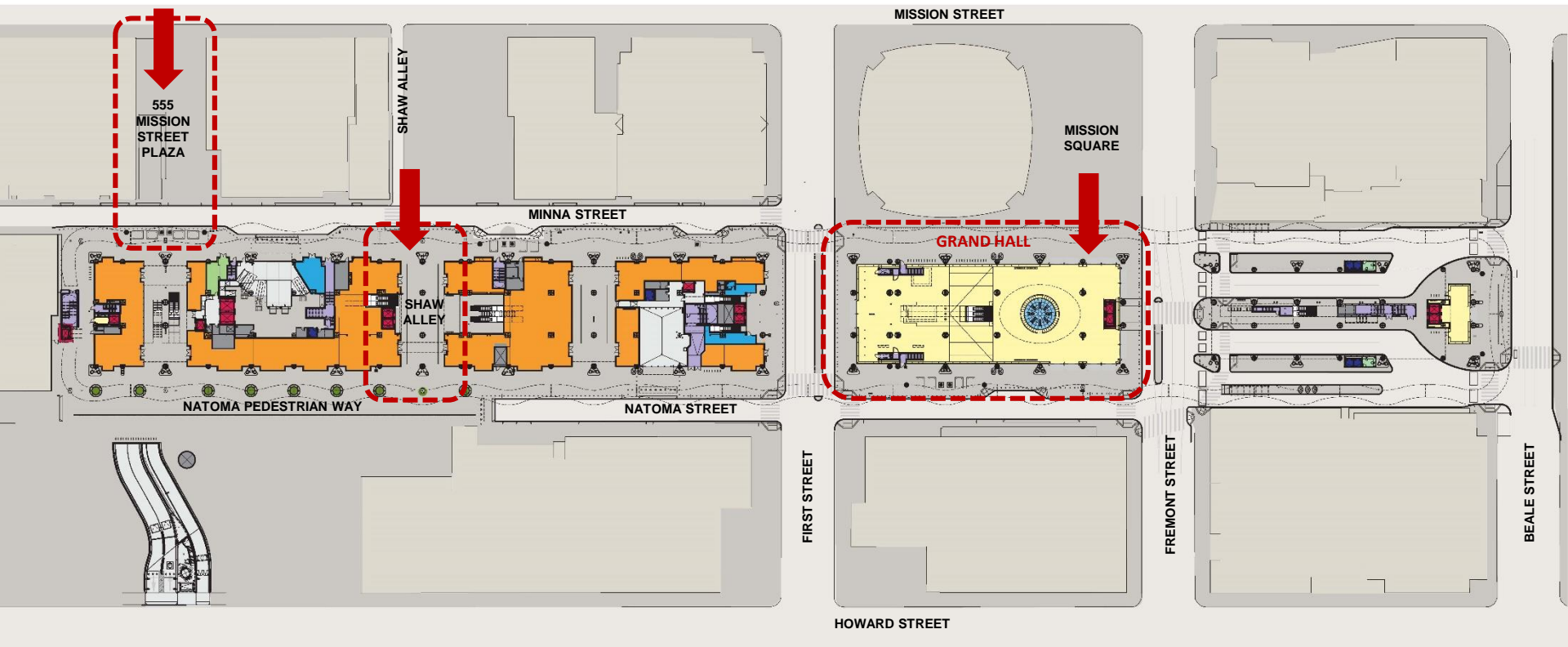
Transbay Transit Center



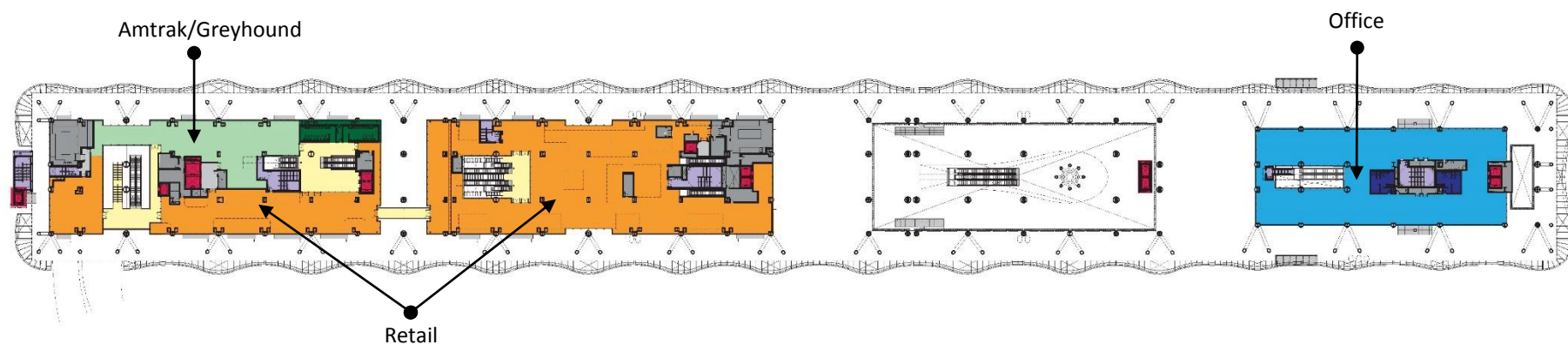
FIRST STREET VIEW



Transbay Transit Center

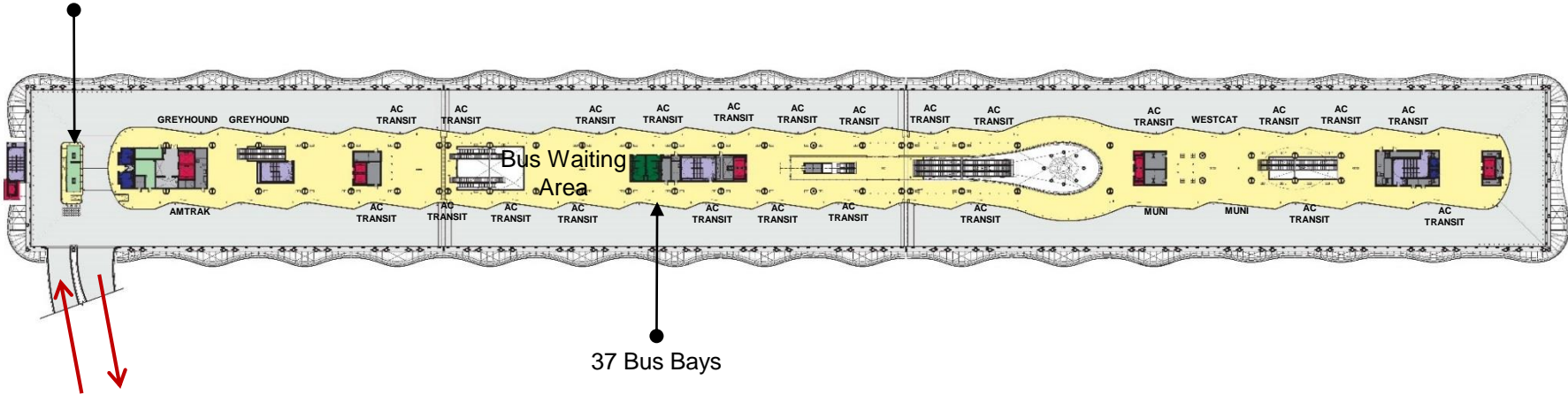


GROUND LEVEL PLAN



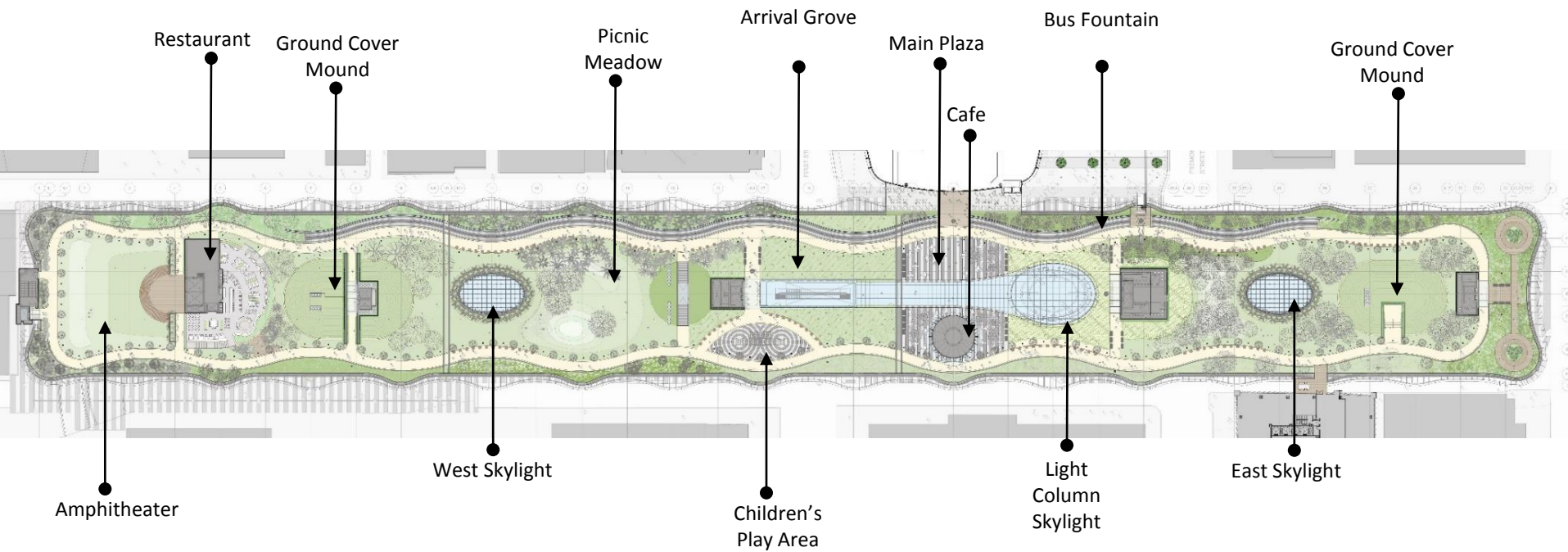
Second Level

Bus Deck
Superintendent
Station



37 Bus Bays

Bus Ramp





GRAND HALL



Transbay Transit Center



14
B
Next Bus
3:07pm

BUS DECK



Transbay Transit Center







Transbay Transit Center

Transbay Transit Center

TG16.0 Interiors/Finishes

General Scope Summary Review

- Preparation of substrate
- Engineering
- Work within Hoistways (scaffold and operator)
- All scanning required for this scope of work.
- Patching for areas around all elevator doors.
- Patching of Fireproofing
- Third Party Testing
- Work underway



Transbay Transit Center

Transbay Transit Center

TG16.0 Interiors/Finishes

Masonry Scope Summary Review

- All CMU
- All drilling and epoxying of rebar/anchors.
- All miscellaneous metal bracing at the head of wall.
- Exclusions: Roof Top Park Level CMU support walls (exclusion does not apply to Roof Top Park Restaurant).



TG16.0 Interiors/Finishes



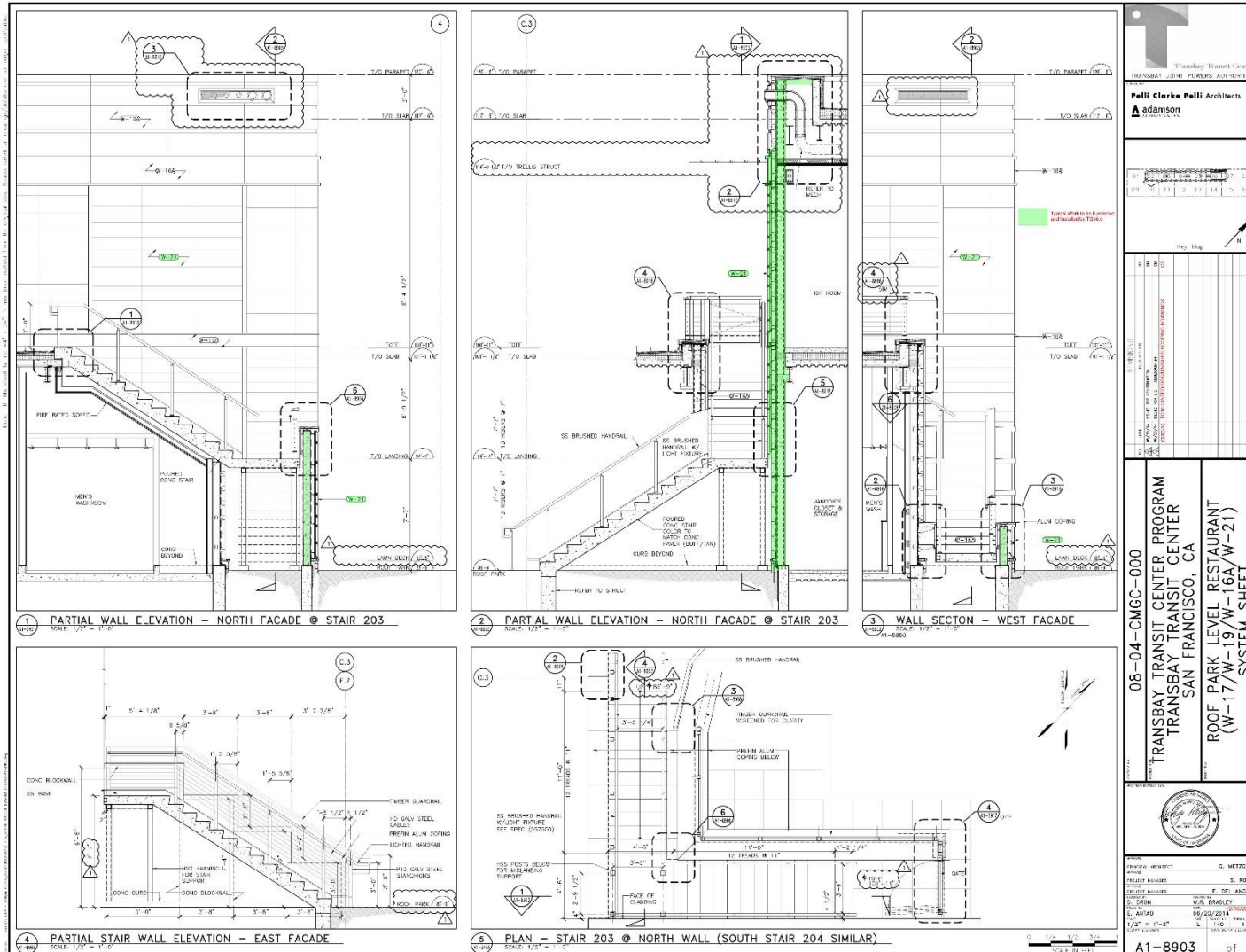
ISSUED FOR CONSTRUCTION



Transbay Transit Center

Transbay Transit Center

TG16.0 Interiors/Finishes





Transbay Transit Center

Transbay Transit Center

TG16.0 Interiors/Finishes

Walls & Ceilings Scope Summary Review

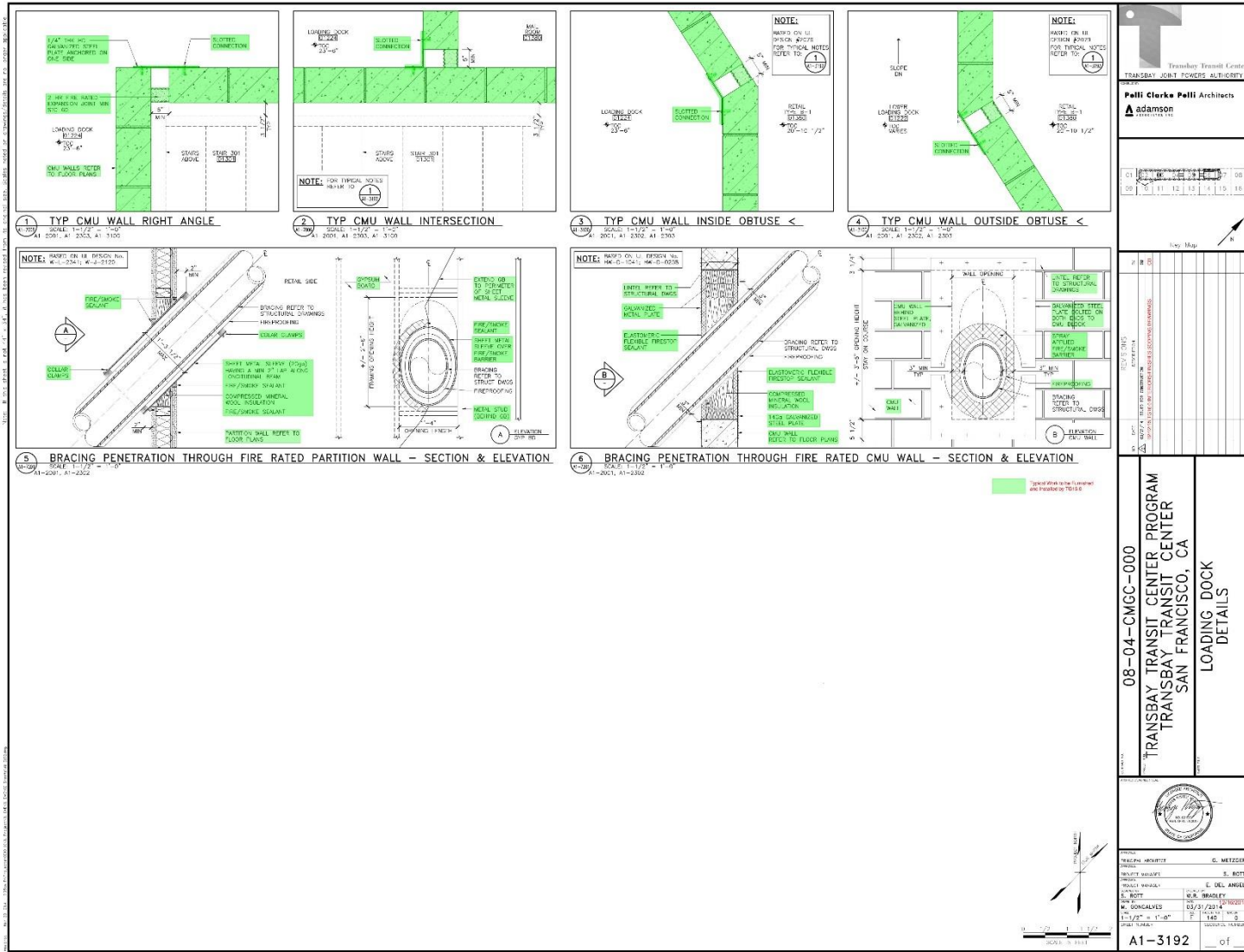
- All ballistic resistant panels.
- All thermal and safing building insulation.
- All penetration fire stopping.
- Pay attention to finishing requirements at elevator shaft interiors.
- Pay attention to seismic/expansion joints located within this scope of work.
- Pay attention to areas noted to receive flooring, base, and/or finish ceilings but are not shown as being painted.



Transbay Transit Center

Transbay Transit Center

TG16.0 Interiors/Finishes





TG16.0 Interiors/Finishes

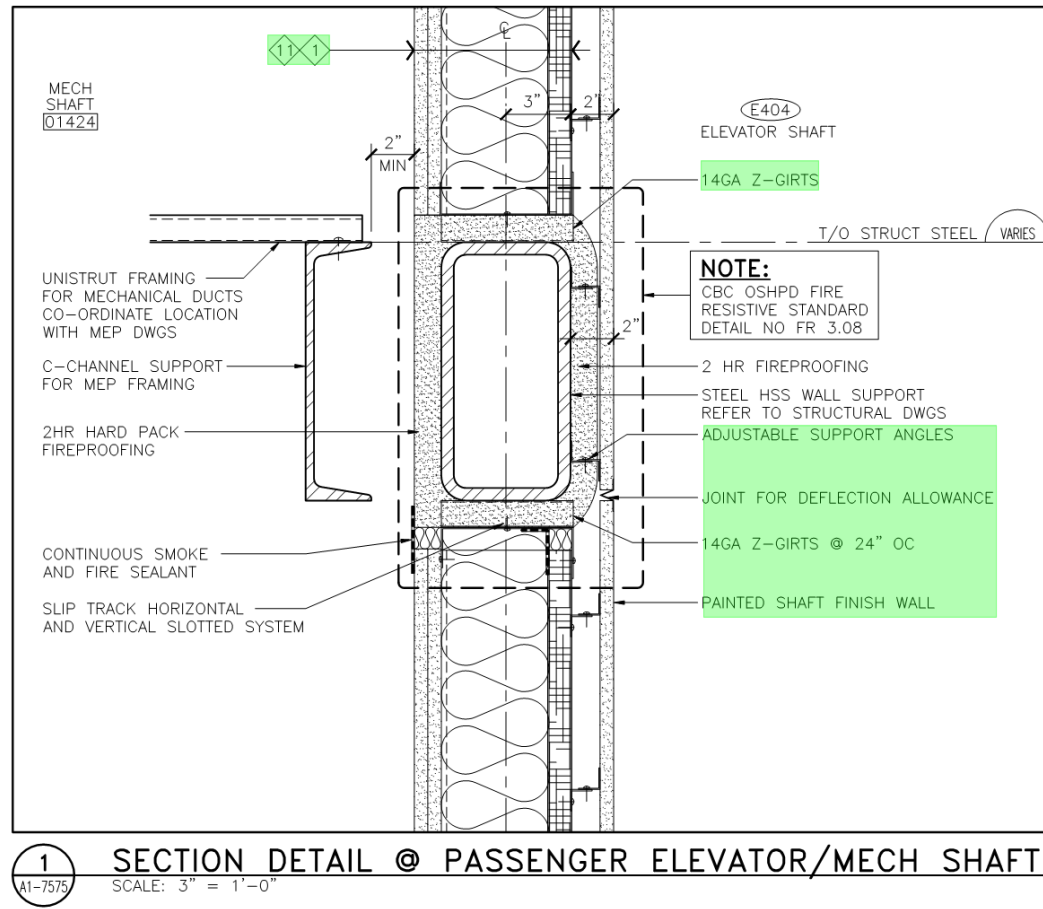




Transbay Transit Center

Transbay Transit Center

TG16.0 Interiors/Finishes



1
A1-7575

SECTION DETAIL @ PASSENGER ELEVATOR/MECH SHAFT

SCALE: 3" = 1'-0"



Transbay Transit Center

Transbay Transit Center

TG16.0 Interiors/Finishes

ROOM NUMBER	ROOM NAME	FLOOR		BASE	WALLS		CEILING		COMMENTS
		MATERIAL	FINISH		MATERIAL	FINISH	MATERIAL	FINISH	
B2403	STAIR 403	CONC	FC-3	**	GB	-	EXP STRUCT	-	REFER TO DRAWING A1-7013 FOR PLANS. METAL CHECKER PLATE LANDINGS, TREADS AND RISERS, METAL RAILINGS & STRINGERS: PAINTED (PT-2). **4'-0" HIGH ALUMINUM CHECKER PLATE BASE ON GB PARTITIONS (CLEAR ANODIZED). REFER TO DRAWING A1-7501 TO 7505 FOR TYPICAL DETAILS. REFER TO SPECIFICATION SECTION 10 14 43 FOR LOCATIONS OF PHOTO-LUMINESCENT STRIPS.
B2420	MECHANICAL PUMP ROOM	CONC	FC-1	FC-1*	CMU	-	EXP STRUCT	-	*TAKE FLOOR FINISH UP THE WALLS TO T/O CURB OR FIRST MASONRY COURSE.
B2421	IDE ROOM	CONC	FC-3	BB	CMU	-	EXP STRUCT	-	60/4" THICK 2" SLIGHTLY PRESURIZED TREATED FIRE RETARDANT PLUMWOOD BACKING PANELS CALL



Transbay Transit Center

Transbay Transit Center

TG16.0 Interiors/Finishes

Cladding Scope Summary Review

- All clay panel cladding (W-21) terra cotta, and all associated assemblies
- All cement plaster, including associated support, accessories, flashing, sealant, and all other elements integral to the system
- Pay attention to sealant within design-build systems
- Pay attention to seismic/expansion joints
- Coordinate with adjacent trade subcontractors (TG13.2 Roofing/Waterproofing, TG08.4 Metal Panels (W-5, W-7, W- 9, W-16A/B/C, W-17, W-19), etc.) to assure a fully integrated, water tight system.



TG16.0 Interiors/Finishes





TG16.0 Interiors/Finishes



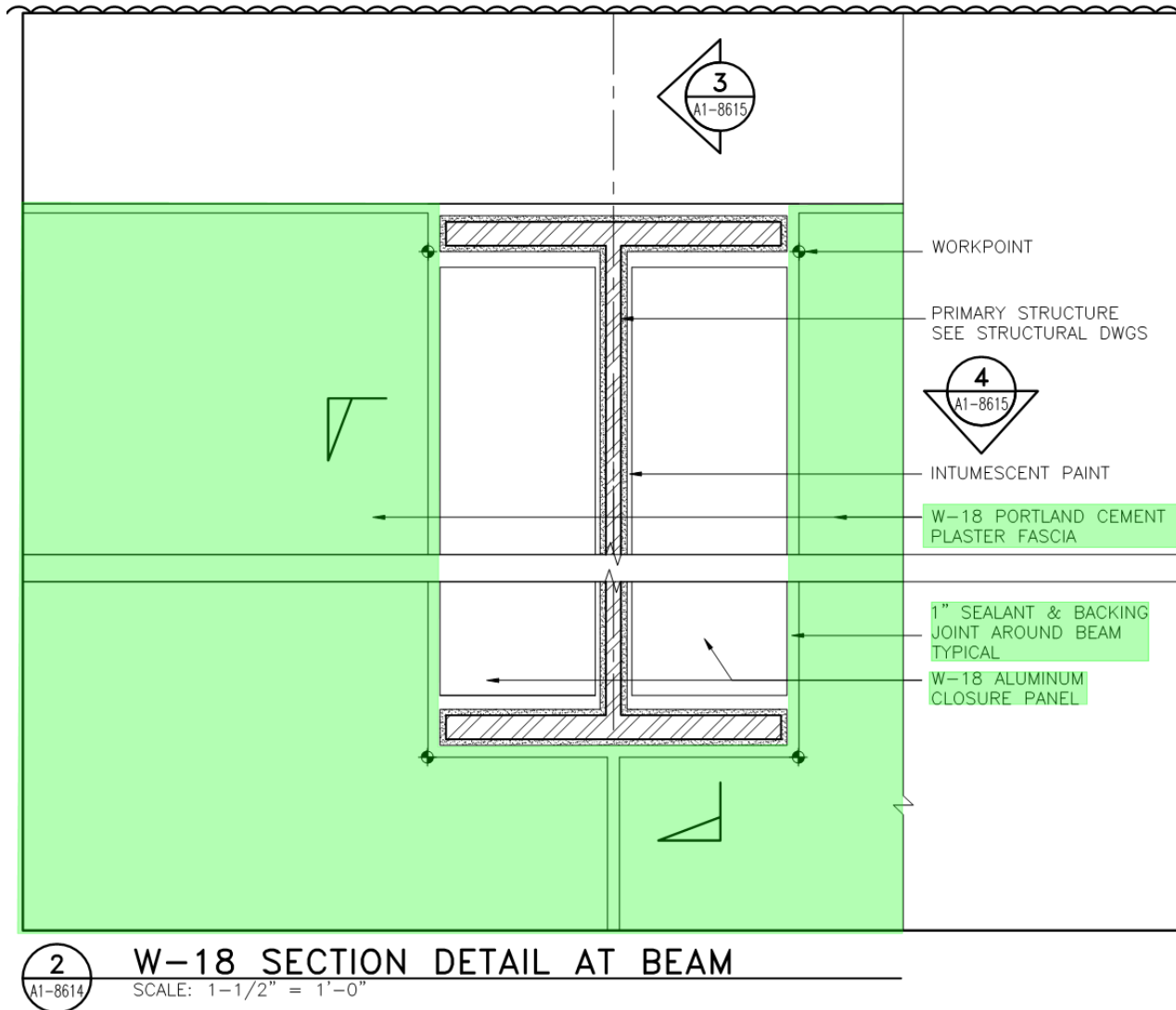
ISSUED FOR CONSTRUCTION



Transbay Transit Center

Transbay Transit Center

TG16.0 Interiors/Finishes





Transbay Transit Center

Transbay Transit Center

TG16.0 Interiors/Finishes

Doors, Frames, and Hardware Scope Summary Review

- Ballistic doors and frames
- Blast resistant hollow metal doors and frames
- Coordination with TG10.4 Electrical Trade Subcontractor
- Commissioning
- Verification of hardware for design/build doors

- Exclusions – Doors and hardware for other trade packages' curtain wall systems



Transbay Transit Center

Transbay Transit Center

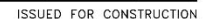
TG16.0 Interiors/Finishes

Coatings Scope Summary Review

- Acclimatization (tenting, dehumidification, etc.)
- One round of patching and paint touch-ups
- All patching of ports in cast nodes/basket columns
- Painting of basket column vents
- Pay attention to finish requirements at elevator shaft interiors
- Ground Level and Bus Deck Level basket column cast nodes, associated cylindrical AECS elements/AECS closure elements, and adjacent AECS materials



TG16.0 Interiors/Finishes





Transbay Transit Center

Transbay Transit Center

TG16.0 Interiors/Finishes

1" Ø GROUT HOLE
WITHOUT TAPER AND
FILL HOLE WITH
EPOXY RESIN AND DRILL
1/2" DIA HOLE

HOLE TO BE
PERPENDICULAR
TO PIPE WALL

CL
OF HOLE

1" DIA

5/8" DIA

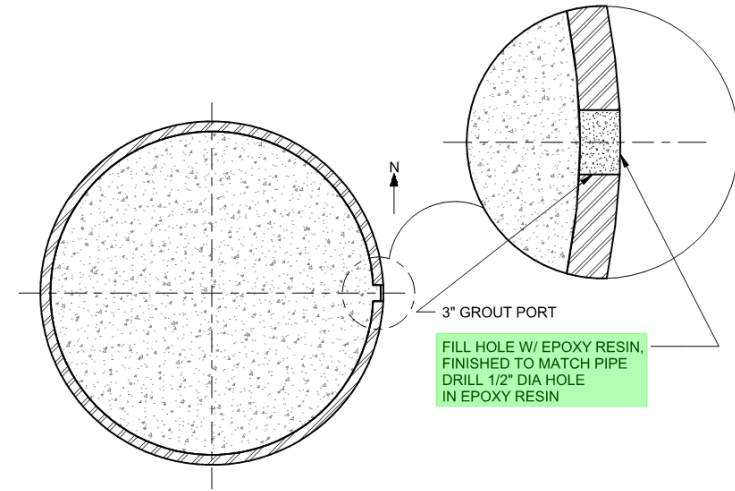
TAPER 1:1

FINISH CONCRETE FILL SURFACE
TO MATCH PIPE INSIDE SURFACE
(NO PAINT ON CONCRETE SURFACE)

N

HOLE EA
SIDE

(A) 5/8" VENT HOLE OR 1" GROUT HOLE
3/4" = 1'-0"



FILL HOLE W/ EPOXY RESIN,
FINISHED TO MATCH PIPE
DRILL 1/2" DIA HOLE
IN EPOXY RESIN

(B) 3" GROUT PORT
3/4" = 1'-0"

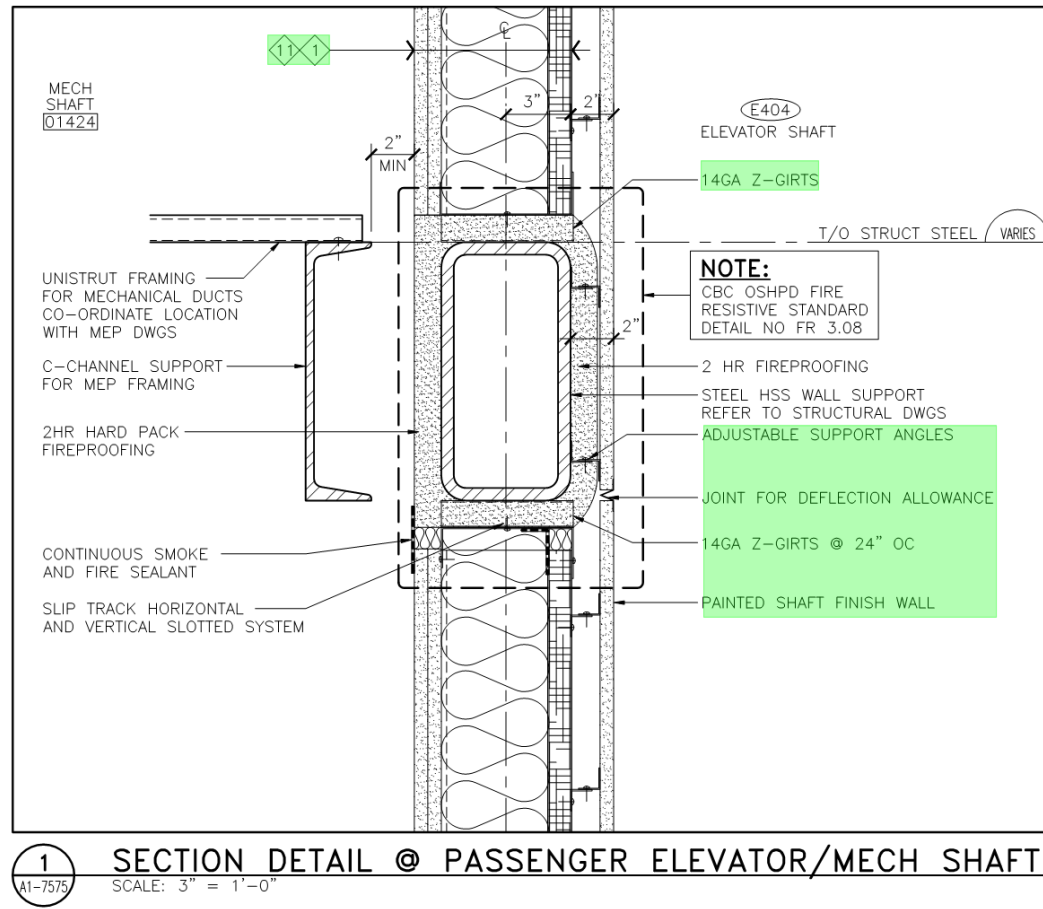
LL PIPES.



Transbay Transit Center

Transbay Transit Center

TG16.0 Interiors/Finishes



1
A1-7575

SECTION DETAIL @ PASSENGER ELEVATOR/MECH SHAFT

SCALE: 3" = 1'-0"



Transbay Transit Center

Transbay Transit Center

TG16.0 Interiors/Finishes

Ceramic Tile Scope Summary Review

- All WPM-12 waterproofing
- Pay special attention to areas noted as receiving flooring, base, and/or finish ceilings, but are not shown as being painted.
- Preparation of substrate



Transbay Transit Center

Transbay Transit Center

TG16.0 Interiors/Finishes

Flooring Scope Summary Review

- All vapor barrier for flooring
- Pay special attention to areas noted as receiving flooring, base, and/or finish ceilings, but are not shown as being painted.
- Acclimatization
- Preparation of substrate



Transbay Transit Center

Transbay Transit Center

TG16.0 Interiors/Finishes

Architectural Woodwork Scope Summary Review

- All interior woodwork
- All engineered stone countertops and backsplashes
- Acclimatization
- Exclusion – Steel supports for counter and vanity tops



Transbay Transit Center

Transbay Transit Center

TG16.0 Interiors/Finishes

Prefabricated Buildings Scope Summary Review

- Furnish and install all prefabricated guard booths including all MEPS, embeds, testing, and coordination required for a complete system
- No later than 30 days after issuance of the TG16.0 Interiors/Finishes Notice to Proceed, furnish layout/canning drawings for all prefabricated guard booths for coordination with the work of other trades.



Transbay Transit Center

Transbay Transit Center

TG16.0 Interiors/Finishes

Specialties Scope Summary Review

*Exclusions:

- Exclusion - Bird Control Devices/ Bird Deterrent Systems directly affixed to "W" systems
- Exclusion - Pavement markings and striping at Ground Level and the Bus Ramp



Transbay Transit Center

Transbay Transit Center

TG16.0 Interiors/Finishes

Work Platform Scope Summary Review

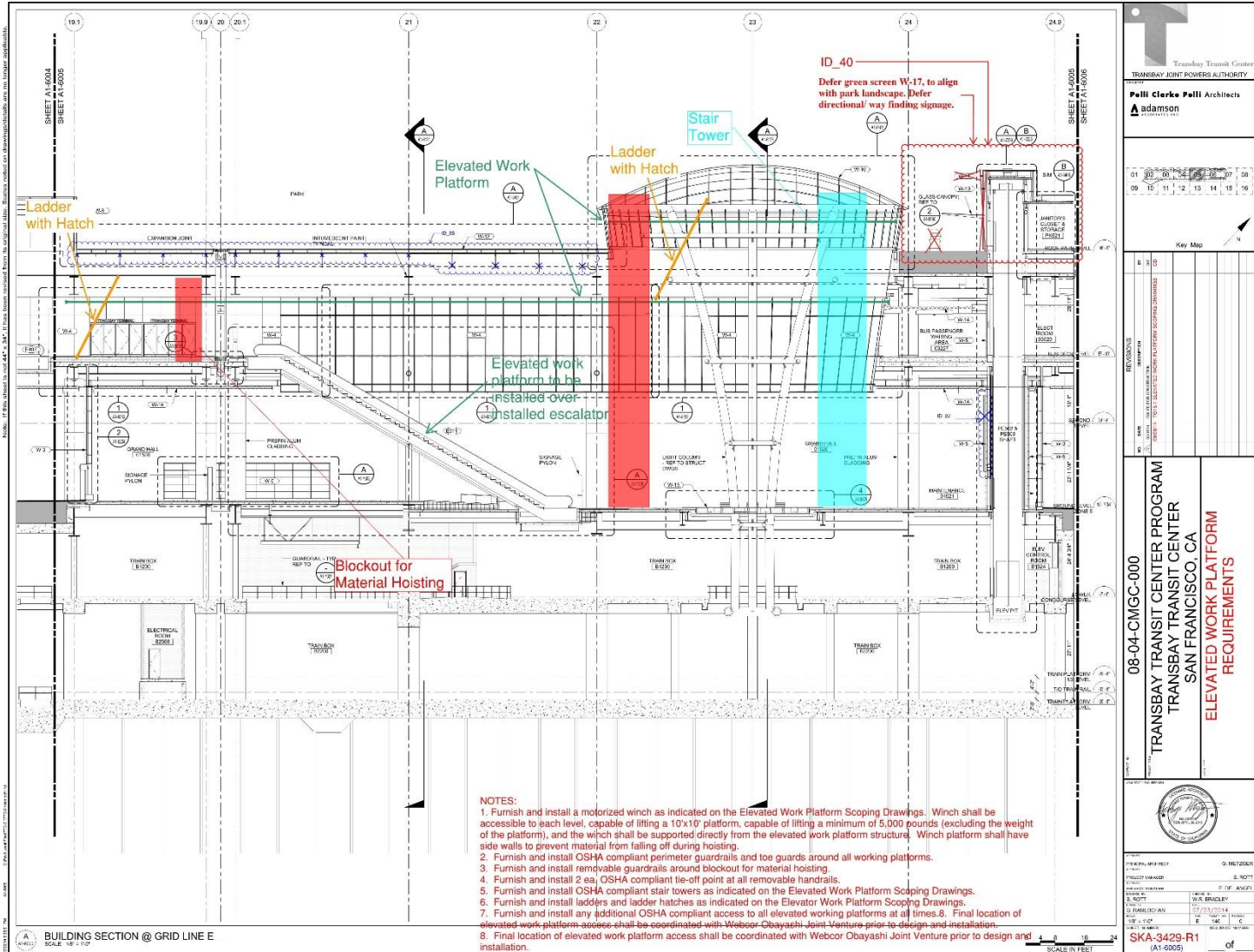
- Design (including wet stamped engineering calculations), furnish, install, maintain and remove elevated work platforms and motorized winches as described within the supplementary documents for use by all trade subcontractors requiring access.



Transbay Transit Center

Transbay Transit Center

TG16.0 Interiors/Finishes





Transbay Transit Center

Transbay Transit Center

TG16.0 Interiors/Finishes

Final Cleaning Scope Summary Review

- Final cleaning shall include 2 full cleanings as directed by Webcor/Obayashi Joint Venture.
- The first round of cleaning shall assure the entire building is cleaned to a level acceptable for final sign-off by TJPA.
- After the punch list work has been completed, the second round of cleaning shall assure the entire building is cleaned to a level acceptable for final sign-off by TJPA.
- Assume that the work will require multiple mobilizations, multiple crews, and will be performed in a discontinuous flow



Transbay Transit Center

Transbay Transit Center

TG16.0 Interiors/Finishes

Questions?



Transbay Transit Center

Transbay Transit Center

TG16.0 Interiors/Finishes

IFB Package Timeline

Bid Package Issued:	February 12, 2015
Pre-Bid Conference:	March 5, 2015 (2:00 p.m.)
Qualifications Due (for non-prequalified):	March 5, 2015 (2:00 p.m.)
Notification of Qualification (for non-prequalified):	March 12, 2015
Questions/Clarifications (QBD) Due:	March 26, 2015 (2:00 p.m.)
Pre-bid Request for Substitution Due:	March 26, 2015 (2:00 p.m.)
Value Engineering (VE) Proposals Due:	April 2, 2015 (2:00 p.m.)
VE Proposals Review:	April 2 - 15, 2015
Bid Package Due:	April 16, 2015 (2:00 p.m.)
Public Bid Opening:	April 16, 2015 (2:00 p.m.)
Protest Period Ends:	April 23, 2015 (5:00 p.m.)
Notification of Intention to Award Contract:	May 2015
TJPA Board Vote to Approve the Contract Award:	June 11, 2015



Transbay Transit Center

Transbay Transit Center

TG16.0 Interiors/Finishes

Obtaining Contract Documents

- TJPA Website
 - List of all Exhibits
 - Non Disclosure Agreement (NDA)
- Plan Room (ARC)
 - Non-SSI
 - SSI - Hard Copy Only
- Box.com
 - SSI and Certain SSI (Managed by TJPA)
 - Main Package ASIs (Managed by TJPA)
 - Supplemental Documents (Managed by Webcor/Obayashi Joint Venture)



Transbay Transit Center

Transbay Transit Center

TG16.0 Interiors/Finishes

Request for Information P1-0001 to P1-0686

Pay close attention to the following RFIs:

RFI No.	Subject
P1-0099.2	Level 1 Paint Finish Requirements
P1-0150.1	Penetration Firestopping Testing Clarification
P1-0169.1	Clarification for the Preparation of Cast Nodes
P1-0388	Metal Framing Design-Build Compliance with Specification Section 08 05 13
P1-0400	Portable Lighting Requirement per Specification Section 09 21 16 1.6 E
P1-0419	Application of Specification Section 01 80 50
P1-0426	Confirm the Use of Scanning and Other Means to Locate Reinforcing Bars
P1-0443	Verification of Performance Requirements by Door Designer/Subcontractor
P1-0639	Elevator Shaft Painting Requirements



Transbay Transit Center

Transbay Transit Center

TG16.0 Interiors/Finishes

Request for Information

T-0001 to T-02358

Pay close attention to the following RFIs:

RFI No.	Subject
T-2040	PFB - Prefabricated Guard Booth Electrical Clarification per Sheet Notes
T-2042	PFB - Make-Up Air Requirements for Restrooms 01640, 01641, 01620, and 01621 per Sheet M1-2306
T-2043	PFB - Electrical Requirements for Booth Type 1 and 3
T-2044	PFB - Telecommunication Requirements per Specification Section 13 34 24
T-2045	PFB - Industrial Aliphatic Urethane Coating Requirement per Specification Section 13 34 24
T-2046	FCL - Additional Final Cleaning Requirements per Specification Section 01 17 00
T-2047	PFB - Linoleum Sole Sourcing and Specifications
T-2048	PFB - Specifications for Aluminum Ceiling Tile
T-2049	PFB - Single Booth Panel Board Requirements per Specification Section 13 34 24
T-2049.1	INT - Electrical Panel Requirements Within Prefabricated Units
T-2069	INT - Specifications and Details for Bus Deck Level Benches
T-2115	INT - Ramps and Railings at Prefabricated Buildings
T-2116	INT - Painting of Walls and Ceilings
T-2118	INT - Acoustics Report Reference



Transbay Transit Center

Transbay Transit Center

TG16.0 Interiors/Finishes

Bid Form

Trade Package TG16.0
Interiors/Finishes

TRANSBAY TRANSIT CENTER PROJECT
San Francisco, CA

SCHEDULE OF BID PRICES **TG16.0 – Interiors/Finishes**

Name of Bidder: _____

The undersigned, having examined all referenced documents and the Drawings, understanding the terms and conditions of the Contract Documents and the local conditions affecting the performance and costs of the Work, and having fully inspected the Site in all its particulars, hereby proposes and agrees to fully perform the Work as indicated on the Drawings and in accordance with the requirements of the Contract Documents within the time stated therein, and for the following price(s):

No.	Item Description	Unit of Measure	Bid Price
<u>Below Ground Level</u>			
1	Interiors/Finishes	LS	
<u>Ground Level and Above</u>			
2	Interiors/Finishes	LS	
TOTAL BASE BID PRICE (Sum of Items 1+2)			
PERFORMANCE AND PAYMENT BOND RATE (This is for informational purposes only)			%
POTENTIAL PAYMENT AND PERFORMANCE BOND COST (Total Base Bid Price x Bond Rate; this is for informational purposes only)			\$

Bidder shall furnish a price for all Bid items, set forth in the Schedule of Bid Prices. Failure to furnish a price for all items set forth in the Schedule of Bid Prices shall render the Bid non-responsive and will be cause for its rejection. If an item is left blank, the price shall be assumed to be zero (\$0.00).

In case of discrepancy between the sum of Bid item amounts and the Total Base Bid Price, the sum of said amounts shall prevail. In case of discrepancy between words and figures, the words shall prevail.

Accepted VE Proposals, if any, shall be deducted from the Total Base Bid Price to determine the Bidder's Total Bid Price.

Bidder acknowledges and agrees that this Bid, if not withdrawn prior to the scheduled time for receipt of Bids, shall not be withdrawn for a period of 90 days thereafter.

Total Bid Price:
\$ _____



Transbay Transit Center

Transbay Transit Center

TG16.0 Interiors/Finishes

QBD & Substitution Process

B. Questions On Bid Documents (QBD)

Project: Transbay Transit Center

Contract No.: _____

To: Webcor/Obayashi Joint Venture
(See Exhibit A For Contact Information)

From: _____ Date: _____

Firm: _____ Telephone: _____

Specification Section: _____ Paragraph(s): _____

Drawing Sheet: _____ Detail(s): _____

Question: _____

☐ Mark this circle if the QBD can be answered by Bidder's review of the documents. Reply with location(s) where the information can be obtained.

Reply: _____

By: _____ Firm: _____ Date: _____

The reply is an answer to a Bidder's question. The reply does not change the Bid Documents unless the information contained therein is issued in an Addendum. At the sole discretion of Webcor/Obayashi Joint Venture, the question and reply may be returned to the questioner and distributed to those on the Plan Holders List for informational purposes.

END OF QBD

00 04 41 – PRE-BID REQUEST FOR SUBSTITUTION

During the bidding period, a proposed change by a bidder of a product, equipment, or service required by the Contract Documents is considered a pre-bid request for substitution. A pre-bid request for substitution will be considered as part of the questions on bid documents (QBD) process. Refer to the CM/GC's Bid Manual for QBD instructions and forms.

During the bidding period and prior to the deadline for the submission of QBDs, Bidders may submit a request for a substitution of an "or equal" product, equipment, or service specified in the Contract Documents by completing and submitting this form as an attachment to a QBD, in accordance with the QBD process. The TJPA will respond in writing to a pre-bid request for substitution in accordance with the QBD process and deadlines specified in the bidding documents.

Pre-bid requests for substitution requested during the bidding period and accepted by Addendum prior to opening of bids are included in the Contract Documents.

Spec. Section: _____ Date: _____

Drawing Sheet: _____ Paragraph(s): _____

Detail(s): _____

Proposed Substitution: _____

Manufacturer/Address/Phone: _____

Trade Name/Model No.: _____

Product History: ☐ New ☐ 2-5 years old ☐ 5-10 years old ☐ More than 10 years old

Differences between proposed substitution and specified product (attach required point-by-point comparative data):

Reason for not providing specified item:

Similar installation where proposed substitution has been used (Project/Address/Architect/Owner/Date Installed):

Proposed substitution affects other parts of the Work: ☐ No ☐ Yes: explain

Changes or modifications needed to coordinate other parts of the Work that will be necessary to accommodate the proposed substitution:



Transbay Transit Center

Transbay Transit Center

TG16.0 Interiors/Finishes

VE Process

SECTION 00 04 20 – VALUE ENGINEERING PROPOSALS

PART 1 – GENERAL

1.1 SUMMARY

- A. Bidders are encouraged to submit Value Engineering proposals in conjunction with their Bids (a "Pre-bid VE proposal"). Following award of a Trade Work Package subcontract ("Subcontract"), Trade Subcontractors are encouraged to submit Value Engineering proposals during the performance of the Work (a "Post-contract-award VE proposal"). This section addresses both Pre-Bid and Post-contract-award VE proposal (collectively referred to as a "VE proposal") requirements and procedures.

1.2 DEFINITION

- A. "Value Engineering" or "VE" as used in this section is a tool whereby Bidders or Trade Subcontractors use their expertise to develop, prepare, and submit proposals to optimize value during the performance of the Work.
- B. "Bidder" or "Bidders" as used in this section shall mean potential Trade Subcontractors that submit a bid directly to the CM/GC. A lower tier subcontractor or a material supplier to a potential Trade Subcontractor is not a Bidder for purposes of this section and cannot submit Pre-bid VE proposals directly to the CM/GC.
- C. "Trade Subcontractor" or "Trade Subcontractors" as used in this section shall mean the entity that has been awarded a Trade Work Package and executed a Subcontract with the CM/GC for the Trade Work Package.

1.3 REQUIREMENTS

- A. VE proposals must include:
 - 1. A VE technical proposal:
 - a. A detailed description of the VE work to be performed, including the means and methods of performance.
 - b. A description of other work that may be affected by the VE work.
 - c. A description of proposed changes, if any, to the Contract Documents and a listing of those Contract Documents as a result of the VE work.
 - d. A description of known or anticipated impacts to LEED certification as a result of the VE work.
 - 2. A VE cost proposal:
 - a. Any known or anticipated schedule impacts stated in plus or minus working days.
 - b. The costs savings stated as a specific dollar amount.
 - c. A description of bid items affected and resulting quantity changes, if any.
 - 3. Name and address of projects on which a similar VE proposal has been used and the date the proposal was implemented.
- B. If a VE proposal calls for changes in material, a request for substitution must accompany the VE proposal. Refer to Section 01 16 30.



Transbay Transit Center

Transbay Transit Center

TG16.0 Interiors/Finishes

Webcor and Subguard Prequalification Process

Step 1:

Email:

Mary Hobbs, Estimating mhobbs@Webcor.com

Robert Kane, VP Finance robert@webcor.com

Subject line: Transbay TGXX.XX

- Full name of Contact
- Title of Contact
- E-mail of Contact
- Full legal company name
- Mailing address
- Phone number
- Fax number
- Contractor's license number
- Federal I.D. No
- Scope of work
- Financials over last 2 years (audited or review)

Email or Mail

Robert Kane, VP Finance

175 Harbor Bay Parkway, Suite 200

Alameda, CA 94502

Step 2:

- Mary Hobbs will send you an email with a link to the Webcor Builders prequalification system
- Click the link and upload the required information
- Once you are finished click the submit button

Step 3:

- Financials and Qualifications will be evaluated by WOJV



Transbay Transit Center

Transbay Transit Center

TG16.0 Interiors/Finishes

Questions?



Transbay Transit Center

Transbay Transit Center

TG16.0 Interiors/Finishes

SBE Program Overview/Participation Goal





Transbay Transit Center

Transbay Transit Center

TG16.0 Interiors/Finishes

SBE PROGRAM OVERVIEW

Certification & Certifying Agencies



DBE



SBE



LBE



Transbay Transit Center

Transbay Transit Center

TG16.0 Interiors/Finishes

Veteran Business & Workforce Participation





Transbay Transit Center

Transbay Transit Center

TG16.0 Interiors/Finishes

Overall SBE Project Participation Goal: 17%

- 144 SBEs to date with a total of 167 contracts





Transbay Transit Center

Transbay Transit Center

TG16.0 Interiors/Finishes

Participation Goal

19% SBE Participation Goal for this Package

Focus on “Trade Package Specific Information”

- Certifications: SBE/DBE/LBE
- Certification: Assistance Provided By Program
- Compliance: Commercially Useful Function Guidelines



Transbay Transit Center

Transbay Transit Center

TG16.0 Interiors/Finishes

E. Subcontractor List (SL) – Project Bidding Manual

E. Subcontractor List (SL)

Bidder shall provide the requested information for each subcontractor who shall perform work in excess of 1/2 of 1% of the Grand Total Bid Price. If this project involves the construction of streets, highways, or bridges, Bidder shall provide the information for each subcontractor who shall perform in excess of 1/2 of 1% of the Grand Total Bid Price or \$10,000, whichever is greater.

Under San Francisco Administrative Code section 6.21A(9) and California Public Contract Code section 4104, failure to provide at a minimum the name, location of the place of business, and the portion of work to be performed by each such subcontractor may render the bid nonresponsive or the Bidder unqualified to perform the work under this Contract. Bidders may provide license numbers or additional identifying information within 24 hours of the time bids are received. Where Webcor/Obayashi Joint Venture cannot identify a subcontractor with the information provided by a Bidder or where conflicting information is provided, Webcor/Obayashi Joint Venture may consider the subcontractor unlisted for purposes of Public Contract Code section 4106.

Bidder shall also list all SBE subcontractors and suppliers, including the respective subcontract dollar amounts for each, on the Bidders/Proposers Information Form in order to receive participation credit toward the SBE participation goal. Failure to include this information with the Bid may result in a determination that the Bidder has not met the SBE participation goal and its bid is therefore nonresponsive.

Subcontractor Name:

Address:

Portion of Work:

Amount of Subcontract:

Contractor's License No.:

San Francisco Business Tax Registration No.:



TG16.0 Interiors/Finishes

Bidder/Proposer Information Request From 00 08 21/AT3-B

**TRANSBAY JOINT POWERS AUTHORITY
BIDDERS/PROPOSERS INFORMATION REQUEST FORM
SECTION 00 08 21/AT3-B**

To be completed by Prime Contractor and submitted as part of bid/proposal.

NAME OF PROJECT/PROPOSAL							PROJECT/PROPOSAL NUMBER						
PROPOSER BUSINESS NAME AND ADDRESS													
NAME OF PERSON SUBMITTING BID					SIGNATURE OF PROPOSER					DATE			
CONTACT PERSON NAME					CONTACT PHONE NUMBER			CONTACT EMAIL					
IMPORTANT: 1) Identify all DBE/SBE firms being claimed for credit. 2) List names of all DBE/SBE subcontractors and their respective items of work. 3) Attach a copy of the proof of DBE/SBE certification for each DBE/SBE subcontractor listed on this form. 4) Attach "Intent to Perform" letter signed by the subcontractor.													
LIST BUSINESS FIRM(s) List Name, Address, and Contact Person (if not the same as above)							DBE-SBE Participation		Award Amount			Percentage of Contract Participation	
A. PRIME Contractor							Certified DBE or SBE (Y/N)		Certifying Agency		Type of DBE or SBE **	Award Amount	Percentage of Contract Participation
B. Subcontractor/Vendor/Joint Venture													



Transbay Transit Center

Transbay Transit Center

TG16.0 Interiors/Finishes

Remember to sign all forms!!

Questions?

Thank You!