



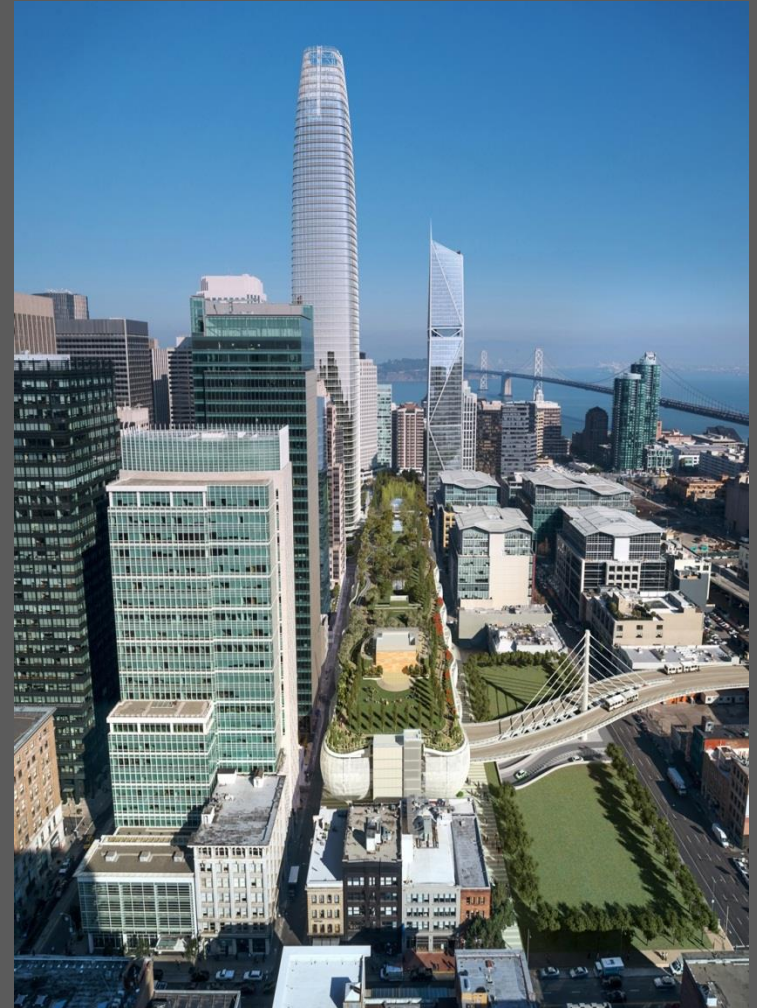
Transbay Transit Center

TRANSBAY TRANSIT CENTER

TG08.7 Glass Floors

Pre-Bid Question and Answer Session
Webcor/Obayashi Joint Venture Office
175 Beale St.
San Francisco, CA
2:00PM October 7, 2014

Please sign in!





Transbay Transit Center

Transbay Transit Center

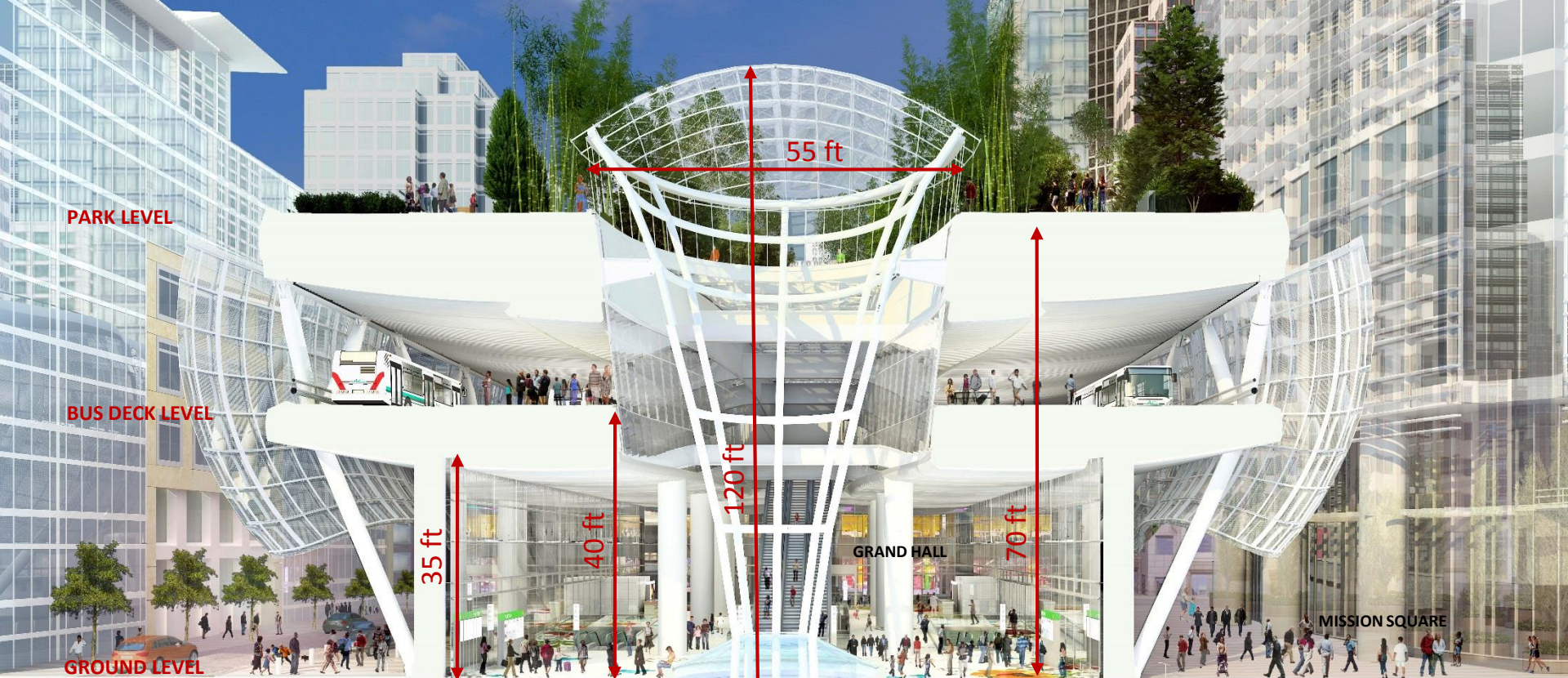
TG08.7 W-12 & W-13 Glass Floors

Project General Information

- Client: Transbay Joint Powers Authority (TJPA)
- Construction Manager/General Contractor: Webcor/Obayashi Joint Venture
- Architect: Pelli Clarke Pelli Architects / Adamson Associates









NATOMA STREET VIEW – METAL AWNING





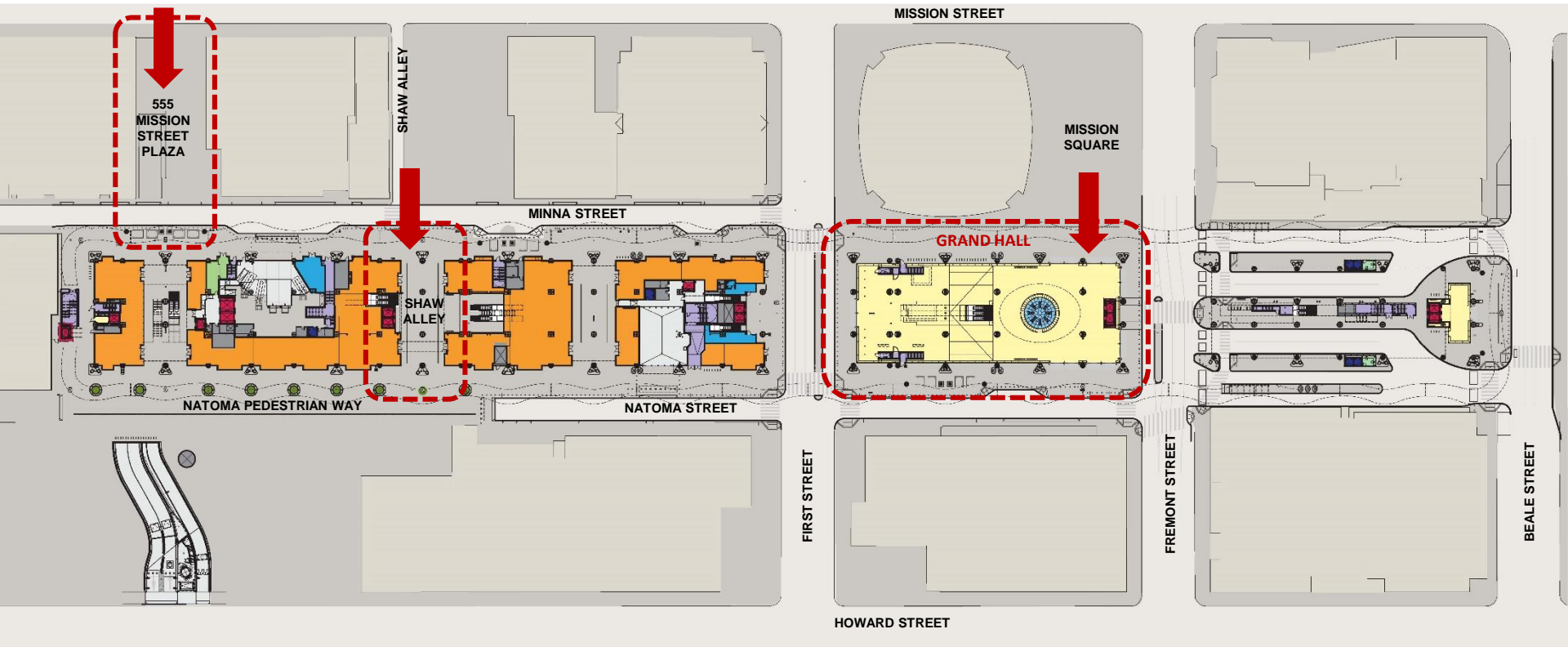
BEALE STREET VIEW



FIRST STREET VIEW

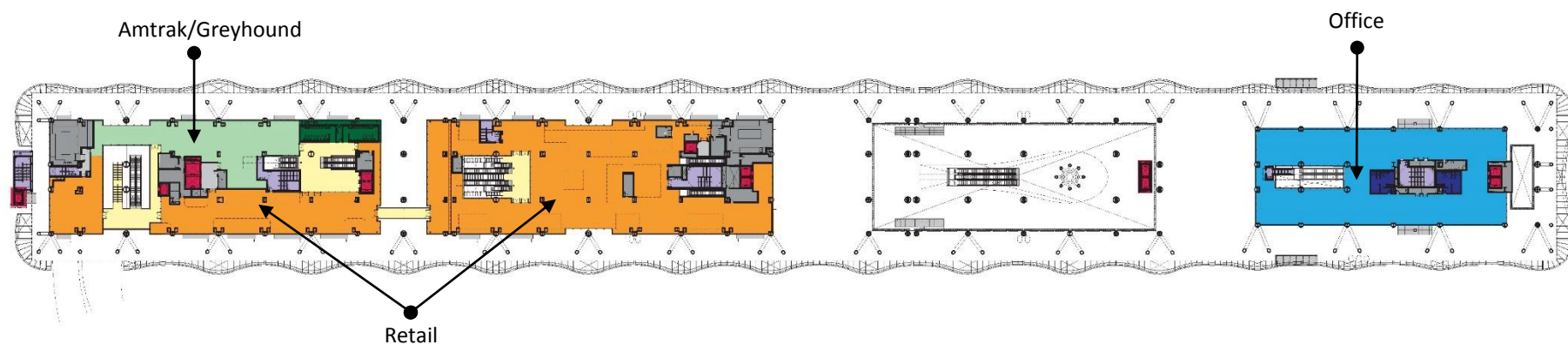


Transbay Transit Center



GROUND LEVEL PLAN

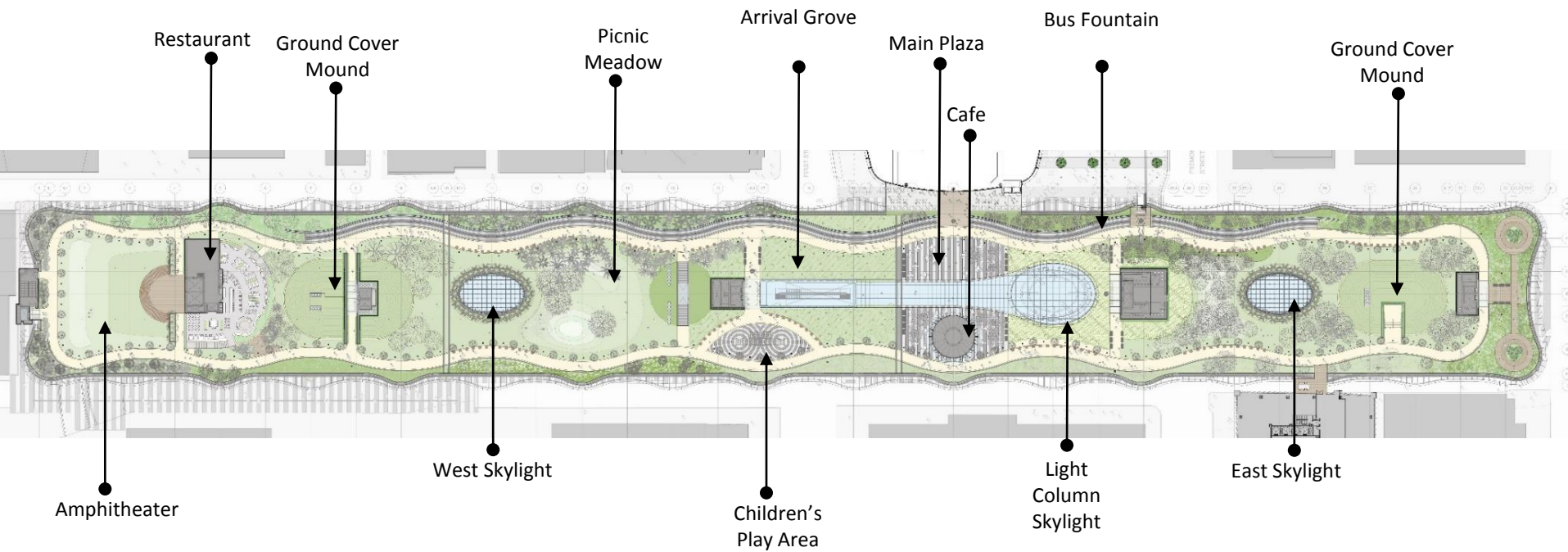




Second Level

37 Bus Bays

Bus Ramp





GRAND HALL





GRAND HALL







BUS DECK





ROOF PARK



Transbay Transit Center

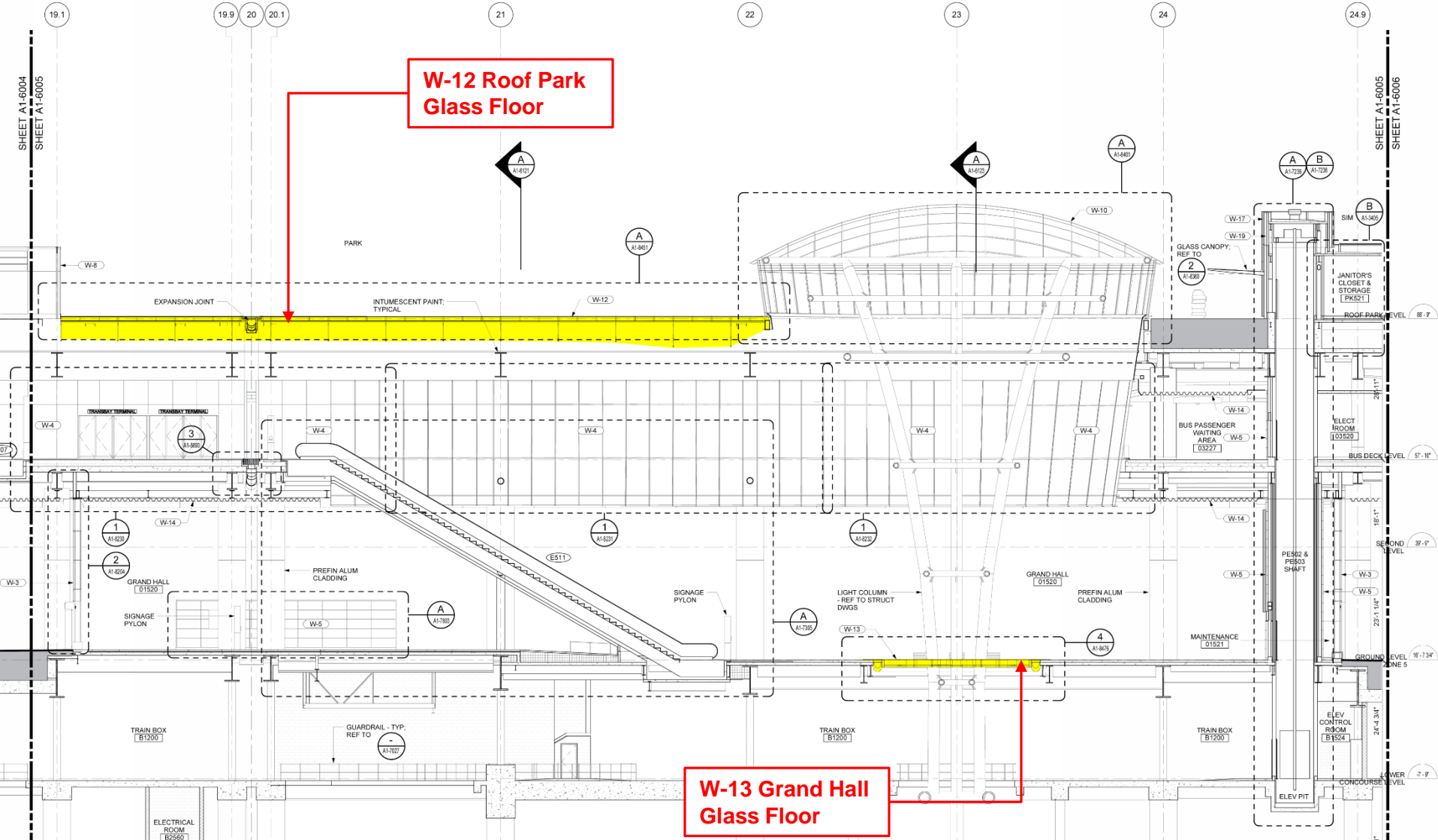




Transbay Transit Center

Transbay Transit Center

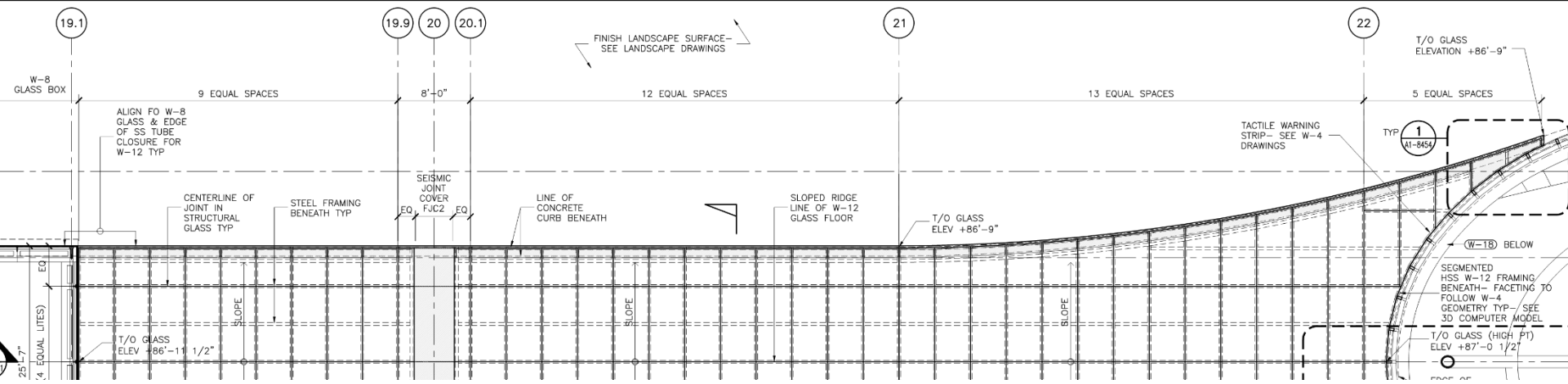
TG08.7 W-12 & W-13 Glass Floors





TG08.7 W-12 & W-13 Glass Floors

SCALE: $\frac{3}{16}'' = 1'-0''$
000, A1-6005



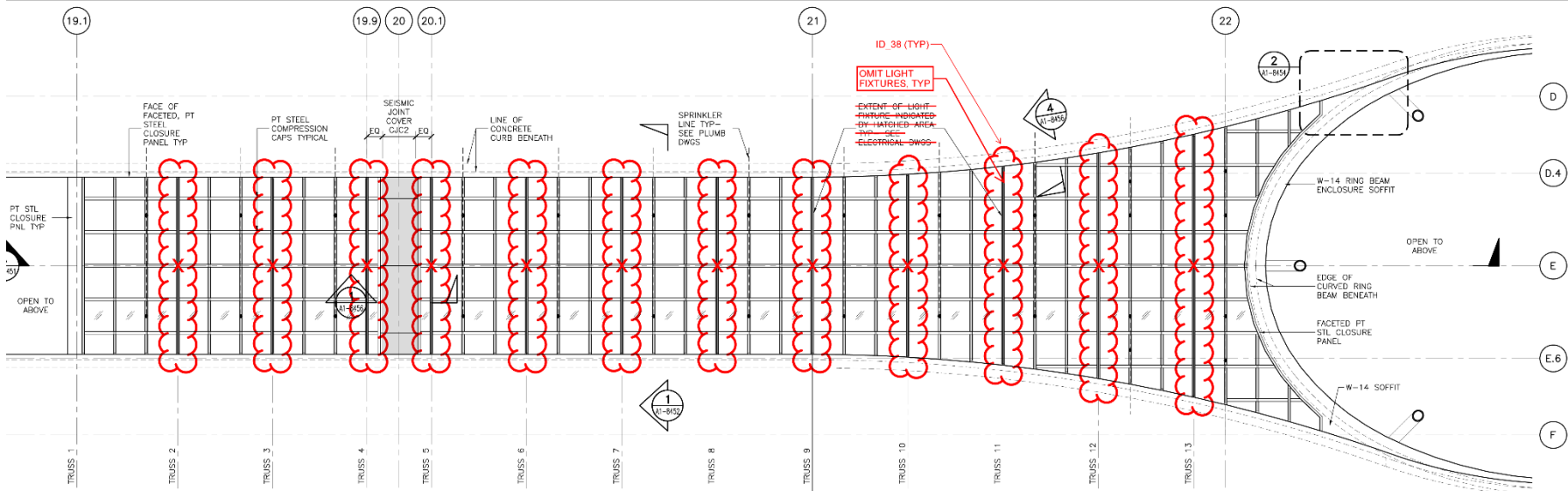
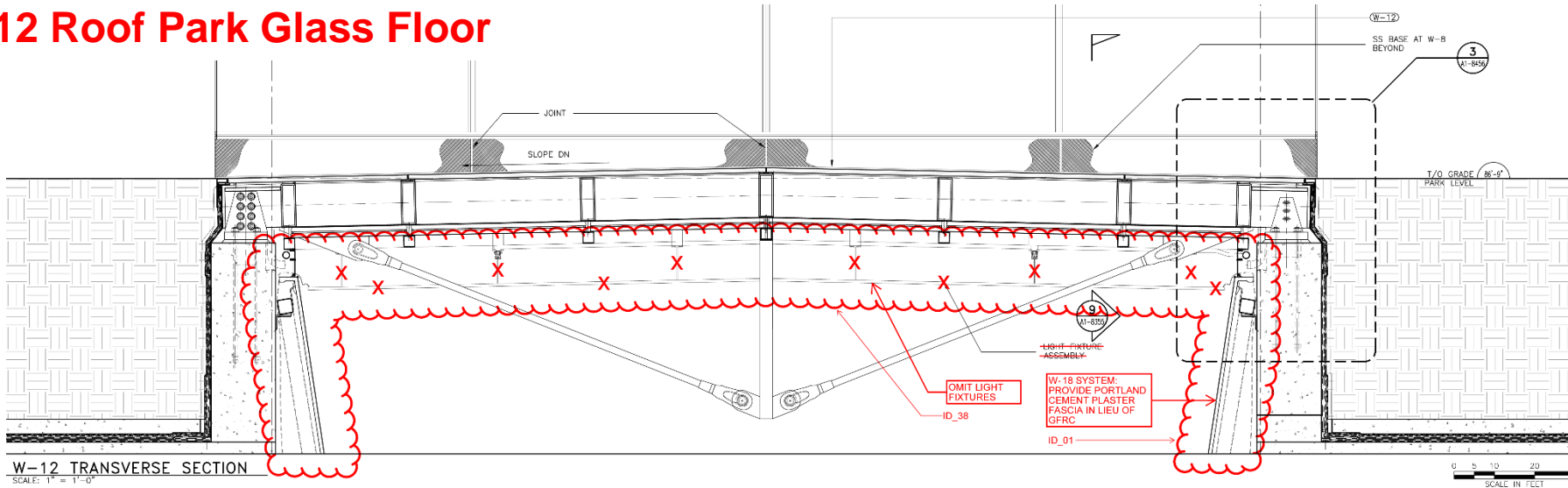


Transbay Transit Center

Transbay Transit Center

TG08.7 W-12 & W-13 Glass Floors

W-12 Roof Park Glass Floor



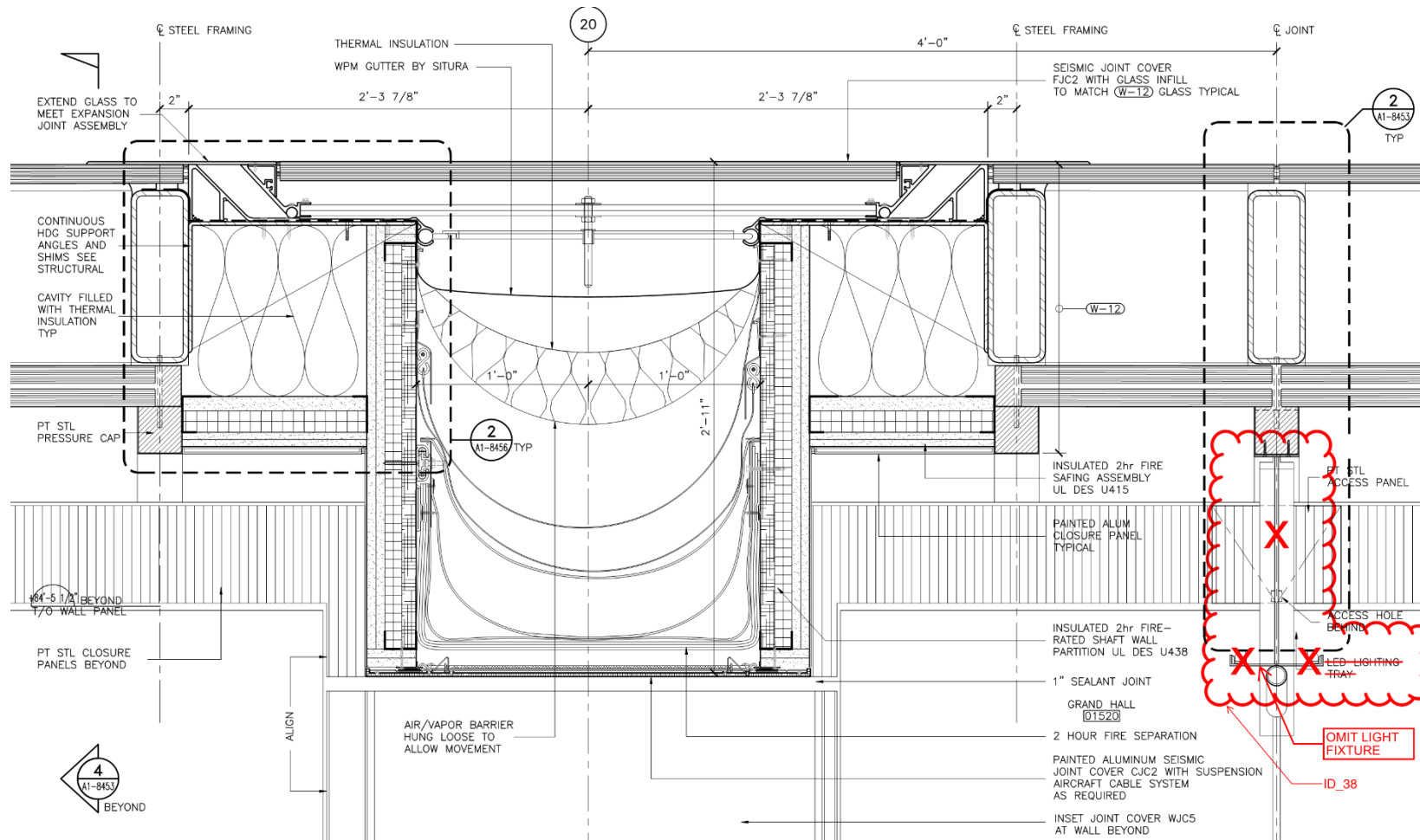


Transbay Transit Center

Transbay Transit Center

TG08.7 W-12 & W-13 Glass Floors

W-12 Roof Park Glass Floor



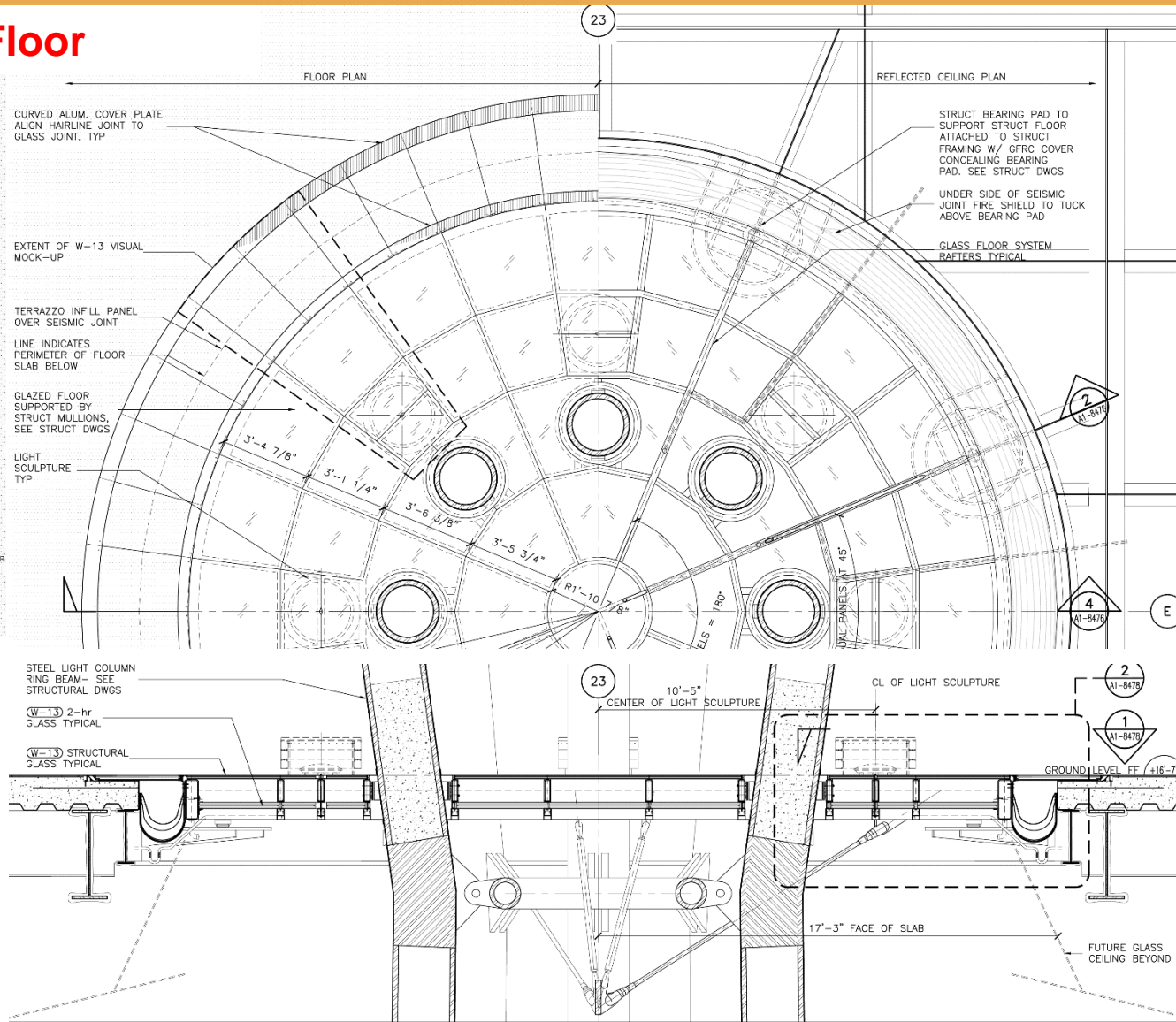


TG08.7 W-12 & W-13 Glass Floors

100-T COLUMN
STRUCTURAL
MEMBERS SEE
STRUCTURAL
DRAWINGS

100-T SCULPTURE
TIP

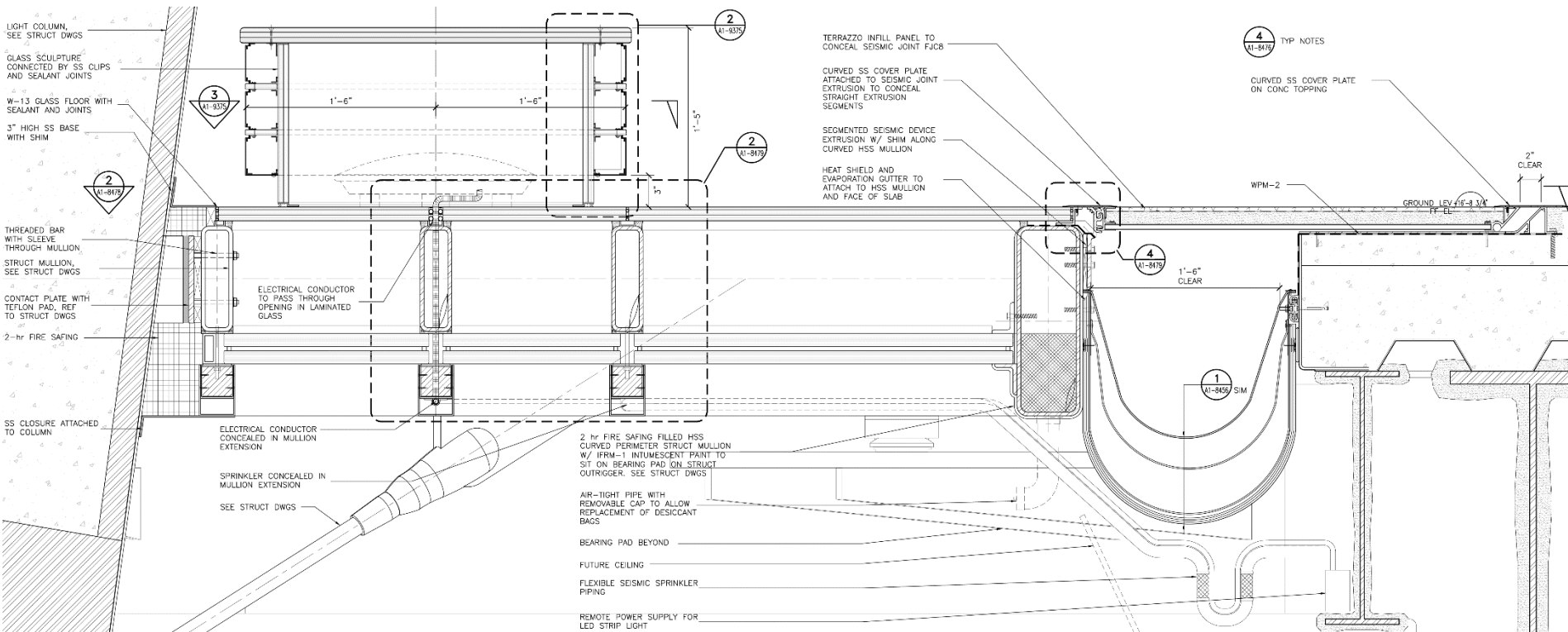
100-T GLASS FLOOR





TG08.7 W-12 & W-13 Glass Floors

W-13 Grand Hall Glass Floor





Transbay Transit Center

Transbay Transit Center

TG08.7 W-12 & W-13 Glass Floors

Questions?



Transbay Transit Center

Transbay Transit Center

TG08.7 W-12 & W-13 Glass Floors

IFB Package Timeline

Proposal Package Issued:	September 23, 2014
Pre-Proposal Conference:	October 7, 2014 (2:00 p.m.)
Questions/Clarifications (QPD) Due:	December 2, 2014 (2:00 p.m.)
Pre-bid Request for Substitution Due:	December 2, 2014 (2:00 p.m.)
Proposal Package Due:	December 18, 2014 (2:00 p.m.)
Proposers Notified of Interviews	January 5, 2015
Interviews	January 12 - 23, 2015
Notification of Intention to Award Contract:	January 26, 2015
Protest Period:	January 26 - February 2, 20
TJPA Board Vote to Approve the Contract Award:	Month XX, 20XX



Transbay Transit Center

Transbay Transit Center

TG08.7 W-12 & W-13 Glass Floors

RFP SCORING – 1,000 POINTS

QUALIFICATIONS, STAFFING, FINANCIAL INFORMATION AND EXPERIENCE

The qualifications, staffing, financial information and experience will be reviewed by a panel made up of representatives of the TJPA, PCPA and Webcor/Obayashi Joint Venture.

50

ESSENTIAL REQUIREMENTS WORKSHEET

- | | | |
|-----------------------------|---------------------------|--|
| • Licensing (10) | Surety Information (5) | Prevailing Wage and Apprentice Comp (5) |
| • Environmental Matters (5) | Insurance (5) | Claims (-30 to 0) – Section has deductive points |
| • Safety (5) | Financial Information (5) | Disputes, Arbitration & Litigation (5) |
| • Business Organization (5) | | |

50

FEE PROPOSAL

- The Fee Proposal (a combination of the lump sum design fee, Construction Fee and Construction Overhead) The Proposer with the lowest combined fee will be awarded the full 650 points.
 - Each subsequent Proposer will be awarded a percentage of the possible 650 points equivalent to the percentage difference between its proposal and the lowest proposal. The numerical value of percentage difference between the two proposals shall be subtracted from 650 and the subsequent resultant will be the number of points awarded. For example:
 - Proposer A proposes a combined fee of \$100.
 - Proposer B proposes a combined fee of \$110.
 - Therefore, proposer A will be awarded 650 points and proposer B is awarded 585 points ($(\$110 - \$100) / 100 = 10\%$; therefore $650 \text{ points} - (650 \times 10\%) = 585$).

650



Transbay Transit Center

Transbay Transit Center

TG08.7 W-12 & W-13 Glass Floors

RFP SCORING – 1,000 POINTS - Continued

DESIGN PROPOSAL

- Each Proposer shall provide proposal drawings (minimum 8½ x 11-inch) which clearly define the components of the proposed system to be provided by the Proposer. Proposal drawings shall address typical details of the proposed system in sufficient detail and scale to demonstrate compliance with the specified performance criteria. Proposer shall identify critical items that affect performance criteria, erection and fabrication, or other areas that may lead to design modification. Proposer shall submit an outline of structural analysis procedures and analysis of glazing and supporting structure. Proposer shall submit a description of the proposed erection procedures including erection joint details. Erection joint details shall be in sufficient detail to demonstrate compliance with the specified performance criteria and design intent. The name and resume of engineer of record for the system shall be provided. Proposer shall:
 - Provide a list of proprietary products intended for use in the construction and the names of manufacturers/suppliers of “standard” and/or custom components.
 - Include typical details for members, joints, anchorage and glazing system.
 - Show details of support system, method of attachment to building structure, anchorage details and interface with adjacent work
 - Proposers will be invited to participate in oral interviews at a specified time, date and location to clarify their Proposals. During the oral interview, the Proposers shall be required to deliver a brief presentation (40 minutes maximum), and will be required to respond to questions, including questions concerning the Proposer’s Proposal and presentation (50 minutes maximum).

250



Transbay Transit Center

Transbay Transit Center

TG08.7 W-12 & W-13 Glass Floors

Scope Summary Review

- W-12 Glass Floor at Roof Park Level and W-13 Glass Floor at Ground Level
- Structural Framing and Support
- Components (Waterproofing, Seismic Joints, Drainage, Light Sculptures, Fire Safing)
- Coordination (MEPF, Terrazzo, W-4 Curtain Wall, W-8 Glass Box, Scanning, Light Sculptures)
- Temporary Protection (Weather and Damage)
- Scaffolding / Temporary Structures
- Mockups (Offsite/Onsite)

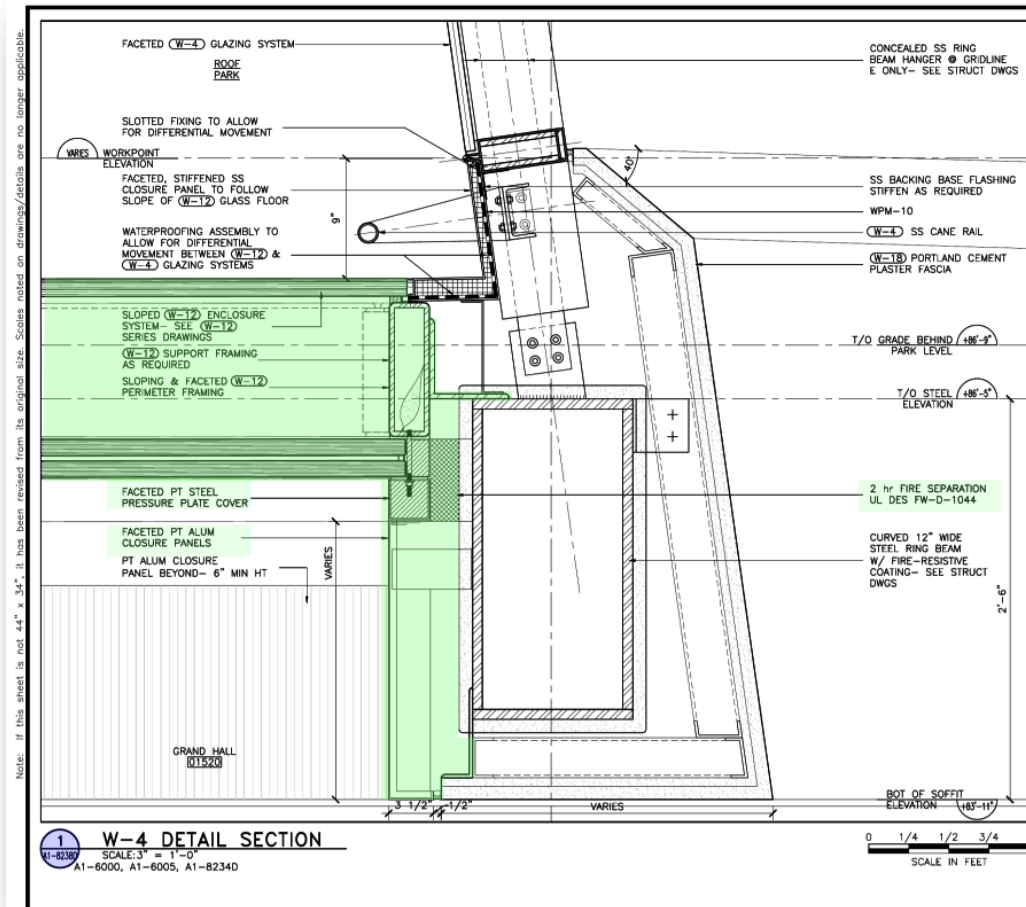


Transbay Transit Center

Transbay Transit Center

TG08.7 W-12 & W-13 Glass Floors

Coordination at W-4 Curtain Wall



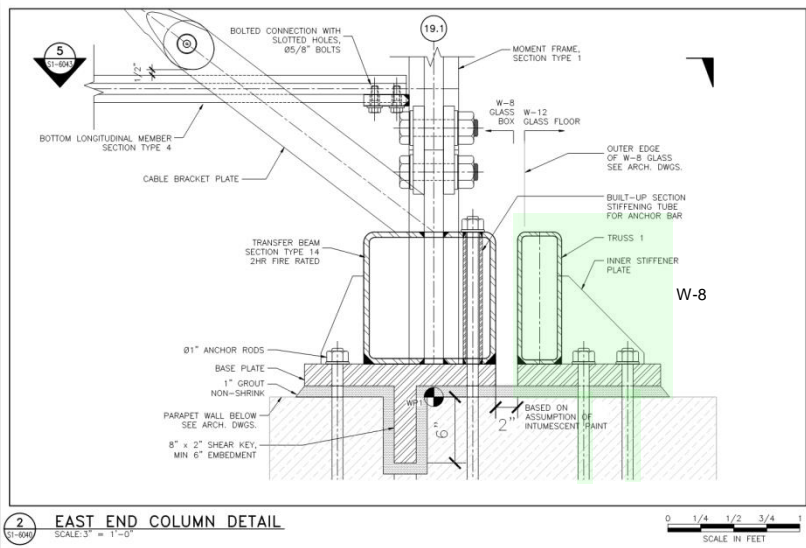


Transbay Transit Center

Transbay Transit Center

TG08.7 W-12 & W-13 Glass Floors

Coordination at W-8 Glass Box



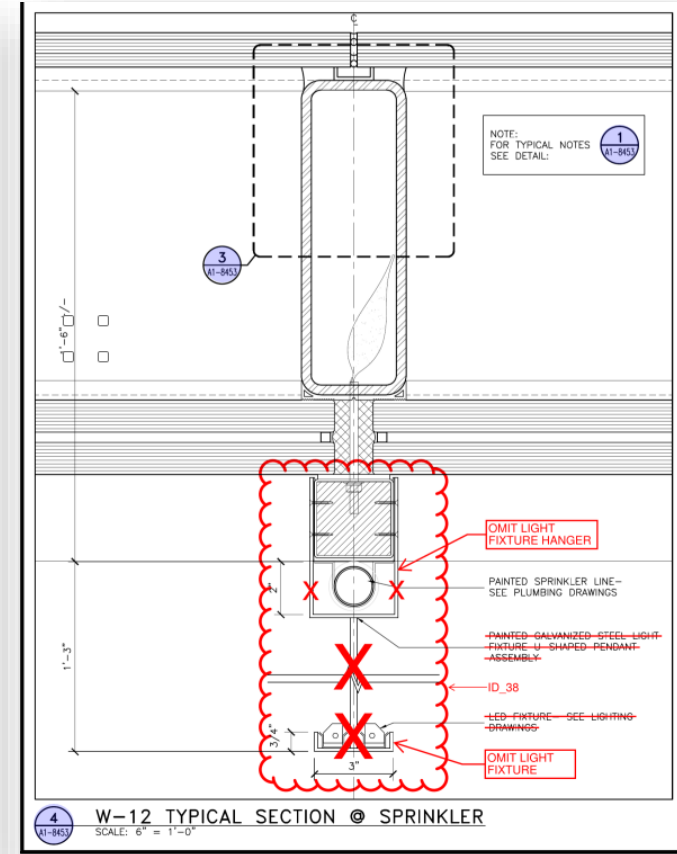
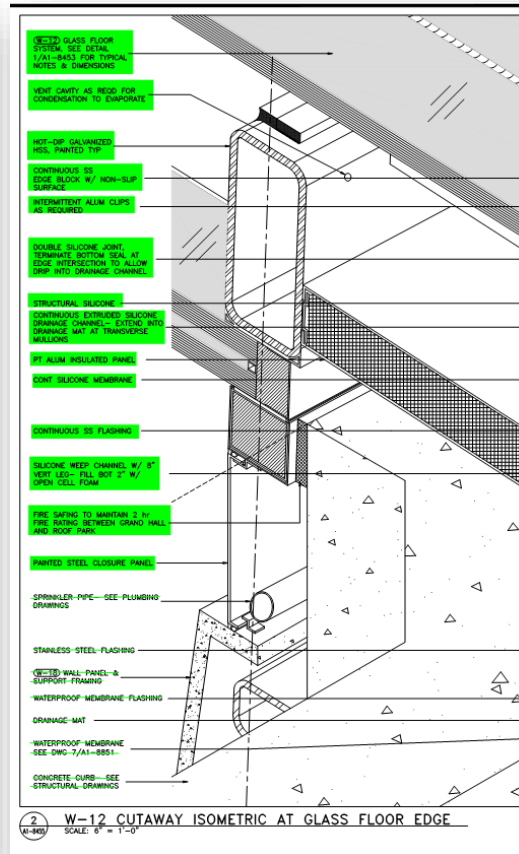
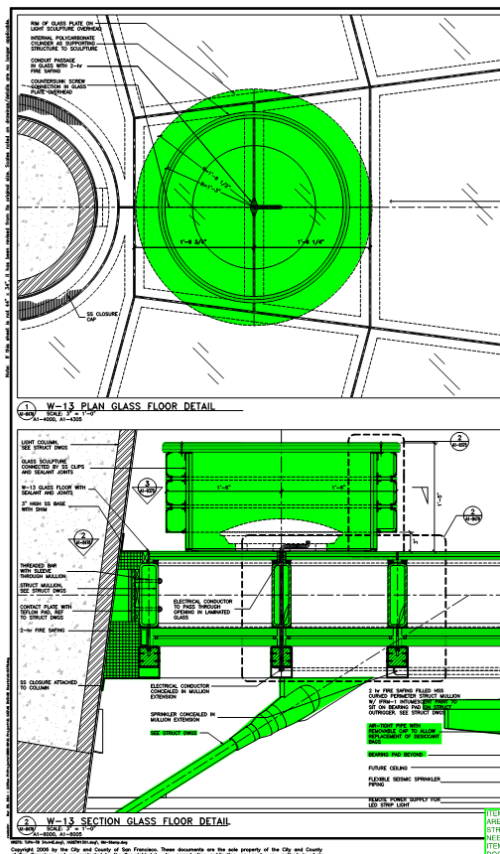


Transbay Transit Center

Transbay Transit Center

TG08.7 W-12 & W-13 Glass Floors

MEPF COORDINATION



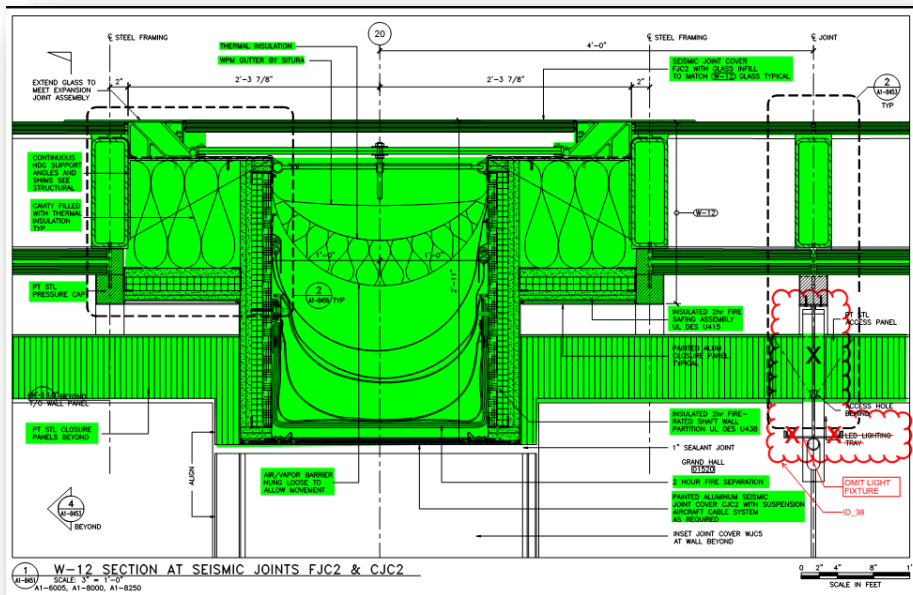


Transbay Transit Center

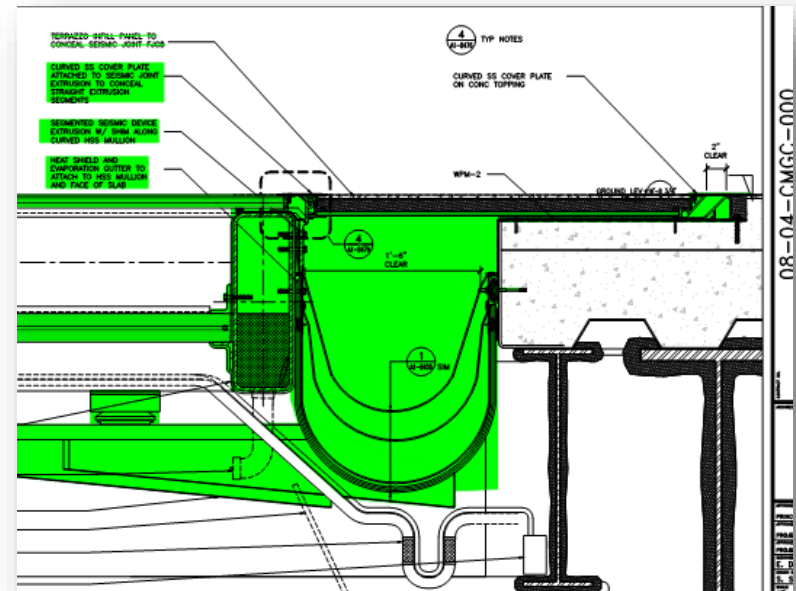
Transbay Transit Center

TG08.7 W-12 & W-13 Glass Floors

W-12 Seismic Joint



W-13 Seismic Joint & Coordination with Terrazzo Floor

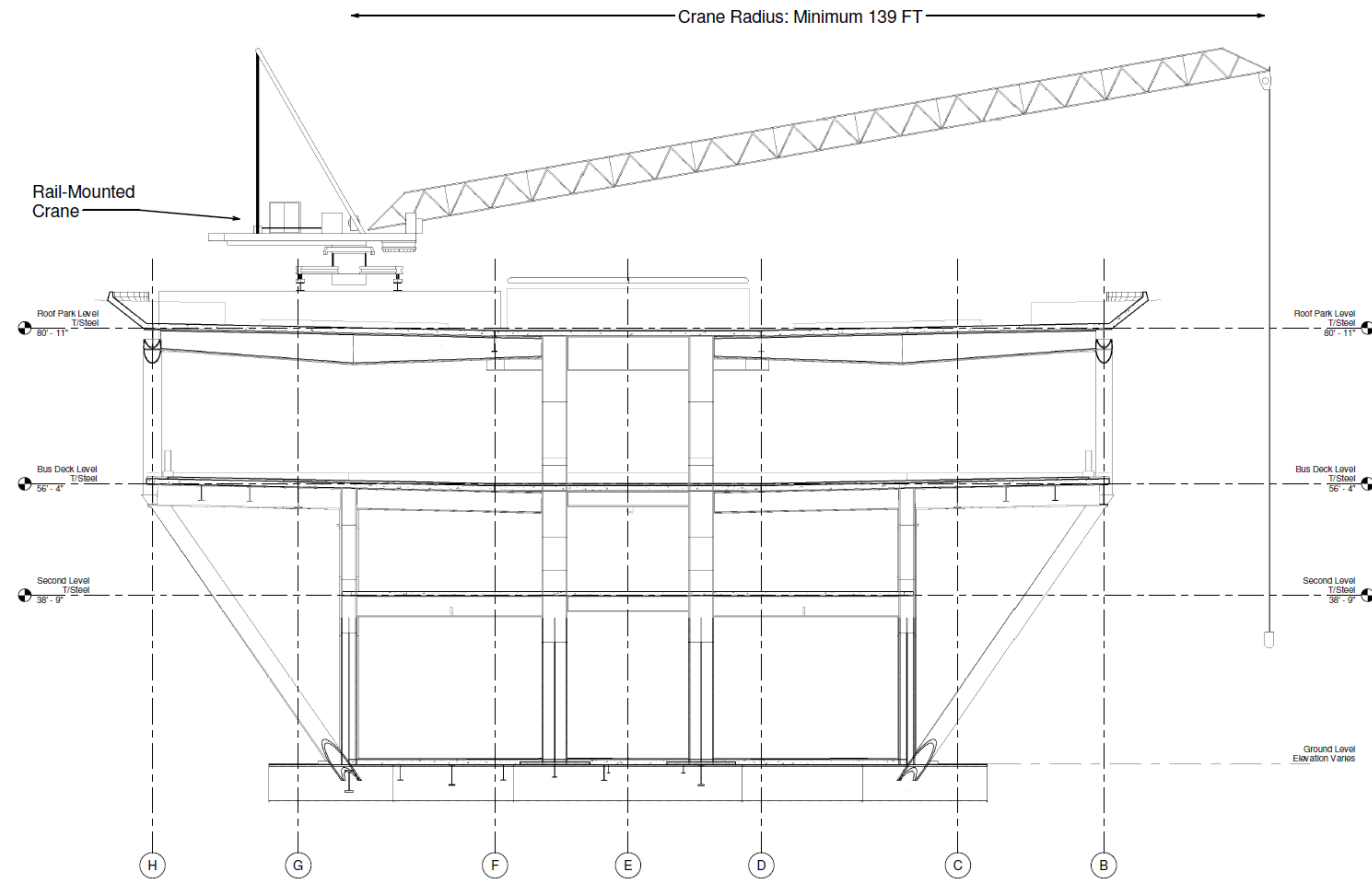




Transbay Transit Center

Transbay Transit Center

TG08.7 W-12 & W-13 Glass Floors



1 Crane Section
1/8" = 1'-0"



Transbay Transit Center

San Francisco, California

MARK	DATE	DESCRIPTION
PROJECT NO.	X	
MODEL FILE	X	
DRAWN BY	Matt Zwetzig	
CHECKED BY	X	
COPYRIGHT		

SHEET TITLE
Crane Section

X-06

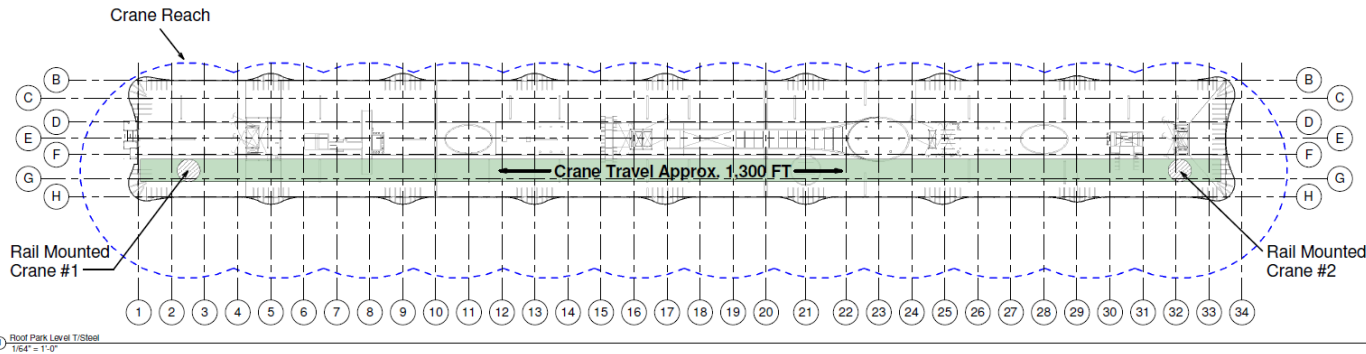
Scale AS SHOWN



Transbay Transit Center

Transbay Transit Center

TG08.7 W-12 & W-13 Glass Floors



Transbay Transit Center

San Francisco, California

MARK	DATE	DESCRIPTION
PROJECT NO:	X	
MODEL FILE:	X	
DRAWN BY:	Mark Zwolzig	
CHECKED BY:	X	
COPYRIGHT		

SHEET TITLE

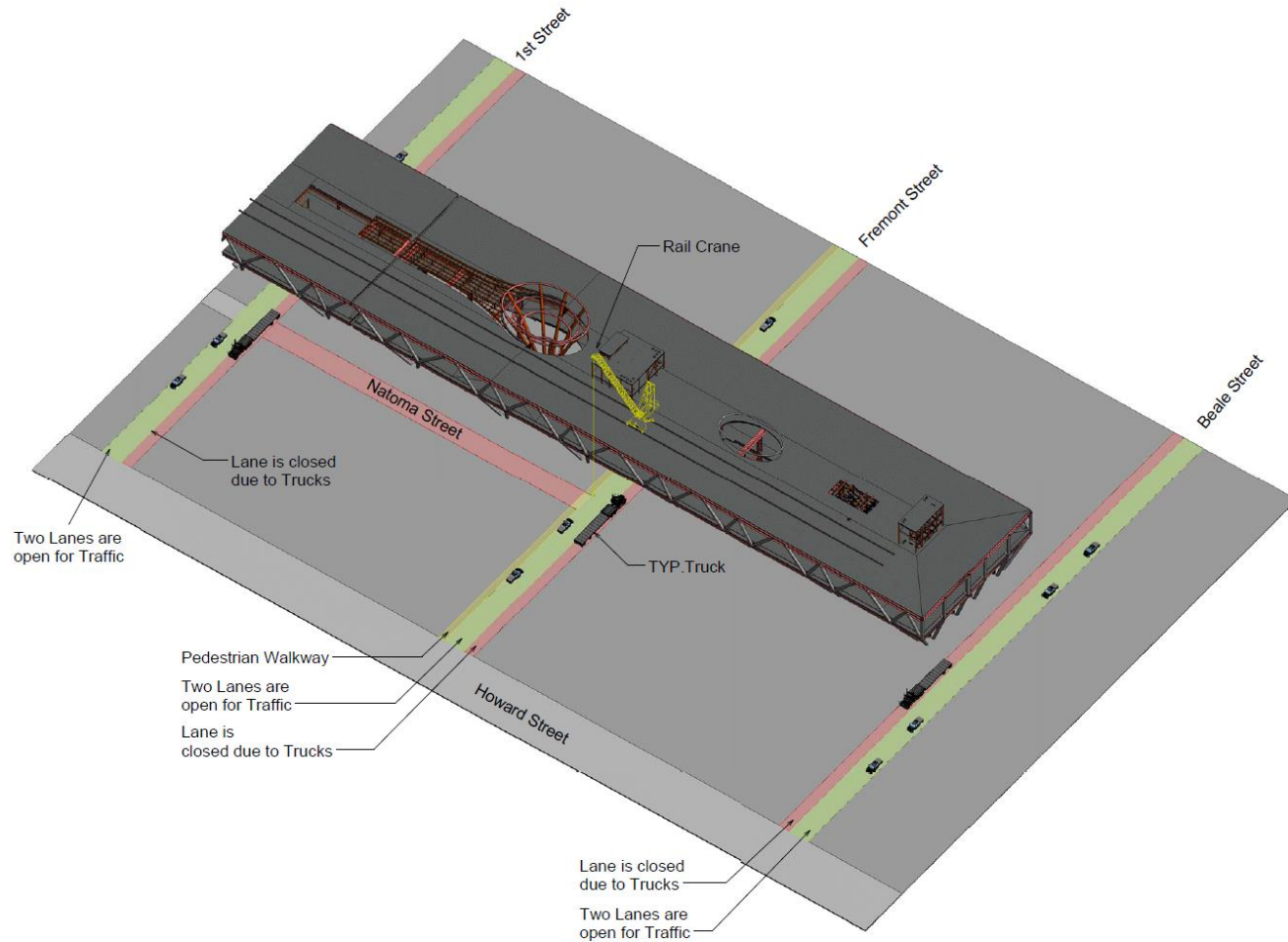
Roof
Rail-Mounted
Cranes

X-07

Scale AS SHOWN



TG08.7 W-12 & W-13 Glass Floors



Transbay Transit Center
San Francisco, California

1	4/18/13	Bridge Logistics
2	4/23/13	Update
3	12/20/13	Update
MARK	DATE	DESCRIPTION
PROJECT NO.	X	
MODEL FILE	X	
DRAWN BY:	Matt Zwetzig / Blair Hinoposa / Ty M.	
CHECKED BY:	X	
COPYRIGHT		

SHEET TITLE
<div data-bbox="1619 1183 1649 1189"> <h1>Rail Crane Logistics</h1> </div>

X-17

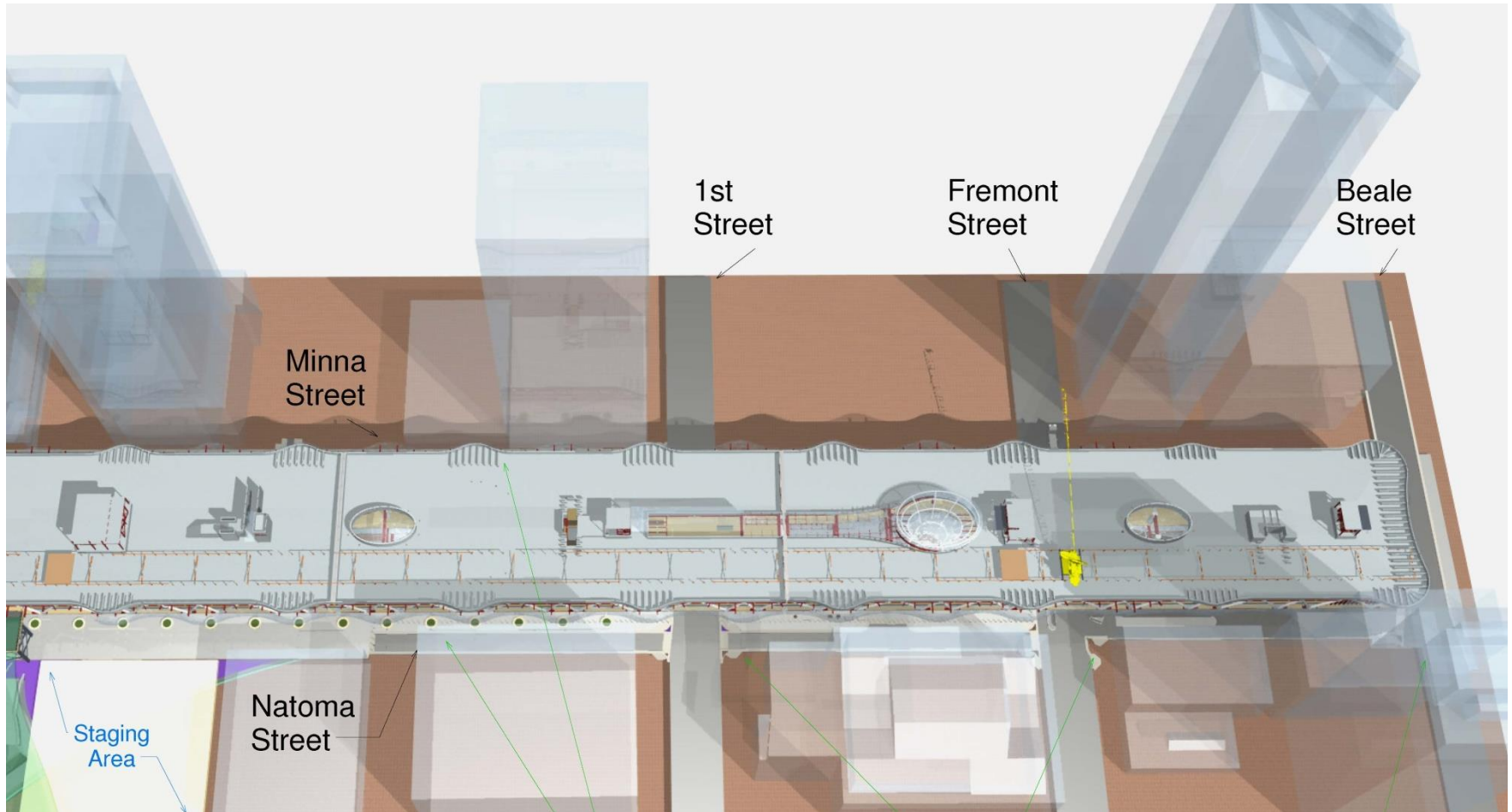
Scale AS SHOWN



Transbay Transit Center

Transbay Transit Center

TG08.7 W-12 & W-13 Glass Floors

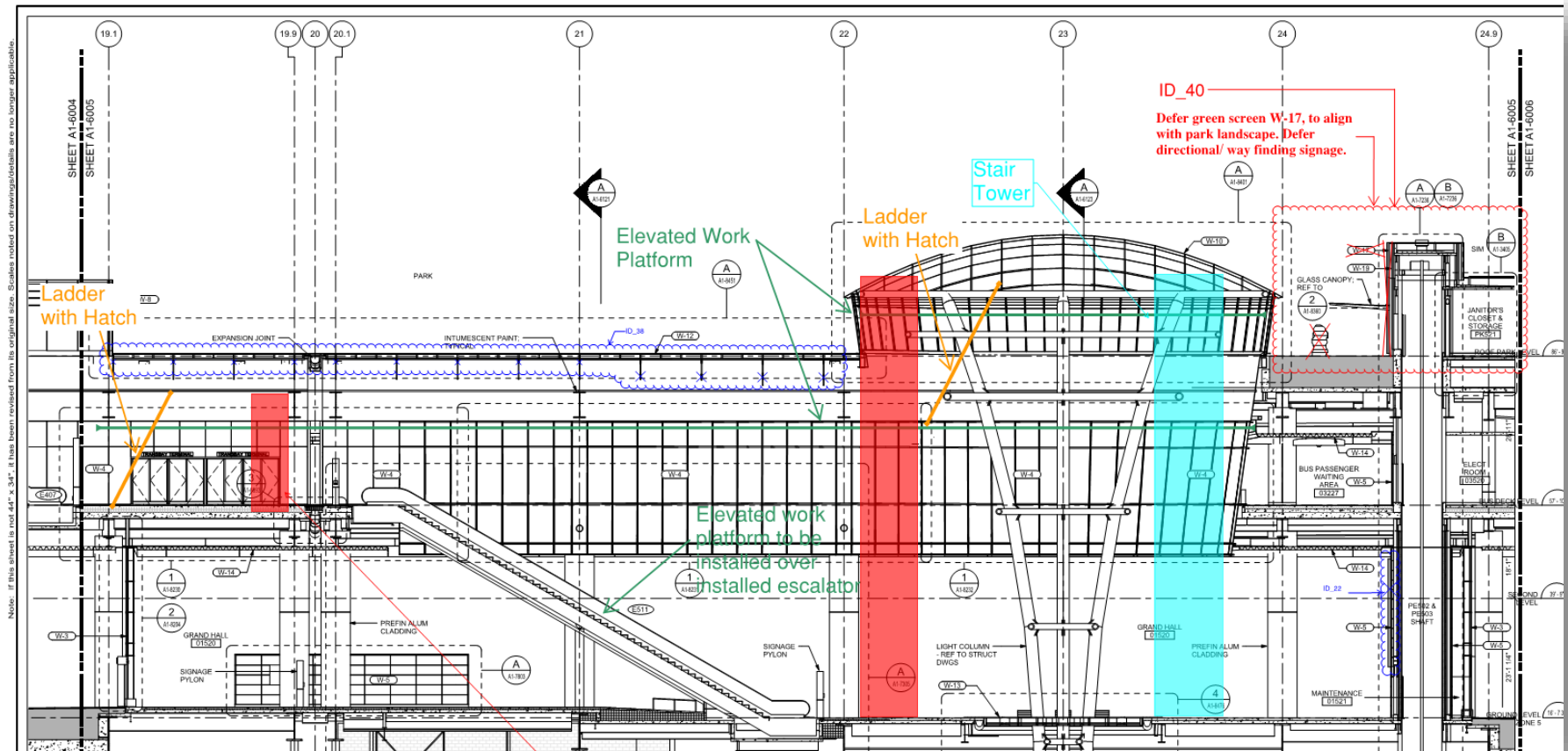




Transbay Transit Center

Transbay Transit Center

TG08.7 W-12 & W-13 Glass Floors



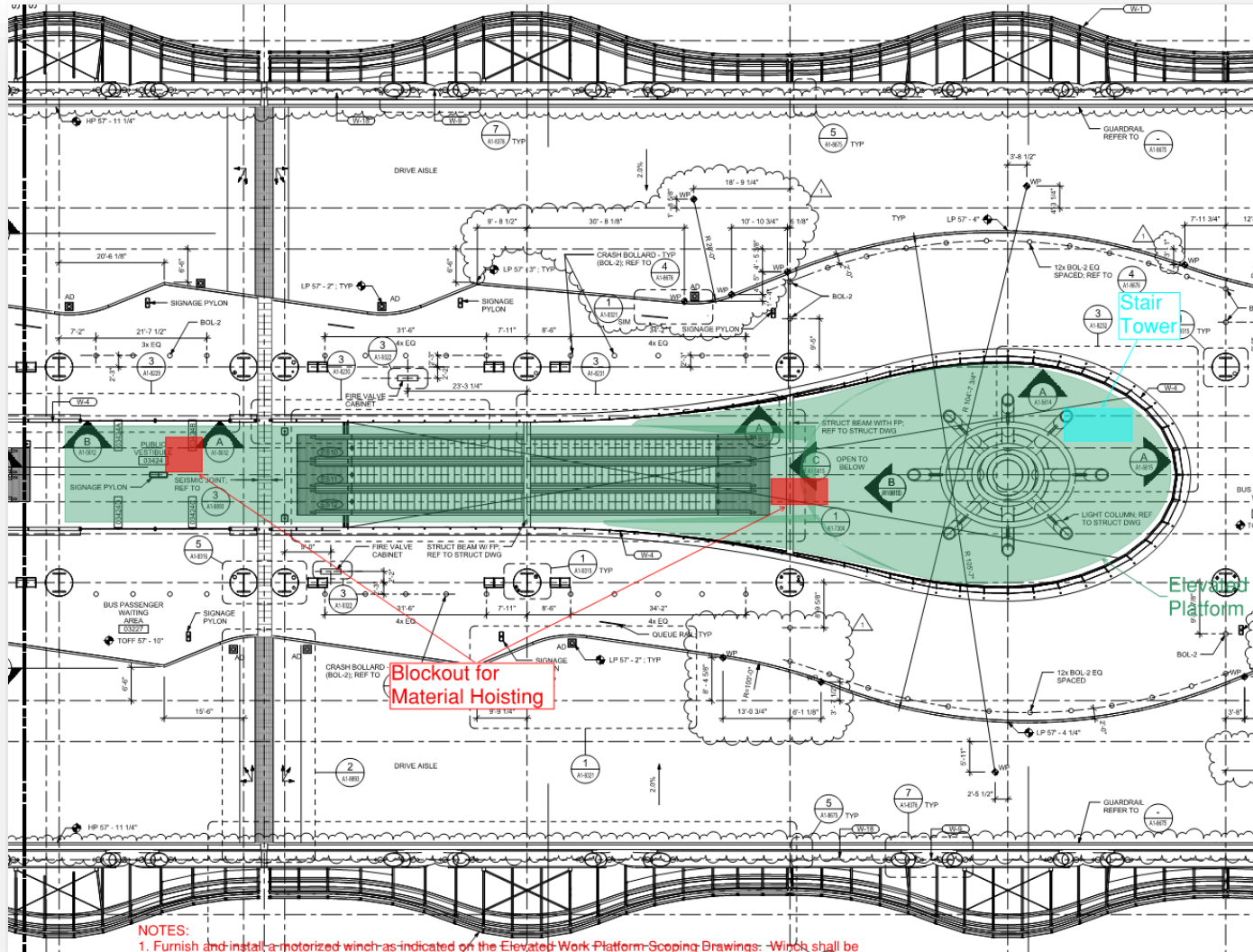
Notes: If this sheet is not 44" x 34", it has been revised from its original size. Strokes noted on drawings/details are no longer applicable.



Transbay Transit Center

Transbay Transit Center

TG08.7 W-12 & W-13 Glass Floors





Transbay Transit Center

Transbay Transit Center

TG08.7 W-12 & W-13 Glass Floors

Questions?



Transbay Transit Center

Transbay Transit Center

TG08.7 W-12 & W-13 Glass Floors

Obtaining Contract Documents

- TJPA Website
 - List of all Exhibits
 - Non Disclosure Agreement (NDA)
- Plan Room (ARC)
 - Non-SSI
 - SSI
- Box.com
 - SSI (Managed by TJPA)
 - Supplemental Documents (Managed by Webcor-Obayashi Joint Venture)



Transbay Transit Center

Transbay Transit Center

TG08.7 W-12 & W-13 Glass Floors

Request for Information

P1-0XXX to P1-0XXX

Pay close attention to the following RFIs:

RFI No.	Subject
P1-0119	GFRC at W-13
P1-0121	Mock-Up Locations in A Drawings
P1-0185	TG08.7 Glass Floor Support



Transbay Transit Center

Transbay Transit Center

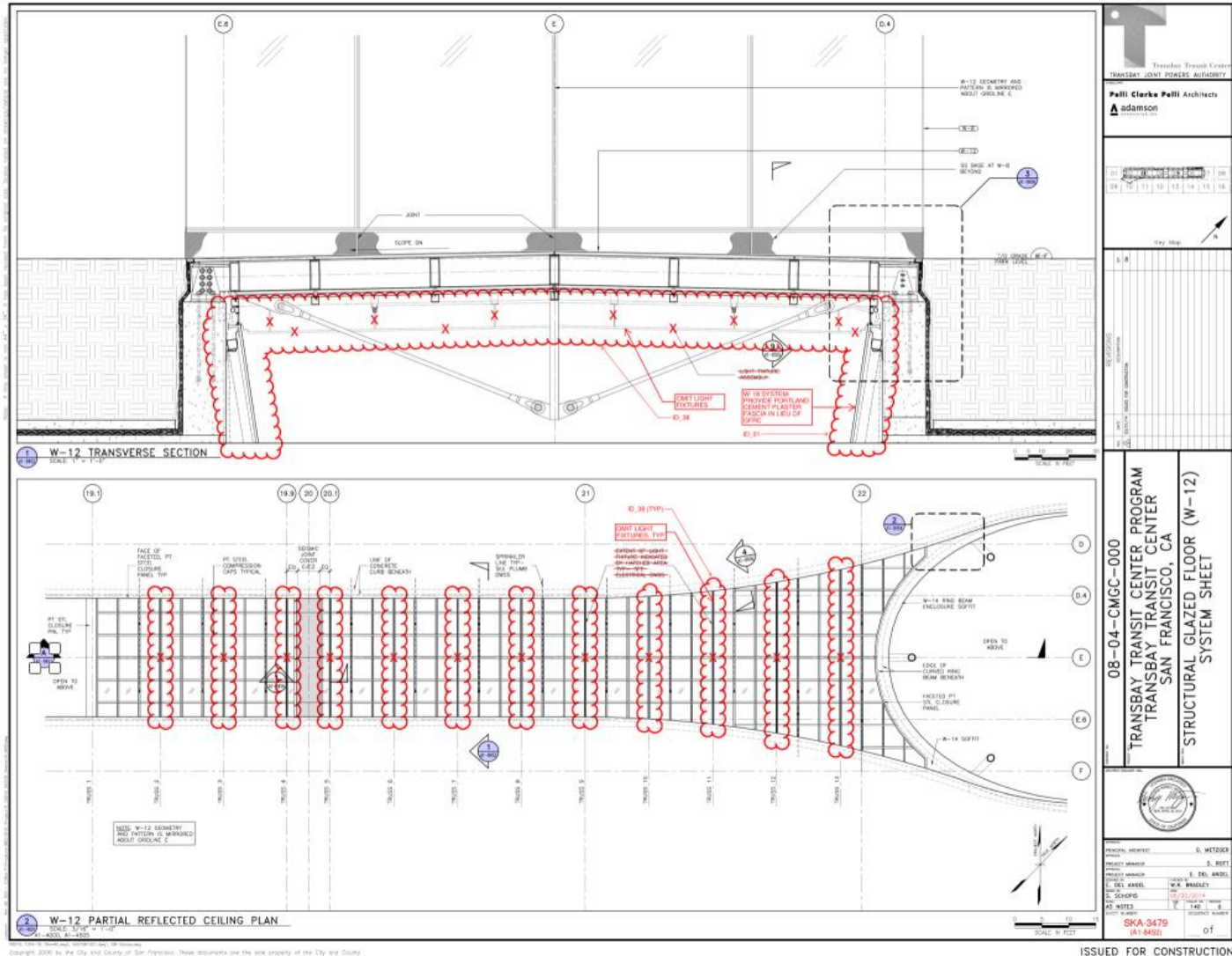
TG08.7 W-12 & W-13 Glass Floors

Redline Markups

The redline marked up drawings and narratives included with the ASI documents are designed to relay specific scopes of work that are modified to reflect scope changes. Redline markups in ASI drawings are only to be used to indicate scope modifications. These scope modifications are to be applied to the current set of drawings and specifications.



TG08.7 W-12 & W-13 Glass Floors





Transbay Transit Center

Transbay Transit Center

TG08.7 W-12 & W-13 Glass Floors

Pre-Bid Substitution Request

00 04 41 – PRE-BID REQUEST FOR SUBSTITUTION

During the bidding period, a proposed change by a bidder of a product, equipment, or service required by the Contract Documents is considered a pre-bid request for substitution. A pre-bid request for substitution will be considered as part of the questions on bid documents (QBD) process. Refer to the CM/GC's Bid Manual for QBD instructions and forms.

During the bidding period and prior to the deadline for the submission of QBDs, Bidders may submit a request for a substitution of an "or equal" product, equipment, or service specified in the Contract Documents by completing and submitting this form as an attachment to a QBD, in accordance with the QBD process. The TJPA will respond in writing to a pre-bid request for substitution in accordance with the QBD process and deadlines specified in the bidding documents.

Pre-bid requests for substitution requested during the bidding period and accepted by Addendum prior to opening of bids are included in the Contract Documents.

Spec. Section: _____ Date: _____
Drawing Sheet: _____ Paragraph(s): _____
Detail(s): _____

Proposed Substitution: _____
Manufacturer/Address/Phone: _____
Trade Name/Model No.: _____

Product History: ☐ New ☐ 2-5 years old ☐ 5-10 years old ☐ More than 10 years old

Differences between proposed substitution and specified product (attach required point-by-point comparative data):

Reason for not providing specified item:

Similar installation where proposed substitution has been used (Project/Address/Architect/Owner/Date Installed):

Proposed substitution affects other parts of the Work: ☐ No ☐ Yes: explain

Changes or modifications needed to coordinate other parts of the Work that will be necessary to accommodate the proposed substitution:



Transbay Transit Center

Transbay Transit Center

TG08.7 W-12 & W-13 Glass Floors

QBD & VE Process

B. Questions On Bid Documents (QBD)

Project: Transbay Transit Center

(WEBCOR/OBAYASHI JOINT VENTURE USE)

QBD No.: _____

Received: _____

TJPA to: _____ Date: _____

Consultant to TJPA: _____

Addendum Required? Yes: _____ No: _____

To Bidders Yes: _____ No: _____

Contract

No.: _____

To: Webcor/Obayashi Joint Venture

(See Exhibit A For Contact Information)

From: _____ Date: _____

Firm: _____ Telephone: _____

Fax: _____

Specification Section: _____ Paragraph(s): _____

Drawing Sheet: _____ Detail(s): _____

Question: _____

☐ Mark this circle if the QBD can be answered by Bidder's review of the documents. Reply with location(s) where the information can be obtained.

Reply:

By: _____ Firm: _____ Date: _____

The reply is an answer to a Bidder's question. The reply does not change the Bid Documents unless the information contained therein is issued in an Addendum. At the sole discretion of Webcor/Obayashi Joint Venture, the question and reply may be returned to the questioner and distributed to those on the Plan Holders List for informational purposes.

END OF QBD

SECTION 00 04 20 – VALUE ENGINEERING PROPOSALS

PART 1 – GENERAL

1.1 SUMMARY

- A. Bidders are encouraged to submit Value Engineering proposals in conjunction with their Bids (a "Pre-bid VE proposal"). Following award of a Trade Work Package subcontract ("Subcontract"), Trade Subcontractors are encouraged to submit Value Engineering proposals during the performance of the Work (a "Post-contract-award VE proposal"). This section addresses both Pre-Bid and Post-contract-award VE proposal (collectively referred to as a "VE proposal") requirements and procedures.

1.2 DEFINITION

- A. "Value Engineering" or "VE" as used in this section is a tool whereby Bidders or Trade Subcontractors use their expertise to develop, prepare, and submit proposals to optimize value during the performance of the Work.
- B. "Bidder" or "Bidders" as used in this section shall mean potential Trade Subcontractors that submit a bid directly to the CM/GC. A lower tier subcontractor or a material supplier to a potential Trade Subcontractor is not a Bidder for purposes of this section and cannot submit Pre-bid VE proposals directly to the CM/GC.
- C. "Trade Subcontractor" or "Trade Subcontractors" as used in this section shall mean the entity that has been awarded a Trade Work Package and executed a Subcontract with the CM/GC for the Trade Work Package.

1.3 REQUIREMENTS

- A. VE proposals must include:
1. A VE technical proposal:
 - a. A detailed description of the VE work to be performed, including the means and methods of performance.
 - b. A description of other work that may be affected by the VE work.
 - c. A description of proposed changes, if any, to the Contract Documents and a listing of those Contract Documents as a result of the VE work.
 - d. A description of known or anticipated impacts to LEED certification as a result of the VE work.
 2. A VE cost proposal:
 - a. Any known or anticipated schedule impacts stated in plus or minus working days.
 - b. The costs savings stated as a specific dollar amount.
 - c. A description of bid items affected and resulting quantity changes, if any.
 3. Name and address of projects on which a similar VE proposal has been used and the date the proposal was implemented.
- B. If a VE proposal calls for changes in material, a request for substitution must accompany the VE proposal. Refer to Section 01 16 30.



Transbay Transit Center

Transbay Transit Center

TG08.7 W-12 & W-13 Glass Floors

Webcor and Subguard Prequalification Process

Step 1:

Email:

Mary Hobbs, Estimating mhobbs@Webcor.com

Tim Lutz, CFO Tim@Webcor.com

Subject line: Transbay TGXX.XX

- Full name of Contact
- Title of Contact
- E-mail of Contact
- Full legal company name
- Mailing address
- Phone number
- Fax number
- Contractor's license number
- Federal I.D. No
- Scope of work
- Financials over last 2 years (audited or review)

Email or Mail

Tim Lutz, CFO

175 Harbor Bay Parkway, Suite 200

Alameda, CA 94502

Step 2:

- Mary Hobbs will send you an email with a link to the Webcor Builders prequalification system
- Click the link and upload the required information
- Once you are finished click the submit button

Step 3:

- Financials and Qualifications will be evaluated by WOJV



Transbay Transit Center

Transbay Transit Center

TG08.7 W-12 & W-13 Glass Floors

Questions?



Transbay Transit Center

Transbay Transit Center

TG08.7 W-12 & W-13 Glass Floors

SBE Program Overview/Participation Goal





Transbay Transit Center

Transbay Transit Center

TG08.7 W-12 & W-13 Glass Floors

SBE PROGRAM OVERVIEW

Certification & Certifying Agencies



DBE



SBE



LBE



Transbay Transit Center

Transbay Transit Center

TG08.7 W-12 & W-13 Glass Floors

Veteran Business & Workforce Participation





Transbay Transit Center

Transbay Transit Center

TG08.7 W-12 & W-13 Glass Floors

Overall SBE Project Participation Goal: 17%

- 143 SBEs to date

17%





Transbay Transit Center

Transbay Transit Center

TG08.7 W-12 & W-13 Glass Floors

Participation Goal

5% SBE Participation Goal for this Package

Focus on “Trade Package Specific Information”

- Certifications: SBE/DBE/LBE
- Certification: Assistance Provided By Program
- Compliance: Commercially Useful Function Guidelines



Transbay Transit Center

Transbay Transit Center

TG08.7 W-12 & W-13 Glass Floors

E. Subcontractor List (SL) – Project Bidding Manual

E. Subcontractor List (SL)

Bidder shall provide the requested information for each subcontractor who shall perform work in excess of 1/2 of 1% of the Grand Total Bid Price. If this project involves the construction of streets, highways, or bridges, Bidder shall provide the information for each subcontractor who shall perform in excess of 1/2 of 1% of the Grand Total Bid Price or \$10,000, whichever is greater.

Under San Francisco Administrative Code section 6.21A(9) and California Public Contract Code section 4104, failure to provide at a minimum the name, location of the place of business, and the portion of work to be performed by each such subcontractor may render the bid nonresponsive or the Bidder unqualified to perform the work under this Contract. Bidders may provide license numbers or additional identifying information within 24 hours of the time bids are received. Where Webcor/Obayashi Joint Venture cannot identify a subcontractor with the information provided by a Bidder or where conflicting information is provided, Webcor/Obayashi Joint Venture may consider the subcontractor unlisted for purposes of Public Contract Code section 4106.

Bidder shall also list all SBE subcontractors and suppliers, including the respective subcontract dollar amounts for each, on the Bidders/Proposers Information Form in order to receive participation credit toward the SBE participation goal. Failure to include this information with the Bid may result in a determination that the Bidder has not met the SBE participation goal and its bid is therefore nonresponsive.

Subcontractor Name:

Address:

Portion of Work:

Amount of Subcontract:

Contractor's License No.:

San Francisco Business Tax Registration No.:



TG08.7 W-12 & W-13 Glass Floors

Bidder/Proposer Information Request From 00 08 21/AT3-B

**TRANSBAY JOINT POWERS AUTHORITY
BIDDERS/PROPOSERS INFORMATION REQUEST FORM
SECTION 00 08 21/AT3-B**

To be completed by Prime Contractor and submitted as part of bid/proposal.

[illegible]



Transbay Transit Center

Transbay Transit Center

TG08.7 W-12 & W-13 Glass Floors

Remember to sign all forms!!

Questions?

Thank You!